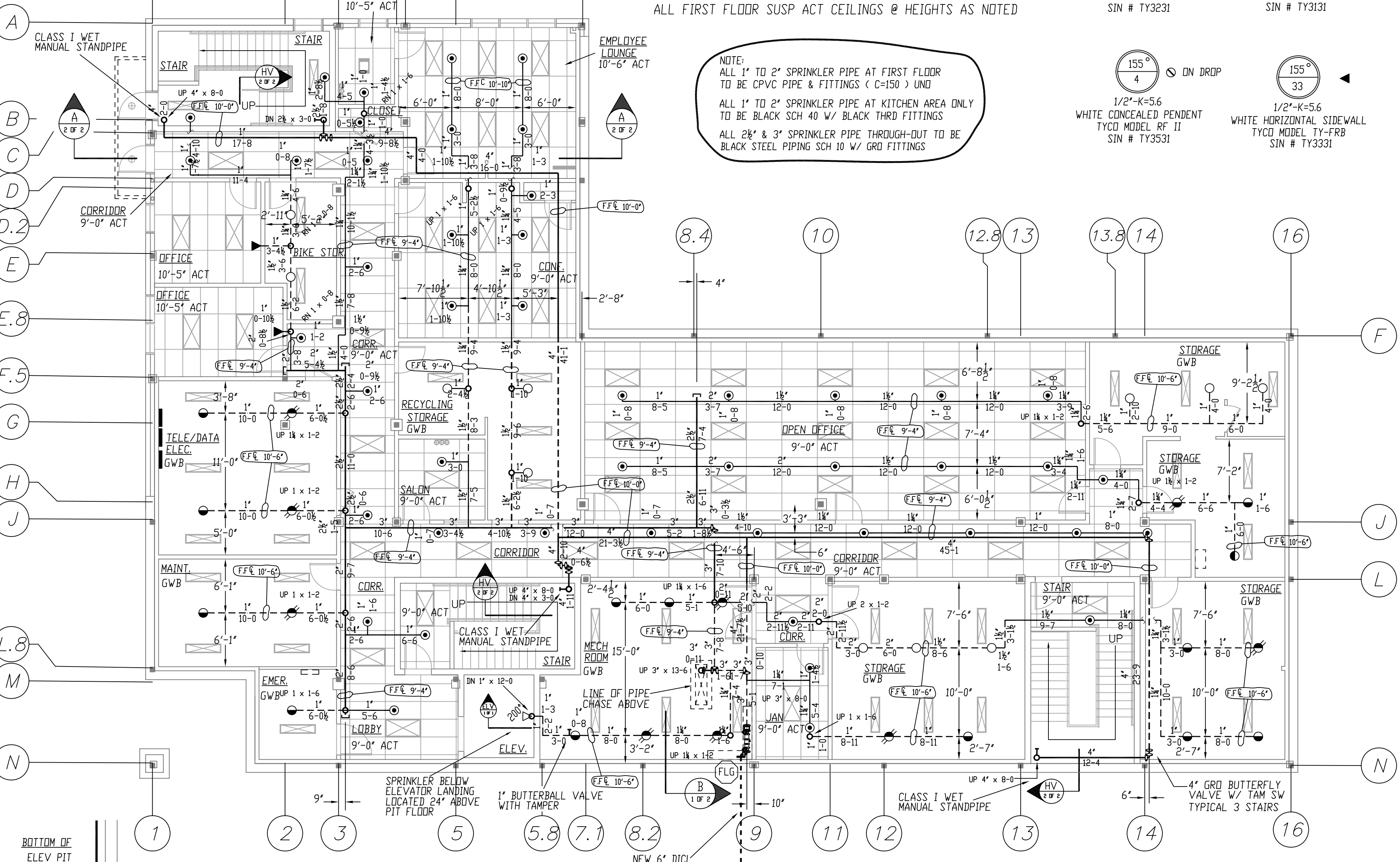


FIRE SPRINKLER PLAN - FIRST FLOOR PIPING

SCALE: 1/8"=1'-0"
 AREA PROTECTED: 8,200 SQ.FT.
 FINISH FLOOR ELEVATION 52'-0"
 NOTE: ALL FIRST FLOOR GYPSUM CEILINGS @ 12'-3 1/2" +/- AFF. UND.
 ALL FIRST FLOOR SUSP ACT CEILINGS @ HEIGHTS AS NOTED



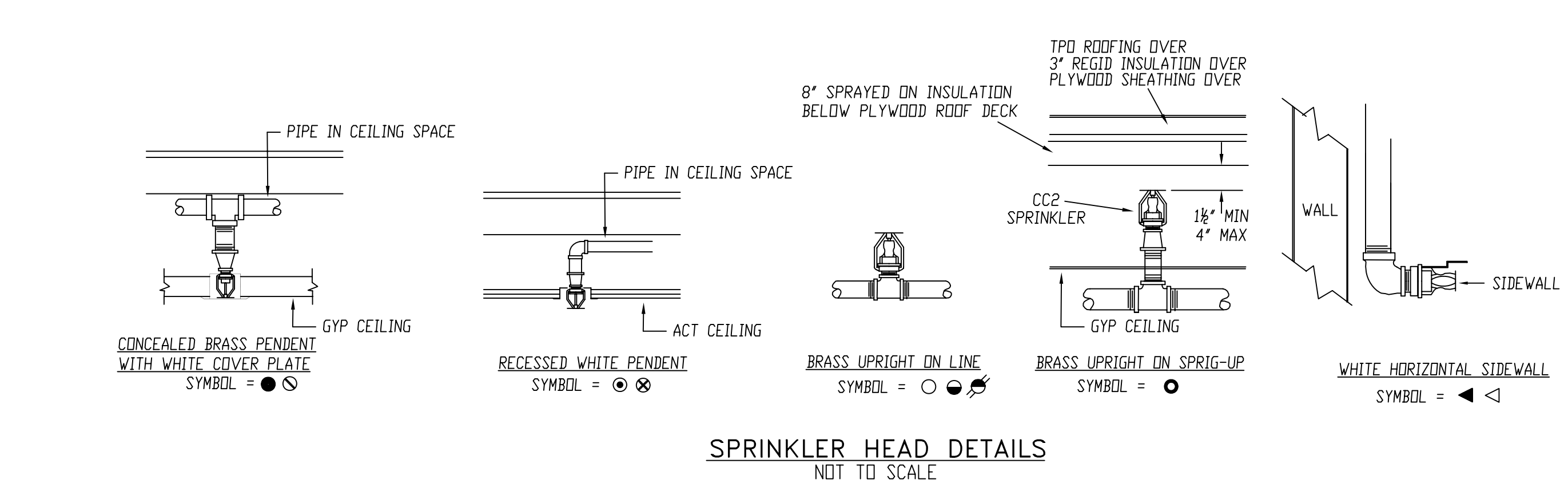
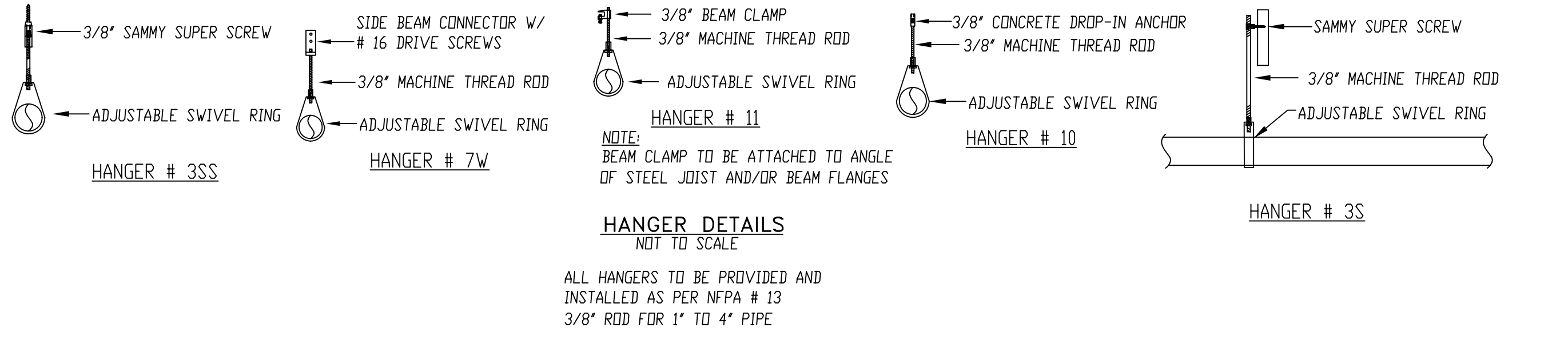
FIRE SPRINKLER PLAN - BASEMENT FLOOR PIPING

SCALE: 1/8"=1'-0"
 AREA PROTECTED: 8,200 SQ.FT.
 FINISH FLOOR ELEVATION 39'-0"
 NOTE: ALL BASEMENT FLOOR GYPSUM CEILINGS @ BOTTOM OF STRUCTURE
 ALL BASEMENT FLOOR SUSP ACT CEILINGS @ HEIGHTS AS NOTED

DETAIL "ELV"

NOT TO SCALE

GENERAL NOTES
 ALL PAINTING OF SPRINKLER PIPE AND ELECTRICAL WIRING TO BE DONE BY OTHERS
 SPRINKLER SYSTEM INSTALLATION TO COMPLY WITH NFPA PAMPHLET # 13, 2007
 ALTHOUGH NOT SPECIFIED, SOME SPRINKLER HEADS HAVE BEEN SHOWN @ CENTERLINE OF TILE. ACTUAL ORIENTATION OF HEADS WITH RESPECT TO CEILING COMPONENTS WILL VARY ACCORDING TO FIELD CONDITIONS.
 ALL DIMENSIONS ARE SHOWN FOR GENERAL LOCATION OF SPRINKLER HEADS; PIPING MAY VARY TO SUIT ACTUAL FIELD CONDITIONS.
 ACoustICAL CEILING TILE (ACT) TO BE LISTED NON-COMBUSTIBLE WITH UL FLAME SPREAD OF LESS
 OCCUPANCY DESCRIPTION AND CLASSIFICATION: APARTMENT DWELLING UNITS, UNUSED ATTIC, CORRIDORS, BATH, SHELTER AND OFFICE AREAS LIGHT HAZARD, KITCHEN, ELEC. RMS, MECH AND STORAGE AREAS ORDINARY I. MAXIMUM HEIGHT OF STORAGE NOT TO EXCEED 8'-0"
 ○ = INDICATES HYDRAULIC REFERENCE POINTS.
 F.F. ⊕ INDICATES FINISH FLOOR UP TO CENTERLINE OF PIPE.
 --- INDICATES EXPOSED SPRINKLER PIPE
 - - - - - INDICATES CONCEALED SPRINKLER PIPE



FIRST FLOOR KITCHEN AREA
 HYDRAULICALLY MOST REMOTE AREA
 (.15 GPM OVER 936 SQ FT)
 ELEVATION HIGHEST SPRINKLER = 63'-0"
 REMOTE AREA MODIFIED AS PER NFPA # 13 FIG. 11.2.3.2.1

NOTE:
 ALL 1" TO 2" SPRINKLER PIPE AT KITCHEN AREAS TO BE BLACK SCH 40 PIPE & BLK THREADED FITTINGS
 PIPE EXPOSED IN KITCHEN AREA DUE TO ELEVATION OF STEEL I-BEAM IN CONFLICT WITH PROPOSED GWB CEILING HEIGHT

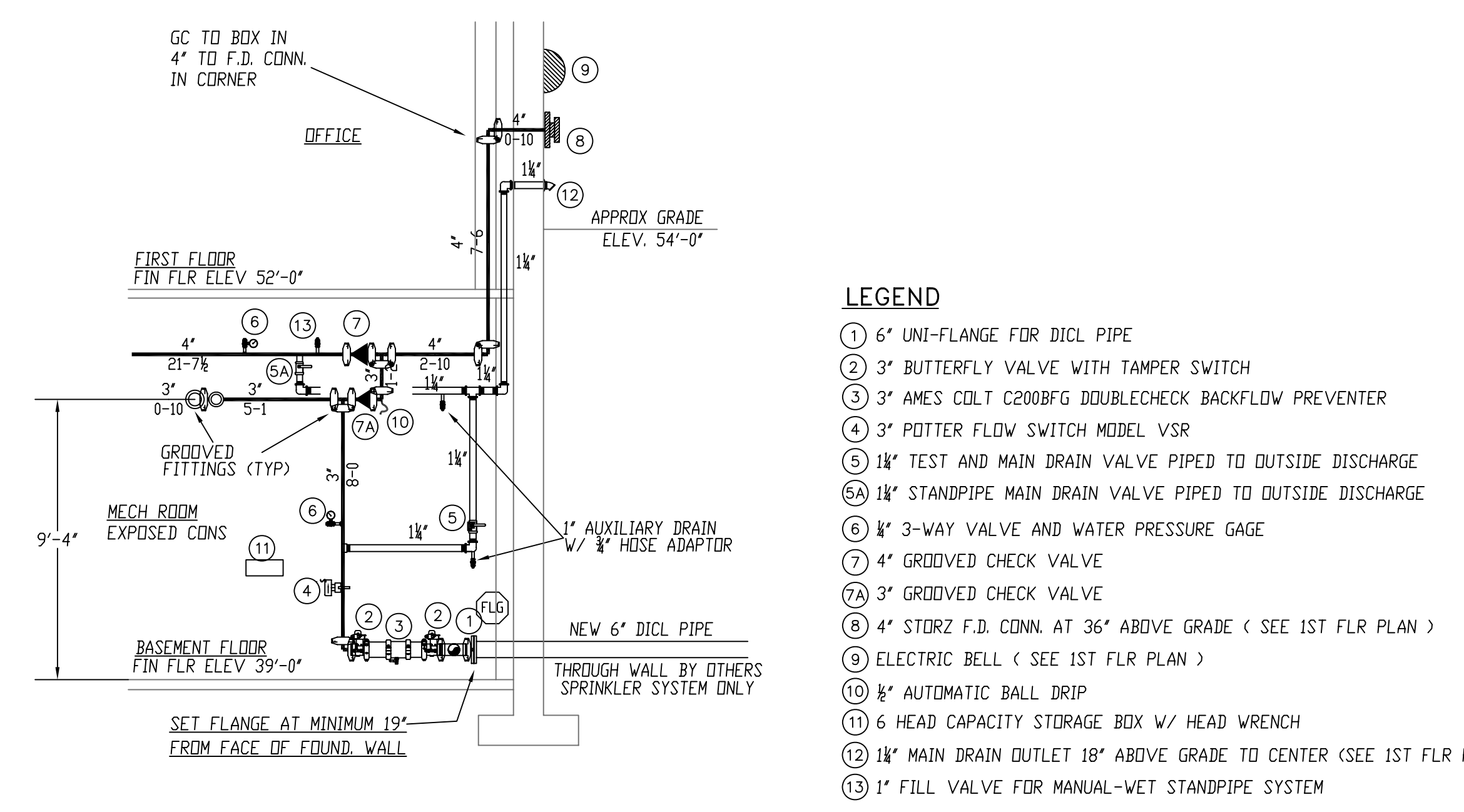
HYDRAULIC-SYSTEM
 THIS BUILDING IS PROTECTED BY A HYDRAULICALLY DESIGNED AUTOMATIC SPRINKLER SYSTEM.

LOCATION: 1ST FLR KITCHEN

No. OF SPRINKLERS: (CALCULATED)	14
BASIS OF DESIGN:	
1. DENSITY (GPM/SQ.FT.)	.15
2. DESIGNATED AREA OF DISCHARGE (SQ.FT.)	936
SYSTEM DEMAND:	
1. WATER FLOW RATE (GPM)	280
2. RESIDUAL PRESSURE AT THE BASE OF THE RISER	73 (PSI)

HYDRAULIC DATA NAMEPLATE

TO BE MOUNTED AT SYSTEM RISER
 ○ = INDICATES HYDRAULIC REFERENCE POINTS.



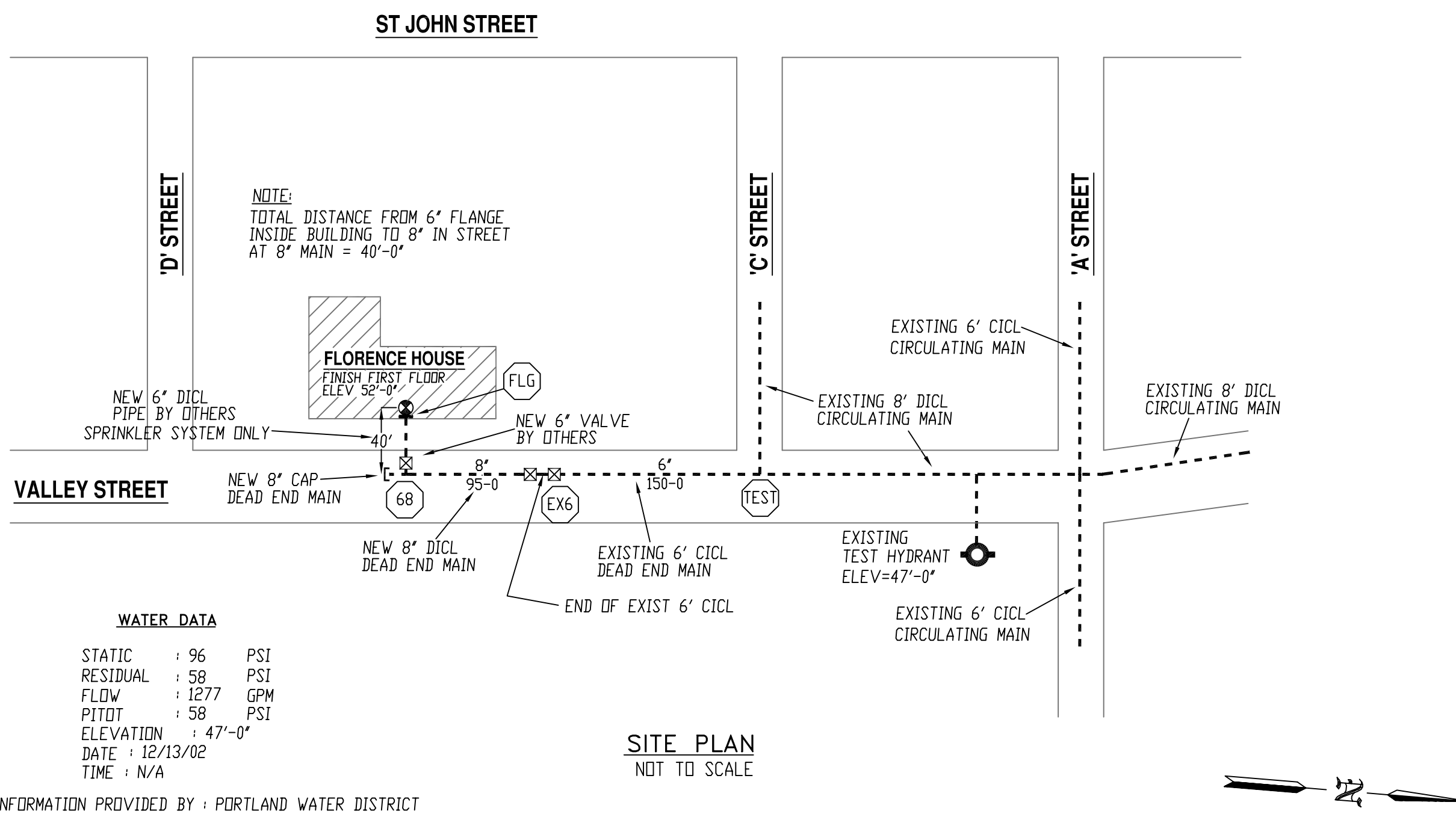
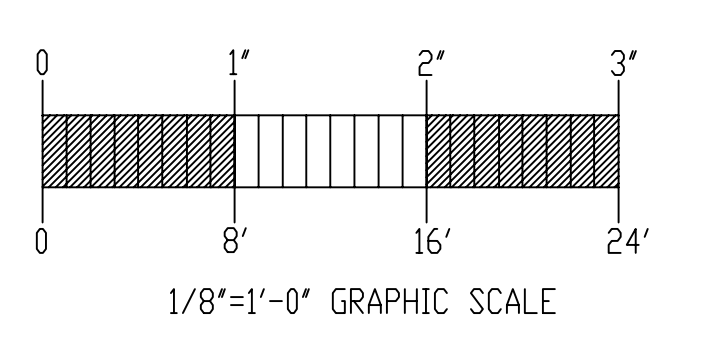
RISER DETAIL "B"

NOT TO SCALE

- LEGEND**
- ① 6" UNI-FLANGE FOR DIOL PIPE
 - ② 3" BUTTERFLY VALVE WITH TAMPER SWITCH
 - ③ AMES COLT C200BFG DOUBLECHECK BACKFLOW PREVENTER
 - ④ 3" POTTER FLOW SWITCH MODEL VSR
 - ⑤ 1 1/2" TEST AND MAIN DRAIN VALVE PIPED TO OUTSIDE DISCHARGE
 - ⑥ 1 1/2" STANDPIPE MAIN DRAIN VALVE PIPED TO OUTSIDE DISCHARGE
 - ⑦ 3" 3-WAY VALVE AND WATER PRESSURE GAGE
 - ⑧ 4" GROVDED CHECK VALVE
 - ⑨ 4" GROVDED CHECK VALVE
 - ⑩ 8" STORZ F.D. CONN. AT 36" ABOVE GRADE (SEE 1ST FLR PLAN)
 - ⑪ ELECTRIC BELL (SEE 1ST FLR PLAN)
 - ⑫ 8" AUTOMATIC BALL DRIP
 - ⑬ 6" HEAD CAPACITY STORAGE BOX W/ HEAD WRENCH
 - ⑭ 1 1/2" MAIN DRAIN OUTLET 18" ABOVE GRADE TO CENTER (SEE 1ST FLR PLAN)
 - ⑮ 1" FILL VALVE FOR MANUAL-WET STANDPIPE SYSTEM

NOTE:
 ALL 1" TO 2" SPRINKLER PIPE AT BASEMENT FLOOR TO BE BLACK SCH 40 W/ BLACK THRD FITTINGS
 ALL 2 1/2" & 3" SPRINKLER PIPE THROUGH-OUT TO BE BLACK STEEL PIPING SCH 10 W/ GROVDED FITTINGS

NOTE: ALL PIPE CUTS SHOWN ARE FROM CENTER TO CENTER OF FITTINGS



WATER DATA

STATIC	96	PSI
RESIDUAL	58	PSI
FLOW	1277	GPM
PITOT	58	PSI
ELEVATION	47'-0"	
DATE	12/13/02	
TIME	N/A	

INFORMATION PROVIDED BY: PORTLAND WATER DISTRICT
 NOTE: UNDERGROUND TO BE INSTALLED, TESTED AND FLUSHED BY OTHERS IN ACCORDANCE WITH NFPA # 24 (ALL UNDERGROUND PIPING TO BE DONE BY OTHERS). EASTERN FIRE PROTECTION CO. TO START @ FLANGE INSIDE BUILDING (INSTALLED BY OTHERS).

SITE PLAN

NOT TO SCALE

GENERAL NOTES	DATE	REVISIONS	REQUIRED APPROVALS	FLORENCE HOUSE APARTMENTS 190 VALLEY ST., PORTLAND, MAINE	FIRE SPRINKLER PLANS & DETAILS
SPRINKLER SYSTEM INSTALLATION TO COMPLY WITH NFPA PAMPHLET # 13, 2007, SPECIFICATION SECTION 15.500 BASEMENT BRANCH LINE PIPING TO BE BLACK SCHEDULE 40 JOINED BY THREADED DUCTILE IRON FITTINGS (C-120) ALL 2 1/2" & 4" MAIN PIPING TO BE SCHEDULE # 10 BLACK WITH GROVDED ENDS & WELDED OUTLETS JOINED BY MECHANICAL COUPLINGS (C-120) ALL OTHER SPRINKLER PIPE AT FIRST, SECOND AND THIRD FLOORS TO BE CONCEALED CPVC PIPE JOINED WITH GROVDED ENDS & WELDED OUTLETS JOINED BY BLAZEMASTER OWNER TO PROVIDE SUFFICIENT HEAT THROUGHOUT BUILDING TO PREVENT FREEZING OF WATER FILLED SPRINKLER PIPING AND EQUIPMENT. (< 40° F)			OWNER / ARCHITECT STATE FIRE MARSHAL PORTLAND FIRE DEPARTMENT		
			DRAWN BY: WAF CHECKED BY: RCB NICET LEVEL III CERT # 095574 NICET LEVEL III CERT # 069681 CONTRACTOR LICENSE # 101 CONTRACTOR RMS # 368	CONTRACTOR LICENSE # 101 CONTRACTOR RMS # 368	JOB NUMBER AU-4336-08 SCALE AS NOTED DATE 03/30/09

