

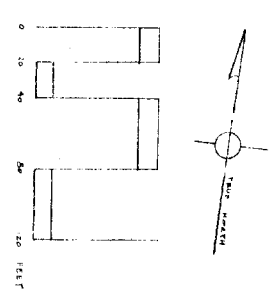
**Plantlist:**

**Trees**

- 1 AC Red Oak
- 2 BF Yellow Birch
- 3 CR White Birch
- 4 FR Red Spruce
- 5 GR Green Spruce
- 6 LR Larch
- 7 MR Maple
- 8 PR Pine
- 9 SR Spruce
- 10 TR Fir
- 11 YR Yellow Pine
- 12 BR Black Birch
- 13 GR Green Spruce
- 14 LR Larch
- 15 MR Maple
- 16 PR Pine
- 17 SR Spruce
- 18 TR Fir
- 19 YR Yellow Pine
- 20 BR Black Birch
- 21 GR Green Spruce
- 22 LR Larch
- 23 MR Maple
- 24 PR Pine
- 25 SR Spruce
- 26 TR Fir
- 27 YR Yellow Pine
- 28 BR Black Birch
- 29 GR Green Spruce
- 30 LR Larch
- 31 MR Maple
- 32 PR Pine
- 33 SR Spruce
- 34 TR Fir
- 35 YR Yellow Pine
- 36 BR Black Birch
- 37 GR Green Spruce
- 38 LR Larch
- 39 MR Maple
- 40 PR Pine
- 41 SR Spruce
- 42 TR Fir
- 43 YR Yellow Pine
- 44 BR Black Birch
- 45 GR Green Spruce
- 46 LR Larch
- 47 MR Maple
- 48 PR Pine
- 49 SR Spruce
- 50 TR Fir
- 51 YR Yellow Pine
- 52 BR Black Birch
- 53 GR Green Spruce
- 54 LR Larch
- 55 MR Maple
- 56 PR Pine
- 57 SR Spruce
- 58 TR Fir
- 59 YR Yellow Pine
- 60 BR Black Birch
- 61 GR Green Spruce
- 62 LR Larch
- 63 MR Maple
- 64 PR Pine
- 65 SR Spruce
- 66 TR Fir
- 67 YR Yellow Pine
- 68 BR Black Birch
- 69 GR Green Spruce
- 70 LR Larch
- 71 MR Maple
- 72 PR Pine
- 73 SR Spruce
- 74 TR Fir
- 75 YR Yellow Pine
- 76 BR Black Birch
- 77 GR Green Spruce
- 78 LR Larch
- 79 MR Maple
- 80 PR Pine
- 81 SR Spruce
- 82 TR Fir
- 83 YR Yellow Pine
- 84 BR Black Birch
- 85 GR Green Spruce
- 86 LR Larch
- 87 MR Maple
- 88 PR Pine
- 89 SR Spruce
- 90 TR Fir
- 91 YR Yellow Pine
- 92 BR Black Birch
- 93 GR Green Spruce
- 94 LR Larch
- 95 MR Maple
- 96 PR Pine
- 97 SR Spruce
- 98 TR Fir
- 99 YR Yellow Pine
- 100 BR Black Birch

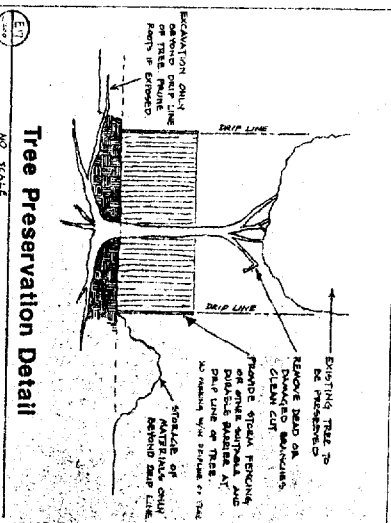
**Shrubs:**

- 1 BR Blackberry
- 2 CR Currant
- 3 FR Rubus
- 4 GR Greenberry
- 5 LR Lonicera
- 6 MR Malva
- 7 PR Prunella
- 8 SR Spiraea
- 9 TR Trollius
- 10 YR Yucca
- 11 BR Blackberry
- 12 CR Currant
- 13 FR Rubus
- 14 GR Greenberry
- 15 LR Lonicera
- 16 MR Malva
- 17 PR Prunella
- 18 SR Spiraea
- 19 TR Trollius
- 20 YR Yucca



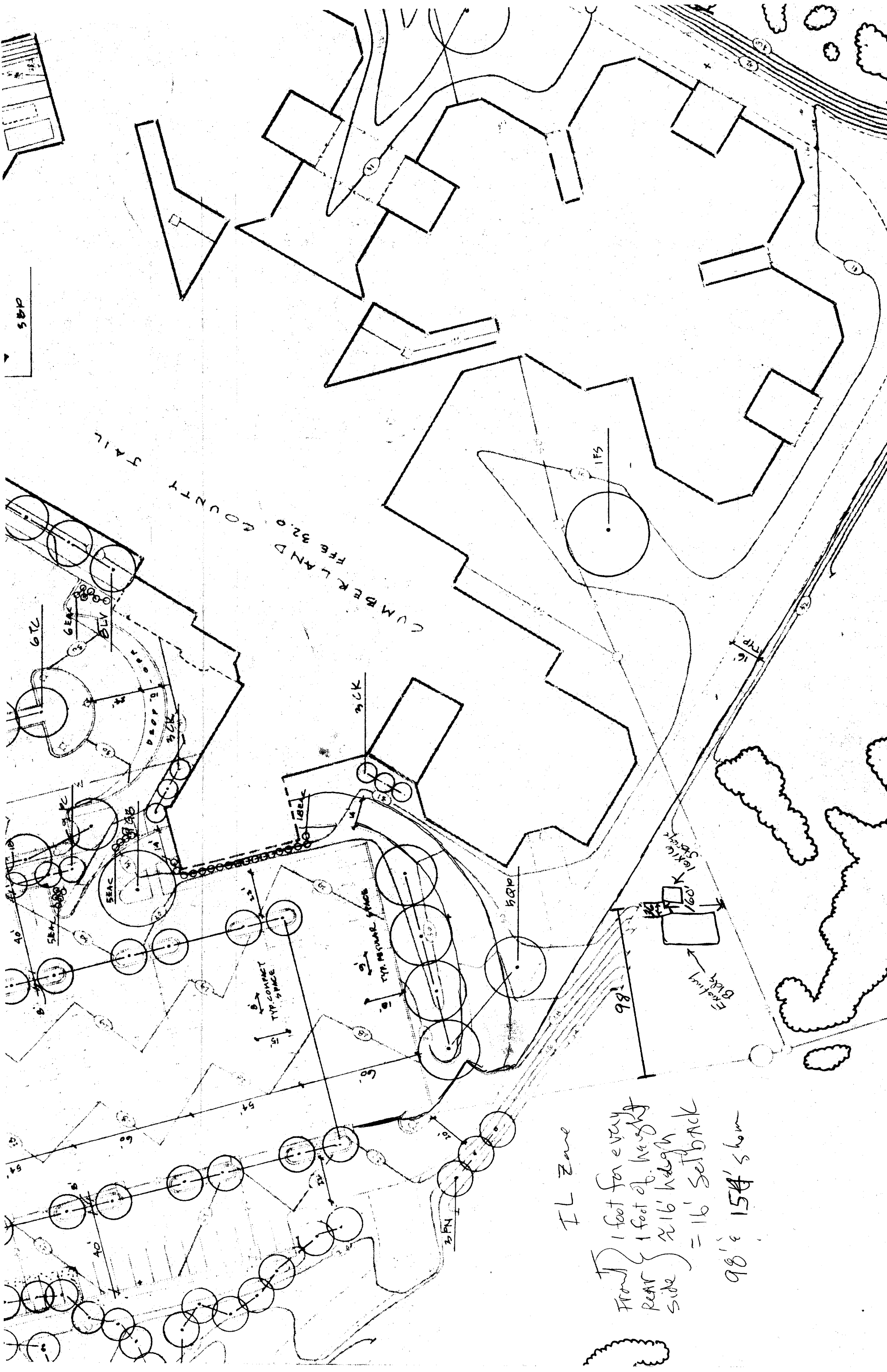
**NOTES:**

- 1. All trees to be preserved are shown on this plan.
- 2. All trees to be removed are shown on this plan.
- 3. All trees to be preserved are shown on this plan.
- 4. All trees to be removed are shown on this plan.
- 5. All trees to be preserved are shown on this plan.
- 6. All trees to be removed are shown on this plan.
- 7. All trees to be preserved are shown on this plan.
- 8. All trees to be removed are shown on this plan.
- 9. All trees to be preserved are shown on this plan.
- 10. All trees to be removed are shown on this plan.



**STEVEN MORTON ROSE & THOMPSON**  
 Architects  
 21 Front Street, Suite 110  
 Raleigh, North Carolina 27601  
 Tel: (919) 772-1000  
 Fax: (919) 772-1000

**Cumberland County Jail**  
 Layout and Landscape Plan  
 SHEET NO. 1-100



TAIL  
 CUMBERLAND COUNTY  
 FEB 32.0

TRUCK

SEAC

PROP

TYP. COMPACT SPACE

TYP. NORMAL SPACE

98'

Existing Block  
 Lev. Struck

IL Zone

Front } 1 foot for every  
 Rear } 1 foot of height  
 Side } ~16' height  
 = 16' setback  
 98' ± 154' ± low