

.040" THICK YELLOW ALUMINUM PANELS

SINGLE-FACED NON-LIT WALL SIGN

(60 SQ. FT.)

SCALE: 3/8" = 1'-0"

(1) REQUIRED

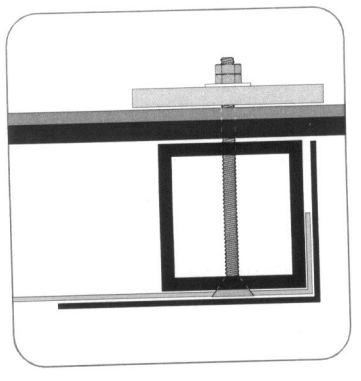
NON-LIT .040" YELLOW ALUMINUM PANELS;

BLACK VINYL GRAPHICS AND COPY WITH WHITE VINYL BORDERS;

WHITE VINYL .8" WITH BLACK VINYL BORDER;

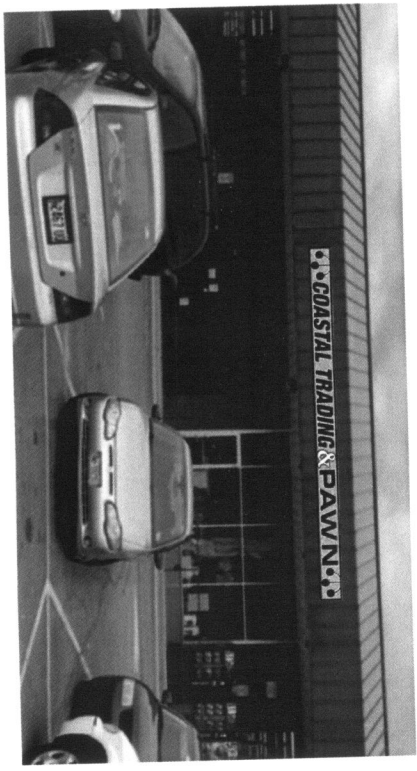
1x1" ALUMINUM TUBE FRAMES;

MOUNT TO EXISTING BUILDING FASCIA CENTERED WITHIN 39'-6" V.O.



THROUGH-BOLT MOUNTING
NOT TO SCALE

3/8" STAINLESS STEEL THREADED ROD FASTENERS,
DOUBLE NUTTED, WITH 1/2" THICK PLYWOOD SPACERS



INSTALLED DEPICTION
NO SCALE



Neokraft
SIGN S

Neokraft Signs Inc.
686 Main Street
Lewiston, Maine 04240
Telephone: 207.782.9454
Fax: 207.782.0009
Toll Free: 1.800.359.2258
http://www.neokraft.com

Custom Sign Fabrication

These plans are the exclusive property of Neokraft Signs Inc. and are to be used only for the original work of the client for the purposes of construction. Any reproduction or use for any other purpose without the express written consent of Neokraft Signs Inc. is strictly prohibited. In the event that such reproduction or use occurs, Neokraft Signs Inc. shall not be held responsible for any damages or losses incurred by the client. Neokraft Signs Inc. shall not be held responsible for any damages or losses incurred by the client. Neokraft Signs Inc. shall not be held responsible for any damages or losses incurred by the client.

Coastal Trading & Pawn

19729
SCHEMB

Location: 264 St. John St.
Portland, ME
Drawing No.: 1 of 1
Drawn by: ML Rep.: RM
Date: 06.02.2015
Rev.: 09.22.2015 ML
Lead No.: ML022922
Gen Ref.: 16895 (2013)