



# AT&T

PROJECT TITLE:

## TELECOMMUNICATIONS HUT

UNION STATION PLAZA  
240-280 SAINT JOHN ST  
PORTLAND

### 08/30/2017

A&W JOB NUMBER:  
2015.01.083

ENGAGEMENT NUMBER:  
E15823

ARCHITECT:

## AMES & WHITAKER Architects

MEMBERS OF THE AMERICAN INSTITUTE OF ARCHITECTS

31 Liberty Street, Suite 208 Southington, Connecticut 06702 (860) 621-8944 Fax (860) 621-0957

ENGINEER:

GENERAL CONTRACTOR:

### CPS ENGINEERING, INC.

MECHANICAL AND ELECTRICAL ENGINEERS  
90 NATIONAL DRIVE, GLASTONBURY, CT 06033  
Tel. 860-657-8118 Fax 860-657-8999



### Spiegel Zamecnik & Shah Inc.

Structural Engineers

54 Wall Street New Haven Connecticut 06511 203-624-9831 FAX 203-777-4227  
2450 Virginia Ave NW Suite E312 Washington DC 20037 202-223-9500 FAX 202-223-9793

### CONSTRUCTION DOCUMENT SUBMISSION (BID SET)

### AT&T MASTER REAL ESTATE SPECIFICATION INFORMATION THE CURRENT AT&T MASTER PROJECT MANUAL RELATED TO THESE DOCUMENTS : VERSION 7.0 DECEMBER 2014

#### VOLUME 1 - SPECIFICATION DIVISIONS REQUIRED

##### TABLE OF CONTENTS

##### STANDARD ARCHITECTURAL AND STRUCTURAL ABBREVIATIONS

##### STANDARD DRAWING SYMBOLS AND MOUNTING LEGEND

##### SUBMITTAL REQUIREMENTS

##### LIST OF NATIONAL PRICING/PURCHASING AGREEMENTS

##### TELEPHONE SPACE METHOD OF PROCEDURE

##### SPECIAL REQUIREMENTS FOR ROOFING PROJECTS

##### LIMITED ASBESTOS SURVEY ROOFING MATERIALS -

(UNDER SEPARATE COVER)

##### SPECIFICATIONS

##### DIVISION 1

##### SECTION 01 00 00 GENERAL CONDITIONS

##### SECTION 01 01 00 GENERAL REQUIREMENTS

##### SECTION 01 14 00 OCCUPANCY

##### SECTION 01 21 00 ALLOWANCES

##### SECTION 01 22 00 UNIT PRICES

##### SECTION 01 25 00 SUBSTITUTIONS AND PRODUCT

##### SECTION 01 31 00 COORDINATION

##### SECTION 01 32 00 CONSTRUCTION SCHEDULES

##### SECTION 01 35 00 SAFETY

##### SECTION 01 50 00 TEMPORARY FACILITIES CONTROL

##### SECTION 01 78 39 PROJECT RECORD DOCUMENTS

##### SECTION 01 79 20 CUTTING AND PATCHING

##### SECTION 01 79 40 CORING, CUTTING AND WELDING

##### DIVISION 2

##### SECTION 02 41 19 DEMOLITION

##### SECTION 02015 EXCAVATION

##### SECTION 02301 STRUCTURAL COMPACTED FILL

##### SECTION 02510 BITUMINOUS CONCRETE PAVING

##### SECTION 02821 CHAIN LINK FENCES AND GATES

##### SECTION 02825 ORNAMENTAL METAL FENCE

##### SECTION 02828 EXTRUDED POLYVINYLCHLORIDE FENCE

##### SECTION 02900 LANDSCAPING

##### DIVISION 3

##### SECTION 03 30 00 CAST-IN-PLACE CONCRETE

##### DIVISION 4

##### SECTION 04 01 20 CLAY MASONRY RESTORATION

##### SECTION 04 20 00 UNIT MASONRY

##### DIVISION 5

##### SECTION 05 12 00 STRUCTURAL STEEL

##### SECTION 05 21 00 STEEL JOIST

##### SECTION 05 31 00 STEEL DECK

##### SECTION 05 40 00 COLD FORMED METAL FRAMING

##### SECTION 05 50 00 METAL FABRICATIONS

##### SECTION 05 51 00 STAINLESS STEEL ISLAND CURB

##### SECTION 05 52 00 PORTABLE RAILING SYSTEM

##### SECTION 05 53 00 HANDRAILS

##### DIVISION 6

##### SECTION 06 10 00 ROUGH CARPENTRY

##### SECTION 06 20 00 FINISH CARPENTRY

##### SECTION 06 40 23 ARCHITECTURAL WOODWORK

##### SECTION 06 51 00 FIBERGLASS SHUTTERS

##### DIVISION 7

##### SECTION 07 21 00 BUILDING INSULATION

##### SECTION 07 31 26 REPAIR OF SLATE SHINGLE ROOFS

##### SECTION 07 31 13 ASPHALT SHINGLES

- SECTION 07 46 33 SIDING (VINYL)
- SECTION 07 46 23 SIDING (WOOD)
- SECTION 07 52 16 SBS MODIFIED BITUMEN ROOFING
- SECTION 07 59 10 PREPARATION FOR RE-ROOFING
- SECTION 07 61 00 STANDING SEAM METAL ROOF SYSTEM
- SECTION 07 62 00 SHEET METAL FLASHING & TRIM
- SECTION 07 71 00 ROOF SPECIALTIES
- SECTION 07 72 10 ROOF ACCESSORIES
- SECTION 07 82 00 APPLIED FIREPROOFING
- SECTION 07 84 00 FIRE STOPPING
- SECTION 07 92 00 JOINT SEALANTS
- SECTION 07 92 10 JOINT SEALANTS BETWEEN PRECAST CONCRETE PANELS

##### DIVISION 8

##### SECTION 08 11 00 STEEL DOORS AND FRAMES

##### SECTION 08 14 00 WOOD DOORS

##### SECTION 08 33 23 OVERHEAD COILING DOORS

##### SECTION 08 51 00 ALUMINUM WINDOWS

##### SECTION 08 60 00 PLASTIC SKYLIGHTS

##### SECTION 08 71 00 FINISH HARDWARE

##### SECTION 08 91 19 METAL LOUVERS

##### DIVISION 9

##### SECTION 09 21 16 GYPSUM WALLBOARD SYSTEMS

##### SECTION 09 30 13 CERAMIC TILE

##### SECTION 09 51 13 ACOUSTICAL TILE CEILINGS

##### SECTION 09 65 00 RESILIENT FLOORING

##### SECTION 09 65 13 RUBBER WALL BASE

##### SECTION 09 68 00 CARPETING

##### SECTION 09 91 00 PAINTING

##### SECTION 09 96 00 HIGH PERFORMANCE COATINGS

##### DIVISION 10

##### SECTION 10 14 00 SIGNAGE

##### SECTION 10 22 13 WIRE MESH PARTITIONS

##### SECTION 10 28 00 TOILET ACCESSORIES

##### DIVISION 11

##### SECTION 11 12 00 PARKING CONTROL EQUIPMENT

##### DIVISION 12

##### SECTION 12 21 16 VERTICAL LOUVER BLINDS

##### DIVISIONS 13 & 14 NOT USED

THE VOLUME 2 MASTER SPECIFICATIONS FOR MECHANICAL AND ELECTRICAL TRADES CAN BE FOUND UNDER SEPARATE COVER AND WILL BE DISTRIBUTED BY THE AHEARN PROJECT MANAGER UPON REQUEST.

##### DIVISION 31

##### SECTION 31 23 16 EXCAVATION

##### SECTION 31 23 23 STRUCTURAL COMPACTED FILL

##### DIVISION 32

##### SECTION 32 12 16 BITUMINOUS CONCRETE PAVING

##### SECTION 32 31 13 CHAIN LINK FENCES AND GATES

##### SECTION 32 31 19 ORNAMENTAL METAL FENCE

##### SECTION 32 31 23 EXTRUDED POLYVINYL CHLORIDE

##### (PVC) FENCING

##### SECTION 32 90 00 LANDSCAPING

PROJECT SPECIFIC SPECIFICATIONS ARE BOUND INTO THIS SET OF DOCUMENTS.

GENERAL CONTRACTOR SHALL COMPLY WITH THE REQUIREMENTS SET FORTH IN AT&T'S APPENDIX BA, REMOVAL AND MANAGEMENT OF USED BATTERIES ("RMUB") AVAILABLE AT:

<http://www.ottsuppliers.com/misc/Appendix-BA-Removal-and-Management-of-Used-Batteries.pdf> AND INCORPORATED HEREIN BY REFERENCE. GENERAL CONTRACTOR FURTHER AGREES TO COMPLY WITH THE TERMS AND CONDITIONS OF THE RMUB, AS MAY BE CHANGED FROM TIME-TO-TIME BY AT&T. GENERAL CONTRACTOR AGREES TO COOPERATE FULLY WITH AT&T, INCLUDING COMPLETING CHECKLISTS, SURVEYS, OR SIMILAR DOCUMENTATION, TO ENSURE THAT ANY MANAGEMENT, SHIPMENT, SMELTING, RECYCLING, AND/OR DISPOSAL OF USED BATTERIES BY GENERAL CONTRACTOR AND ITS SUBCONTRACTORS ON BEHALF OF AT&T COMPLY WITH THE STANDARDS AND REQUIREMENTS SET FORTH IN THE RMUB. NOTE THAT THE RMUB INCLUDES AT&T'S REQUIREMENT THAT ALL LEAD ACID BATTERIES IN THE UNITED STATES, MAY NOT BE EXPORTED OUTSIDE OF THE UNITED STATES FOR RECYCLING, SMELTING, OR OTHER DISPOSITION.

#### DRAWING INDEX

##### GENERAL

----- COVER SHEET

##### ARCHITECTURAL

A101 FLOOR PLAN & ELEVATIONS

##### STRUCTURAL

S101 NEW FOUNDATION FOR PRECAST MECHANICAL VAULT

##### MECHANICAL

M301 1ST FLOOR HVAC PLAN

##### ELECTRICAL

- SE1 ELECTRICAL POWER PLAN
- E301 ELECTRICAL POWER PLAN
- E302 ELECTRICAL LIGHTING PLAN
- E303 ELECTRICAL GROUNDING PLAN
- E701 ELECTRICAL ONE-LINE RISER
- E801 ELECTRICAL LEGENDS, SCHEDULES & DETAILS
- E802 ELECTRICAL GROUNDING DETAILS
- E803 ELECTRICAL ALARMS DETAILS
- E804 ELECTRICAL DETAILS
- E805 ELECTRICAL GENERATOR MONITORING
- E806 AUTOMATIC TANK MONITORING DETAILS

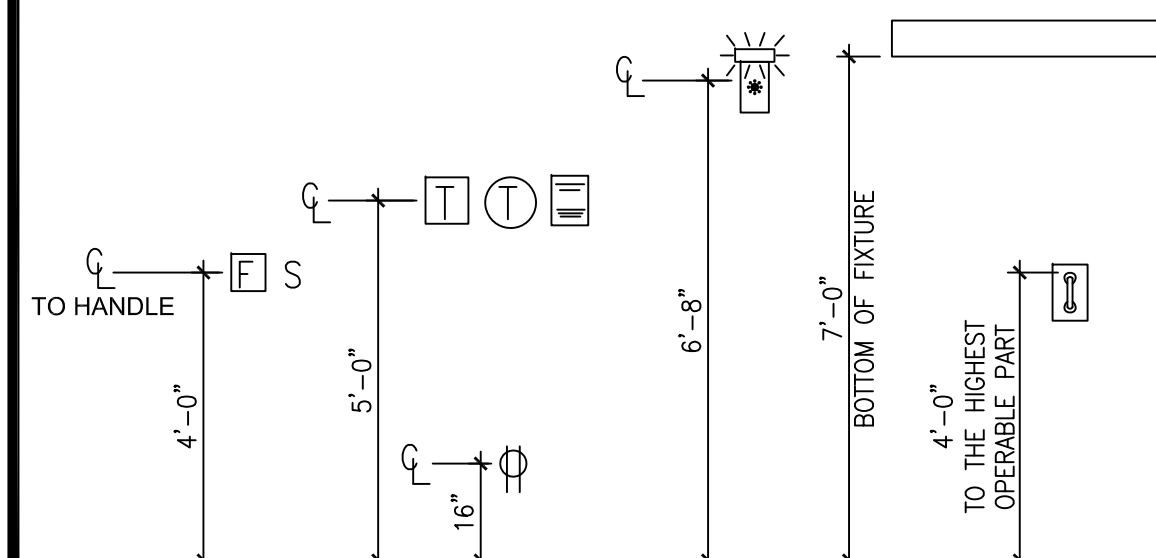
#### SYMBOLS

	EXISTING TO REMAIN
	CENTER LINE
	DEMOLITION LINE
	HIDDEN LINE
	PROPERTY LINE
	CONTRACT LIMIT LINE
	1 HOUR FIRE RATED LINE
	2 HOUR FIRE RATED LINE
	3 & 4 HOUR FIRE RATED LINE
	MATCH LINE INDICATOR
	FENCE
	STRAIGHT BREAK MARK
	CURVED BREAK MARK
	PLYWOOD
	PARTICLE BOARD
	ORIENTED STRAND BOARD
	WOOD FINISH
	STEEL
	ALUMINUM
	CONCRETE
	CONCRETE MASONRY UNIT
	BRICK
	CRUSHED ROCK GRAVEL
	UNDISTURBED EARTH
	COMPACTED FILL

	INTERIOR ELEVATION
	INTERIOR ELEVATION MULTIPLE VIEWS

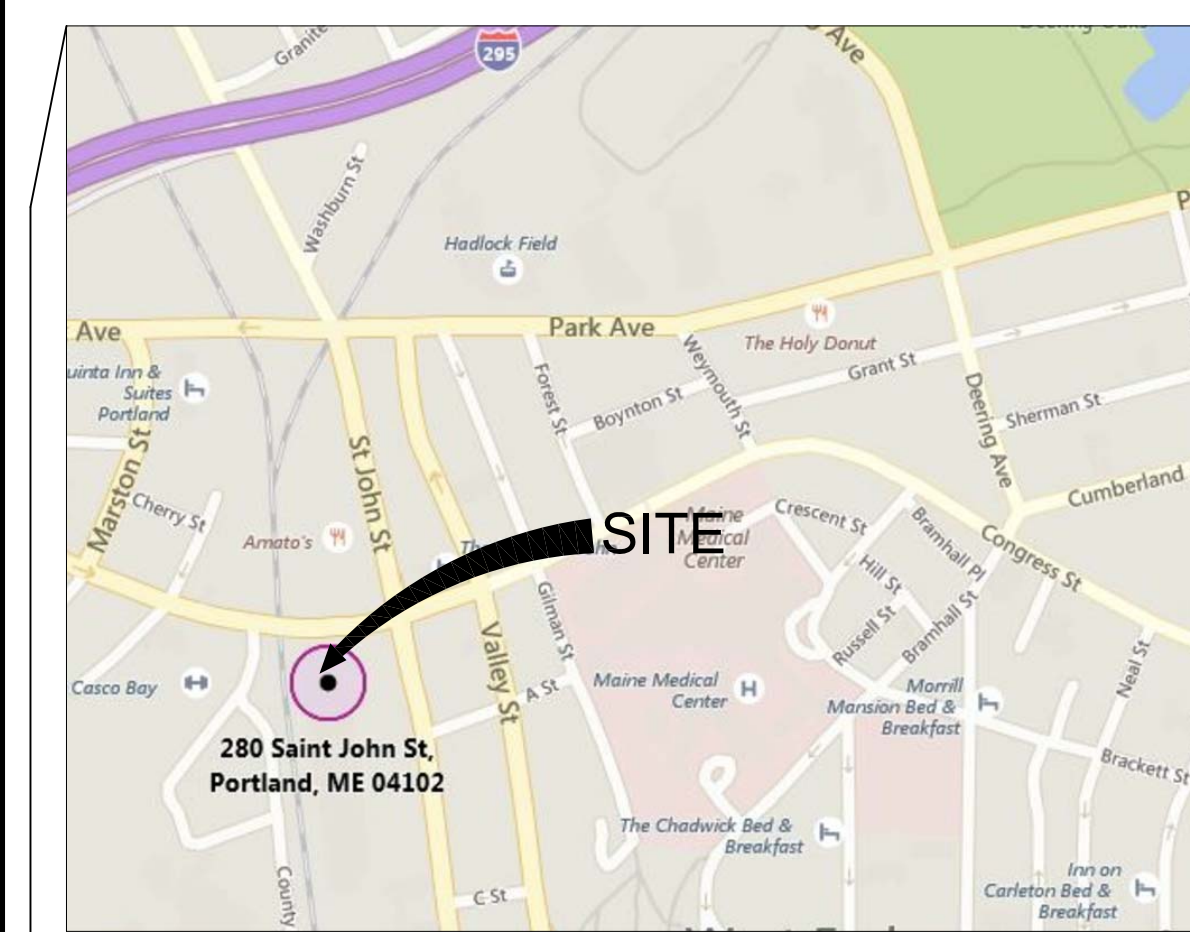
	ROOM IDENTIFIER
	DOOR IDENTIFIER
	KEYNOTE INDICATOR
	WALL TYPE INDICATOR
	WINDOW TYPE
	SMALL CONDITIONS DETAIL MARK
	EXTERIOR ELEVATION
	DETAIL MARK

#### MOUNTING LEGEND



#### LEGEND

	BUILDING SPACE TEMPERATURE		WALL MOUNTED LIGHT FIXTURE		FIRE ALARM STROBE OR AUDIOVISUAL
	THERMOSTAT		WALL RECEPTACLE		MANUAL PULL STATION
	TELEPHONE		SWITCH		GENERAL SIGNAGE



LOCATION PLAN --NO SCALE

#### PROJECT INFORMATION: ATT MOBILITY SWITCH

PROJECT: TELECOMMUNICATIONS HUT  
ADDRESS: 240-280 SAINT JOHN ST  
PORTLAND, ME  
OWNER: AT&T  
2 SCIENCE PARK  
NEW HAVEN, CT 06511

AT&T CONTACT: PROJECT MANAGER: GREGG MIRANDO  
(203) 909-3512  
PROPERTY MANAGER: DOUG GORHAM  
(508) 804-1870

PROJECT ARCHITECT: ALAN LAGOCKI, A.I.A.  
(860) 621-8944

#### APPLICABLE CODES

##### MAINE STATE BUILDING CODE

2009 IBC, AMENDED 1/2015

2009 IECC, AMENDED 1/2015

#### BUILDING INFORMATION

YEAR BUILT:

SQ-FT:

FLOORS:

#### CLASSIFICATIONS:

OCCUPANCY CLASSIFICATION (BUILDING CODE):  
CLASS B-BUSINESS (TELECOMMUNICATIONS)

USE GROUP (FIRE SAFETY CODE):  
BUSINESS (TELEPHONE EXCHANGE)

#### PROJECT SUMMARY:

1. PROVIDE NEW PRE-CAST TELCO EQUIPMENT HUT.
2. PROVIDE STANDBY GENERATOR.