

ALPHAarchitects  
17 CHESTNUT STREET  
PORTLAND, ME 04101  
PHONE: 207.761.9500  
FAX: 207.761.9595  
design@alphaarchitects.com

COPYRIGHT

Reuse or reproduction of the contents of this document is not permitted without written permission of ALPHA ARCHITECTS

FOR CONSTRUCTION

**Restaurant fka JAN MEE**  
280 St. John Street - Union Square Plaza  
Portland, ME 04101

JOB: 14132

ISSUE DATE	
P BOARD	NR
SFMO	NR
CD's	
REV. 2	
REV. 3	
PRINT	09/15/2014

LIFE SAFETY PLAN  
**LS1.1**

- NOTES:**
- ALL EMERGENCY LIGHTS MUST BE POWERED BY BATTERY BACK-UP OR GENERATOR PER NFPA 101.
  - HVAC PER NFPA 90A
  - EMERGENCY LIGHTS TO AVERAGE 1 FOOTCANDLE AND .1 FOOTCANDLE MINIMUM.

- ABBREVIATIONS:**
- C.O = CASER OPENING
  - CL = DOOR CLOSER
  - WS = WEATHER STRIPPING SYSTEM
  - DB = DEAD BOLT
  - L = ADA LEVER

- FIRE PROTECTION LEGEND**
- FE FIRE EXTINGUISHER 10# ABC
  - FE-K FIRE EXTINGUISHER 10# K
  - EXIT LIGHT
  - STROBE ONLY WITH CANDELLA RATING AS NOTED
  - HORN STROBE WITH CANDELLA RATING AS NOTED
  - DUAL EMERGENCY LIGHT
  - SINGLE EMERGENCY LIGHT
  - SMOKE DETECTOR (CEILING)
  - HEAT DETECTOR (CEILING)
  - COMBINATION LIGHT/EXHAUST FAN
  - FIRE ALARM MASTER CONTROL PANEL
  - PULL STATION
  - EXTERIOR EGRESS LIGHT
  - 'NOT AN EXIT' SIGN W RAISED BRAILLE
  - V.A.P. VAN ACCESSIBLE

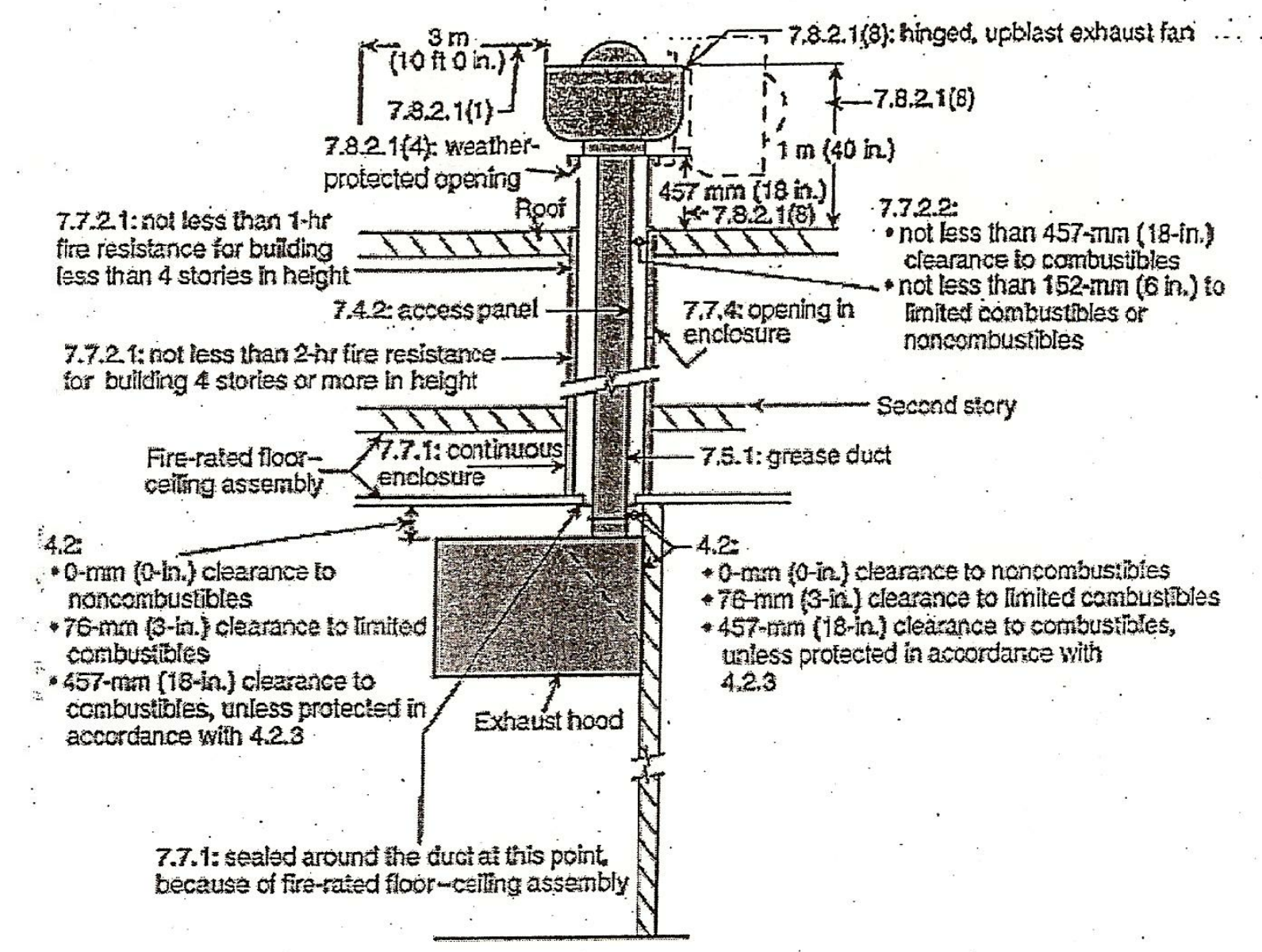
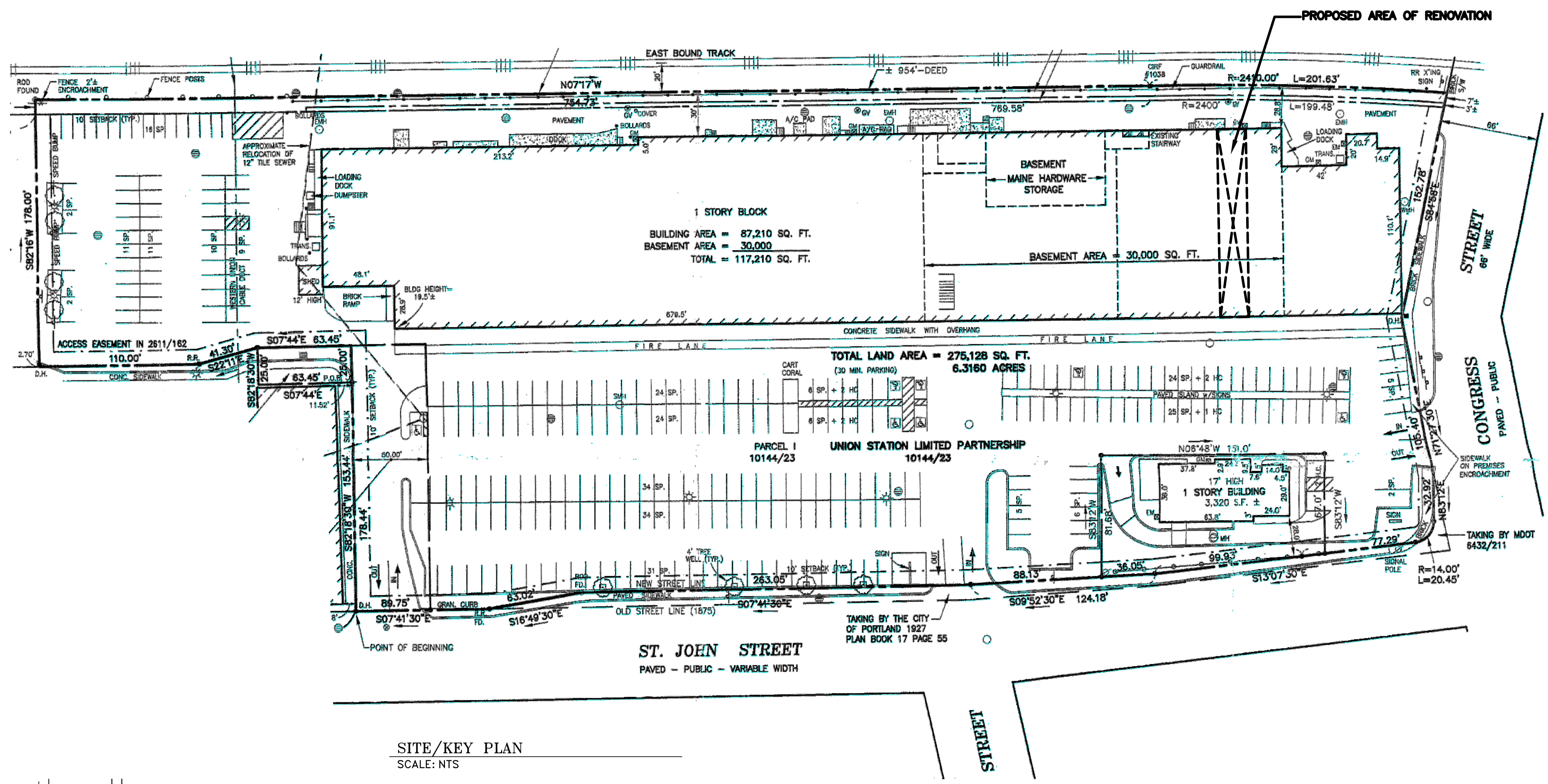


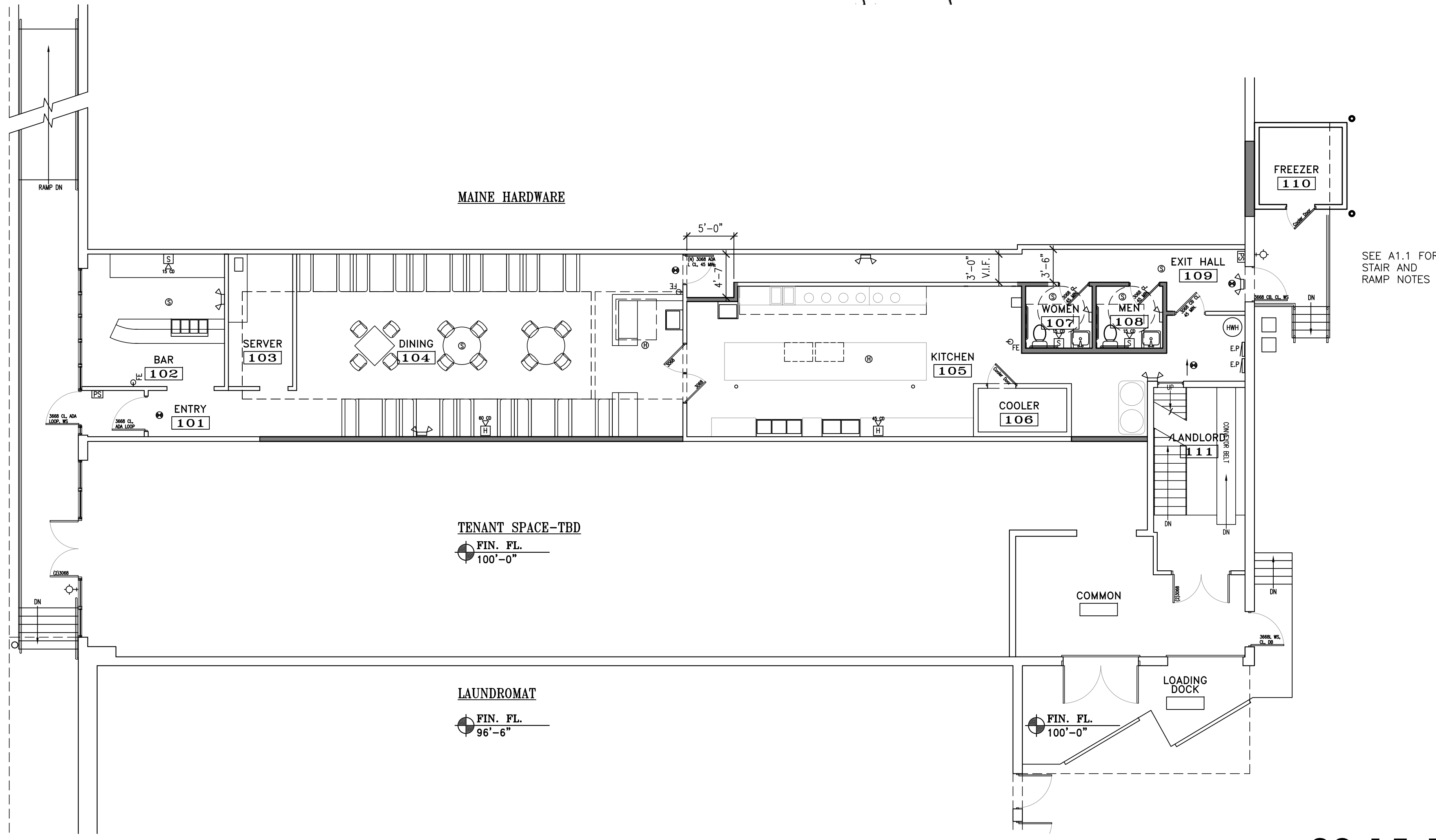
FIGURE A.4.2(a) Typical section view for building with two stories or more with fire-rated floor-ceiling assembly.

- 4.2\* Clearance.**
- 4.2.1 Where enclosures are not required, hoods, grease removal devices, exhaust fans, and ducts shall have a clearance of at least 457 mm (18 in.) to combustible material, 76 mm (3 in.) to limited-combustible material, and 0 mm (0 in.) to noncombustible material.
- 4.2.2 Where a hood, duct, or grease removal device is listed for clearances less than those required in 4.2.1 the listing requirements shall be permitted.
- 4.2.3 Clearance Reduction.
- 4.2.3.1 Where a clearance reduction system consisting of 0.33 mm (0.013 in.) (28-gauge) sheet metal spaced out 25 mm (1 in.) on noncombustible spacers is provided, there shall be a minimum of 229 mm (9 in.) clearance to combustible material.
- 4.2.3.2 Where a clearance reduction system consisting of 0.69 mm (0.027 in.) (22-gauge) sheet metal on 25 mm (1 in.) mineral wool bats or ceramic fiber blanket reinforced with wire mesh or equivalent spaced out 25 mm (1 in.) on noncombustible spacers is provided, there shall be a minimum of 76 mm (3 in.) clearance to combustible material.
- 4.2.3.3 Zero clearance to limited-combustible materials shall be permitted where protected by metal lath and plaster, ceramic tile, quarry tile, other noncombustible materials or assembly of noncombustible materials, or materials and products that are listed for the purpose of reducing clearance.

1 HOOD & DUCT SYSTEM DETAIL  
LS1 SCALE: 1/4" = 1'-0"

SEE A1.1 FOR STAIR AND RAMP NOTES

SEE A1.1 FOR STAIR AND RAMP NOTES



LIFE SAFETY PLAN  
SCALE: 1/8" = 1'-0"

09-15-14