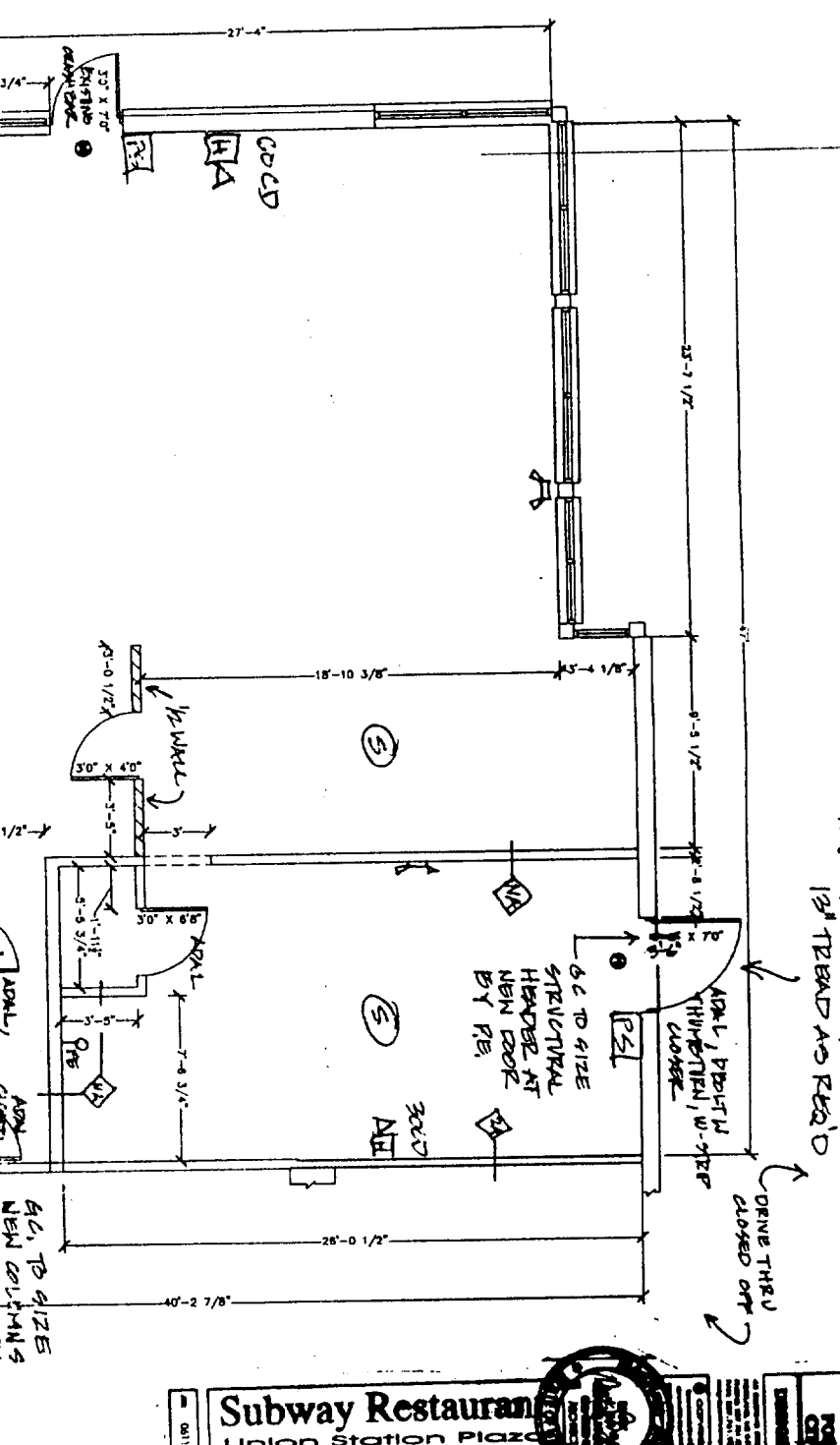
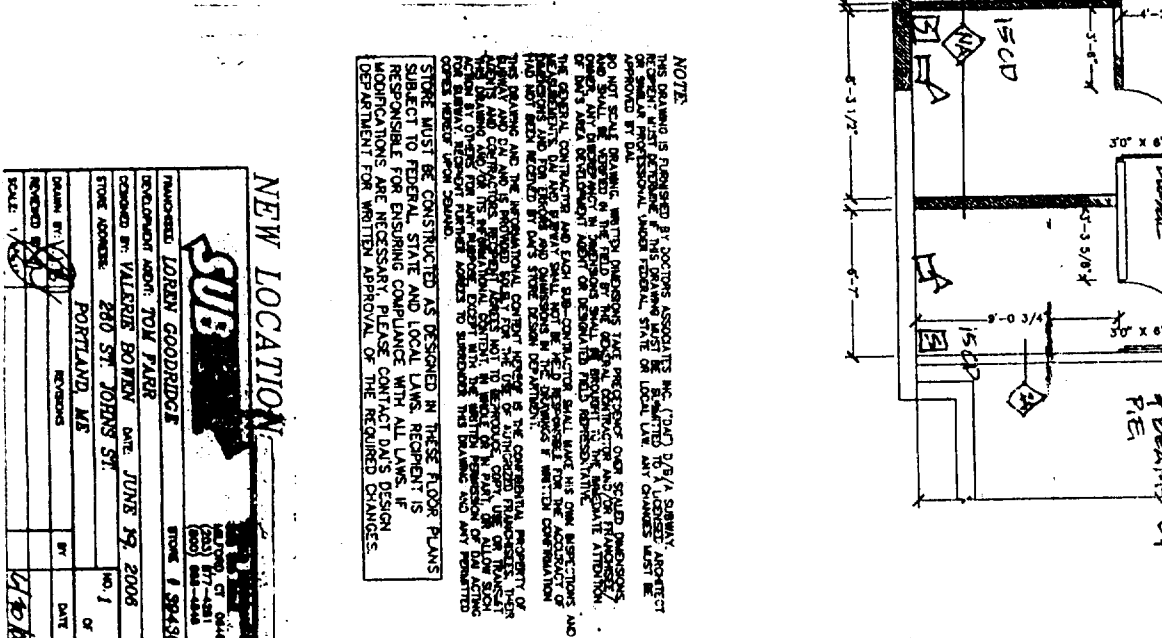
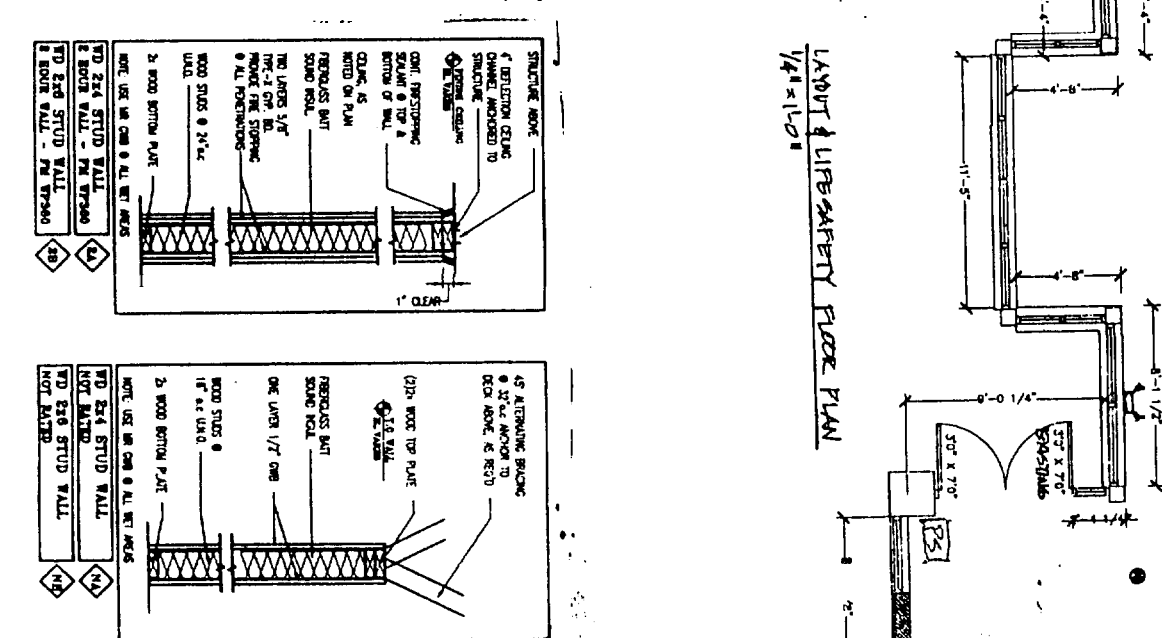
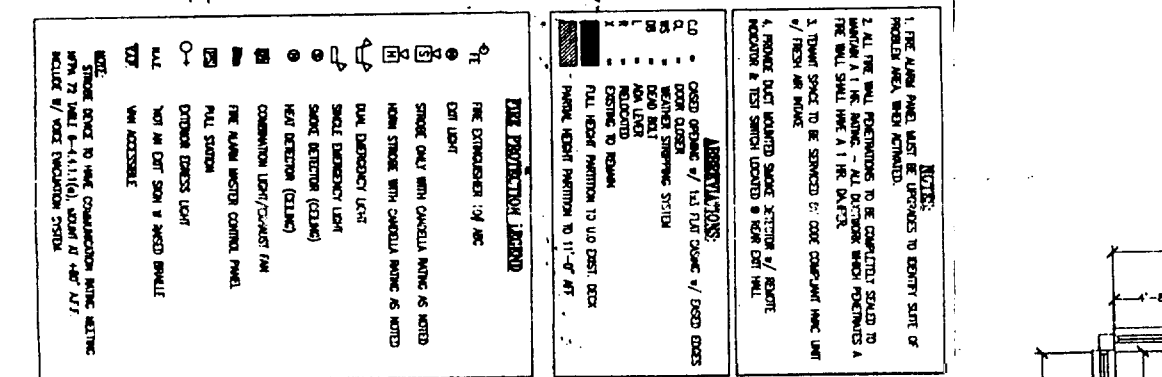
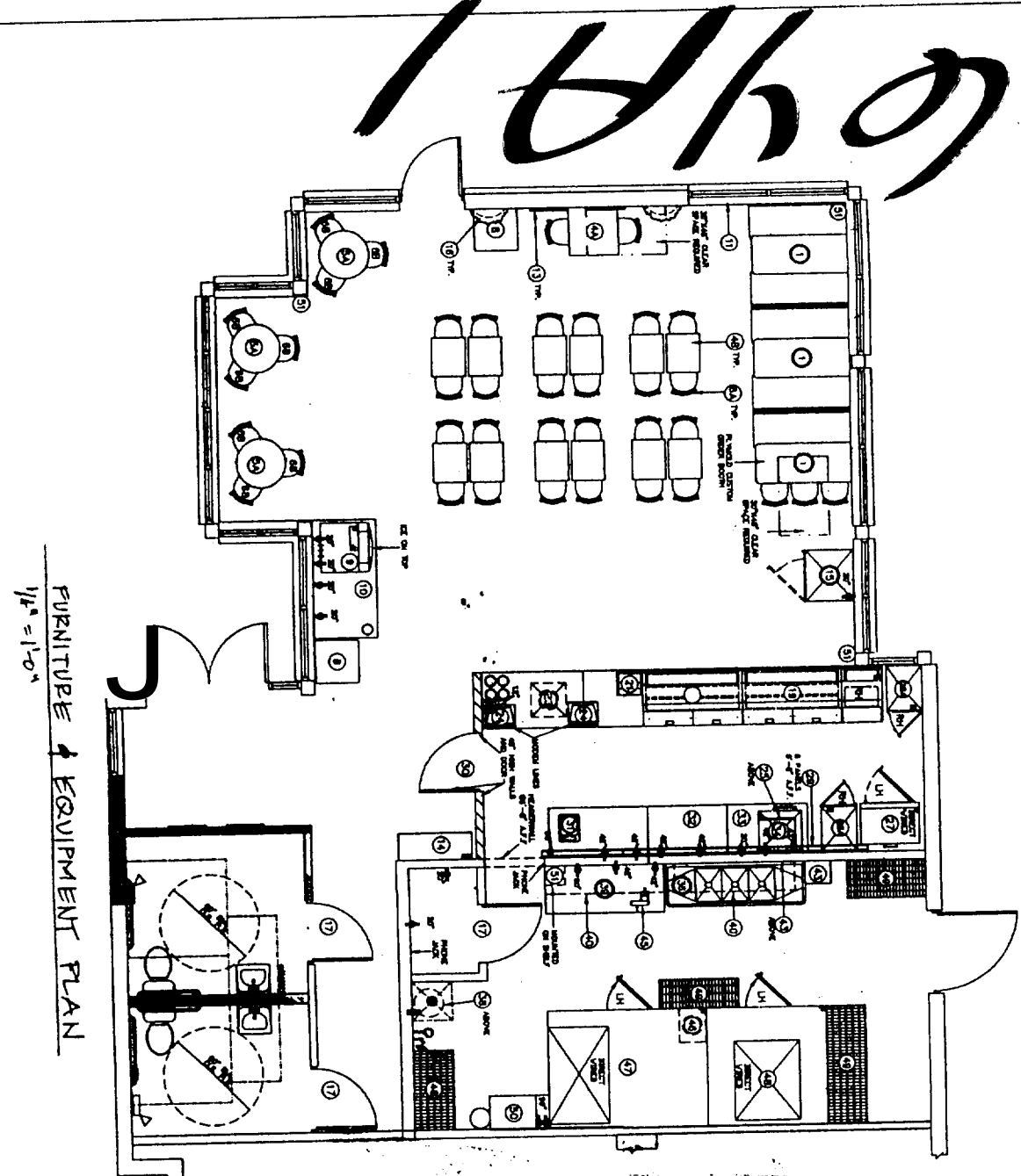


FURNITURE AND EQUIPMENT LEGEND

ITEM	MANUFACTURER	DESCRIPTION	QTY
1	WORLD	18" x 36" x 42" TABLE	1
2	WORLD	18" x 36" x 42" TABLE	1
3	WORLD	18" x 36" x 42" TABLE	1
4	WORLD	18" x 36" x 42" TABLE	1
5	WORLD	18" x 36" x 42" TABLE	1
6	WORLD	18" x 36" x 42" TABLE	1
7	WORLD	18" x 36" x 42" TABLE	1
8	WORLD	18" x 36" x 42" TABLE	1
9	WORLD	18" x 36" x 42" TABLE	1
10	WORLD	18" x 36" x 42" TABLE	1
11	WORLD	18" x 36" x 42" TABLE	1
12	WORLD	18" x 36" x 42" TABLE	1
13	WORLD	18" x 36" x 42" TABLE	1
14	WORLD	18" x 36" x 42" TABLE	1
15	WORLD	18" x 36" x 42" TABLE	1
16	WORLD	18" x 36" x 42" TABLE	1
17	WORLD	18" x 36" x 42" TABLE	1
18	WORLD	18" x 36" x 42" TABLE	1
19	WORLD	18" x 36" x 42" TABLE	1
20	WORLD	18" x 36" x 42" TABLE	1
21	WORLD	18" x 36" x 42" TABLE	1
22	WORLD	18" x 36" x 42" TABLE	1
23	WORLD	18" x 36" x 42" TABLE	1
24	WORLD	18" x 36" x 42" TABLE	1
25	WORLD	18" x 36" x 42" TABLE	1
26	WORLD	18" x 36" x 42" TABLE	1
27	WORLD	18" x 36" x 42" TABLE	1
28	WORLD	18" x 36" x 42" TABLE	1
29	WORLD	18" x 36" x 42" TABLE	1
30	WORLD	18" x 36" x 42" TABLE	1
31	WORLD	18" x 36" x 42" TABLE	1
32	WORLD	18" x 36" x 42" TABLE	1
33	WORLD	18" x 36" x 42" TABLE	1
34	WORLD	18" x 36" x 42" TABLE	1
35	WORLD	18" x 36" x 42" TABLE	1
36	WORLD	18" x 36" x 42" TABLE	1
37	WORLD	18" x 36" x 42" TABLE	1
38	WORLD	18" x 36" x 42" TABLE	1
39	WORLD	18" x 36" x 42" TABLE	1
40	WORLD	18" x 36" x 42" TABLE	1
41	WORLD	18" x 36" x 42" TABLE	1
42	WORLD	18" x 36" x 42" TABLE	1
43	WORLD	18" x 36" x 42" TABLE	1
44	WORLD	18" x 36" x 42" TABLE	1
45	WORLD	18" x 36" x 42" TABLE	1
46	WORLD	18" x 36" x 42" TABLE	1
47	WORLD	18" x 36" x 42" TABLE	1
48	WORLD	18" x 36" x 42" TABLE	1
49	WORLD	18" x 36" x 42" TABLE	1
50	WORLD	18" x 36" x 42" TABLE	1
51	WORLD	18" x 36" x 42" TABLE	1
52	WORLD	18" x 36" x 42" TABLE	1
53	WORLD	18" x 36" x 42" TABLE	1
54	WORLD	18" x 36" x 42" TABLE	1
55	WORLD	18" x 36" x 42" TABLE	1
56	WORLD	18" x 36" x 42" TABLE	1
57	WORLD	18" x 36" x 42" TABLE	1
58	WORLD	18" x 36" x 42" TABLE	1
59	WORLD	18" x 36" x 42" TABLE	1
60	WORLD	18" x 36" x 42" TABLE	1
61	WORLD	18" x 36" x 42" TABLE	1
62	WORLD	18" x 36" x 42" TABLE	1
63	WORLD	18" x 36" x 42" TABLE	1
64	WORLD	18" x 36" x 42" TABLE	1
65	WORLD	18" x 36" x 42" TABLE	1
66	WORLD	18" x 36" x 42" TABLE	1
67	WORLD	18" x 36" x 42" TABLE	1
68	WORLD	18" x 36" x 42" TABLE	1
69	WORLD	18" x 36" x 42" TABLE	1
70	WORLD	18" x 36" x 42" TABLE	1
71	WORLD	18" x 36" x 42" TABLE	1
72	WORLD	18" x 36" x 42" TABLE	1
73	WORLD	18" x 36" x 42" TABLE	1
74	WORLD	18" x 36" x 42" TABLE	1
75	WORLD	18" x 36" x 42" TABLE	1
76	WORLD	18" x 36" x 42" TABLE	1
77	WORLD	18" x 36" x 42" TABLE	1
78	WORLD	18" x 36" x 42" TABLE	1
79	WORLD	18" x 36" x 42" TABLE	1
80	WORLD	18" x 36" x 42" TABLE	1
81	WORLD	18" x 36" x 42" TABLE	1
82	WORLD	18" x 36" x 42" TABLE	1
83	WORLD	18" x 36" x 42" TABLE	1
84	WORLD	18" x 36" x 42" TABLE	1
85	WORLD	18" x 36" x 42" TABLE	1
86	WORLD	18" x 36" x 42" TABLE	1
87	WORLD	18" x 36" x 42" TABLE	1
88	WORLD	18" x 36" x 42" TABLE	1
89	WORLD	18" x 36" x 42" TABLE	1
90	WORLD	18" x 36" x 42" TABLE	1
91	WORLD	18" x 36" x 42" TABLE	1
92	WORLD	18" x 36" x 42" TABLE	1
93	WORLD	18" x 36" x 42" TABLE	1
94	WORLD	18" x 36" x 42" TABLE	1
95	WORLD	18" x 36" x 42" TABLE	1
96	WORLD	18" x 36" x 42" TABLE	1
97	WORLD	18" x 36" x 42" TABLE	1
98	WORLD	18" x 36" x 42" TABLE	1
99	WORLD	18" x 36" x 42" TABLE	1
100	WORLD	18" x 36" x 42" TABLE	1



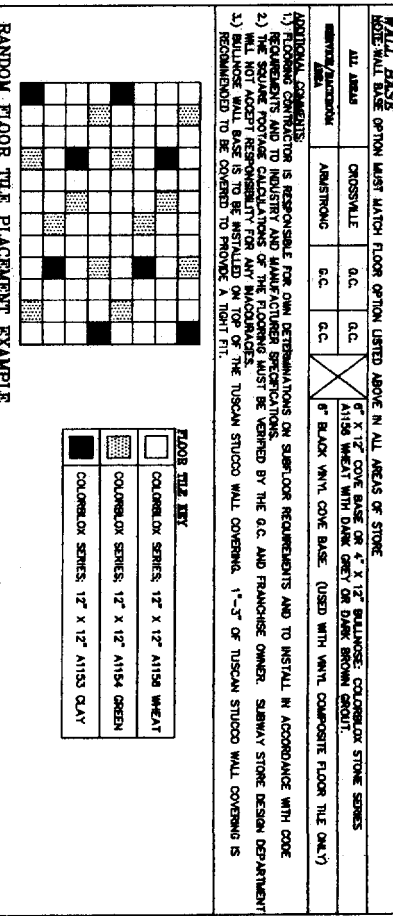
NEW LOCATION
SUBWAY RESTAURANT
MANAGED BY: VALERIE BOWEN DATE: JUNE 29, 2006
PREPARED BY: TOM FARR
STREET: 280 ST. JOHN'S ST., PORTLAND, ME
SCALE: 1/4" = 1'-0"

Note: 7" MAX GTFP, ADD 1/2" TREAD AND RISE
 DRIVE THRU CLOSED OFF

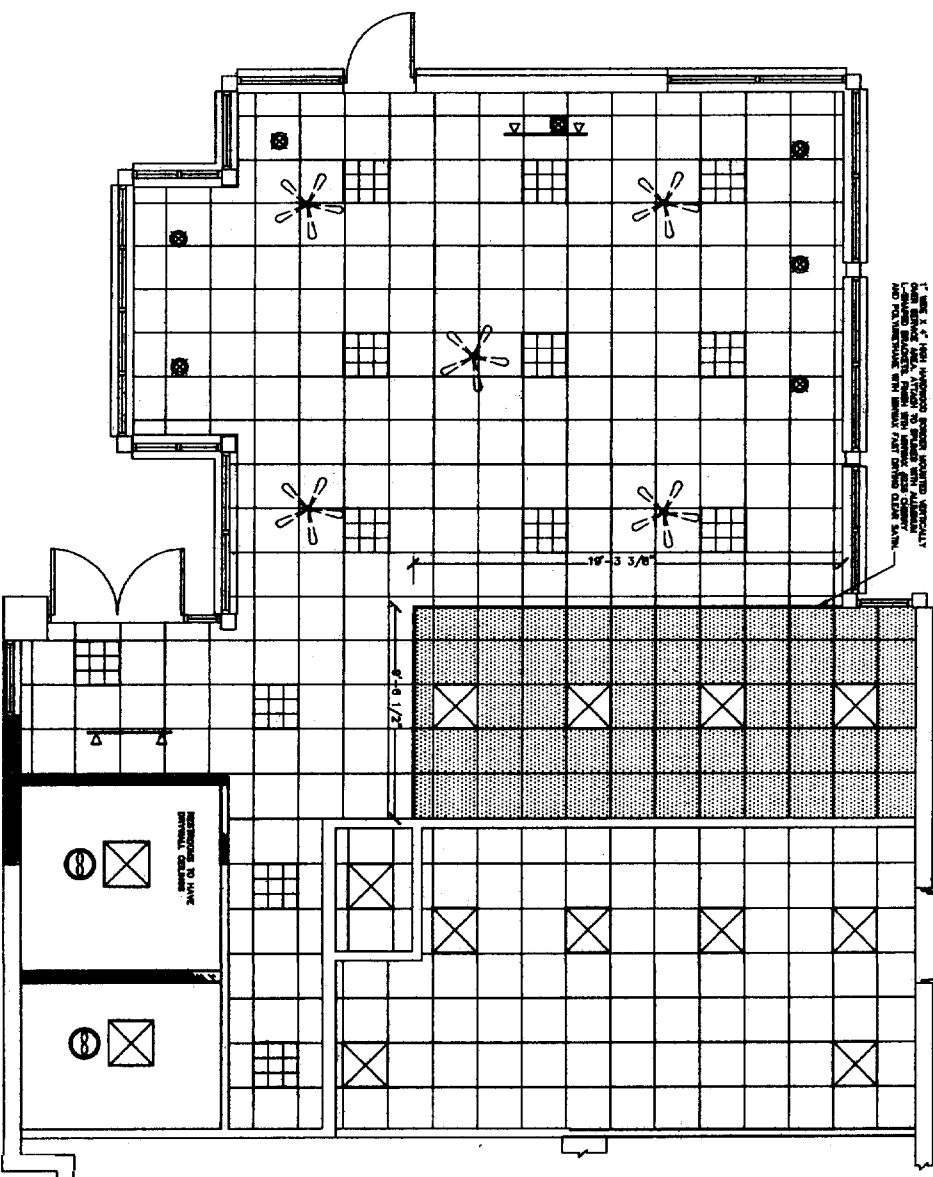


FLOOR FINISH LEGEND - TUSCANY DECOR (RANDOM PATTERN)

TILE	NO. AREA OF GROSS FLOOR/ACTUAL SQUARE FEET	DESCRIPTION
1	CROSSVALE	COLORLOX STONE SERIES: 12" X 12" A1153 WHEAT
2	CROSSVALE	COLORLOX STONE SERIES: 12" X 12" A1153 WHEAT
3	CROSSVALE	COLORLOX STONE SERIES: 12" X 12" A1153 WHEAT
4	CROSSVALE	COLORLOX STONE SERIES: 12" X 12" A1153 WHEAT
5	CROSSVALE	COLORLOX STONE SERIES: 12" X 12" A1153 WHEAT
6	CROSSVALE	COLORLOX STONE SERIES: 12" X 12" A1153 WHEAT
7	CROSSVALE	COLORLOX STONE SERIES: 12" X 12" A1153 WHEAT
8	CROSSVALE	COLORLOX STONE SERIES: 12" X 12" A1153 WHEAT
9	CROSSVALE	COLORLOX STONE SERIES: 12" X 12" A1153 WHEAT
10	CROSSVALE	COLORLOX STONE SERIES: 12" X 12" A1153 WHEAT
11	CROSSVALE	COLORLOX STONE SERIES: 12" X 12" A1153 WHEAT
12	CROSSVALE	COLORLOX STONE SERIES: 12" X 12" A1153 WHEAT
13	CROSSVALE	COLORLOX STONE SERIES: 12" X 12" A1153 WHEAT
14	CROSSVALE	COLORLOX STONE SERIES: 12" X 12" A1153 WHEAT
15	CROSSVALE	COLORLOX STONE SERIES: 12" X 12" A1153 WHEAT
16	CROSSVALE	COLORLOX STONE SERIES: 12" X 12" A1153 WHEAT
17	CROSSVALE	COLORLOX STONE SERIES: 12" X 12" A1153 WHEAT
18	CROSSVALE	COLORLOX STONE SERIES: 12" X 12" A1153 WHEAT
19	CROSSVALE	COLORLOX STONE SERIES: 12" X 12" A1153 WHEAT
20	CROSSVALE	COLORLOX STONE SERIES: 12" X 12" A1153 WHEAT
21	CROSSVALE	COLORLOX STONE SERIES: 12" X 12" A1153 WHEAT
22	CROSSVALE	COLORLOX STONE SERIES: 12" X 12" A1153 WHEAT
23	CROSSVALE	COLORLOX STONE SERIES: 12" X 12" A1153 WHEAT
24	CROSSVALE	COLORLOX STONE SERIES: 12" X 12" A1153 WHEAT
25	CROSSVALE	COLORLOX STONE SERIES: 12" X 12" A1153 WHEAT
26	CROSSVALE	COLORLOX STONE SERIES: 12" X 12" A1153 WHEAT
27	CROSSVALE	COLORLOX STONE SERIES: 12" X 12" A1153 WHEAT
28	CROSSVALE	COLORLOX STONE SERIES: 12" X 12" A1153 WHEAT
29	CROSSVALE	COLORLOX STONE SERIES: 12" X 12" A1153 WHEAT
30	CROSSVALE	COLORLOX STONE SERIES: 12" X 12" A1153 WHEAT
31	CROSSVALE	COLORLOX STONE SERIES: 12" X 12" A1153 WHEAT
32	CROSSVALE	COLORLOX STONE SERIES: 12" X 12" A1153 WHEAT
33	CROSSVALE	COLORLOX STONE SERIES: 12" X 12" A1153 WHEAT
34	CROSSVALE	COLORLOX STONE SERIES: 12" X 12" A1153 WHEAT
35	CROSSVALE	COLORLOX STONE SERIES: 12" X 12" A1153 WHEAT
36	CROSSVALE	COLORLOX STONE SERIES: 12" X 12" A1153 WHEAT
37	CROSSVALE	COLORLOX STONE SERIES: 12" X 12" A1153 WHEAT
38	CROSSVALE	COLORLOX STONE SERIES: 12" X 12" A1153 WHEAT
39	CROSSVALE	COLORLOX STONE SERIES: 12" X 12" A1153 WHEAT
40	CROSSVALE	COLORLOX STONE SERIES: 12" X 12" A1153 WHEAT
41	CROSSVALE	COLORLOX STONE SERIES: 12" X 12" A1153 WHEAT
42	CROSSVALE	COLORLOX STONE SERIES: 12" X 12" A1153 WHEAT
43	CROSSVALE	COLORLOX STONE SERIES: 12" X 12" A1153 WHEAT
44	CROSSVALE	COLORLOX STONE SERIES: 12" X 12" A1153 WHEAT
45	CROSSVALE	COLORLOX STONE SERIES: 12" X 12" A1153 WHEAT
46	CROSSVALE	COLORLOX STONE SERIES: 12" X 12" A1153 WHEAT
47	CROSSVALE	COLORLOX STONE SERIES: 12" X 12" A1153 WHEAT
48	CROSSVALE	COLORLOX STONE SERIES: 12" X 12" A1153 WHEAT
49	CROSSVALE	COLORLOX STONE SERIES: 12" X 12" A1153 WHEAT
50	CROSSVALE	COLORLOX STONE SERIES: 12" X 12" A1153 WHEAT
51	CROSSVALE	COLORLOX STONE SERIES: 12" X 12" A1153 WHEAT
52	CROSSVALE	COLORLOX STONE SERIES: 12" X 12" A1153 WHEAT
53	CROSSVALE	COLORLOX STONE SERIES: 12" X 12" A1153 WHEAT
54	CROSSVALE	COLORLOX STONE SERIES: 12" X 12" A1153 WHEAT
55	CROSSVALE	COLORLOX STONE SERIES: 12" X 12" A1153 WHEAT
56	CROSSVALE	COLORLOX STONE SERIES: 12" X 12" A1153 WHEAT
57	CROSSVALE	COLORLOX STONE SERIES: 12" X 12" A1153 WHEAT
58	CROSSVALE	COLORLOX STONE SERIES: 12" X 12" A1153 WHEAT
59	CROSSVALE	COLORLOX STONE SERIES: 12" X 12" A1153 WHEAT
60	CROSSVALE	COLORLOX STONE SERIES: 12" X 12" A1153 WHEAT
61	CROSSVALE	COLORLOX STONE SERIES: 12" X 12" A1153 WHEAT
62	CROSSVALE	COLORLOX STONE SERIES: 12" X 12" A1153 WHEAT
63	CROSSVALE	COLORLOX STONE SERIES: 12" X 12" A1153 WHEAT
64	CROSSVALE	COLORLOX STONE SERIES: 12" X 12" A1153 WHEAT
65	CROSSVALE	COLORLOX STONE SERIES: 12" X 12" A1153 WHEAT
66	CROSSVALE	COLORLOX STONE SERIES: 12" X 12" A1153 WHEAT
67	CROSSVALE	COLORLOX STONE SERIES: 12" X 12" A1153 WHEAT
68	CROSSVALE	COLORLOX STONE SERIES: 12" X 12" A1153 WHEAT
69	CROSSVALE	COLORLOX STONE SERIES: 12" X 12" A1153 WHEAT
70	CROSSVALE	COLORLOX STONE SERIES: 12" X 12" A1153 WHEAT
71	CROSSVALE	COLORLOX STONE SERIES: 12" X 12" A1153 WHEAT
72	CROSSVALE	COLORLOX STONE SERIES: 12" X 12" A1153 WHEAT
73	CROSSVALE	COLORLOX STONE SERIES: 12" X 12" A1153 WHEAT
74	CROSSVALE	COLORLOX STONE SERIES: 12" X 12" A1153 WHEAT
75	CROSSVALE	COLORLOX STONE SERIES: 12" X 12" A1153 WHEAT
76	CROSSVALE	COLORLOX STONE SERIES: 12" X 12" A1153 WHEAT
77	CROSSVALE	COLORLOX STONE SERIES: 12" X 12" A1153 WHEAT
78	CROSSVALE	COLORLOX STONE SERIES: 12" X 12" A1153 WHEAT
79	CROSSVALE	COLORLOX STONE SERIES: 12" X 12" A1153 WHEAT
80	CROSSVALE	COLORLOX STONE SERIES: 12" X 12" A1153 WHEAT
81	CROSSVALE	COLORLOX STONE SERIES: 12" X 12" A1153 WHEAT
82	CROSSVALE	COLORLOX STONE SERIES: 12" X 12" A1153 WHEAT
83	CROSSVALE	COLORLOX STONE SERIES: 12" X 12" A1153 WHEAT
84	CROSSVALE	COLORLOX STONE SERIES: 12" X 12" A1153 WHEAT
85	CROSSVALE	COLORLOX STONE SERIES: 12" X 12" A1153 WHEAT
86	CROSSVALE	COLORLOX STONE SERIES: 12" X 12" A1153 WHEAT
87	CROSSVALE	COLORLOX STONE SERIES: 12" X 12" A1153 WHEAT
88	CROSSVALE	COLORLOX STONE SERIES: 12" X 12" A1153 WHEAT
89	CROSSVALE	COLORLOX STONE SERIES: 12" X 12" A1153 WHEAT
90	CROSSVALE	COLORLOX STONE SERIES: 12" X 12" A1153 WHEAT
91	CROSSVALE	COLORLOX STONE SERIES: 12" X 12" A1153 WHEAT
92	CROSSVALE	COLORLOX STONE SERIES: 12" X 12" A1153 WHEAT
93	CROSSVALE	COLORLOX STONE SERIES: 12" X 12" A1153 WHEAT
94	CROSSVALE	COLORLOX STONE SERIES: 12" X 12" A1153 WHEAT
95	CROSSVALE	COLORLOX STONE SERIES: 12" X 12" A1153 WHEAT
96	CROSSVALE	COLORLOX STONE SERIES: 12" X 12" A1153 WHEAT
97	CROSSVALE	COLORLOX STONE SERIES: 12" X 12" A1153 WHEAT
98	CROSSVALE	COLORLOX STONE SERIES: 12" X 12" A1153 WHEAT
99	CROSSVALE	COLORLOX STONE SERIES: 12" X 12" A1153 WHEAT
100	CROSSVALE	COLORLOX STONE SERIES: 12" X 12" A1153 WHEAT



ADDITIONAL COMMENTS:
 1) FLOORING CONTRACTOR IS RESPONSIBLE FOR OWN DETERMINATIONS ON SUBLOOR REQUIREMENTS AND TO INSTALL IN ACCORDANCE WITH CODE REQUIREMENTS AND TO INDUSTRY AND MANUFACTURER SPECIFICATIONS.
 2) THE CONTRACTOR SHALL BE RESPONSIBLE FOR OBTAINING ALL NECESSARY PERMITS AND APPROVALS FROM ALL APPLICABLE AGENCIES.
 3) BALANCE WALL BASE IS TO BE INSTALLED ON TOP OF THE TUSCANY STUCCO WALL COVERING. 1"-3" OF TUSCANY STUCCO WALL COVERING IS RECOMMENDED TO BE COVERED TO PROVIDE A TIGHT FIT.



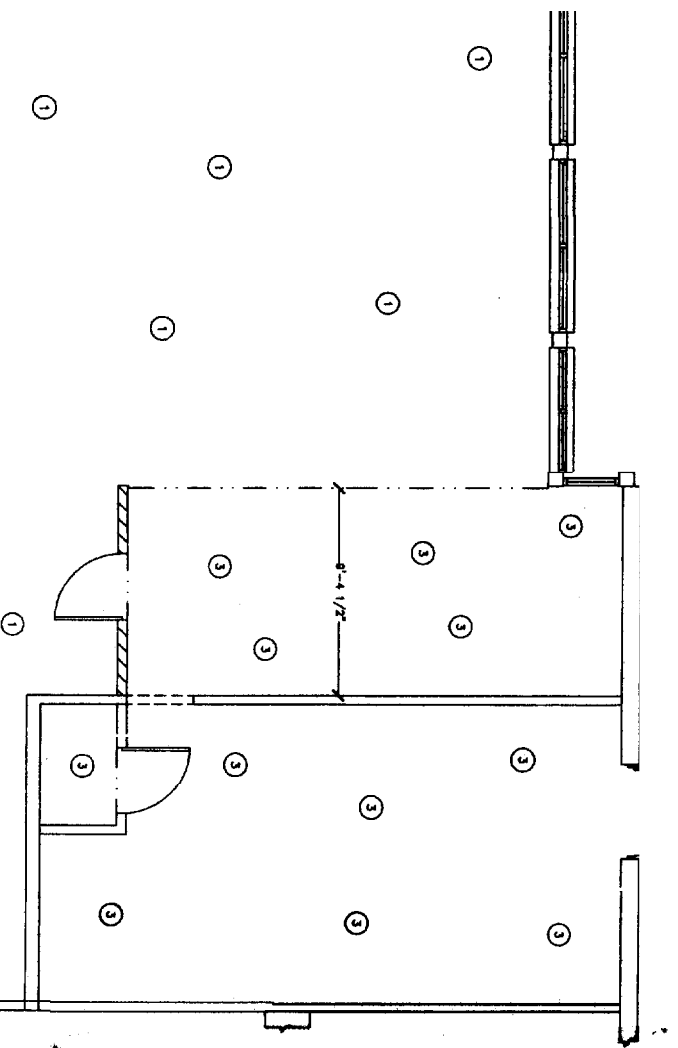
CEILING & LIGHTING PLAN
 1/4" = 1'-0"

CEILING & LIGHTING LEGEND

SYMBOL	DESCRIPTION	REMARKS	NO.	NOTES
☒	RECESSED FLUORESCENT FIXTURE	RECESSED FLUORESCENT FIXTURE (SP-SERIES/ST-1200B)	11	RECESSED FLUORESCENT FIXTURE (SP-SERIES/ST-1200B) USES (2) P-40W/250S BULB 2011 LIGHT BALLAST.
☒	RECESSED FLUORESCENT FIXTURE W/ PARABOLIC LENS	RECESSED FLUORESCENT FIXTURE W/ PARABOLIC LENS (SP-SERIES/ST-1200B)	13	RECESSED FLUORESCENT FIXTURE W/ PARABOLIC LENS (SP-SERIES/ST-1200B) USES (2) P-40W/250S BULB 2011 LIGHT BALLAST.
☒	WALL MOUNT TRACK LIGHTING (DOUBLE FIXTURE)	WALL MOUNT TRACK LIGHTING (DOUBLE FIXTURE)	2	RECESSED FLUORESCENT FIXTURE (SP-SERIES/ST-1200B) USES (2) P-40W/250S BULB 2011 LIGHT BALLAST.
☒	WALL DROP-IN	WALL DROP-IN	2	RECESSED FLUORESCENT FIXTURE (SP-SERIES/ST-1200B) USES (2) P-40W/250S BULB 2011 LIGHT BALLAST.
☒	ADJUSTABLE DROP-IN	ADJUSTABLE DROP-IN	2	RECESSED FLUORESCENT FIXTURE (SP-SERIES/ST-1200B) USES (2) P-40W/250S BULB 2011 LIGHT BALLAST.
☒	ADJUSTABLE DROP-IN WITH SEPARATE EXHAUST FAN	ADJUSTABLE DROP-IN WITH SEPARATE EXHAUST FAN	2	RECESSED FLUORESCENT FIXTURE (SP-SERIES/ST-1200B) USES (2) P-40W/250S BULB 2011 LIGHT BALLAST.
☒	PENDANT LIGHT	PENDANT LIGHT	7	RECESSED FLUORESCENT FIXTURE (SP-SERIES/ST-1200B) USES (2) P-40W/250S BULB 2011 LIGHT BALLAST.
☒	CEILING FAN	CEILING FAN	5	RECESSED FLUORESCENT FIXTURE (SP-SERIES/ST-1200B) USES (2) P-40W/250S BULB 2011 LIGHT BALLAST.

GENERAL NOTES

- CEILING HEIGHT IS 7'-0" UNLESS OTHERWISE NOTED.
- ALL ELECTRICAL WORK SHALL BE IN ACCORDANCE WITH THE NATIONAL ELECTRICAL CODE (NEC) AND ALL APPLICABLE LOCAL CODES.
- RECESSED FLUORESCENT FIXTURES SHALL BE INSTALLED IN ACCORDANCE WITH THE MANUFACTURER'S INSTALLATION INSTRUCTIONS.
- WALL MOUNT TRACK LIGHTING SHALL BE INSTALLED IN ACCORDANCE WITH THE MANUFACTURER'S INSTALLATION INSTRUCTIONS.
- ADJUSTABLE DROP-IN FIXTURES SHALL BE INSTALLED IN ACCORDANCE WITH THE MANUFACTURER'S INSTALLATION INSTRUCTIONS.
- PENDANT LIGHTS SHALL BE INSTALLED IN ACCORDANCE WITH THE MANUFACTURER'S INSTALLATION INSTRUCTIONS.
- CEILING FANS SHALL BE INSTALLED IN ACCORDANCE WITH THE MANUFACTURER'S INSTALLATION INSTRUCTIONS.
- ALL WORK SHALL BE SUBJECT TO INSPECTION AND APPROVAL BY THE APPLICABLE AGENCIES.



FLOOR FINISHES PLAN
 1/4" = 1'-0"

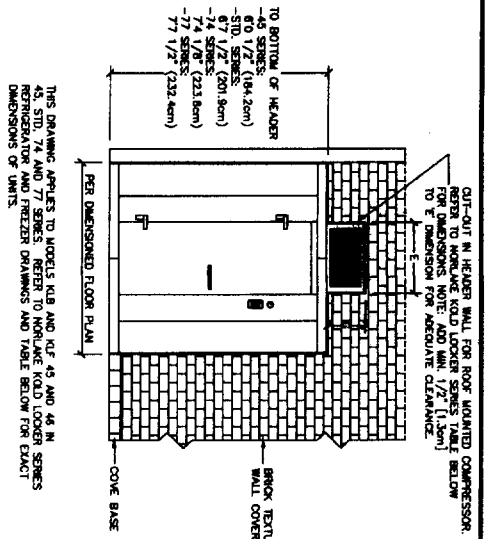
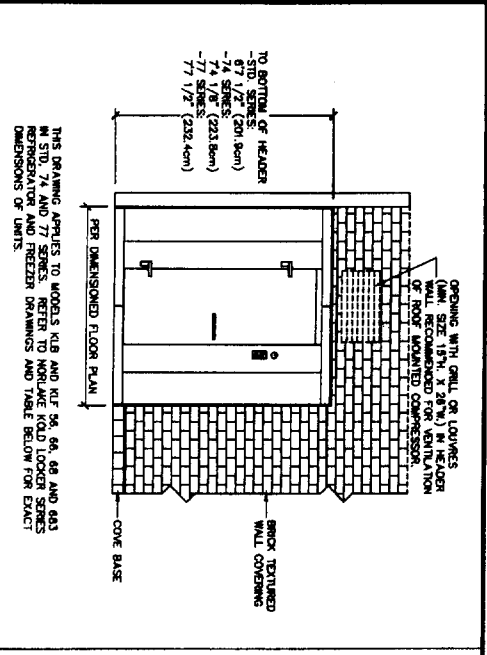
NOTE:
 THIS DRAWING IS PREPARED BY ARCHITECTS ASSOCIATES INC. (D/C) 2001 S. BROADWAY, PORTLAND, ME 04103. THE CONTRACTOR SHALL BE RESPONSIBLE FOR OBTAINING ALL NECESSARY PERMITS AND APPROVALS FROM ALL APPLICABLE AGENCIES. THE CONTRACTOR SHALL BE RESPONSIBLE FOR OBTAINING ALL NECESSARY PERMITS AND APPROVALS FROM ALL APPLICABLE AGENCIES. THE CONTRACTOR SHALL BE RESPONSIBLE FOR OBTAINING ALL NECESSARY PERMITS AND APPROVALS FROM ALL APPLICABLE AGENCIES.

NEW DEBARTON

SUB

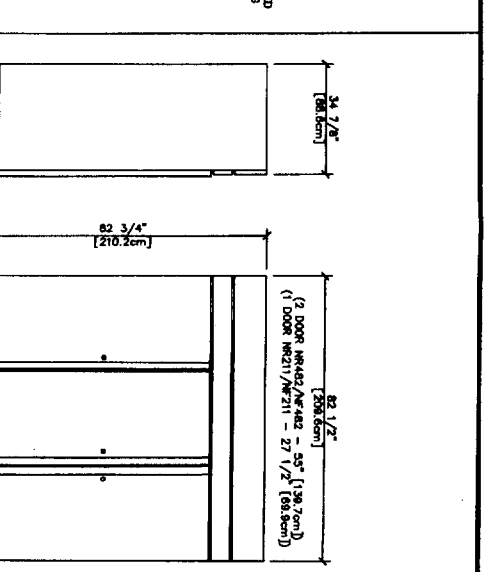
ARCHITECT: LORENZ GOODRIDGE
 DEVELOPMENT MGMT: TOM FLAHER
 DESIGNED BY: VALERIE BOYER DATE: JUNE 19, 2006
 PORTLAND, ME
 NO. 2 OF 3
 SCALE: 1/4" = 1'-0"

Subway Restaurant
 Union Station Plaza
 Portland, ME. 04110



NORLAKE WALK-IN 5' X 6' 6" OR 6' X 8' OR REFRIGERATOR OR FREEZER WITH FACE THROUGH WALL. TYPICAL ELEVATION DETAIL.

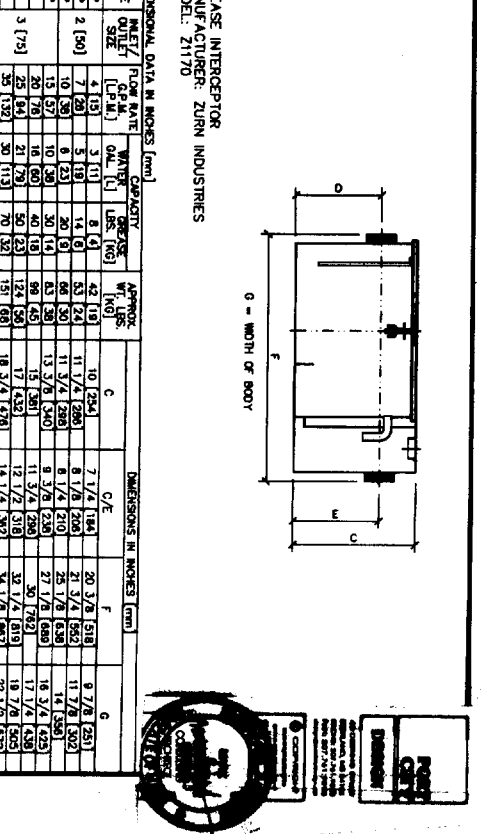
NORLAKE WALK-IN 4' X 5' OR 4' X 6' REFRIGERATOR OR FREEZER WITH FACE THROUGH WALL. TYPICAL ELEVATION DETAIL.



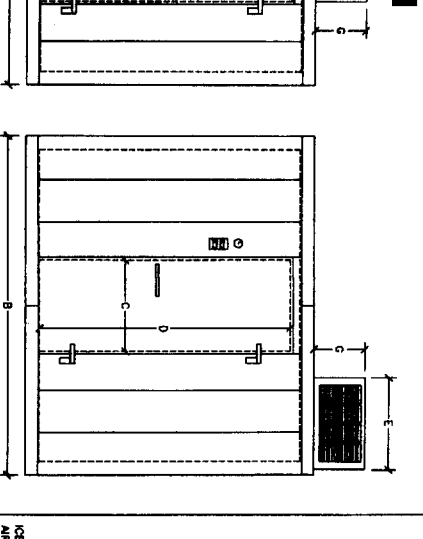
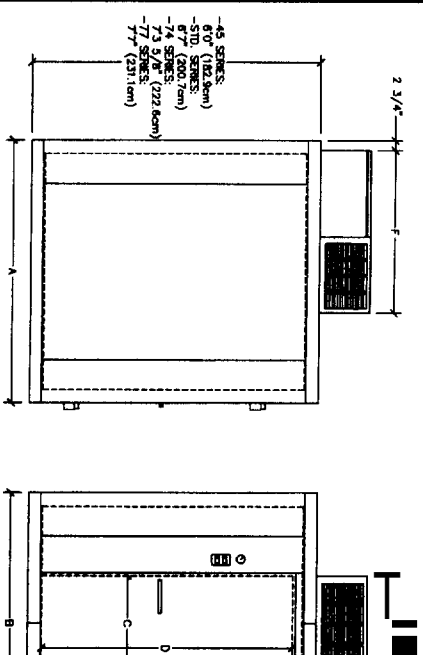
NORLAKE REFRIGERATOR / FREEZER

MODEL #	VOLTS/HZ/PH	AMPS	REFRIGERANT Q.L. FT.
NR763SM/0	115/60/1	10	22.5
NR763SM/1	115/60/1	12	48.8
NR763SM/2	208-230/60/1	12	74.0
NR763SM/3	115/60/1	12	22.5
NR763SM/4	115/60/1	14	48.8
NR763SM/5	208-230/60/1	11	74.0

115V SYSTEMS - CO2 & R134A SUPPLIED
208-230V SYSTEMS - R134A SUPPLIED
NSF APPROVED
UL LISTING #64-3931
CSA LISTING 18042-23

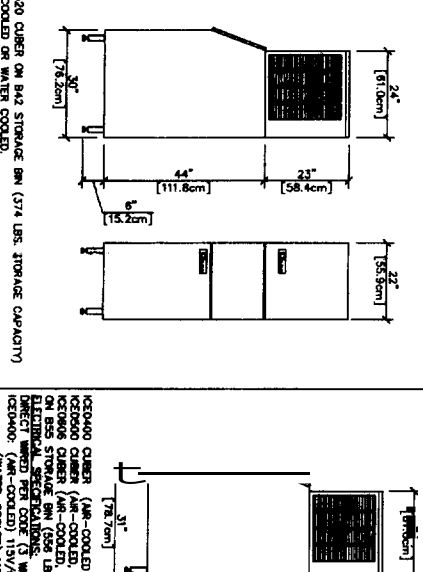


ZURN GREASE INTERCEPTOR

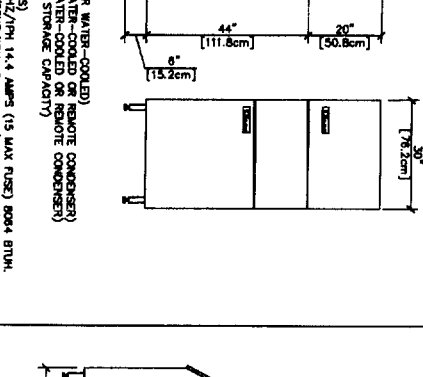


NORLAKE WALK-IN 5' X 6' 6" OR 6' X 8' OR REFRIGERATOR OR FREEZER WITH FACE THROUGH WALL. TYPICAL ELEVATION DETAIL.

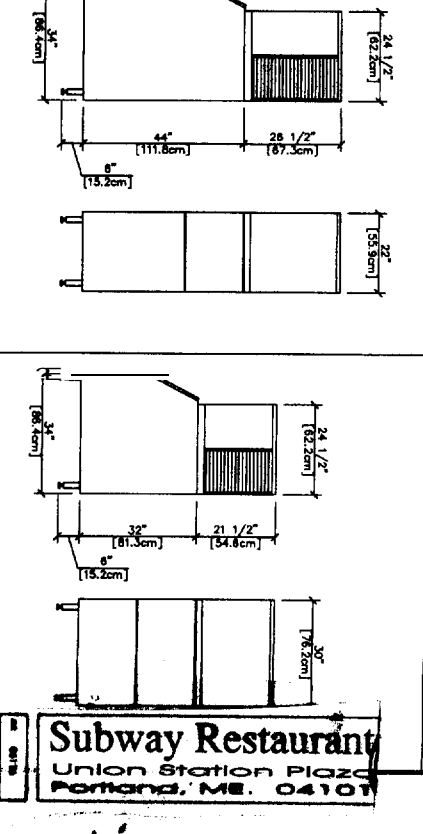
NORLAKE WALK-IN 4' X 5' OR 4' X 6' REFRIGERATOR OR FREEZER WITH FACE THROUGH WALL. TYPICAL ELEVATION DETAIL.



NORLAKE REFRIGERATOR / FREEZER



NORLAKE REFRIGERATOR / FREEZER

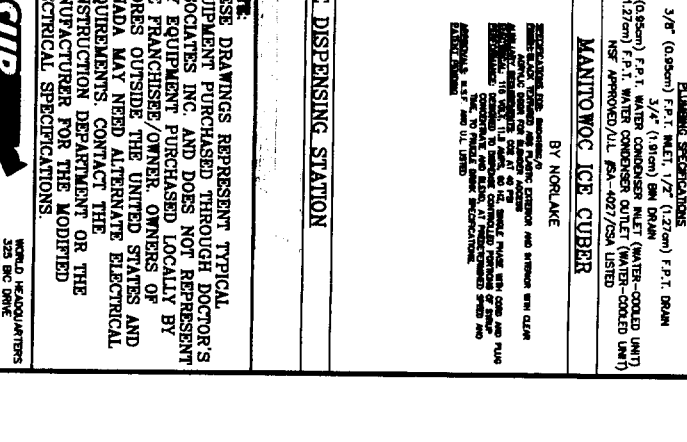
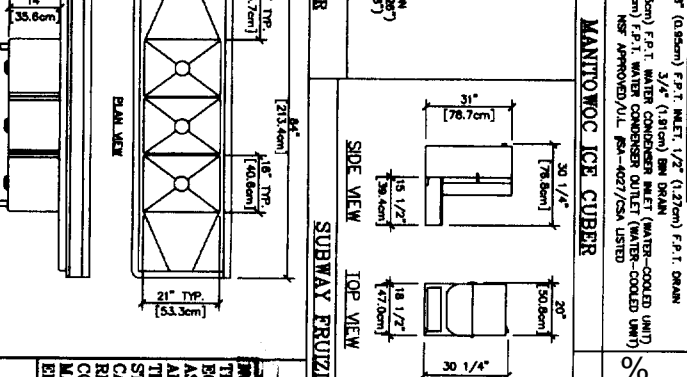
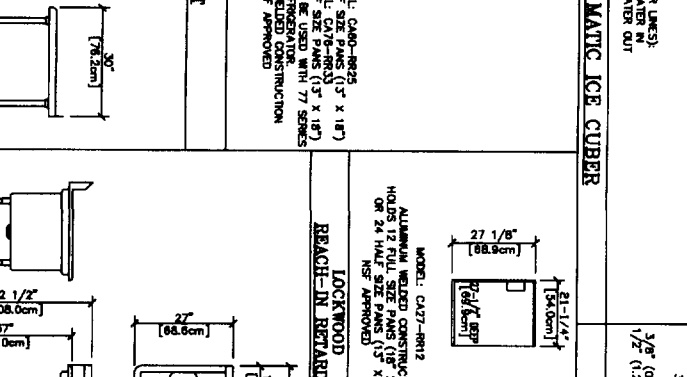
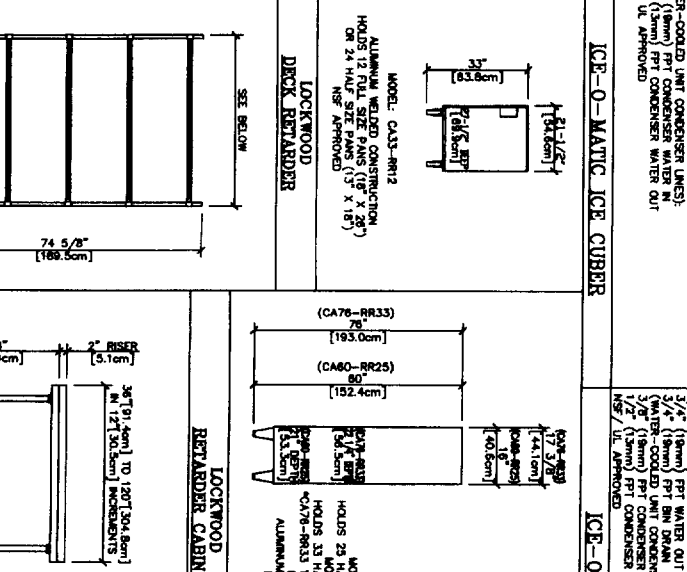


ZURN GREASE INTERCEPTOR

NOTE: R.B. = REFRIGERATOR, F.F. = FREEZER, MODEL KE766 or KE768 SHOWN ABOVE

MODEL #	A	B	C	D	E	F	G	REFRIGERANT Q.L. FT.	AMPS	VOLTS/HZ/PH	REFRIGERANT Q.L. FT.	AMPS
KE766-CR-SUB	121.9	121.9	121.9	121.9	121.9	121.9	121.9	22.5	10	115/60/1	22.5	10
KE766-CR-SUB	121.9	121.9	121.9	121.9	121.9	121.9	121.9	48.8	12	115/60/1	48.8	12
KE766-CR-SUB	121.9	121.9	121.9	121.9	121.9	121.9	121.9	74.0	12	208-230/60/1	74.0	12
KE766-CR-SUB	121.9	121.9	121.9	121.9	121.9	121.9	121.9	22.5	12	115/60/1	22.5	12
KE766-CR-SUB	121.9	121.9	121.9	121.9	121.9	121.9	121.9	48.8	14	115/60/1	48.8	14
KE766-CR-SUB	121.9	121.9	121.9	121.9	121.9	121.9	121.9	74.0	11	208-230/60/1	74.0	11

NOTE: DOOR SECTION REQUIRES SEPARATE 115/60/1 HOOK UP AND DRAWS 2.3 AMPS. ABOVE SPECIFICATIONS FOR CEILING MOUNT SYSTEMS AND OTHER INSTALLATION PROBLEMS. ALL TO BE UNDER WOOD. MANUFACTURER'S SPECIFICATIONS. DO NOT STORE FLAMMABLE OR TOXIC MATERIALS IN REFRIGERATOR. REFRIGERATOR IS RECOMMENDED FROM TOP OF ROOF MOUNTED CASSETTE PACK REFRIGERATION SYSTEM TO CEILING FOR SERVICE PURPOSES (IF AVAILABLE). 12" CLEARANCE IS RECOMMENDED FOR VENTILATION OF ROOF MOUNTED COMPRESSOR. REFRIGERATOR AND FREEZER DRAWINGS AND TABLE BELOW FOR EXACT DIMENSIONS OF UNITS.



MANITOWOC ICE CUBER

Subway Restaurant
Union Station Plaza
Portland, ME 04101

Subway
COOLER INSTALLATION ELEVATION - TYPICAL EQUIPMENT

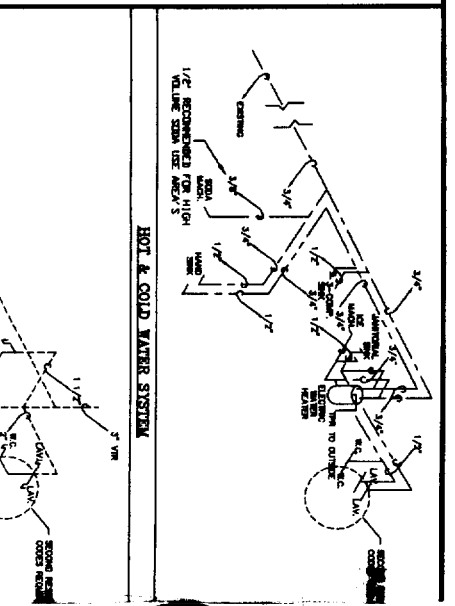
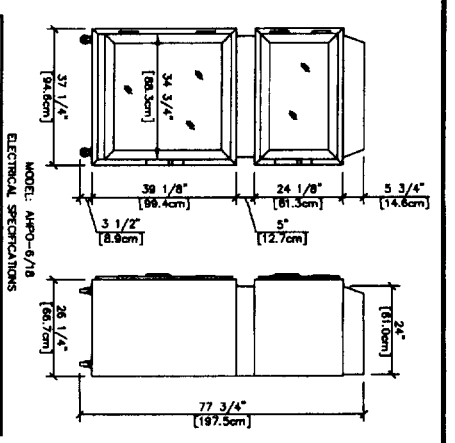
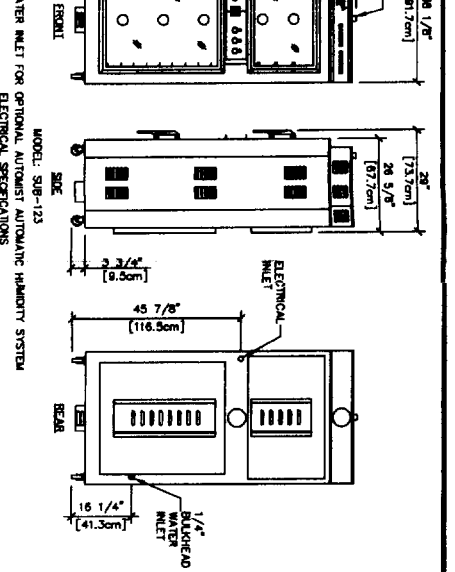
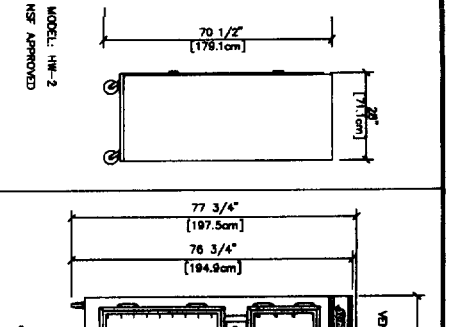
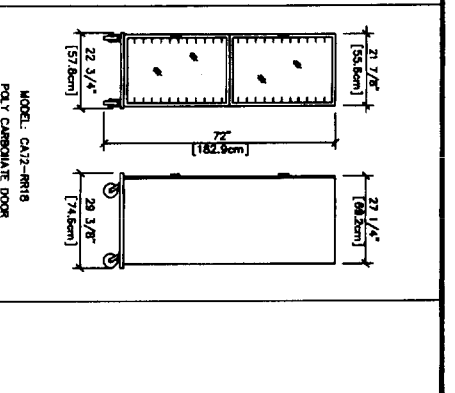
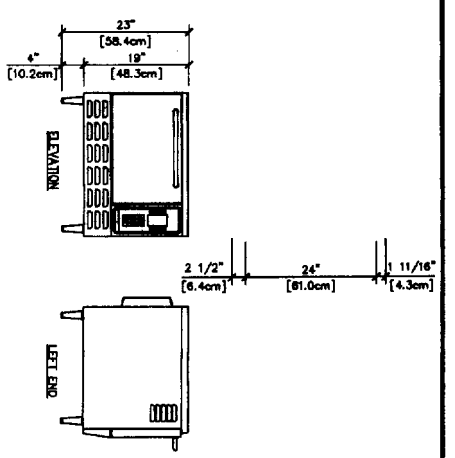
TUSCANY BACK-UP SHEET # 2 OF 3

NO.	REVISIONS	DATE	SCALE	NO.
1	ISSUED	1/2/01	AS SHOWN	1
2	REVISED	1/2/01	AS SHOWN	2
3	REVISED	1/2/01	AS SHOWN	3
4	REVISED	1/2/01	AS SHOWN	4

DRIVEN BY: DUNN, S. DESIGNER: DATE: 1/2/01
SCALE: AS SHOWN
DRAWN BY: DATE: 1/2/01
CHECKED BY: DATE: 1/2/01
APPROVED BY: DATE: 1/2/01

NOTE: THESE DRAWINGS REPRESENT TYPICAL EQUIPMENT PURCHASED THROUGH DOCTOR'S ASSOCIATES INC. AND DOES NOT REPRESENT ANY EQUIPMENT PURCHASED LOCALLY BY THE FRANCHISEE/OWNER. OWNERS OF STORES OUTSIDE THE UNITED STATES AND REQUIREMENTS CONTACT THE MANUFACTURER FOR THE MODIFIED ELECTRICAL SPECIFICATIONS.

WORLD HEADQUARTERS
222 B.C. DRIVE
MILWAUKEE, WI 53210
(414) 224-4444



IMPROVED APPROXIMATE CONNECTION DATA
MULTI-SPEED CONNECTION BLOWER WITH INDEPENDENTLY CONTROLLED BOTTOM BROWNING ELEMENT.
STAINLESS STEEL FRONT, TOP, SIDES AND BACK.
ELECTRICAL: 208V, 1 PH, 1.5 AMP.
NOMINAL RATING 30 AMP.
10 GAUGE, 3 CONDUCTOR, 5 FOOT CORDSET WITH NEMA 6-30 PLUG.
HEATING ELEMENT: 6540 WATTS.
SAFETY STANDARDS: U.S. FDA, NSF, FDA, FCC.

MODEL: C43-8R15
POLY CARBONATE DOOR
NSF APPROVED

MODEL: HM-2
NSF APPROVED

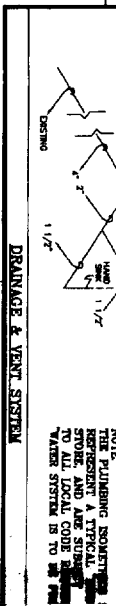
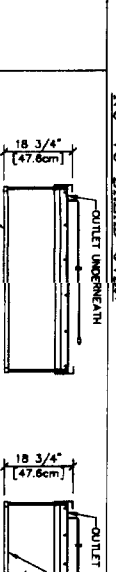
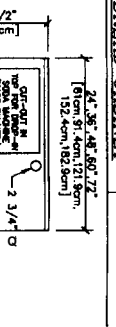
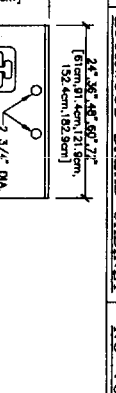
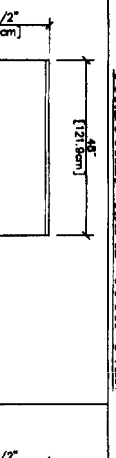
MODEL: SB8-123
WATER INLET FOR OPTIONAL AUTOMATIC HUMIDITY SYSTEM
FIELD WIRING REQUIRED PER LOCAL CODE

VOLUME	PHASE	AMPS	DISPLACEMENT	NO. WATTS	SHR. WT.
120/208	1	29	5.13	4	320 LBS.
120/240	1	27	5.13	4	320 LBS.
120/208	3	22	5.13	5	320 LBS.
120/240	3	18	5.13	5	320 LBS.

MODEL: H490-6/18
ELECTRICAL SPECIFICATIONS
FIELD WIRING REQUIRED PER LOCAL CODE.

VOLUME	PHASE	AMPS	DISPLACEMENT	NO. WATTS	SHR. WT.
208	1	24.3	6.65	3	570 LBS.
240	1	24.3	6.65	3	570 LBS.
208	3	18.2	6.65	4	570 LBS.
240	3	14.7	6.65	4	570 LBS.

DRAINAGE & VENT SYSTEM
NOTE: THE PULLING ROUTE FOR THE DRAINAGE AND VENT SYSTEM IS TO BE DETERMINED BY THE USER.
1/2\"/>



NSF REFRIGERATED RACK COOK OVEN
119/80/112, 6 & 8 WATTS (NSA #1-19)

LOCKWOOD BREAD CABINET
24 3/8\"/>

DUKE BACK COUNTER
24 3/8\"/>

DUKE BACK COUNTER
24 3/8\"/>

DUKE BACK COUNTER
24 3/8\"/>

MICROWAVE OVEN
MODEL: MC-12316
FOR USE WITH DUKE REFRIGERATED BACK COUNTER
HOLDS 12 1/2\"/>

DUKE REFRIGERATED BACK BAR
34 1/4\"/>

DUKE BACK COUNTER
34 1/4\"/>

DUKE BACK COUNTER
34 1/4\"/>

DUKE BACK COUNTER
34 1/4\"/>

DUKE BACK COUNTER
34 1/4\"/>

DUKE BACK COUNTER
34 1/4\"/>

DUKE REFRIGERATED BACK BAR
34 1/4\"/>

DUKE BACK COUNTER
34 1/4\"/>

DUKE BACK COUNTER
34 1/4\"/>

DUKE BACK COUNTER
34 1/4\"/>

DUKE BACK COUNTER
34 1/4\"/>

DUKE BACK COUNTER
34 1/4\"/>

DUKE REFRIGERATED BACK BAR
34 1/4\"/>

DUKE BACK COUNTER
34 1/4\"/>

DUKE BACK COUNTER
34 1/4\"/>

DUKE BACK COUNTER
34 1/4\"/>

DUKE BACK COUNTER
34 1/4\"/>

DUKE BACK COUNTER
34 1/4\"/>

DUKE REFRIGERATED BACK BAR
34 1/4\"/>

DUKE BACK COUNTER
34 1/4\"/>

DUKE BACK COUNTER
34 1/4\"/>

DUKE BACK COUNTER
34 1/4\"/>

DUKE BACK COUNTER
34 1/4\"/>

DUKE BACK COUNTER
34 1/4\"/>

DUKE REFRIGERATED BACK BAR
34 1/4\"/>

DUKE BACK COUNTER
34 1/4\"/>

DUKE BACK COUNTER
34 1/4\"/>

DUKE BACK COUNTER
34 1/4\"/>

DUKE BACK COUNTER
34 1/4\"/>

DUKE BACK COUNTER
34 1/4\"/>

DUKE REFRIGERATED BACK BAR
34 1/4\"/>

DUKE BACK COUNTER
34 1/4\"/>

DUKE BACK COUNTER
34 1/4\"/>

DUKE BACK COUNTER
34 1/4\"/>

DUKE BACK COUNTER
34 1/4\"/>

DUKE BACK COUNTER
34 1/4\"/>

DUKE REFRIGERATED BACK BAR
34 1/4\"/>

DUKE BACK COUNTER
34 1/4\"/>

DUKE BACK COUNTER
34 1/4\"/>

DUKE BACK COUNTER
34 1/4\"/>

DUKE BACK COUNTER
34 1/4\"/>

DUKE BACK COUNTER
34 1/4\"/>

Subway Restaurant
Union Station Plaza
Portland, ME, 04101

NOTE: THESE DRAWINGS REPRESENT TYPICAL EQUIPMENT PURCHASED THROUGH DOCTOR'S ASSOCIATES INC. AND DOES NOT DEPEND ON ANY EQUIPMENT PURCHASED LOCALLY BY THE FRANCHISE/OWNER. OWNERS OF STORES OUTSIDE THE UNITED STATES AND CANADA MAY NEED ALTERATIVE ELECTRICAL REQUIREMENTS. CONTACT THE MANUFACTURER FOR THE MODIFIED ELECTRICAL SPECIFICATIONS.

WORLD HEADQUARTERS
225 B.C. DRIVE
(603) 877-4201
(800) 888-4444

TUSCANY BACK-UP SHEET
DRAWN BY: DAVIS & BREZEL
DATE: 1/20/01

NO.	DESCRIPTION	DATE	BY
1	NO SCALE		
2	NO SCALE		
3	NO SCALE		
4	NO SCALE		
5	NO SCALE		
6	NO SCALE		
7	NO SCALE		
8	NO SCALE		
9	NO SCALE		
10	NO SCALE		
11	NO SCALE		
12	NO SCALE		
13	NO SCALE		
14	NO SCALE		
15	NO SCALE		