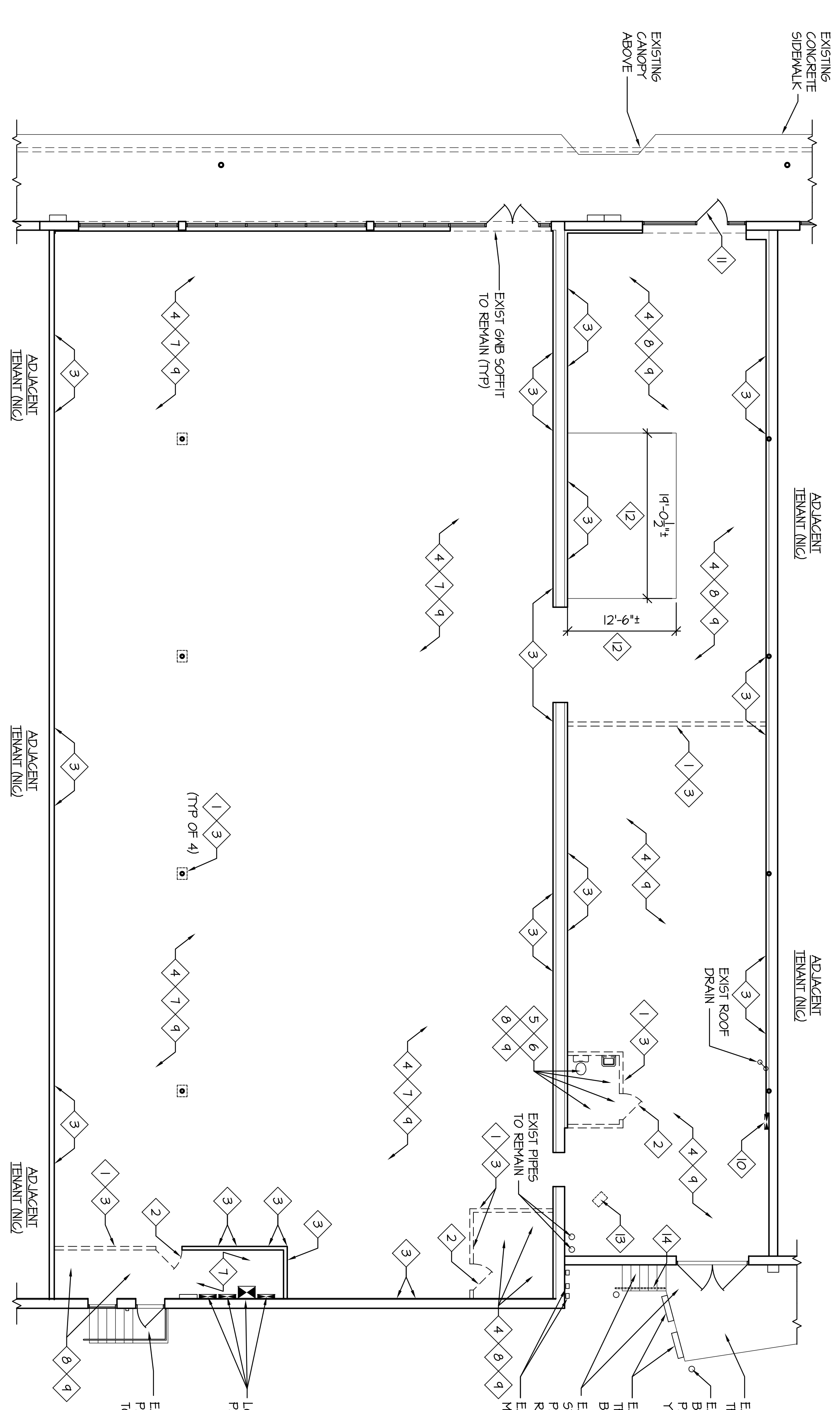


REFLECTED CEILING PLAN
SCALE: 1/8"=1'-0"

ADJACENT TENANT (N/C)



NORTH



DEMOLITION PLAN
SCALE: 1/8"=1'-0"

ADJACENT TENANT (N/C)



NORTH

REFLECTED CEILING LEGEND

2'-0" x 4'-0" ACOUSTICAL CEILING TILE AND GRID - SEE FINISH NOTE 4.	EMERGENCY LIGHTING WITH BATTERY PACK
GNB - PAINT WHITE UNLESS OTHERWISE NOTED.	EXIT LIGHT
8'-0" STRIP FLUORESCENT LIGHT FIXTURE WITH LAMPS ON NITE LIGHT CIRCUIT. SURFACE MOUNT TO GNB AND ACT CEILING. (SUSPEND @ 10'-0" AFF WITH NO FINISHED CEILING.)	DOME
8'-0" STRIP FLUORESCENT LIGHT FIXTURE WITH LAMPS ON NITE LIGHT CIRCUIT. SURFACE MOUNT TO GNB AND ACT CEILING. (SUSPEND @ 10'-0" AFF WITH NO FINISHED CEILING.)	VENTILATION FAN
8'-0" STRIP FLUORESCENT LIGHT FIXTURE WITH LAMPS ON NITE LIGHT CIRCUIT. SURFACE MOUNT TO GNB AND ACT CEILING. (SUSPEND @ 10'-0" AFF WITH NO FINISHED CEILING.)	CEILING HEIGHT ABOVE FINISH FLOOR
4'-0" STRIP FLUORESCENT LIGHT FIXTURE WITH LAMPS ON NITE LIGHT CIRCUIT. SURFACE MOUNT TO GNB AND ACT CEILING. (SUSPEND @ 10'-0" AFF WITH NO FINISHED CEILING.)	MIRROR PANEL
4'-0" STRIP FLUORESCENT LIGHT FIXTURE. SURFACE MOUNT TO ACT AND GNB CEILING. (SUSPEND @ 10'-0" AFF WITH NO FINISHED CEILING.)	DIFFUSER
	RETURN GRILLE
	POWER POLE
	SPRINKLER HEAD (SHOWN FOR INFORMATIONAL PURPOSES ONLY. SPRINKLER CONTRACTOR SHALL PREPARE DRAWINGS AS REQUIRED BY CODE FOR RELOCATION OR ADDITION OF HEADS.)

THE ELECTRICIAN SHALL INSTALL ADDITIONAL WIRE TIE SUPPORTS FROM THE CEILING GRID TO THE STRUCTURE ABOVE FOR SUPPORT OF THE LIGHT FIXTURES CLIPPED ON THE GRID.

DEMOLITION NOTES

- 1 REMOVE PARTITION COMPLETE.
- 2 REMOVE DOOR AND FRAME COMPLETE.
- 3 REMOVE EXISTING WALL FIXTURES AND FINISHES COMPLETE.
- 4 REMOVE EXISTING CARPET AND BASE COMPLETE.
- 5 REMOVE EXISTING VGT FLOORING AND BASE COMPLETE.
- 6 REMOVE EXISTING TOILET FIXTURES AND ACCESSORIES COMPLETE.
- 7 EXISTING ACT CEILING TO REMAIN. REMOVE DAMAGED OR DISCOLORED CEILING TILES.
- 8 REMOVE PORTION OF EXISTING ACT AND GRID COMPLETE.
- 9 REMOVE EXISTING LIGHT FIXTURES COMPLETE.
- 10 FOR REMOVAL AND RELOCATION OF EXISTING ELECTRICAL PANELS AND TRANSFORMER REFER TO ELECTRICAL DRAWINGS.
- 11 REMOVE EXISTING REARFALL BAR.
- 12 REMOVE EXISTING PLYWOOD FLOORING CONSTRUCTION COMPLETE.
- 13 REMOVE EXISTING UNIT HEATER COMPLETE.
- 14 REMOVE EXISTING GUARD RAIL COMPLETE.

LOCATION OF EXIST ELECTRICAL PANELS AND TRANSFORMER

EXIST CONCRETE STAIRS, PLATFORM, AND RAILING TO REMAIN