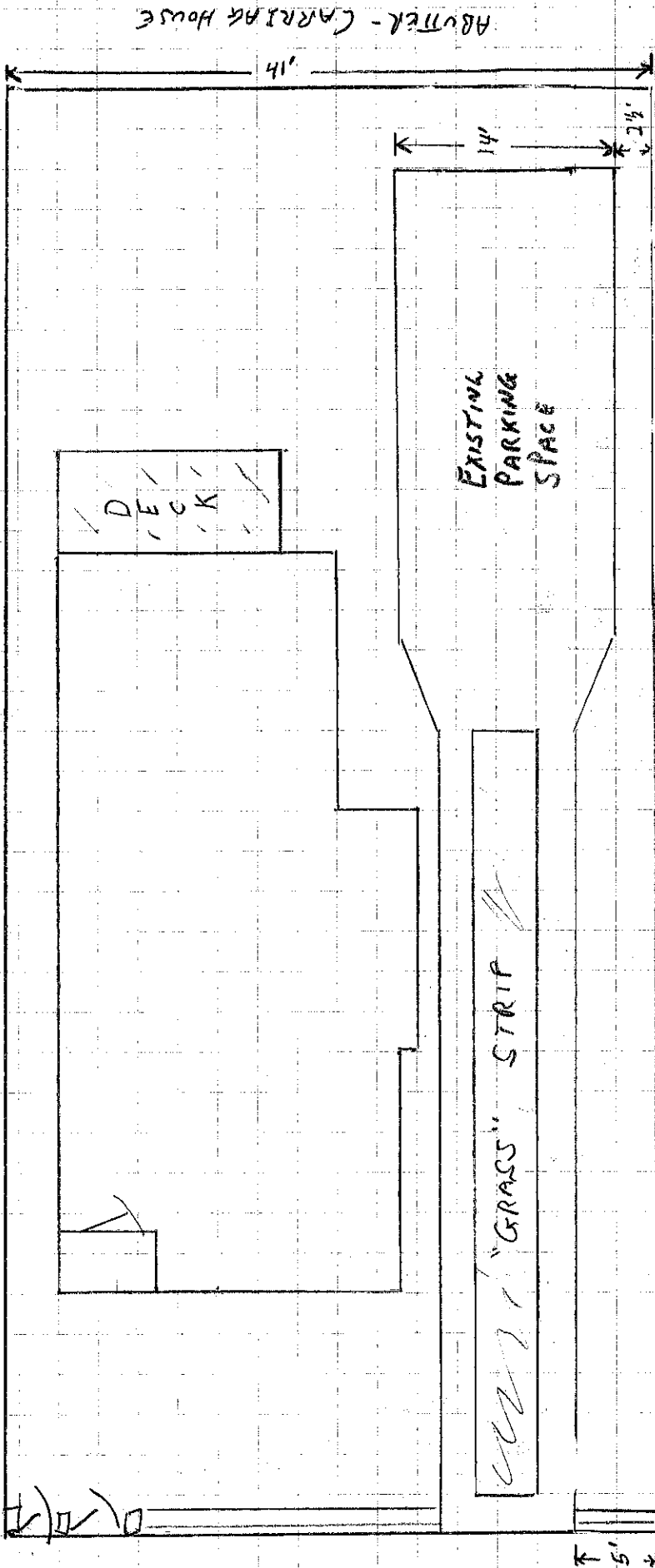
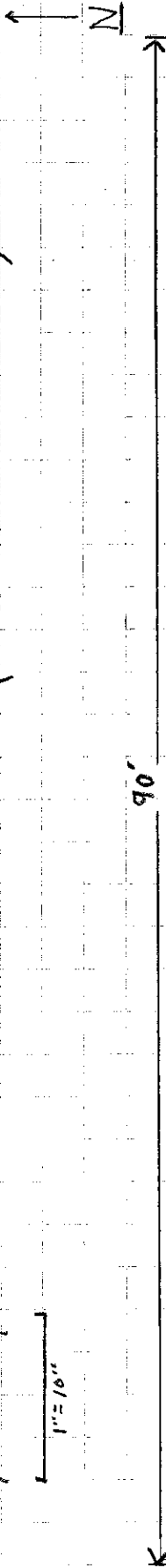


PAYSON
171 VAUGHAN ST
PORTLAND, ME
9/22/16
BY JEFF PAYSON

⊗ NARROWEST POINT 14'6"
BUILDING TO BOUNDARY LINE
(EXACT WIDTH OF DRIVE TBD)

1"=10'

VAUGHAN STREET



ABUTTER - CARRIAGE HOUSE

EXISTING
PARKING
SPACE

"GRASS" STRIP

30'

ABUTTER - EMH CONDO ASSN

5'