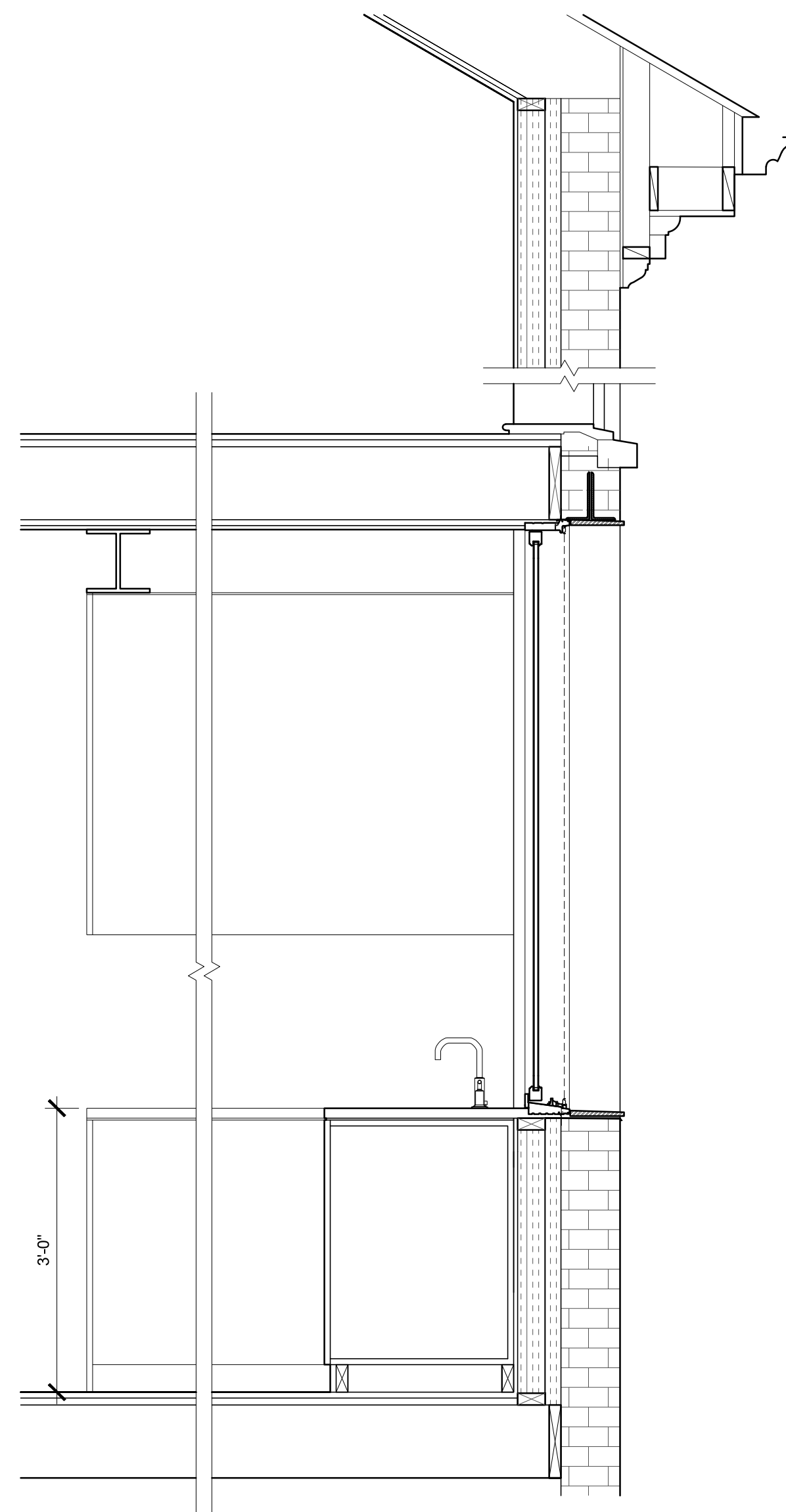


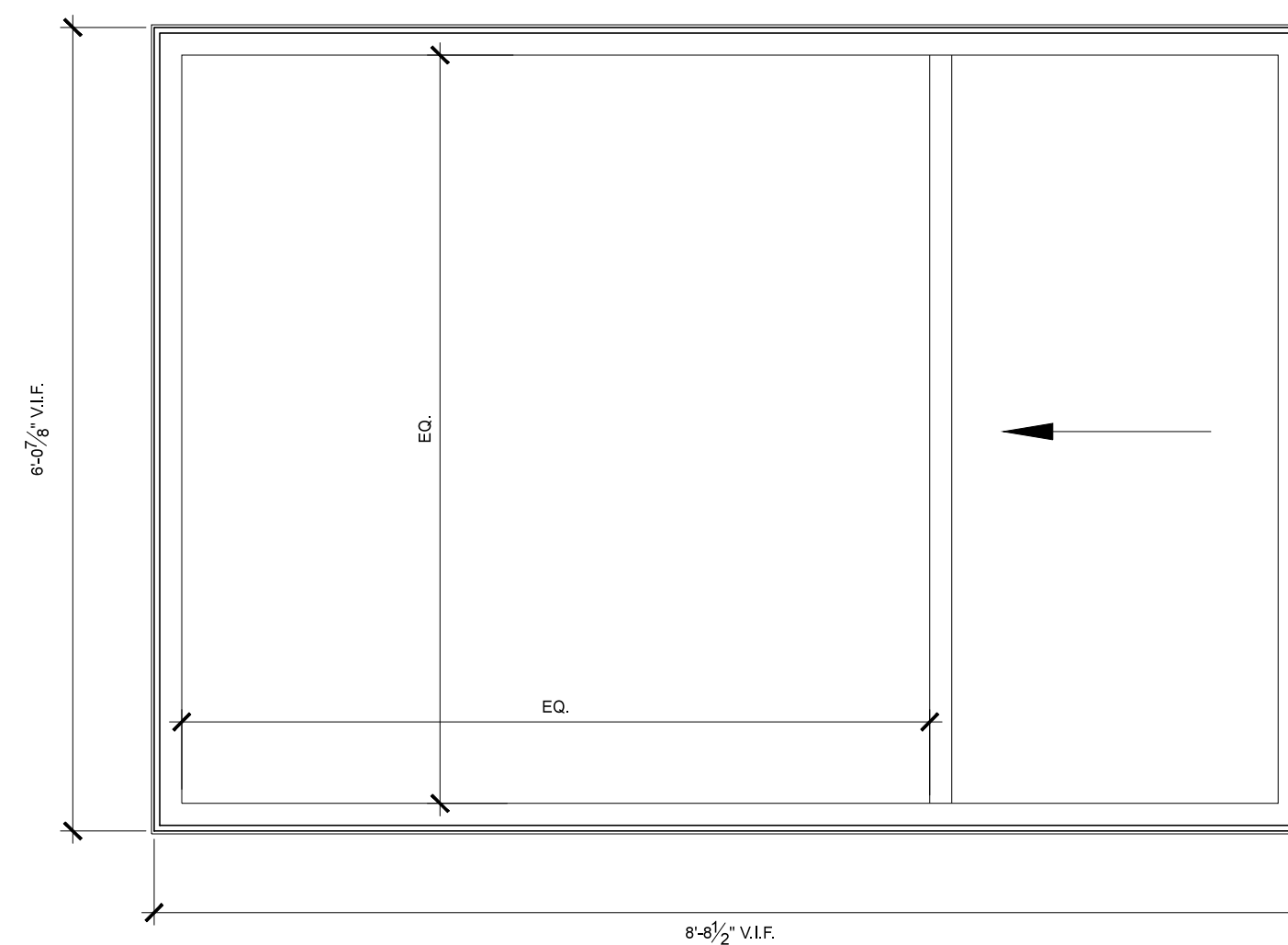
1 NORTH ELEVATION
SCALE: 1/4" = 1'-0"



3 WINDOW WALL SECTION
SCALE: 3/4" = 1'-0"

WINDOW SCHEDULE												
MARK	MANF.	MODEL	TYPE	FRAME SIZE			DETAILS			SCREEN	GLAZING	REMARKS
				WIDTH	HEIGHT	JAMB DEPTH	HEAD	JAMB	SILL			
1	MARVIN	ULTIMATE GLIDING	S/F	8'-8 1/2" V.L.F.	6'-7/8" V.L.F.		X/AXXX	X/AXXX	X/AXXX	N/A	INSULATED TRIPLE GLAZED	VERIFY DIMENSIONS IN FIELD PRIOR TO CONSTRUCTION TO ACHIEVE INTENDED DESIGN
2	VELUX	MATCH EXISTING	F SKYLIGHT	7'-0" V.L.F.	3'-0" V.L.F.		N/A	N/A	N/A	N/A	TEMPERED	VERIFY DIMENSIONS IN FIELD PRIOR TO CONSTRUCTION TO ACHIEVE INTENDED DESIGN
3	CUSTOM	INTERIOR	S	2'-8" V.L.F.	3'-6" V.L.F.		N/A	N/A	N/A	N/A	INSULATED DOUBLE GLAZED	MATCH EXISTING EXTERIOR WINDOW SIZE
TYPE KEY:				S-SLIDE	F-FIXED							

NOTE: ALL WINDOW SIZES ARE ROUGH OPENINGS



GENERAL WINDOW NOTES:
1. SEE WINDOW PACKAGE SPECIFICATIONS BELOW FOR MANUFACTURER INFORMATION.
2. ROUGH OPENING FOR ALL WINDOWS SHALL BE SIZED MINIMUM 1" LARGER THEN FRAME SIZE TO ALLOW FOR 3/8" SHIM AND FOAM AROUND UNIT.

WINDOW PACKAGE SPECIFICATIONS:

Windows - 08 50 00

Provide factory finish wood windows with the following specifications (Refer to building elevations and window schedule for sizing and additional information.):

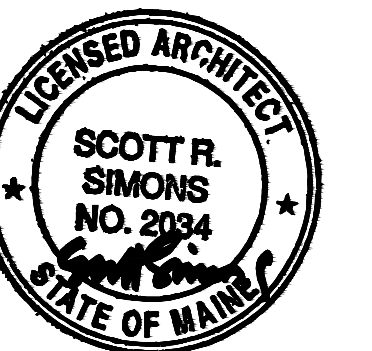
- Glazing: Triple-pane, Low-E argon filled insulated glass, tempered glass as noted on the window schedule and as required by codes
- Screens: Fixed screens for all operable windows.
- Hardware: Brushed stainless steel
- Casing: to be installed by general contractor in field.
- Submit manufacturer's shop drawings for review by the Architect before ordering windows.
- Provide samples of wood finish, aluminum finish and screen for architects approval before ordering windows.
- Marvin Windows: Ultimate Gliding Series
- Exterior: Aluminum Clad
- Interior: Finished Wood

PROJECT NAME:

PINE ST RESIDENCE

RENOVATIONS
157-159 PINE STREET
PORTLAND, ME 04101

SEAL:



THIS DRAWING IS THE PROPERTY OF SCOTT SIMONS ARCHITECTS (SSA) AND IS NOT TO BE COPIED OR REPRODUCED IN PART OR WHOLE 2015 © SCOTT SIMONS ARCHITECTS, LLC

REVISION:

1	DATE
2	DATE
3	DATE
4	DATE
5	DATE
6	DATE

DATE OF ISSUE: APRIL 17, 2015
PROJECT NUMBER: 2015-0010
STATUS: PERMIT SET

ELEVATIONS AND WINDOW DETAILS

A201