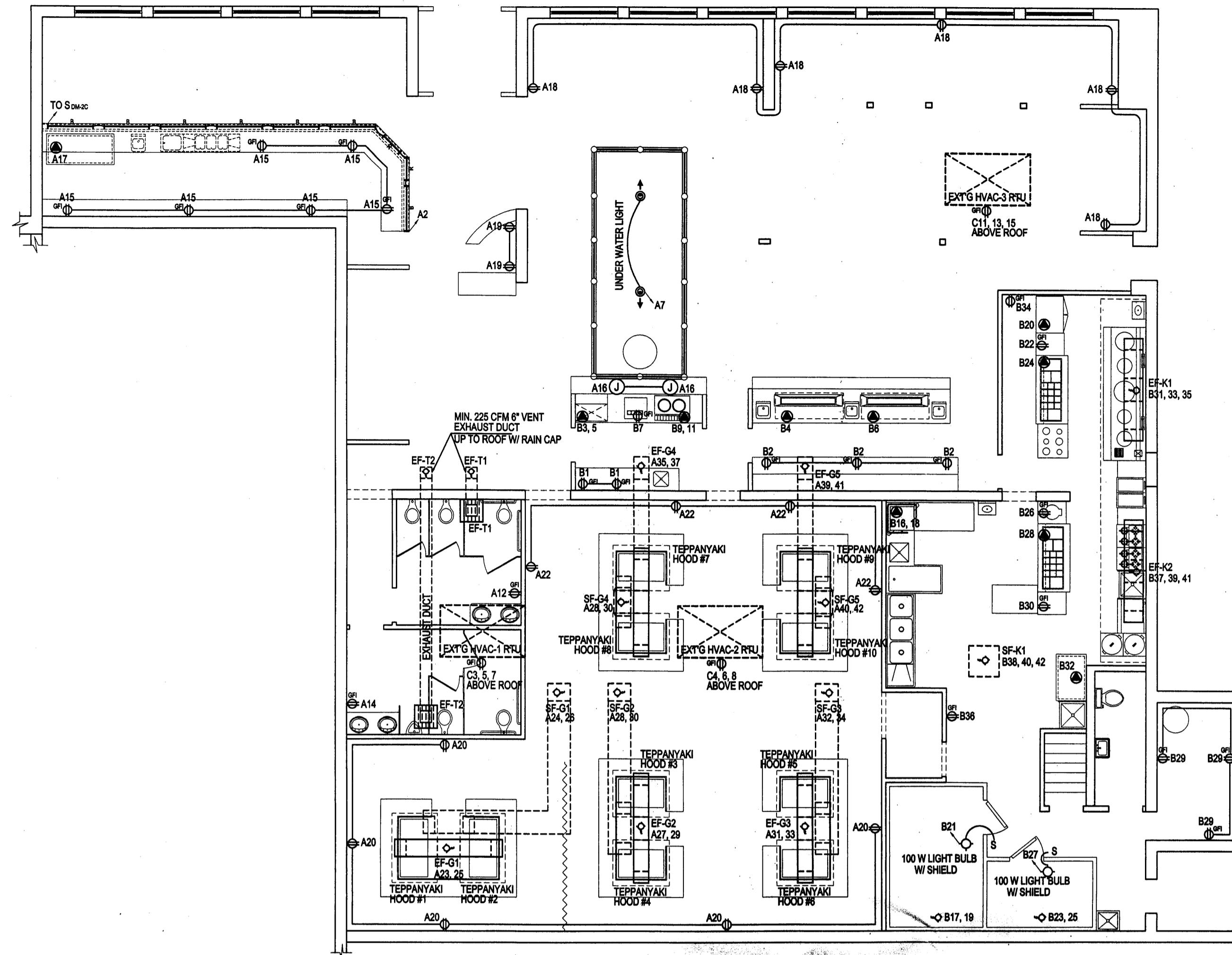


CEILING - ELECTRICAL PLAN 1/8"=1'-0"



ELECTRICAL PLAN 1/8"=1'-0"

PANEL "A" 200 AMP. 120/208V 3Ø 4W

VA	TRIP	WIRE	DESCRIPTION	C	C	DESCRIPTION	WIRE	TRIP	VA
840	20/1	12	BAR AREA CEILING LIGHTING	1	2	BAR / VESTIBULE AREA LIGHTING	12	20/1	1030
1200	20/1	12	LOUNGE AREA LIGHTING	3	4	SUSHI AREA / WATER AREA LIGHTING	12	20/1	1050
525	20/1	12	DINING AREA LIGHTING	5	6	TEPPANYAKI AREA LIGHTING	12	20/1	525
800	20/1	12	DINING AREA LIGHTING	7	8	TEPPANYAKI AREA LIGHTING	12	20/1	1050
800	20/1	12	DINING AREA LIGHTING	9	10	TEPPANYAKI AREA LIGHTING	12	20/1	1050
1500	20/1	12	FRONT SIGN OUTLET	11	12	WOMEN'S ROOM LIGHT & FAN, GFI REC.	12	20/1	1500
1500	20/1	12	NEON SIGN OUTLET	13	14	MEN'S ROOM LIGHT & FAN, GFI REC.	12	20/1	1500
1000	20/1	12	BAR AREA REC.	15	16	POOL SIDE BUDHA LIGHT REC.	12	20/1	1500
1000	20/1	12	LOW BOY (UNDER BAR COUNTER)	17	18	LOUNGE AREA REC.	12	20/1	1000
1000	20/1	12	CASHER OUTLET	19	20	TEPPANYAKI AREA REC.	12	20/1	1000
1200	20/1	12	TEPPANYAKI AREA TRACK LIGHT	21	22	TEPPANYAKI AREA REC.	12	20/1	1000
2500	20/2	12	TEPPANYAKI EXHAUST FAN (EF-51)	23	24	TEPPANYAKI MAKEUP FAN (SF-G1)	12	20/2	2500
2500	20/2	12	TEPPANYAKI EXHAUST FAN (EF-52)	25	26	TEPPANYAKI MAKEUP FAN (SF-G2)	12	20/2	2500
2500	20/2	12	TEPPANYAKI EXHAUST FAN (EF-53)	27	28	TEPPANYAKI MAKEUP FAN (SF-G3)	12	20/2	2500
2500	20/2	12	TEPPANYAKI EXHAUST FAN (EF-54)	29	30	TEPPANYAKI MAKEUP FAN (SF-G4)	12	20/2	2500
2500	20/2	12	TEPPANYAKI EXHAUST FAN (EF-55)	31	32	TEPPANYAKI MAKEUP FAN (SF-G5)	12	20/2	2500
2500	20/2	12	TEPPANYAKI EXHAUST FAN (EF-56)	33	34	TEPPANYAKI MAKEUP FAN (SF-G6)	12	20/2	2500
2500	20/2	12	TEPPANYAKI EXHAUST FAN (EF-57)	35	36	TEPPANYAKI MAKEUP FAN (SF-G7)	12	20/2	2500
2500	20/2	12	TEPPANYAKI EXHAUST FAN (EF-58)	37	38	TEPPANYAKI MAKEUP FAN (SF-G8)	12	20/2	2500
2500	20/2	12	TEPPANYAKI EXHAUST FAN (EF-59)	39	40	TEPPANYAKI MAKEUP FAN (SF-G9)	12	20/2	2500
411	42								
24,085			TOTAL LOAD = 48,770 W = 135.38 A @ 208V / 3Ø 4W						24,705

PANEL "B" 200 AMP. 120/208V 3Ø 4W

VA	TRIP	WIRE	DESCRIPTION	C	C	DESCRIPTION	WIRE	TRIP	VA
1000	20/1	12	REC. IN WATER STATION	1	2	SUSHI AREA REC.	12	20/1	1000
3170	30/2	10	ICE MAKER	3	4	LOW BOY (UNDER SUSHI CASE)	12	20/1	1000
18600	85/3	4	EXT'G HVAC-1 (10 TONS)	5	6	LOW BOY (UNDER SUSHI CASE)	12	20/1	1000
1000	20/1	12	SODA DISP.	7	8	KITCHEN LIGHTING	12	20/1	300
5300	40/2	8	(COFFEE & TEA URN)	9	10	KITCHEN LIGHTING	12	20/1	960
1000	20/1	12	CHOW'S ROOM LIGHT & FAN, GFI REC.	11	12	KITCHEN LIGHTING	12	20/1	875
1000	20/1	12	CHOW'S ROOM LIGHT & FAN, GFI REC.	13	14	KITCHEN HOOD LIGHT	12	20/1	1000
2770	30/2	10	TWALK-IN COOLER ACCU	15	16	TOWEL WASH	10	30/2	3170
500	20/1	12	COOLER LIGHTING / HEATERS	17	18	REFRIGERATOR	12	20/1	1000
2770	30/2	10	TWALK-IN FREEZER ACCU	19	20	WORK TABLE OUTLET	12	20/1	1000
500	20/1	12	FREEZER LIGHTING / HEATERS	21	22	BAIN MARIE	12	20/1	1200
1000	20/1	12	STORAGE AREA REC.	23	24	BAIN MARIE	12	20/1	1000
2500	30/3	10	EXHAUST FAN (EF-K1)	25	26	ICE MAKER	12	20/1	1000
2500	30/3	10	EXHAUST FAN (EF-K2)	27	28	BAIN MARIE	12	20/1	1200
2500	30/3	10	EXHAUST FAN (EF-K3)	29	30	WORK TABLE OUTLET	12	20/1	1000
2500	30/3	10	EXHAUST FAN (EF-K4)	31	32	LOW BOY	12	20/1	1000
2500	30/3	10	EXHAUST FAN (EF-K5)	33	34	KITCHEN AREA REC.	12	20/1	1000
2500	30/3	10	EXHAUST FAN (EF-K6)	35	36	KITCHEN AREA REC.	12	20/1	1000
2500	30/3	10	EXHAUST FAN (EF-K7)	37	38	KITCHEN AREA REC.	12	20/1	1000
2500	30/3	10	EXHAUST FAN (EF-K8)	39	40	MAKE-UP FAN (SF-K1)	10	30/3	5000
411	42								
24,019			TOTAL LOAD = 47,735 W = 132.50 A @ 208V / 3Ø 4W						23,725

PANEL "C" 200 AMP. 120/208V 3Ø 4W

VA	TRIP	WIRE	DESCRIPTION	C	C	DESCRIPTION	WIRE	TRIP	VA
1000	20/1	12	HVAC RTU GFI REC.	1	2	HVAC RTU GFI REC.	12	20/1	1000
18600	85/3	4	EXT'G HVAC-1 (10 TONS)	3	4	EXT'G HVAC-2 (10 TONS)	4	85/3	18600
1000	20/1	12	HVAC RTU GFI REC.	5	6	SPARE	---	---	---
18600	85/3	4	EXT'G HVAC-3 (10 TONS)	7	8	SPARE	---	---	---
---	---	---	SPARE	9	10	SPARE	---	---	---
---	---	---	SPARE	11	12	SPARE	---	---	---
---	---	---	SPARE	13	14	SPARE	---	---	---
---	---	---	SPARE	15	16	SPARE	---	---	---
---	---	---	SPARE	17	18	SPARE	---	---	---
---	---	---	SPARE	19	20	SPARE	---	---	---
---	---	---	SPARE	21	22	SPARE	---	---	---
---	---	---	SPARE	23	24	SPARE	---	---	---
---	---	---	SPARE	25	26	SPARE	---	---	---
---	---	---	SPARE	27	28	SPARE	---	---	---
---	---	---	SPARE	29	30	SPARE	---	---	---
---	---	---	SPARE	31	32	SPARE	---	---	---
---	---	---	SPARE	33	34	SPARE	---	---	---
---	---	---	SPARE	35	36	SPARE	---	---	---
---	---	---	SPARE	37	38	SPARE	---	---	---
---	---	---	SPARE	39	40	SPARE	---	---	---
---	---	---	SPARE	41	42	SPARE	---	---	---
41,200			TOTAL LOAD = 61,800 W = 171.54 A @ 208V / 3Ø 4W						20,600

TOTAL LOAD: 158,305 W
= 439.32 AMPS. @ 208V. / 3Ø 4W
AMPACITY OF STORE: 600 AMPERES

CONDUCTOR AMPACITY
NEC - TABLE 310-16

SIZE	ALLOWABLE AMPACITY OF INSULATED COPPER CONDUCTOR
AWG	THW
18	18
16	15
14	20
12	30
10	40
8	55
6	75
4	100
3	125
2	150
1	200
0	250

LEGEND

S	SWITCH	□	DISCONNECT SWITCH	⊞	RECESSED CHANDELIER (100 WATT EACH)
Sw	DIMMER	■	PENDENT LIGHT (75 WATT EACH)	○	WALL LIGHT (75 WATT EACH)
—	4' 1-LAMP FLUORESCENT IN SOFFIT ABOVE CANOPY, RAPID START W/ 1/2"x1/2" SPECULAR SILVER PARAHX LENS LITHONIA #C-140 (40 W), PROVIDE LENS TO MATCH OPENING.	■	PENDENT LIGHT W/ LANTERN (75 WATT EACH)	○	JUNCTION BOX
—	4' 1-LAMP FLUORESCENT UNDERNEATH BAR COUNTER, RAPID START W/ 1/2"x1/2" SPECULAR SILVER PARAHX LENS LITHONIA #C-140 (40 W), PROVIDE LENS TO MATCH OPENING.	○	PENDENT LIGHT W/ LAMP SHADE (100 WATT EACH)	⊞	MOTOR AND DISCONNECT SWITCH
—	2' 1-LAMP FLUORESCENT UNDERNEATH BAR COUNTER, RAPID START W/ 1/2"x1/2" SPECULAR SILVER PARAHX LENS LITHONIA #C-120 (25 W), PROVIDE LENS TO MATCH OPENING.	⊞	GROUND MOUNTED ADJUSTABLE WEATHER PROOF FLOOD LIGHT W/ 75W PAR 30 HALOGEN FLOOD LAMP	⊞	BATHROOM EXHAUST FAN VENT TO ROOF WITH RAIN CAP
—	TRACK LIGHT (30 ~ 75 WATT EACH)	⊞	2'x4' RECESSED 4-TUBE FLUORESCENT	⊞	COMBINATION FAN/LIGHT UNIT 1-100W LAMP, 80 CFM EXHAUST TO WALL OR ROOF MTD CEILING RECESSED.

- ELECTRICAL NOTES & REQUIREMENTS**
- ALL WIRING TO COMPLY WITH N.E.C. 1999.
 - MINIMUM CIRCUIT TO BE 20 AMP. BREAKER, (2) #12 IN 3/4" CONDUIT (+GND) UNLESS SHOWN OTHERWISE.
 - WIRE SIZES BASED ON THW COPPER, A.W.G.
 - PROVIDE DISCONNECTING MEANS AT ALL MOTOR LOADS.
 - VERIFY ALL REQUIREMENTS FOR KITCHEN EQUIPMENT WITH EQUIPMENT SUPPLIER.
 - MAKE ALL FINAL CONNECTIONS.
 - MOUNT ALL ELECTRICAL DEVICES AND SWITCHES AS REQUIRED BY THE ADA AND THE LOCAL STATE BARRIER FREE RULES.
 - FUSE ALL MOTORS AND MOTOR ASSEMBLIES IN ACCORDANCE WITH THE N.E.C. 1990 AND MANUFACTURER'S RECOMMENDATIONS.
 - BALANCE THE LOADS EVENLY BETWEEN THE PHASES OF THE SYSTEM. MINIMUM UNBALANCE OF 3%.
 - MAINTAIN A MAXIMUM VOLTAGE DROP OF 5% THROUGHOUT THE ENTIRE SYSTEM.
 - COORDINATE ALL WORK WITH ARCHITECTURAL, MECHANICAL, AND PLUMBING TRADES IN FIELD.
 - VERIFY ALL EXISTING JOB CONDITIONS AND ACCOMMODATE AS REQUIRED FOR A COMPLETE INSTALLATION.
 - ELECTRICAL PANEL SHALL BE ENCLOSED INTO THE WALL.

