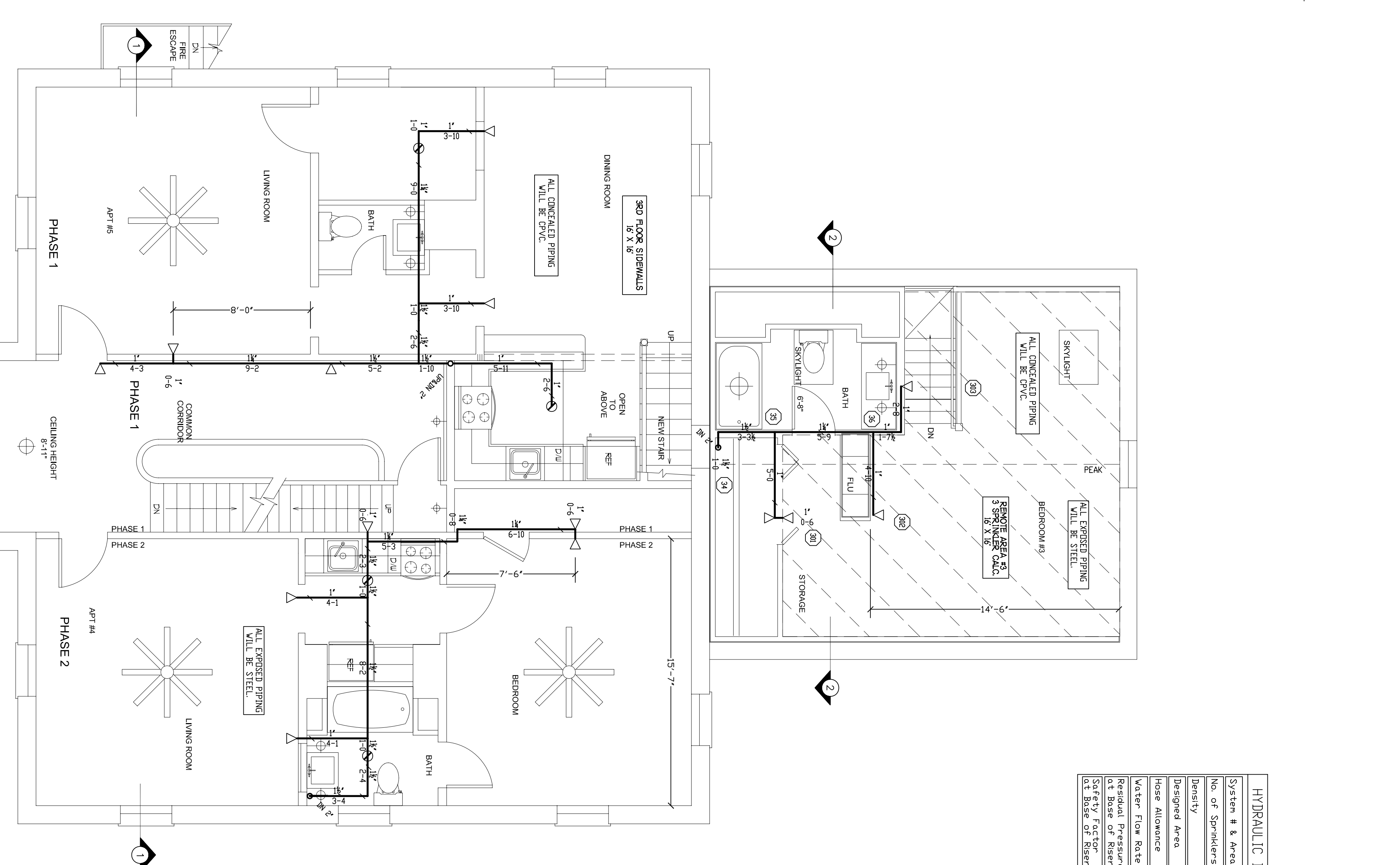
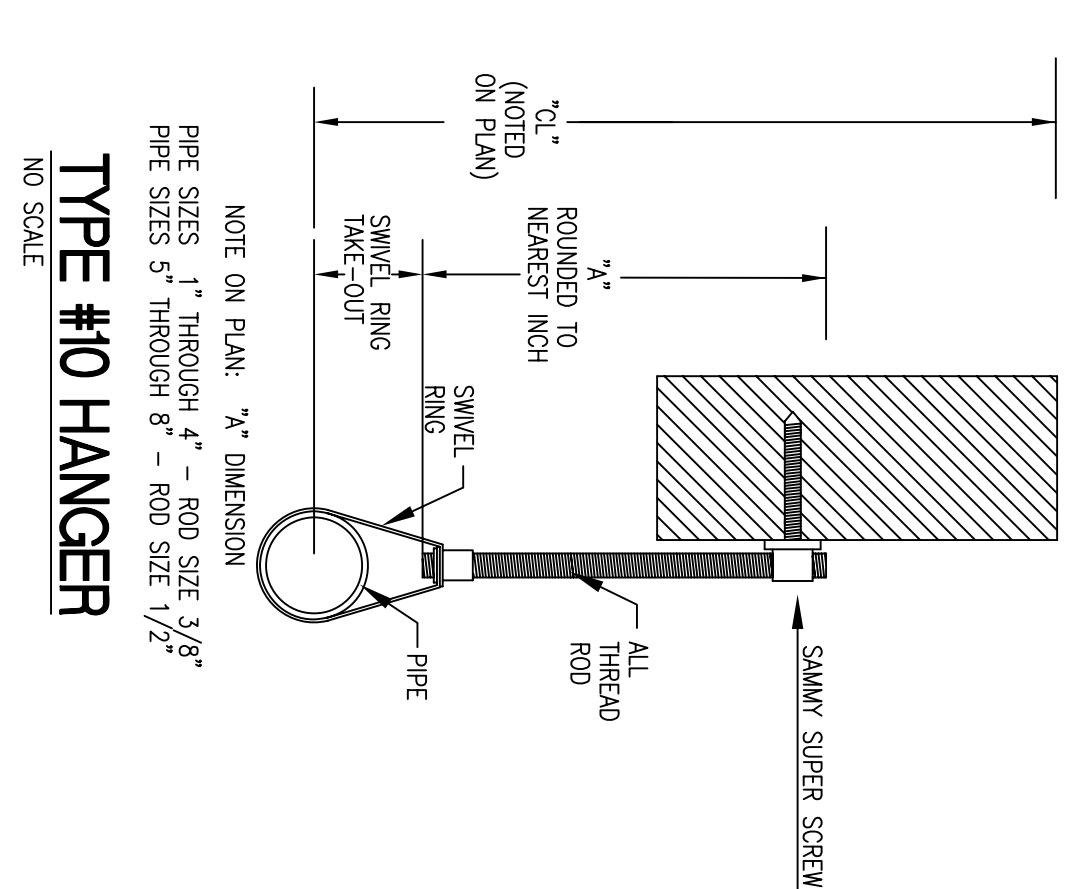
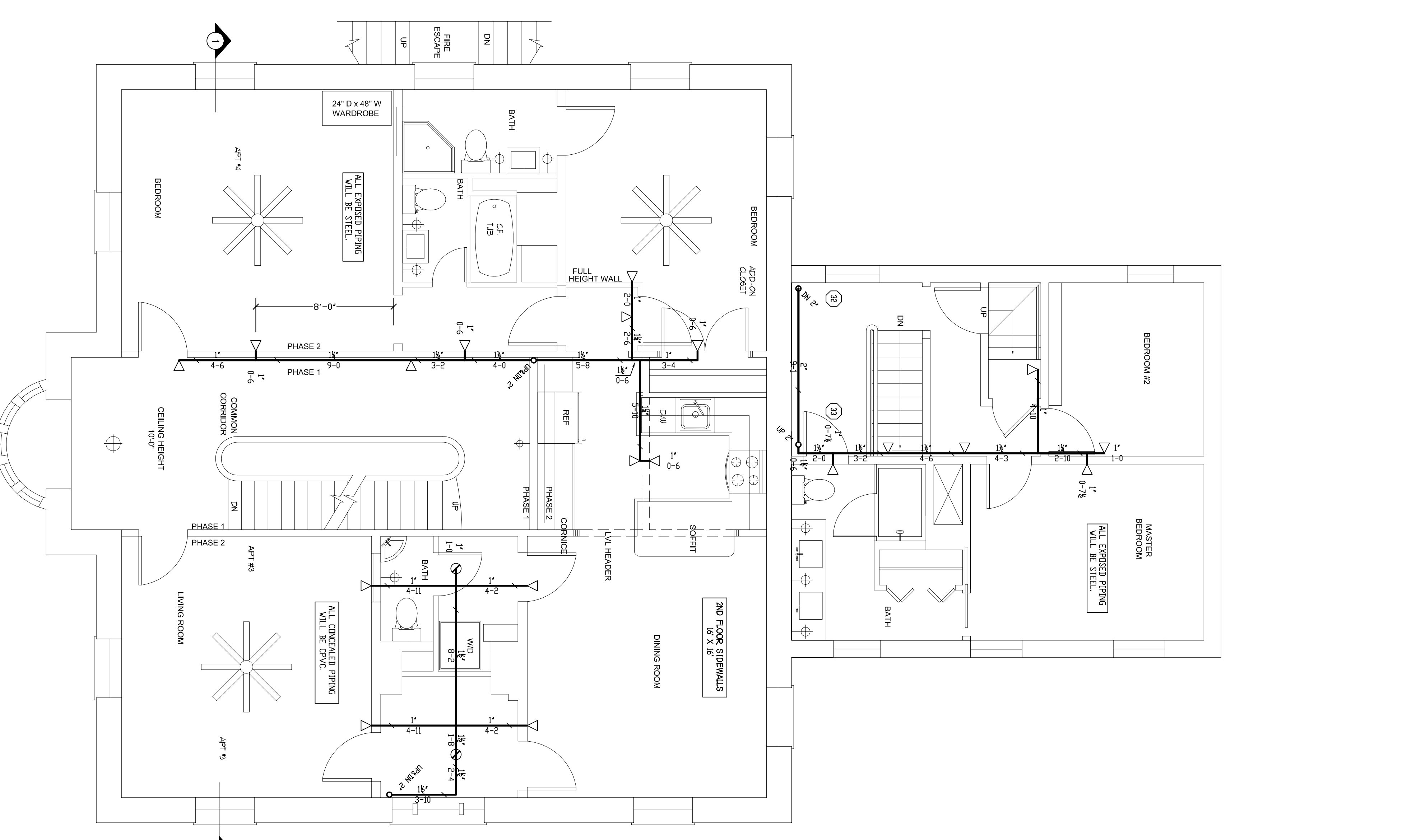


| | |
|-----------------------------------|----------|
| System # & Area | #1 - #3 |
| No. of Sprinklers | 3 |
| Density | 0.05 GPM |
| Design Area | 4000 |
| hose Allowance | N/A GPM |
| Water Flow Rate | 48 GPM |
| Residual Pressure at Base of Rise | 41 PSI |
| Static Pressure at Base of Rise | 5.97 PSI |



SECOND FLOOR FIRE PROTECTION

SCALE 1/8"=1'-0"
 QUANTITY 19
 QUANTITY 2

THIRD FLOOR FIRE PROTECTION

SCALE 1/8"=1'-0"
 QUANTITY 14
 QUANTITY 5

| REVISIONS | | NOTES | |
|-----------|--|-------|--|
| | | | |
| | | | |

| SPRINKLER TYPE | IDENTIFICATION NO. | MFG. | ESC. | MODEL | FINISH | ORIFICE | TEMP. | SYMBOL | QUANT. |
|---------------------------|--------------------|------|-------|-------|--------|---------|-------|--------|--------|
| QUICK RESP. SIDEWALL K-44 | TY2324 | TYCO | 2 PCE | LTI | WHITE | 1/2" | 155° | | 33 |
| QUICK RESP. PENDANT K-4.9 | TY2324 | TYCO | N/A | LTI | BKASS | 1/2" | 155° | | 7 |

| HEAD COUNT | |
|-----------------|----|
| SPRINKLER HEADS | 40 |

| STANDARD SYMBOLS | STANDARD SYMBOLS |
|--|--|
| <ul style="list-style-type: none"> POST INDICATOR VALVE KEY VALVE FIRE HYDRANT FIRE DEPT. CONNECTION O.S. & Y GATE VALVE SWING CHECK VALVE NEW UNDERGROUND EXIST UNDERGROUND | <ul style="list-style-type: none"> ALARM CHECK VALVE RSBR W/ALARM VALVE RSBR W/DRY VALVE RSBR W/ELEC. FLOW SWITCH RSBR W/RELUC. VALVE WATER MOTOR BELL ELECTRIC BELL FRESH FIRE DEPT. CONNECTION |

| INSPECTIONS | |
|-------------|--|
| 1. | |
| 2. | |
| 3. | |
| 4. | |

191 PINE STREET
 PORTLAND, MAINE 04103
 FIRE PROTECTION PLAN
 FREEDOM FIRE PROTECTION, INC.
 209 QUAKER RIDGE ROAD
 CASCO, MAINE 04015

| | |
|-----------|----------|
| JOB No. | MO087 |
| DATE | 9/7/12 |
| DRAWN BY | MAN |
| SCALE | AS NOTED |
| SHEET No. | FP-3015 |