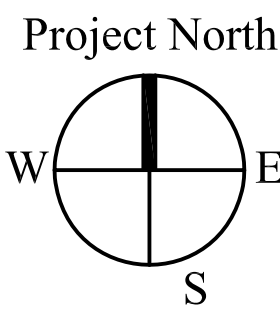
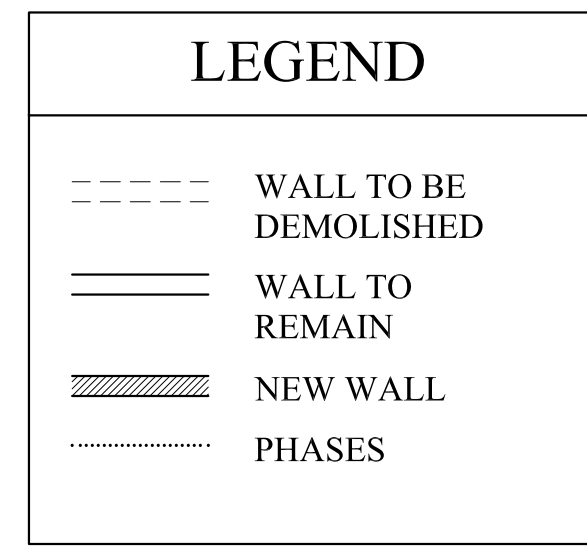
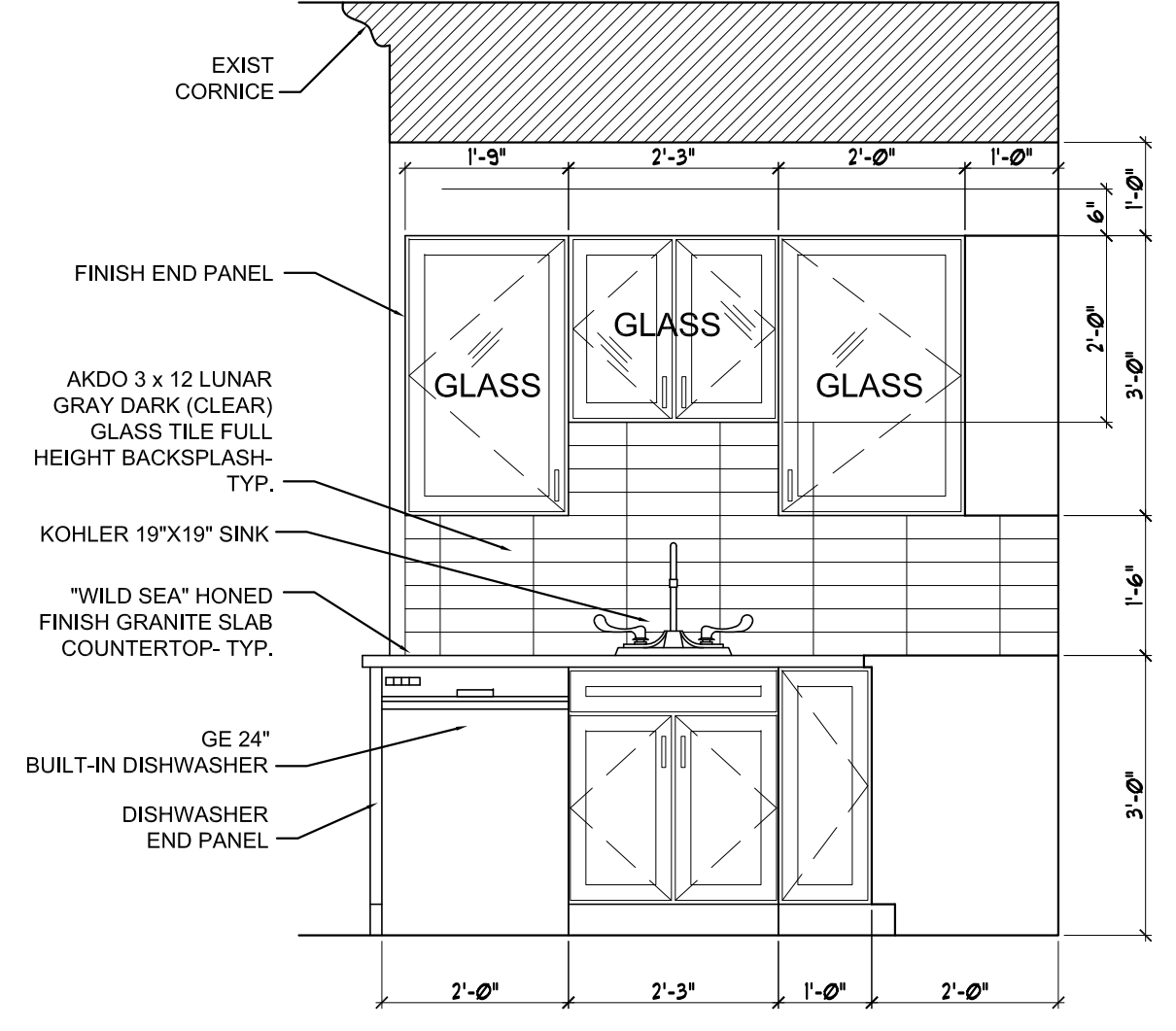


NOTE:
ALL CONDITIONS EXISTING
UNLESS NOTED

1 SECOND FLOOR PLAN
SCALE: 1/4"=1'-0"

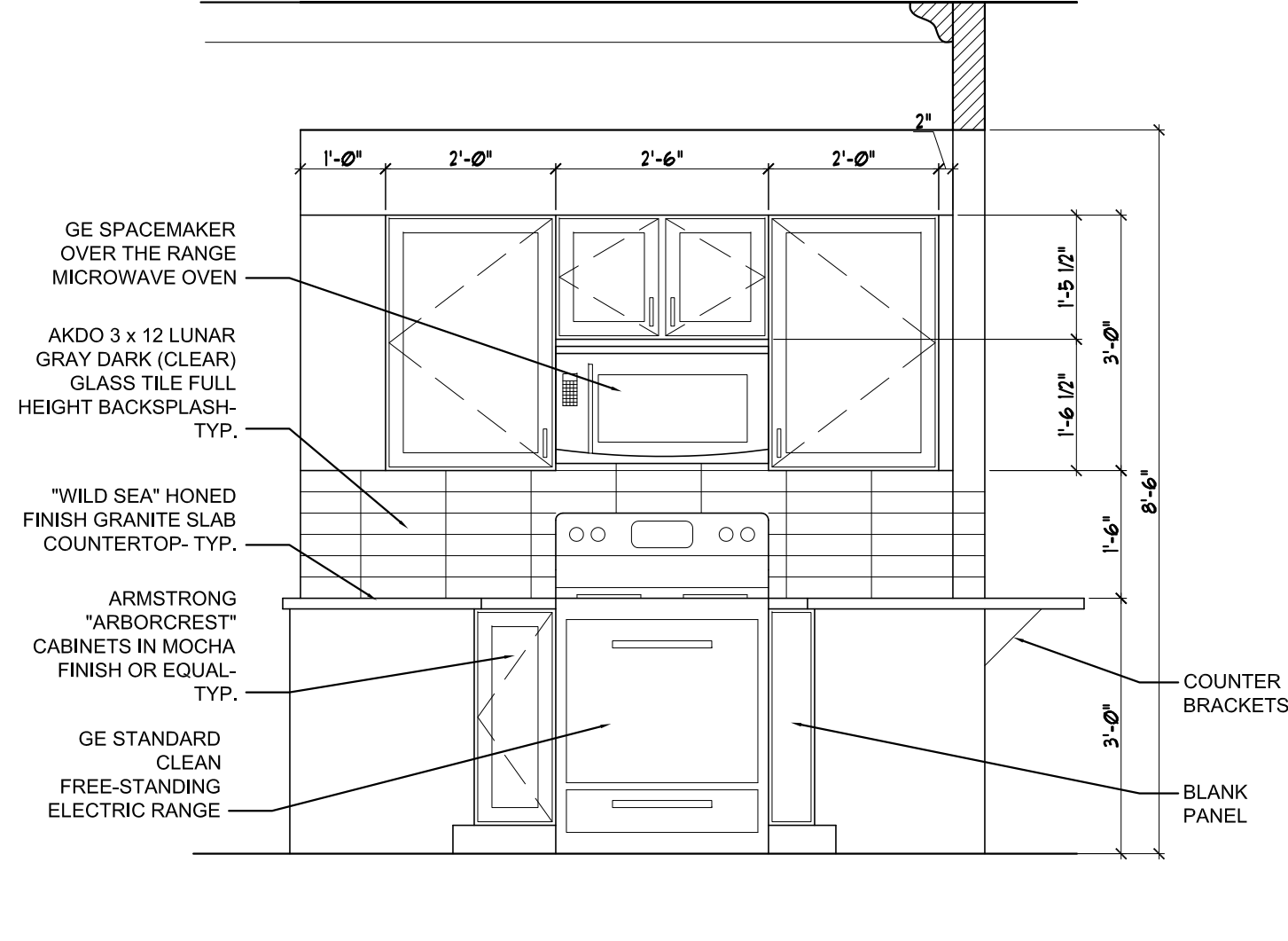


NOTE:
WALL CABINETS ARE 12" DEEP AND BASE CABINETS
ARE 24" DEEP

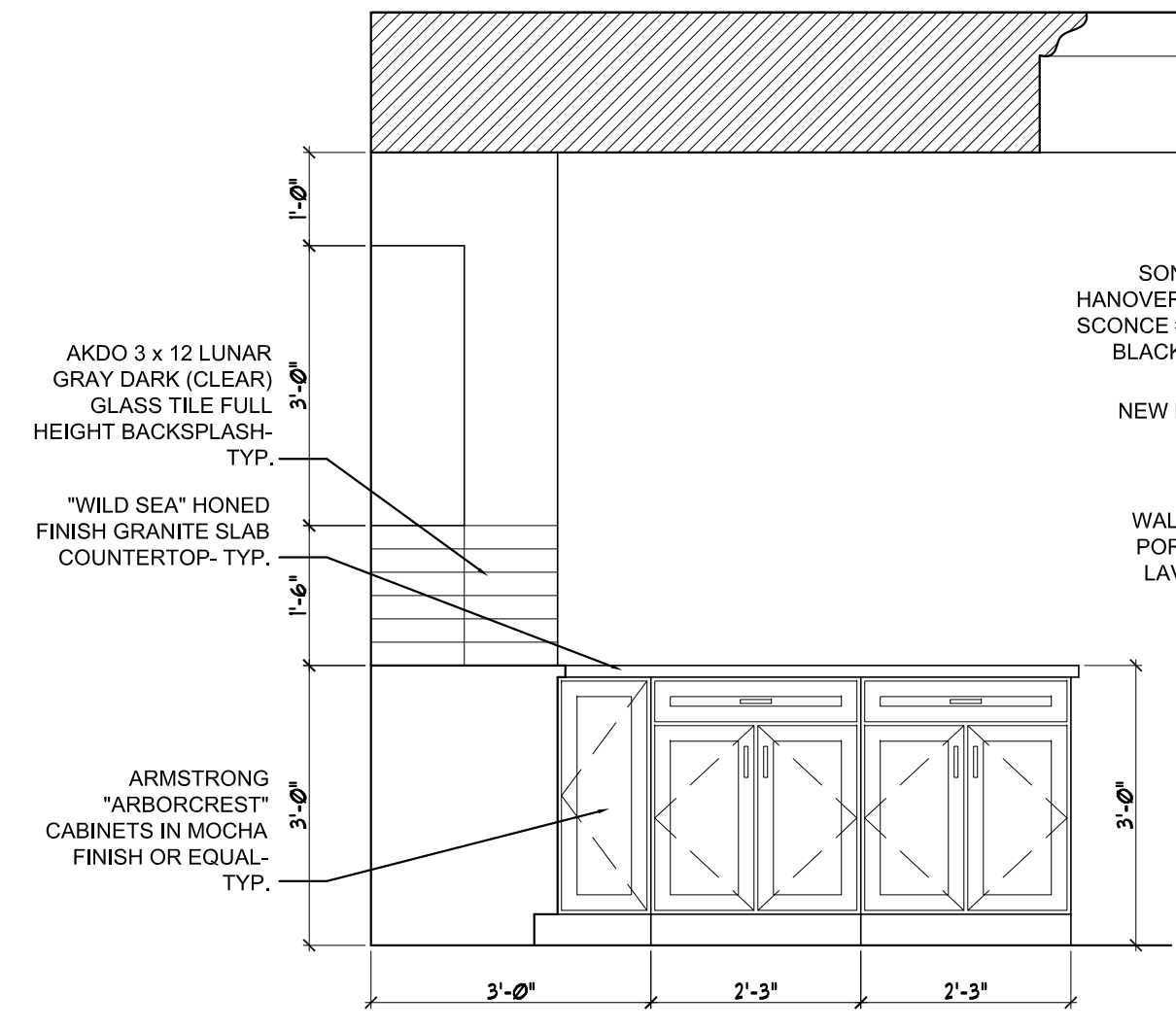


A UNIT #3 KITCHEN ELEVATION
1/2"=1'-0"

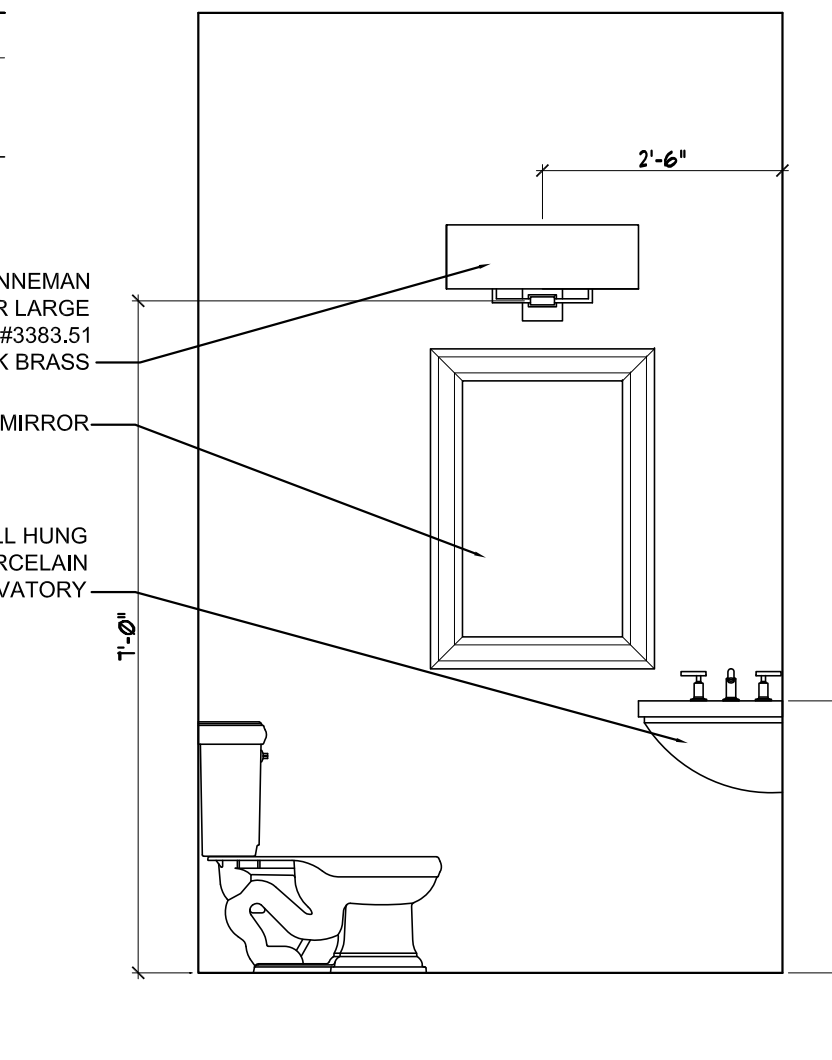
NOTE:
WALL CABINETS ARE 12" DEEP AND BASE
CABINETS ARE 24" DEEP



B UNIT #3 KITCHEN ELEVATION
1/2"=1'-0"

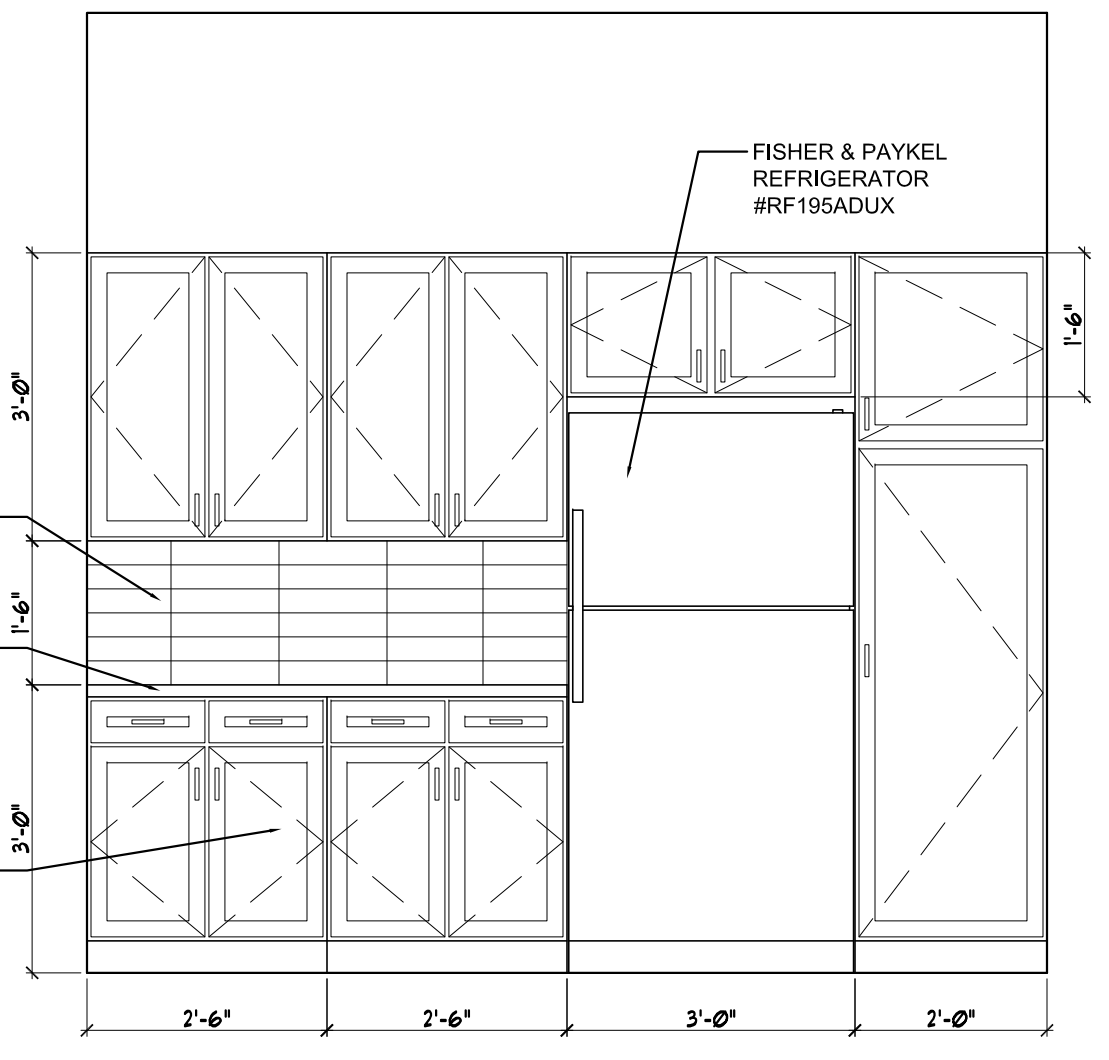


C UNIT #3 KITCHEN ELEVATION
1/2"=1'-0"

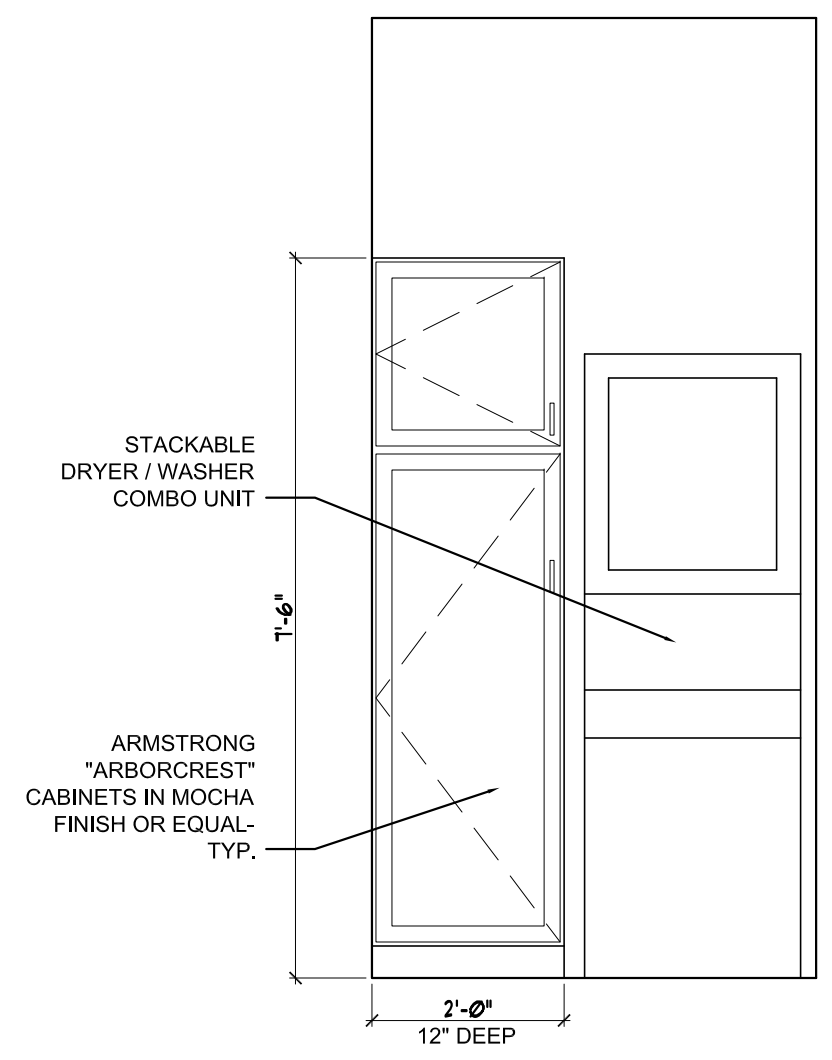


D UNIT #3 BATH 3A VANITY ELEVATION
1/2"=1'-0"

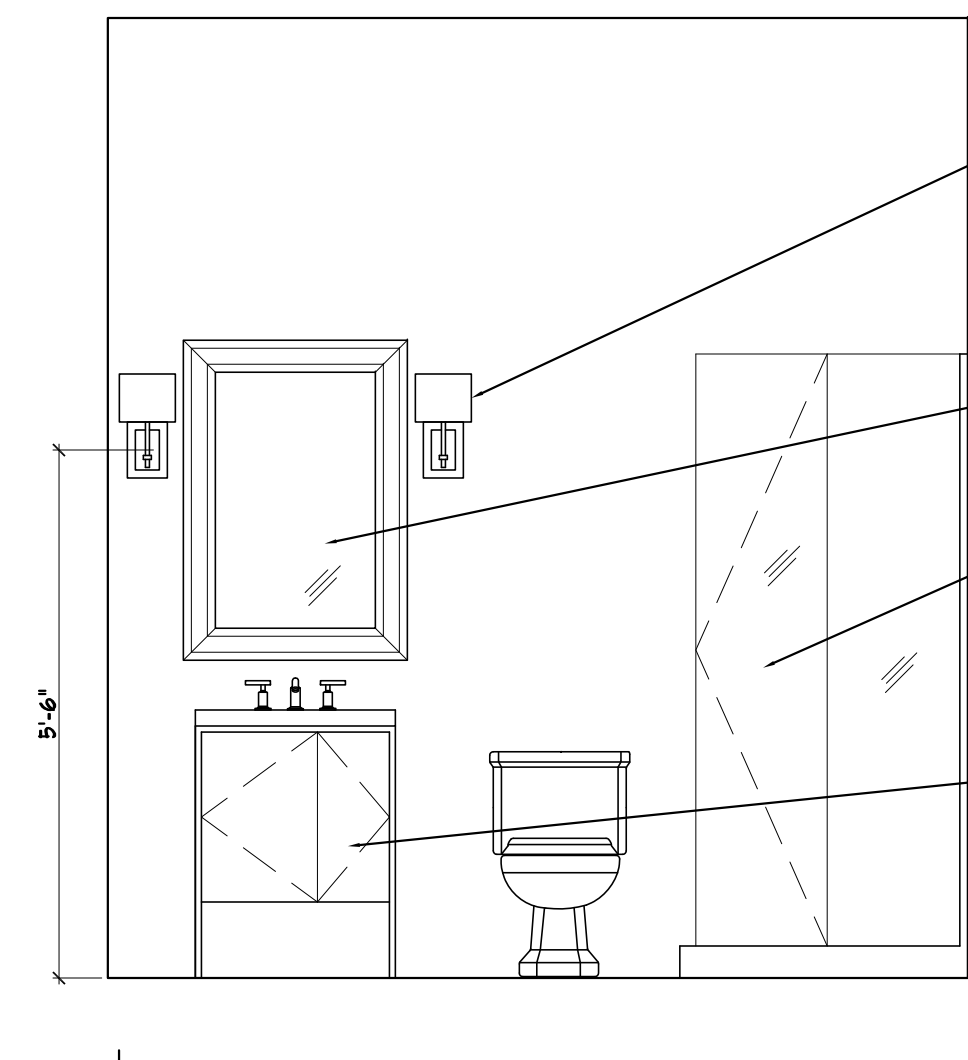
NOTE:
WALL CABINETS ARE 12" DEEP AND BASE
CABINETS ARE 24" DEEP



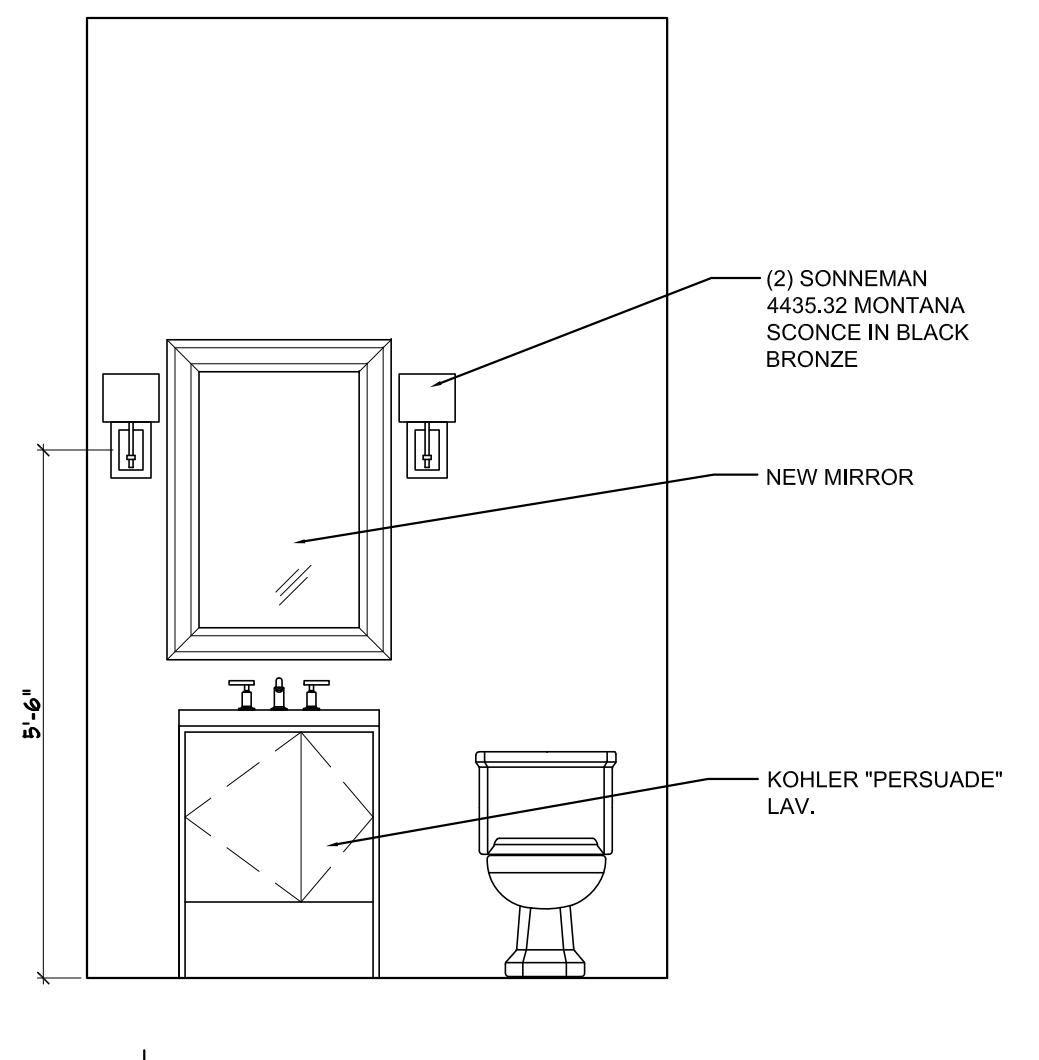
E UNIT #3 KITCHEN ELEVATION
1/2"=1'-0"



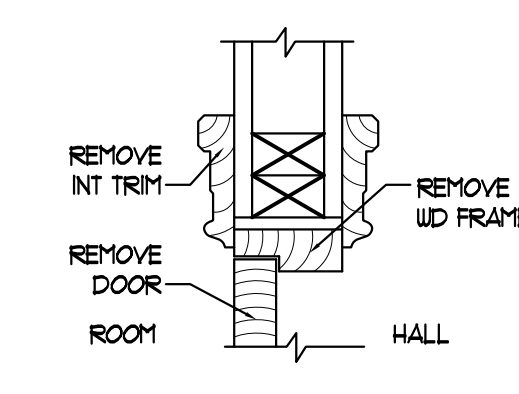
F UNIT #3 LAUNDRY ELEVATION
1/2"=1'-0"



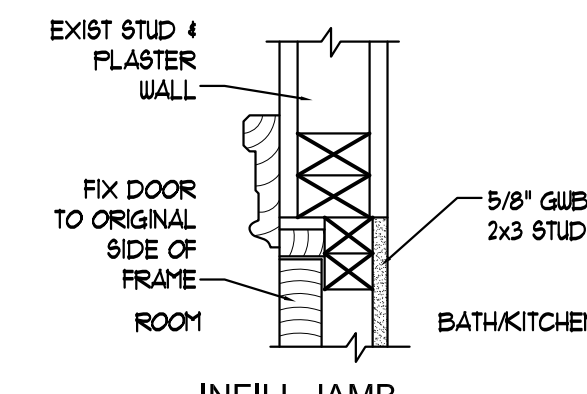
G UNIT #3 BATHROOM 3B ELEVATION
1/2"=1'-0"



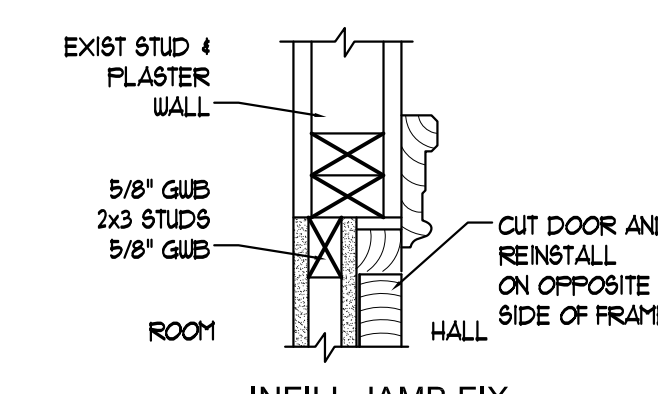
H UNIT #3 BATHROOM 3C ELEVATION
1/2"=1'-0"



I TYP EXIST JAMB
1 1/2"=1'-0"



J INFILL JAMB FIXED DOOR
1 1/2"=1'-0"



K INFILL JAMB FIX DOOR OPPOSITE SIDE
1 1/2"=1'-0"

Owner: VICKERY PINE, LLC
255 Western Prom
Portland, ME 04102
Construction Manager: **shinberg**
CONSULTING, LLC

Consulting Engineer: Structural Design Consultants, Inc
22 Oakmont Drive
Old Orchard Beach, ME 04064

Architect: **ARCHETYPE** architects
48 Union Wharf Portland, Maine 04101
(207) 772-6022 Fax (207) 772-4056

Project: 191 PINE STREET
PORTLAND, MAINE

Revisions: 8-24-12
Door Revision: 8-24-12

Scale: AS NOTED

Date: 09 July 2012

MAIN HOUSE
SECOND FLOOR PLAN
A1.2