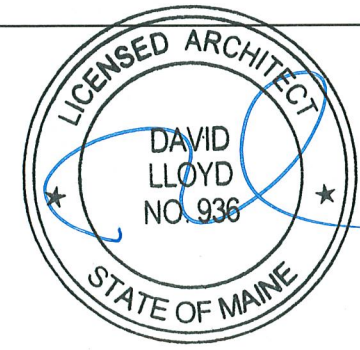


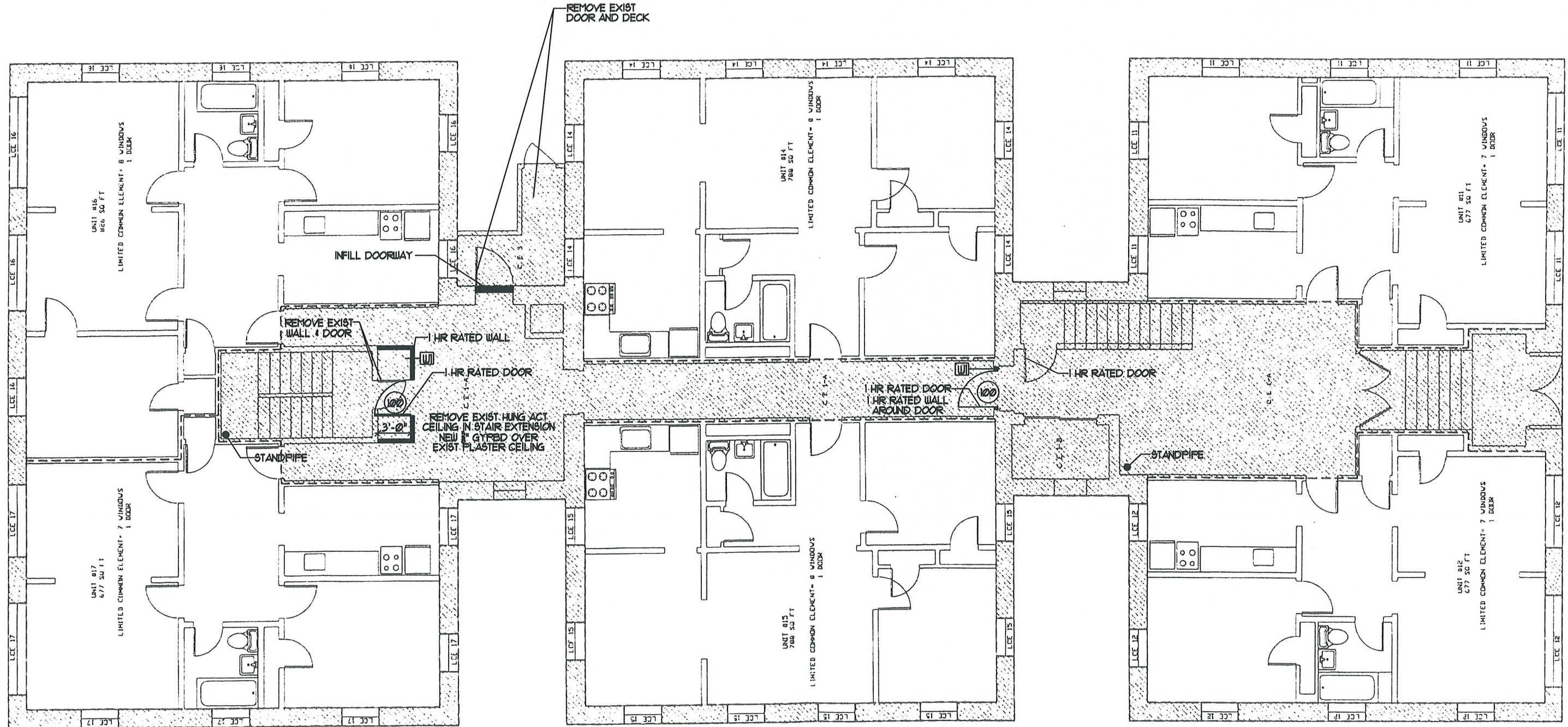
NOTE:  
 80 FT. SQUARE FEET  
 CE - COMMON ELEMENTS  
 B-1 - BASEMENT  
 B-2 - ELEVATION  
 1 - COVERED AREA  
 ACCESS WAY  
 LCE - LIMITED COMMON ELEMENTS

**BASEMENT FLOOR PLAN**

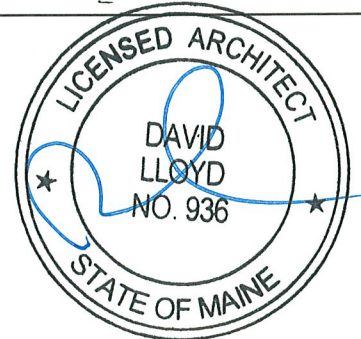
- KEY**
- EXIT SIGN
  - EXIT SIGN WITH DIRECTIONAL ARROW
  - EMERGENCY LIGHTING



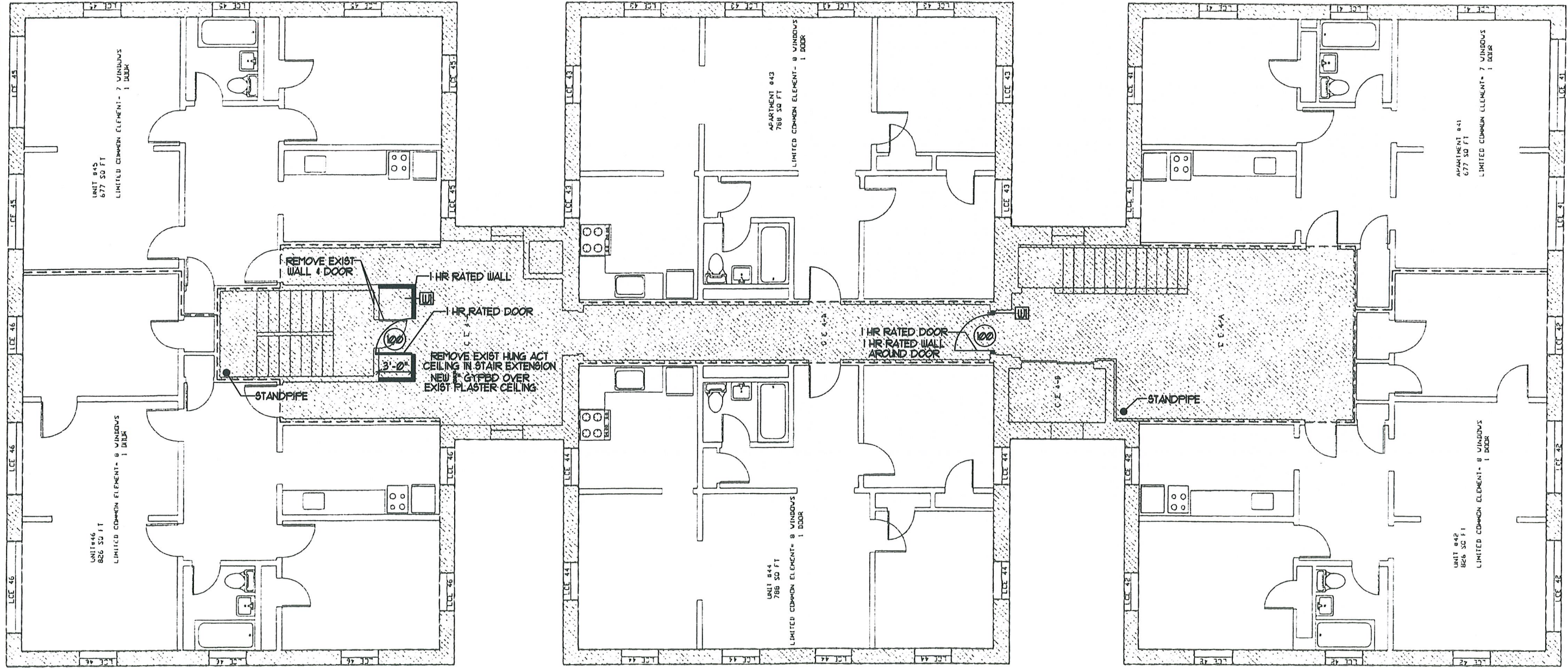
	Architect: <b>ARCHETYPE architects</b> 48 Union Wharf Portland, Maine 04101 (207) 772-6022 Fax (207) 772-4056
Project: <b>197 PINE STREET</b> 197 PINE STREET PORTLAND, MAINE	
Revisions: _____ _____ _____ _____ _____	
Date: 21 November 2008	Scale: NTS
<b>BASEMENT FLOOR PLAN</b>	
<b>A1</b>	



FIRST FLOOR PLAN

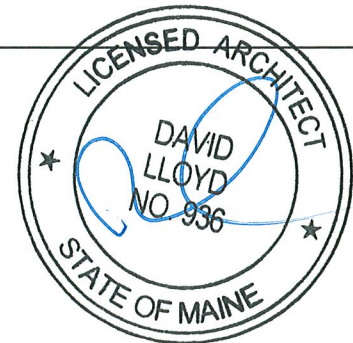


<p>Architect: <b>ARCHETYPE architects</b>        48 Union Wharf Portland, Maine 04101        (207) 772-6022 Fax (207) 772-4056</p>	
<p>Project:</p>	<p><b>197 PINE STREET</b>        197 PINE STREET        PORTLAND, MAINE</p>
<p>Revisions:</p>	<p>Scale: NTS</p>
<p>Date: 21 November 2008</p>	<p><b>FIRST FLOOR PLAN</b></p>
<p><b>A2</b></p>	



NOTE  
 SB FT= SQUARE FEET  
 CE= COMMON ELEMENTS  
 4= FOURTH FLOOR  
 A= HALLWAY/STAIRS  
 B= BATHROOM  
 LCE= LIMITED COMMON ELEMENTS

TYPICAL FLOOR PLAN



Architect:  
**ARCHETYPE**  
 architects  
 48 Union Wharf Portland, Maine 04101  
 (207) 772-6022 Fax (207) 772-4056

Project:  
 197 PINE STREET  
 PORTLAND, MAINE

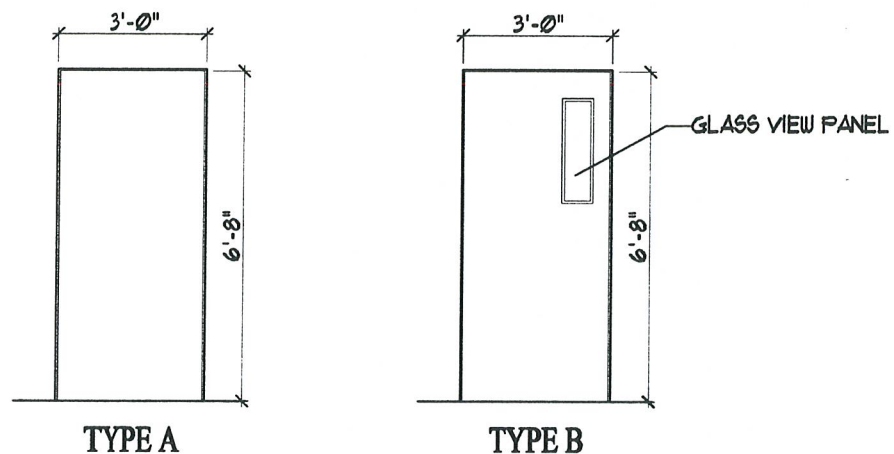
Revisions:

Date: 21 November 2008  
 Scale: NTS  
 TYPICAL FLOOR PLAN

A3

# DOOR SCHEDULE

DOOR SCHEDULE							
DOOR #	SIZE	DOOR			FRAME	LABEL	REMARKS
	WIDTH x HEIGHT x THICKNESS	TYPE	MATERIAL	THRESH	MATERIAL		
100	3'-0" X 6'-8" X 1 3/4"	B	METAL	ALUM	MTL	1 HR	
101	3'-0" X 6'-8" X 1 3/4"	A	METAL		MTL	1 HR	



DOOR TYPES

# WALL TYPES



GA FILE NO. WP 3510 GENERIC 1 HOUR FIRE

Thickness: 4 7/8"

Approx. Weight: 7 psf

Fire Test: UL R3501-47, -48, 9-17-65,

Design U309; UL R1319-129, 7-22-70,

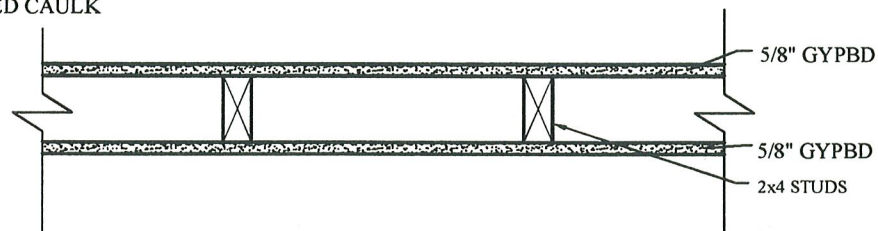
UL Design U314

Sound Test: NGC 2404, 10-14-70

GYPSPUM WALLBOARD, WOOD STUDS

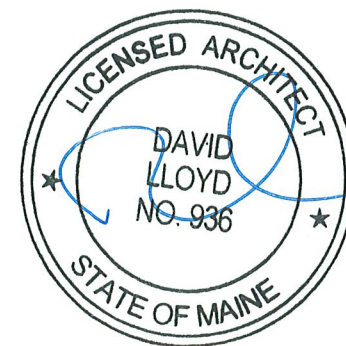
One layer 5/8" type X gypsum wallboard or gypsum veneer base applied parallel or at right angles to each side of 2x4 wood studs @ 24" o.c. with 6d coated nails, 1 7/8" long, 0.0915" shank, 1/4" heads, 7" o.c. Joints staggered 24" on opposite sides. (LOAD-BEARING)

NOTE: ALL RATED WALLS TO BE TAKEN THROUGH CEILING TO UNDERSIDE OF FLOOR SHEATHING AND TO BE CAULKED AT SHEATHING AND AROUND FRAMING WITH 1 HR RATED CAULK



## GENERAL NOTES:

1. ALL UNIT ENTRANCE DOORS TO RECEIVE SPRING HINGES
2. ALL UNITS TO RECEIVE HEAT DETECTORS IN EACH ROOM PER NFPA 1011 31.3.4.4.1
3. STAIRWAYS TO RECEIVE STAIRWAY MARKING COMPLYING WITH NFPA 101 7.2.2.5.4
4. DOOR ASSEMBLIES TO BE 1 HR RATED
5. STAIR DOORS MUST SWING IN DIRECTION OF EGRESS TRAVEL
6. STANDPIPE MUST BE BROUGHT TO CODE
7. HOLES IN BASEMENT WALL AND CEILING MUST BE REPAIRED
8. RELOCATE OIL TANKS IN MECHANICAL ROOM
9. EXIT SIGNS SHALL BE MAINTAINED AND ILLUMINATED AT ALL TIMES
10. KNOX BOX REQUIRED AT ENTRANCE
11. 1 HR RATED CORRIDOR ADDED IN BASEMENT
12. 1 HR RATED TRASH ROOM ADDED IN BASEMENT
13. 1 HR RATED LAUNDRY ROOM ADDED IN BASEMENT WITH NEW RIGID DUCTWORK



Architect  
**ARCHETYPE**  
 architects  
 48 Union Wharf Portland, Maine 04101  
 (207) 772-6022 Fax (207) 772-4056

Project:  
 197 PINE STREET  
 197 PINE STREET  
 PORTLAND, MAINE

Revisions:	

Scale:  
 21 November 2008 NTS  
**DOOR SCHEDULE AND WALLTYPE**

Date:  
 A4