

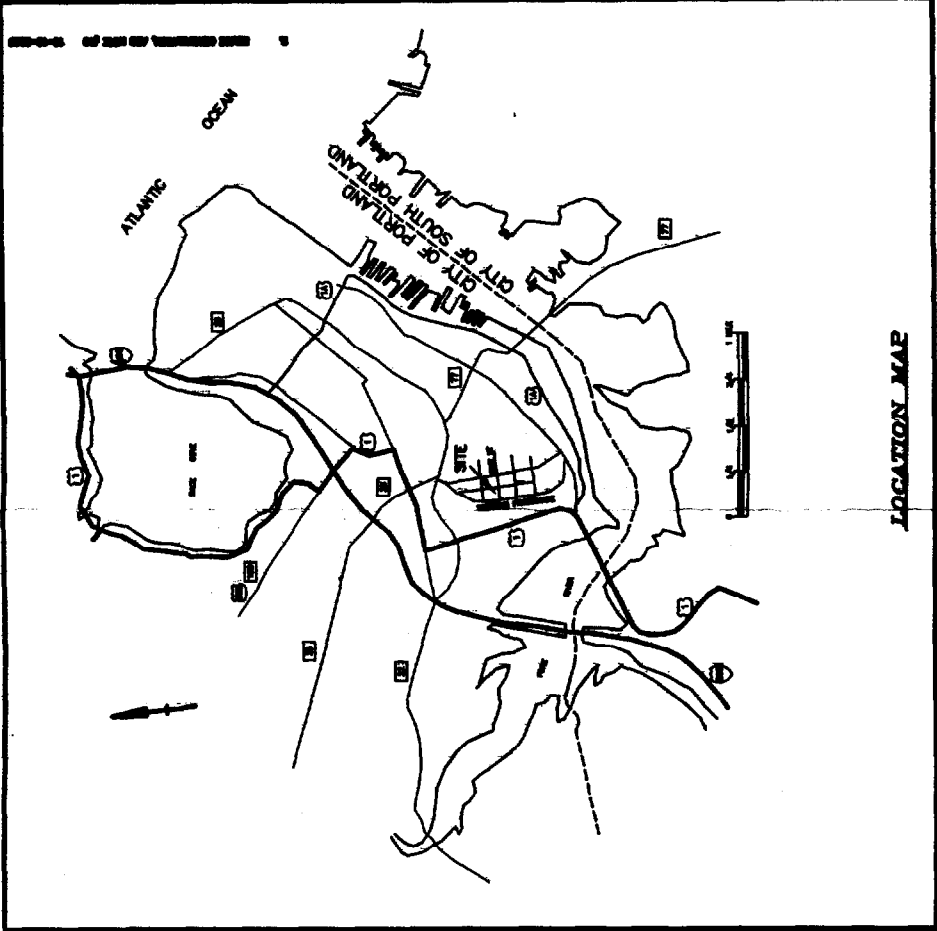
DATE: JANUARY 7, 1999
 BY: Steven M. J. M.C.
 CHECKED BY: Applied by
 PLO

Dow & Colton, Inc.
 Land Surveyors & Land Planners
 15 Park Street, Room, ME 04073
 Telephone: 207-284-4521 • Fax: 207-284-4522



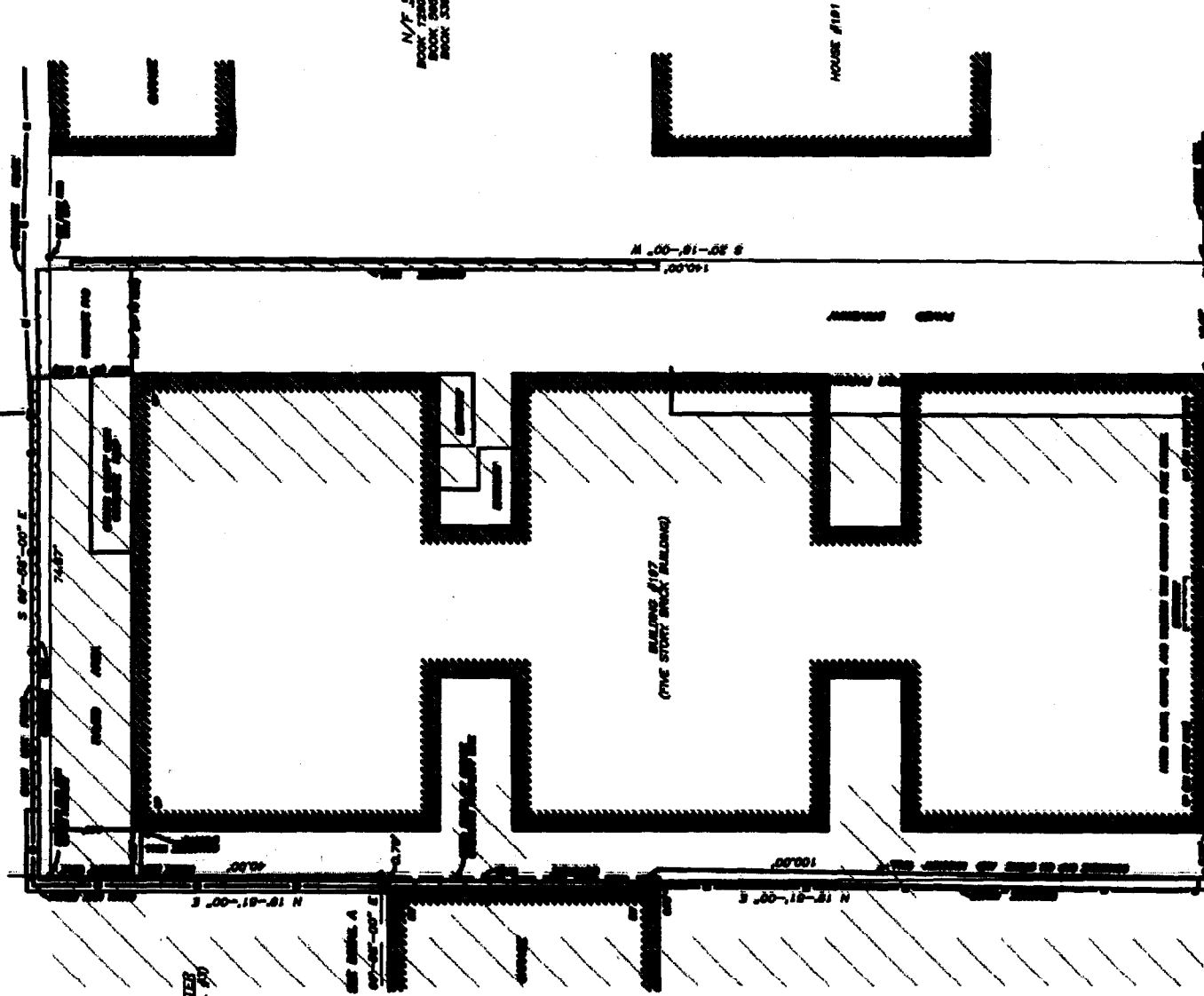
STEPHEN G. STRONG & GERALDINE A. STRONG
 ALTA/NSM LAND TITLE SURVEY (UMBA) MADE FOR
PORTLAND MAINE
 PARCEL LOCATED AT 187 PINE STREET
 (MAILING ADDRESS: SEASIDE AVENUE, SUITE 04072)
 PORTLAND MAINE

No.	Revisions	Date



CHADWICK STREET (T STREET)
 (60' WIDE)

SEE NOTE #4



N/T MAINE MEDICAL CENTER
 BOOK 279A, PAGE 281 (PARCEL #4)
 BOOK 308, PAGE 640
 BOOK 302, PAGE 677
 BOOK 302, PAGE 251

N/T MAINE MEDICAL CENTER
 BOOK 279A, PAGE 281 (PARCEL #4)
 BOOK 302, PAGE 251

N/T SUGBET
 BOOK 178V, PAGE 670
 BOOK 302, PAGE 251

N/T GLEICHMAN
 BOOK 308, PAGE 283
 BOOK 302, PAGE 251

ALL
 SHOWN
 D UNLTY LINDS
 NK

1. PLAN OF LAND OF LOTS IN PORTLAND DISTRICT OF THE DISTRICT OF DEER, MAINE, INCORPORATED AT CHARLESTON COUNTY REGISTERED DEED IN PLAT BOOK 1, PAGE 24.
2. PLAN OF PINE STREET, CHADWICK STREET, AND WESTERN PORTLAND OF ME AT THE OFFICE OF THE CITY ENGINEER.
3. PLAN OF CHADWICK STREET, CHADWICK STREET, AND WESTERN PORTLAND OF ME AT THE OFFICE OF THE CITY ENGINEER.
4. PLAN OF CHADWICK STREET, CHADWICK STREET, AND WESTERN PORTLAND OF ME AT THE OFFICE OF THE CITY ENGINEER.
5. PLAN OF CHADWICK STREET, CHADWICK STREET, AND WESTERN PORTLAND OF ME AT THE OFFICE OF THE CITY ENGINEER.
6. PLAN OF CHADWICK STREET, CHADWICK STREET, AND WESTERN PORTLAND OF ME AT THE OFFICE OF THE CITY ENGINEER.
7. PLAN OF CHADWICK STREET, CHADWICK STREET, AND WESTERN PORTLAND OF ME AT THE OFFICE OF THE CITY ENGINEER.
8. PLAN OF CHADWICK STREET, CHADWICK STREET, AND WESTERN PORTLAND OF ME AT THE OFFICE OF THE CITY ENGINEER.
9. PLAN OF CHADWICK STREET, CHADWICK STREET, AND WESTERN PORTLAND OF ME AT THE OFFICE OF THE CITY ENGINEER.
10. PLAN OF CHADWICK STREET, CHADWICK STREET, AND WESTERN PORTLAND OF ME AT THE OFFICE OF THE CITY ENGINEER.

TO FIRST AMERICAN TITLE INSURANCE CORPORATION AND WEST END
 LYNNA, LLC
 THIS MAP IS MADE BY THE SURVEY ON WHICH IT IS BASED HERE UNLESS
 IN WRITING BY THE SURVEYOR. THE SURVEYOR'S LIABILITY FOR
 ANY ERRORS OR OMISSIONS SHALL BE LIMITED TO THE AMOUNT
 OF THE FEE CHARGED FOR THE SURVEY. THE SURVEYOR IS NOT
 RESPONSIBLE FOR ANY ERRORS OR OMISSIONS IN THE RECORDS
 OF ANY PUBLIC OFFICE OR FOR ANY ERRORS OR OMISSIONS IN THE
 RECORDS OF ANY OTHER PARTY.

PINE STREET (90' WIDE)
(W STREET)



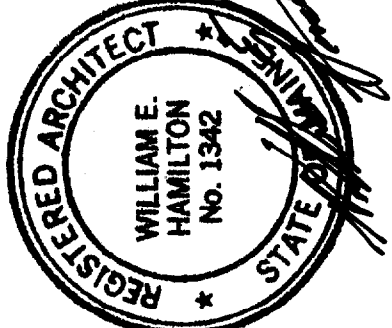
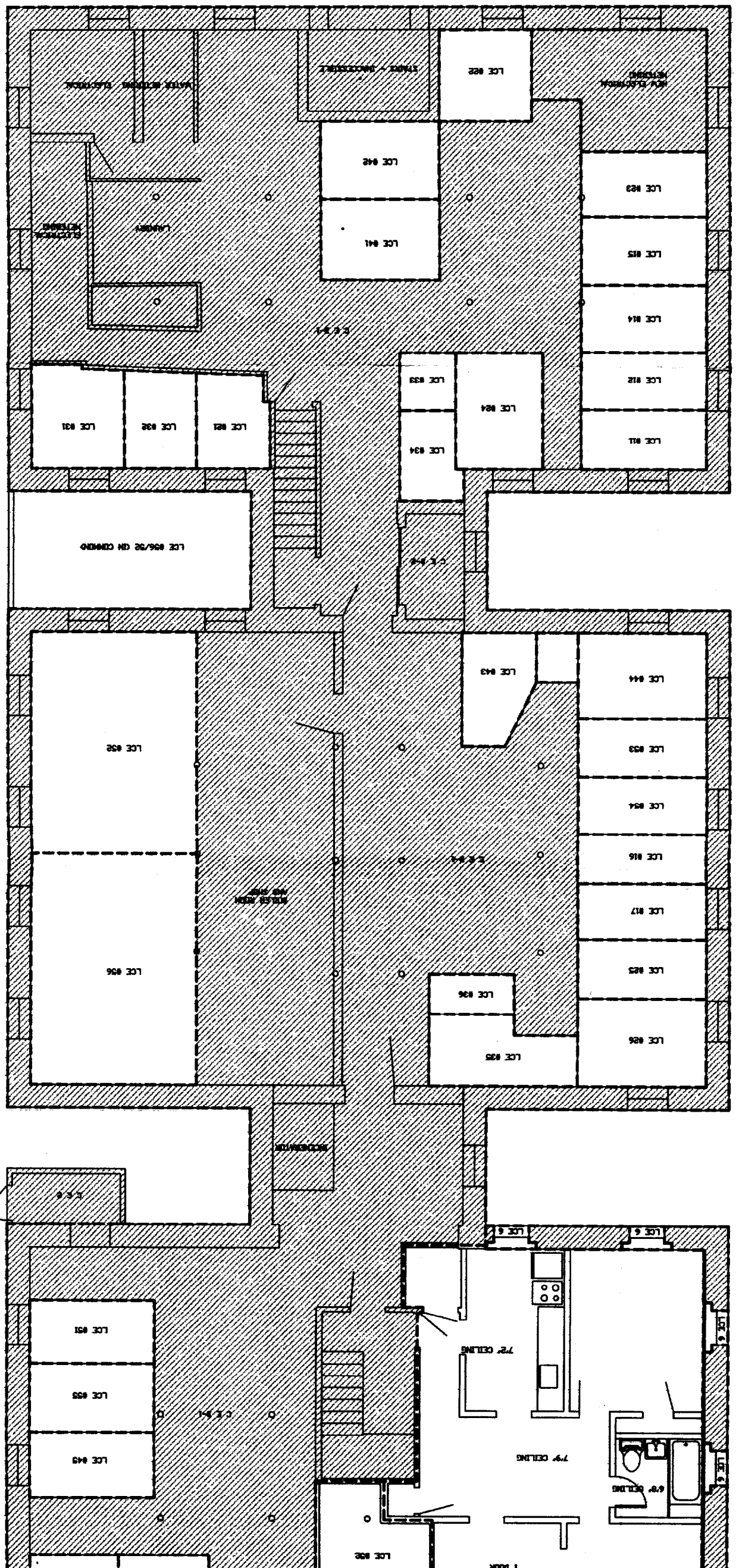
SHEET
7A

AI

BASEMENT PLAN
 1/8" = 1'-0" SCALE
 1/8" = 1'-0" SCALE

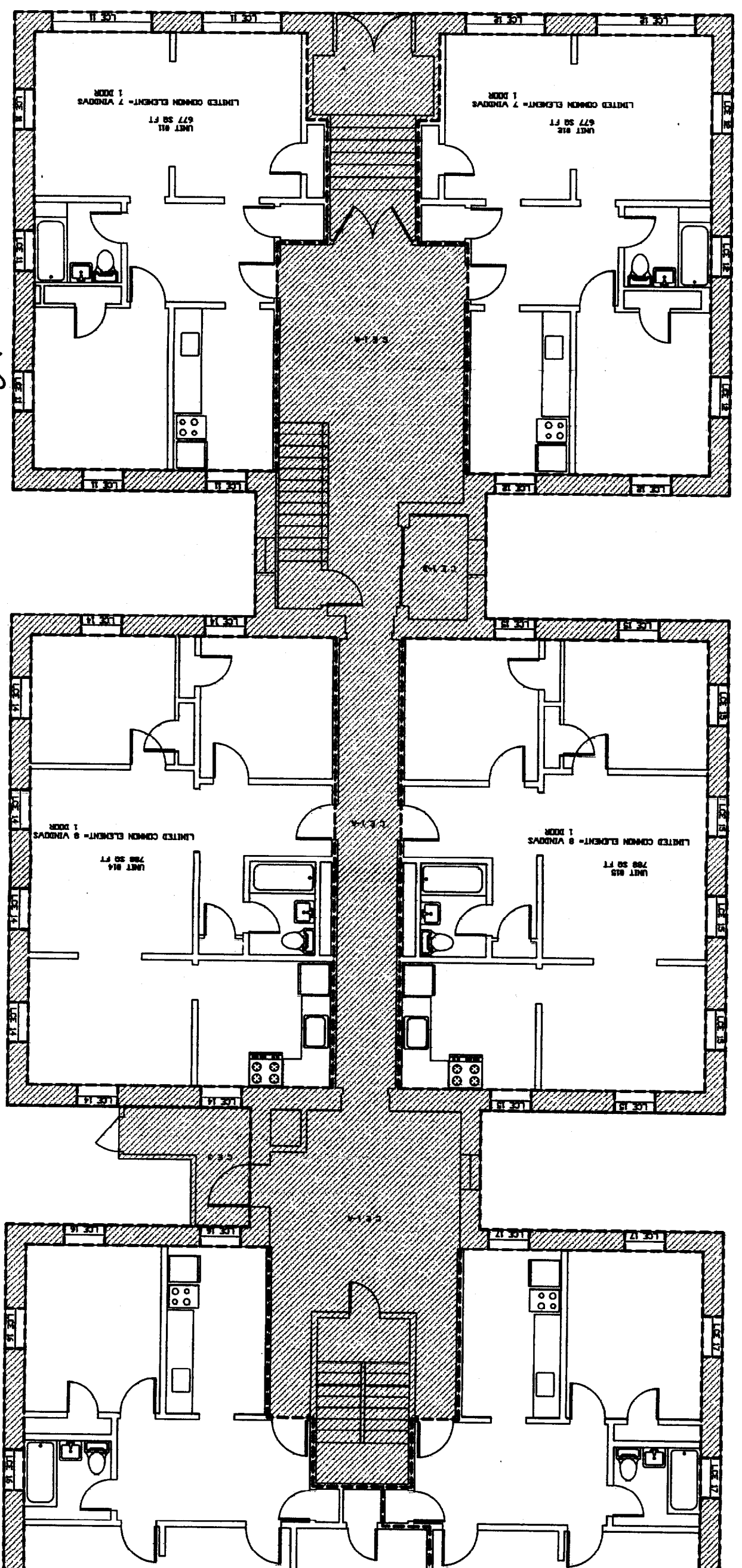
JAY & HANCOCK ARCHITECTS, INC.
 242 WEST STREET
 PORTLAND, ME 04103
 (603) 788-1000

WEST TWO CORP., A CORPORATION
 197 PINE STREET
 PORTLAND, ME 04102

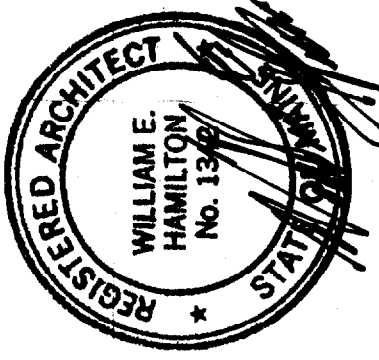


NOTE:
 80 FT. SQUARE FEET
 CE = COMMON ELEMENTS
 B-1 = BASEMENT
 4-4 = ELEVATOR
 1-1 = COVERED AREA
 8" ACCESS WAY

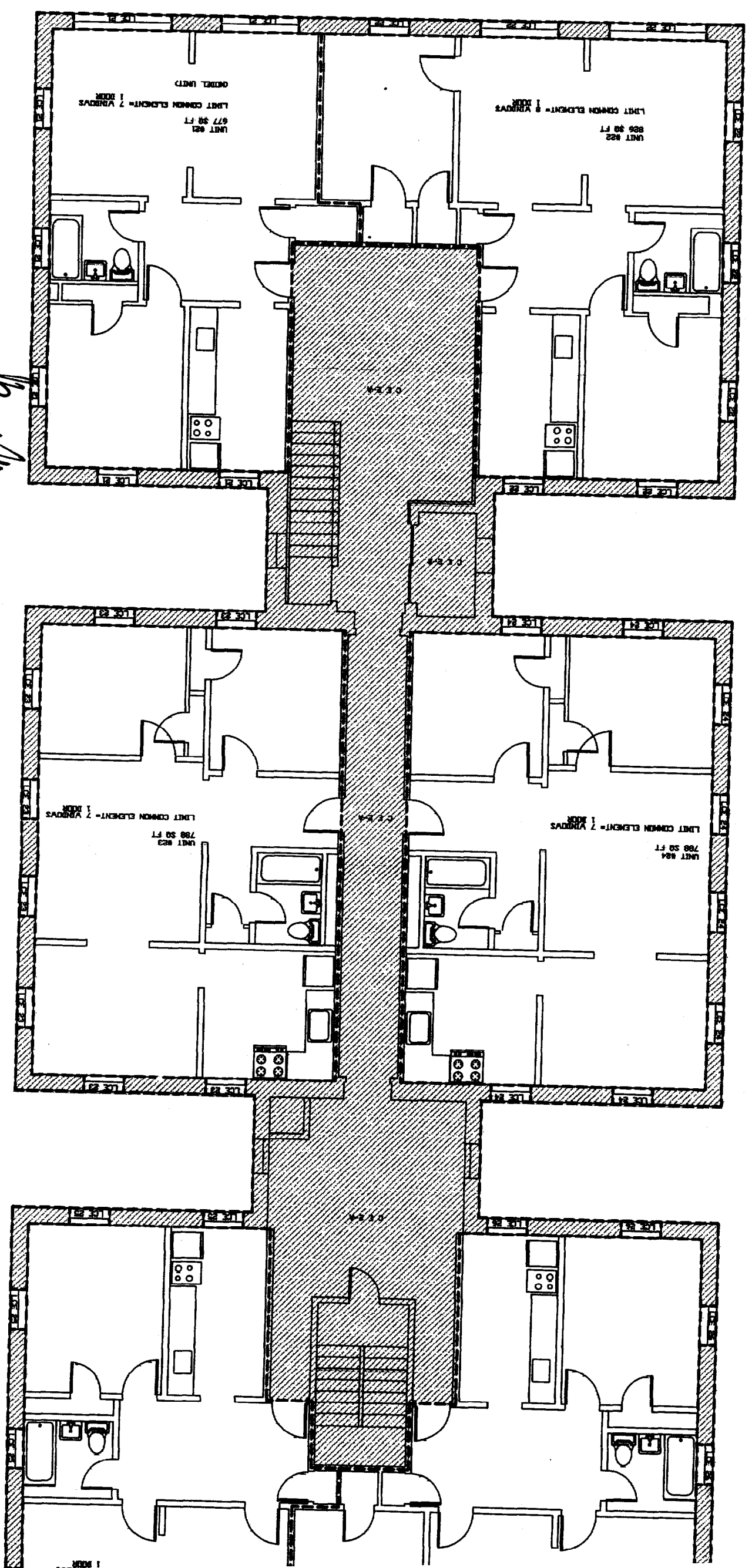
SHEET
A2
 TITLE
1ST FLOOR PLAN
 CITY & BANGOR ARCHITECTS, INC.
 197 PINE STREET
 PORTLAND, MAINE
 197 PINE STREET
 PORTLAND, MAINE



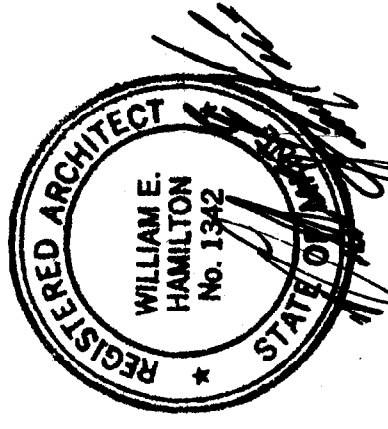
32 FT. SQUARE FEET
 02- COMMON ELEMENTS
 1- FIRST FLOOR
 4- HALL W/STAIRS
 2- ELEVATOR
 3- EXIT STAIR
 LCF- LIMITED COMMON ELEMENTS



721
A3
2ND FLOOR PLAN
 UNIT 821
 UNIT 822
 UNIT 823
 UNIT 824
WILLIAM E. HAMILTON ARCHITECTS, INC.
 197 PINE STREET
 PORTLAND, MAINE
REGISTERED ARCHITECTS



59 FT. SQUARE FEET
 CE = COMMON ELEMENTS
 2 = SECOND FLOOR
 H = HALLWAY/STAIRS
 E = ELEVATOR
 LCE = LIMITED COMMON ELEMENTS

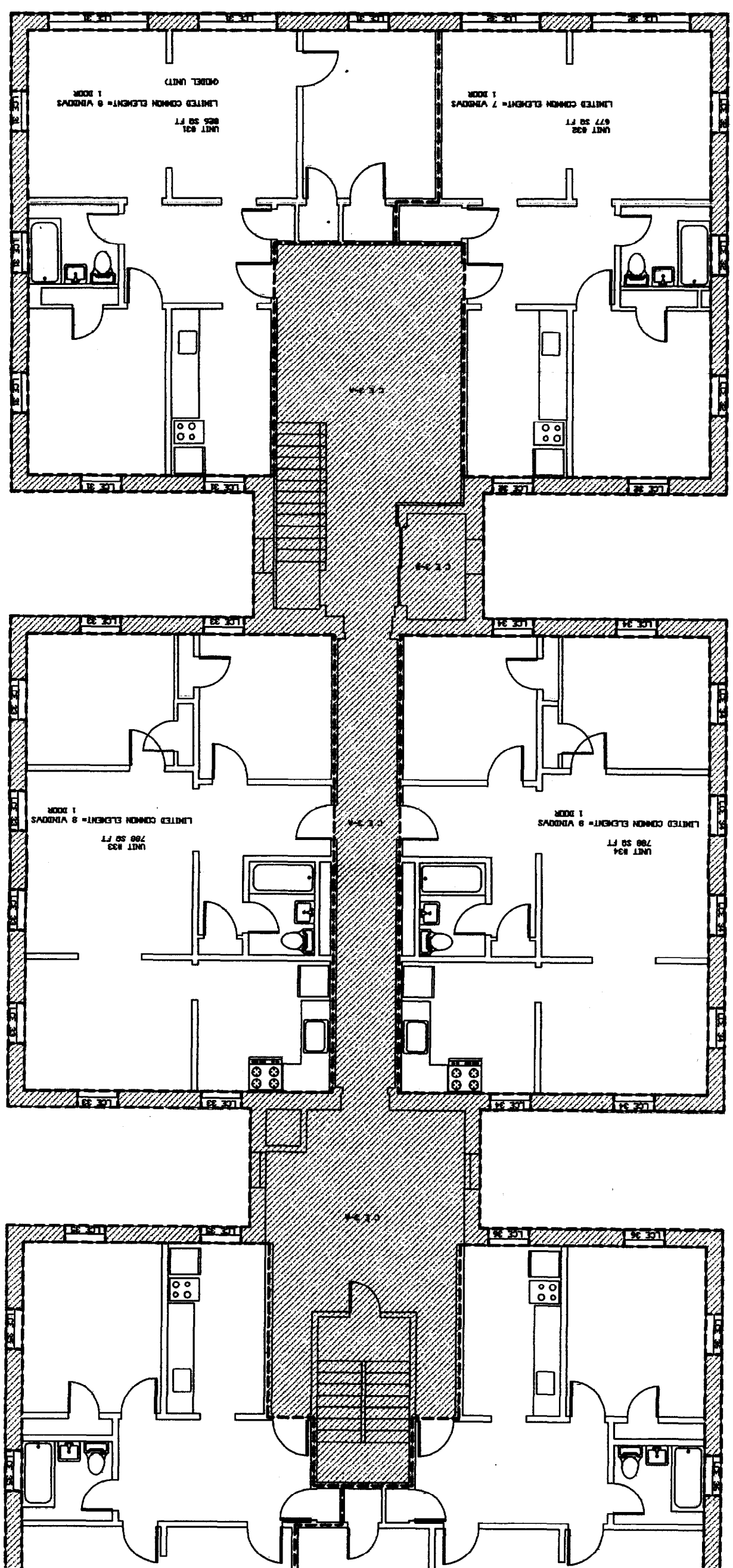


3RD FLOOR PLAN
 UNIT 828 677 SQ. FT.
 UNIT 829 677 SQ. FT.
 UNIT 833 788 SQ. FT.
 UNIT 834 788 SQ. FT.

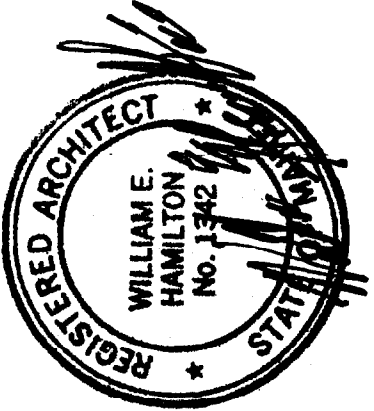
CITY OF BANGOR ARCHITECTS, INC.
 202 STATE STREET
 BANGOR, ME 04401
 REGISTERED ARCHITECTS

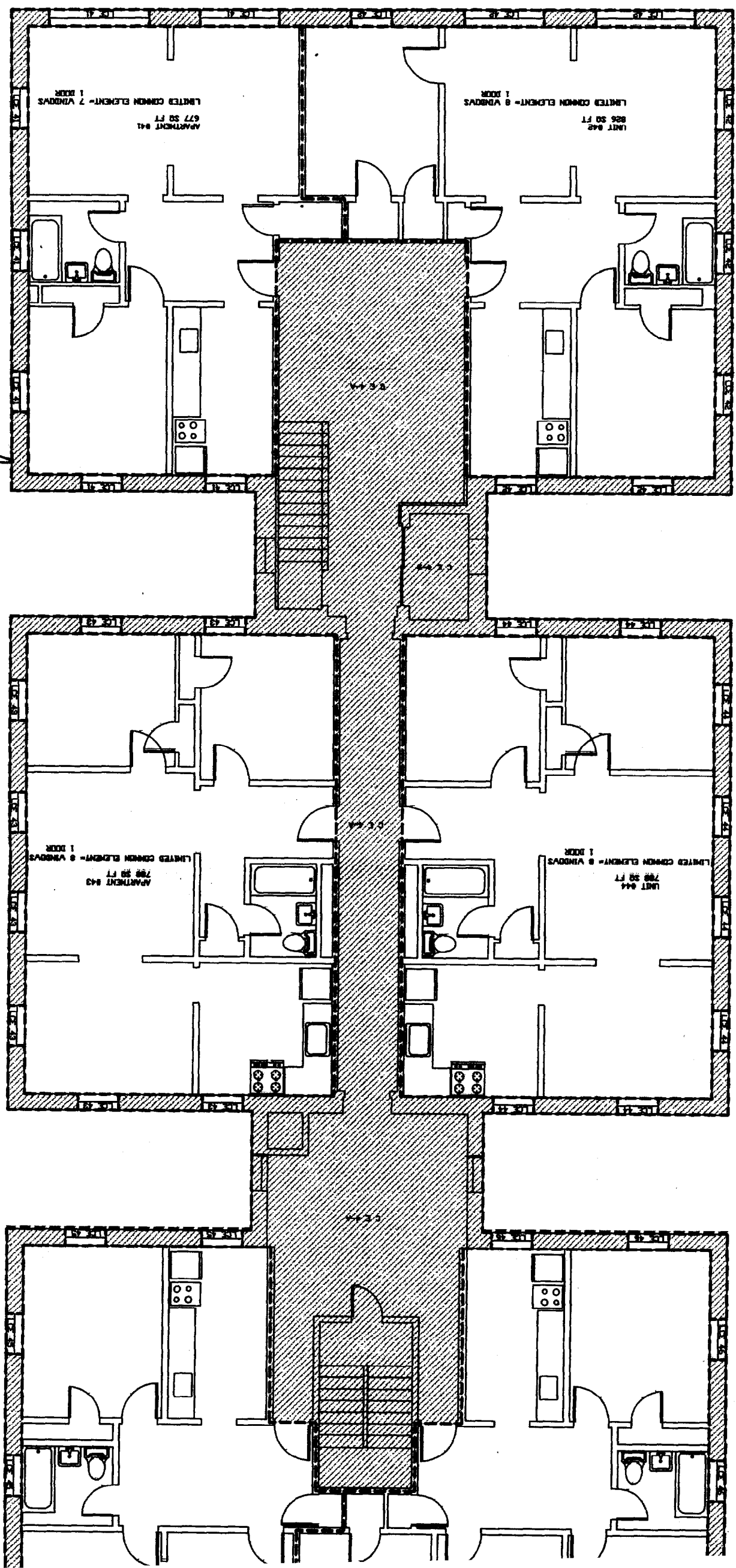
197 PINE STREET
 PORTLAND, MAINE

AA
 72

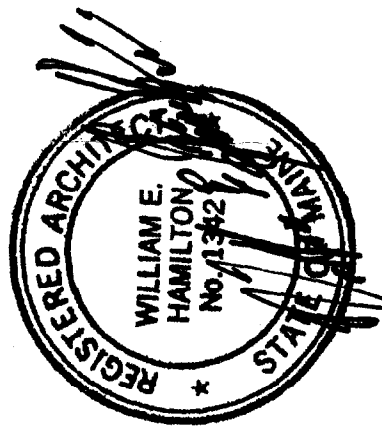


NOTE:
 SQ FT. - SQUARE FEET
 CE - COMMON ELEMENTS
 3 - THIRD FLOOR
 2 - HALLWAYS
 2 - ELEVATOR
 2 - LIMITED COMMON ELEMENTS



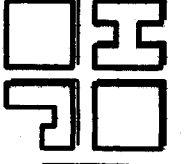


NOTE:
 50 FT² SQUARE FEET
 CE - COMMON ELEMENTS
 4 - FOURTH FLOOR
 3 - HALLWAY/STAIRS
 2 - ELEVATOR
 1 - LIMITED COMMON ELEMENTS

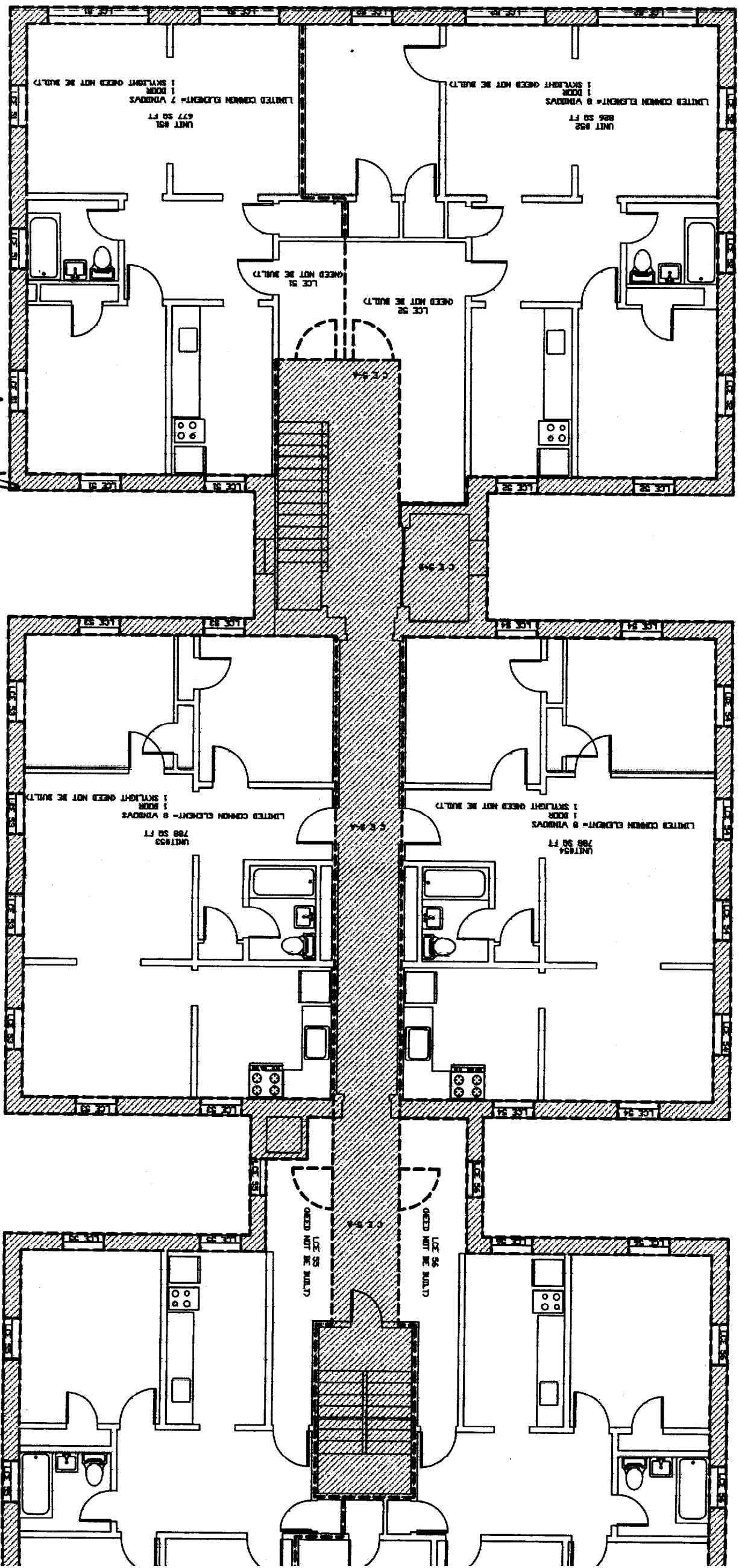


4TH FLOOR PLAN
 SHEET **A5**
 CITY & HANOVER ARCHITECTS, INC.
 202 COURT STREET
 PORTLAND, ME 04101
 TEL: 865-4444
 FAX: 865-4444
 197 PINE STREET
 PORTLAND, MAINE
 7A

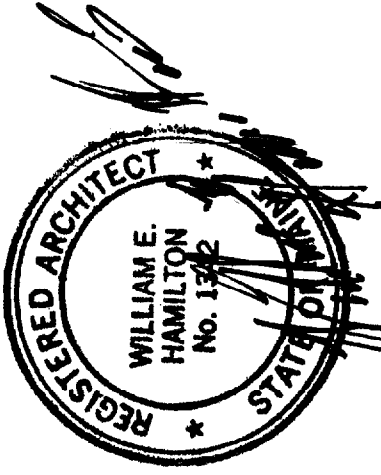
SHEET **A6**
 TITLE **5TH FLOOR PLAN**
 DATE
 DRAWN BY
 CHECKED BY
 PROJECT NO.
 197 PINE STREET
 PORTLAND
 MAINE



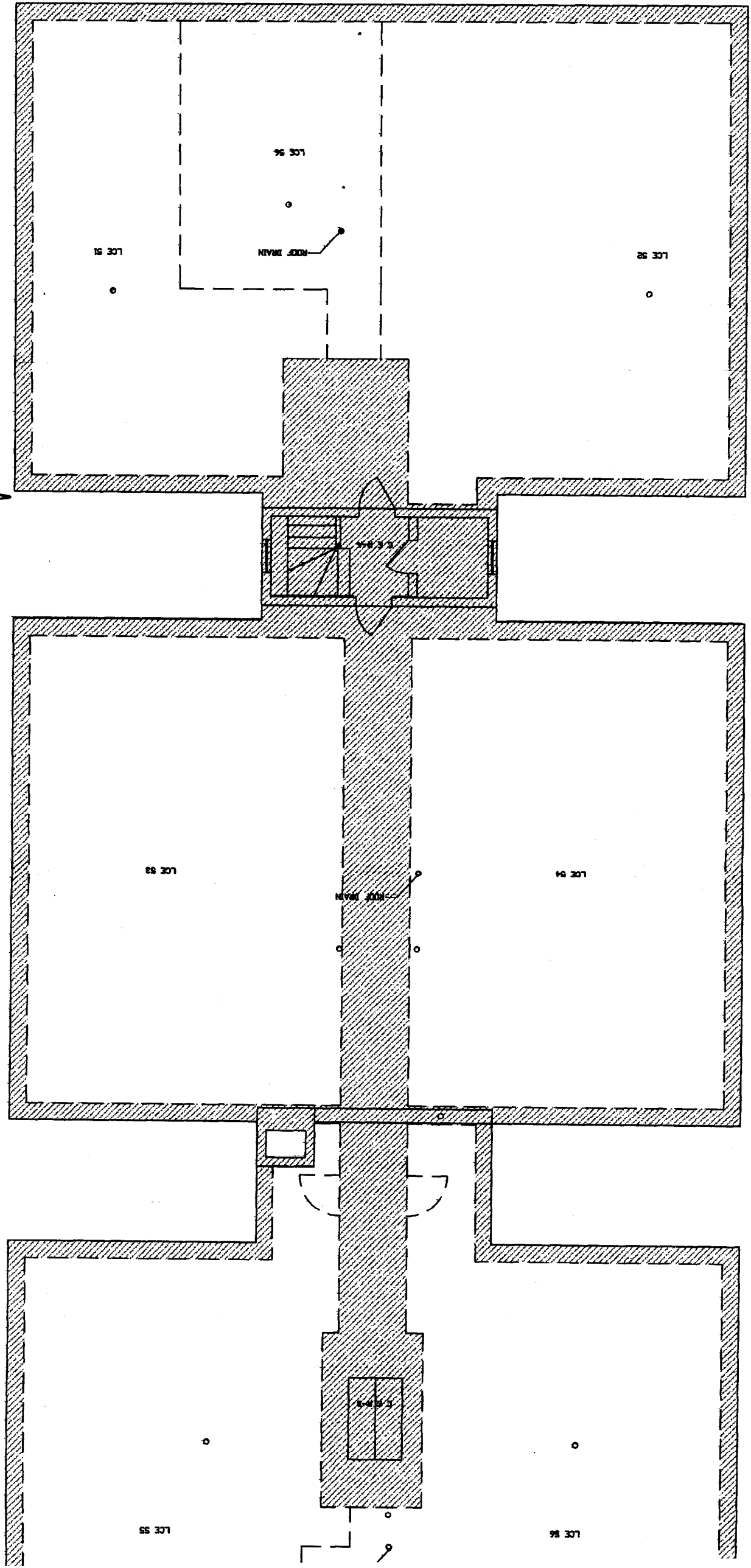
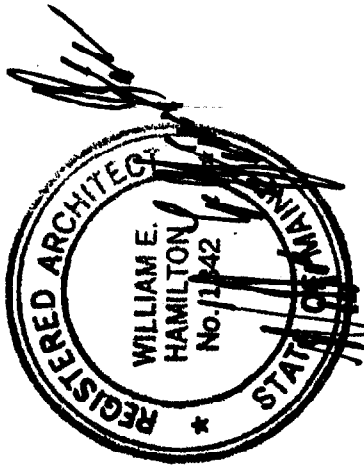
JET & HAMILTON ARCHITECTS, INC.
 100 MAIN STREET
 PORTLAND, ME 04101
 TEL: 857-281-0007
 FAX: 857-281-0008

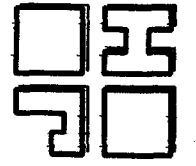


NOTE:
 78 SQUARE FEET
 CEILING ELEMENTS
 5 FIFTH FLOOR
 3 ELEVATOR
 2 ELEVATOR
 1 LIMITED COMMON ELEMENTS

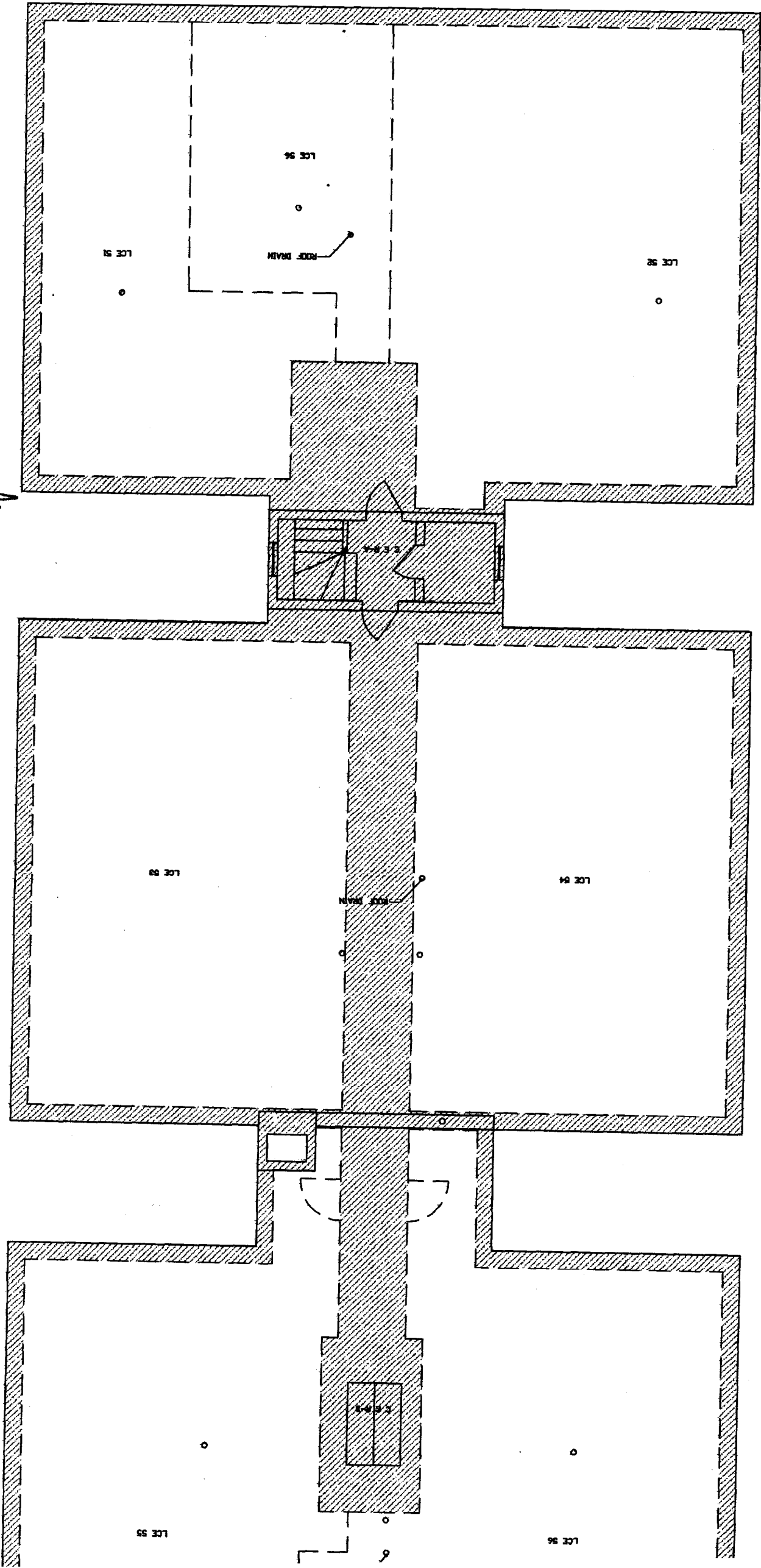
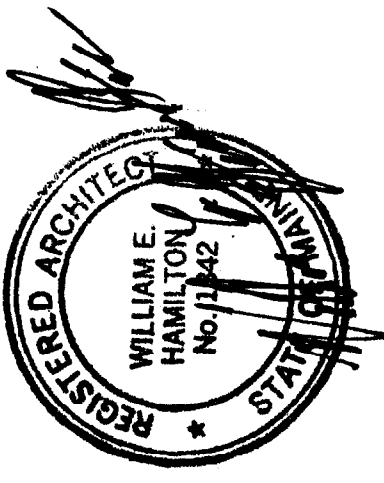


NOTE:
 50 FT. SQUARE FEET
 OR COMMON ELEMENTS
 4" ROOF ACCESS WAY
 2" SKYLIGHT
 LCE - LIMITED COMMON ELEMENTS




 JJC ARCHITECTS, INC.
 197 W. BANGOR AVENUE, BANGOR, ME 04401
 207-688-1111
 197 PINE STREET, PORTLAND, MAINE 04101
 PROJECT NO. 1142
 SHEET NO. A7
 DATE: 11/14/20

NOTE:
 50 FT² = SQUARE FEET
 CE = COMMON ELEMENTS
 RE = ROOF ACCESS WAY
 24" = RADIUS
 24" = SPAN



W. E. HAMILTON ARCHITECTS, INC.
 197 PINE STREET
 PORTLAND, MAINE 04101
 TEL: 857-2800
 FAX: 857-2801

PROJECT: ROOF PLAN
 SHEET: A7
 DATE: 10/1/88

197 PINE STREET
 PORTLAND, MAINE