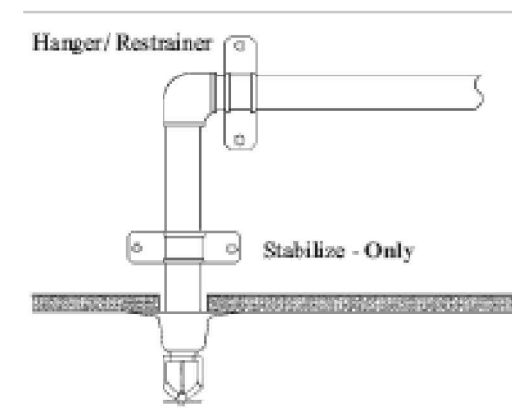
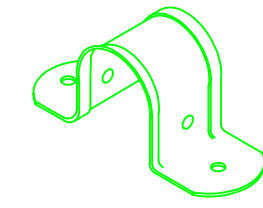


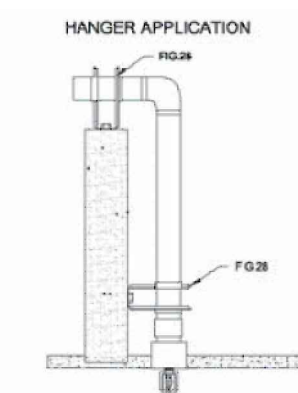
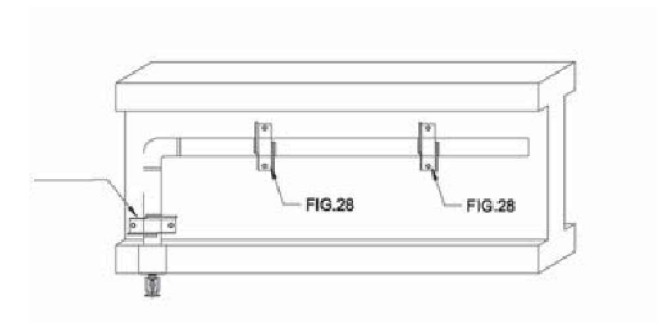
**OFFSET CPVC PIPE STRAP**  
(ATTACHED WITH HEX SELF TAPPING SCREWS OR SCREW & NUT)



**DOUBLE FASTENER CPVC PIPE STRAP**  
(attached with hex self tapping screws OR SCREW & NUT)

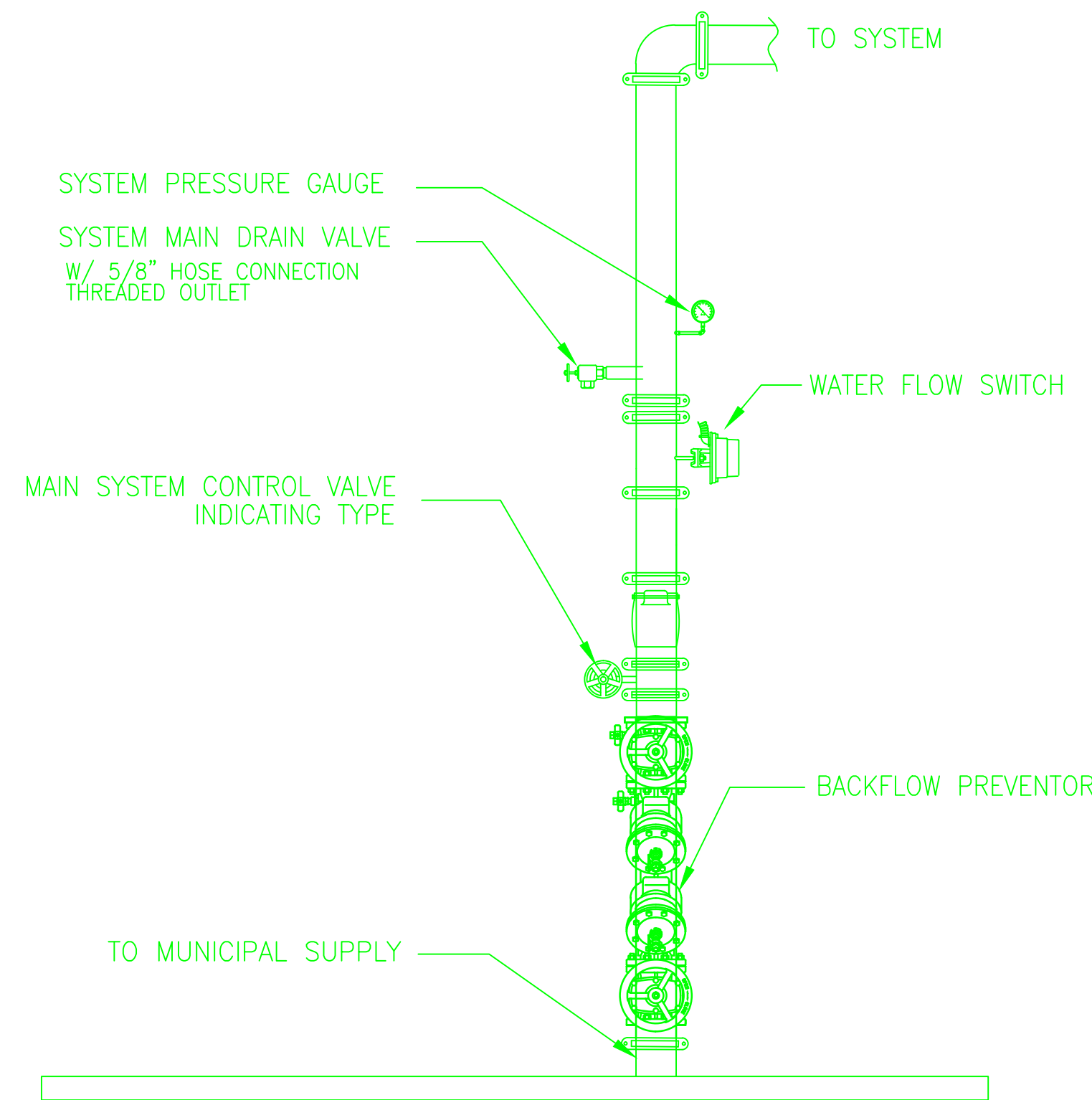


**OFFSET "STANDOFF" TYPE CPVC PIPE HANGER/RESTRAINT**  
(ATTACHED WITH HEX SELF TAPPING SCREWS OR SCREW & NUT)



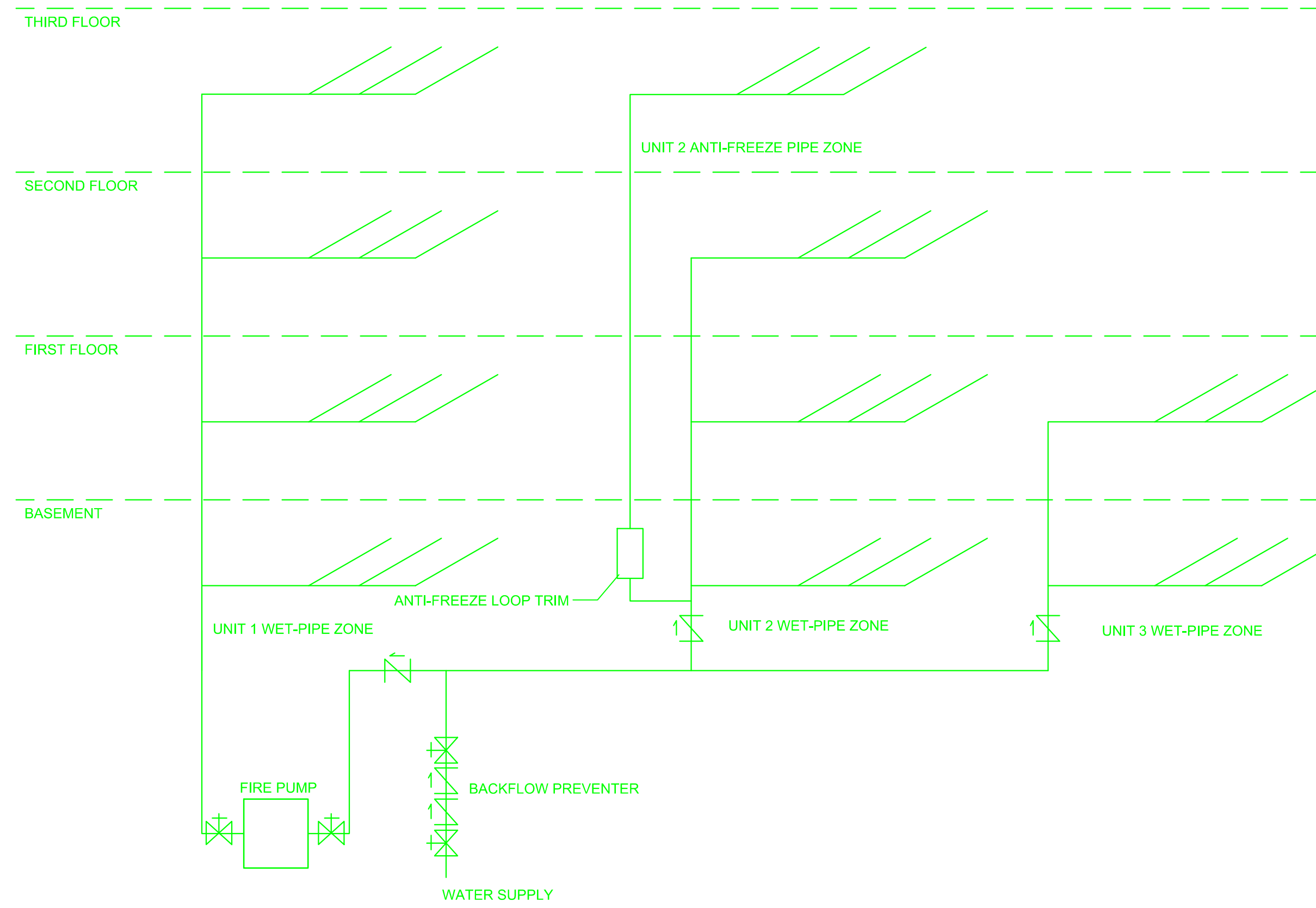
**CPVC HANGER DETAILS**

NOT TO SCALE



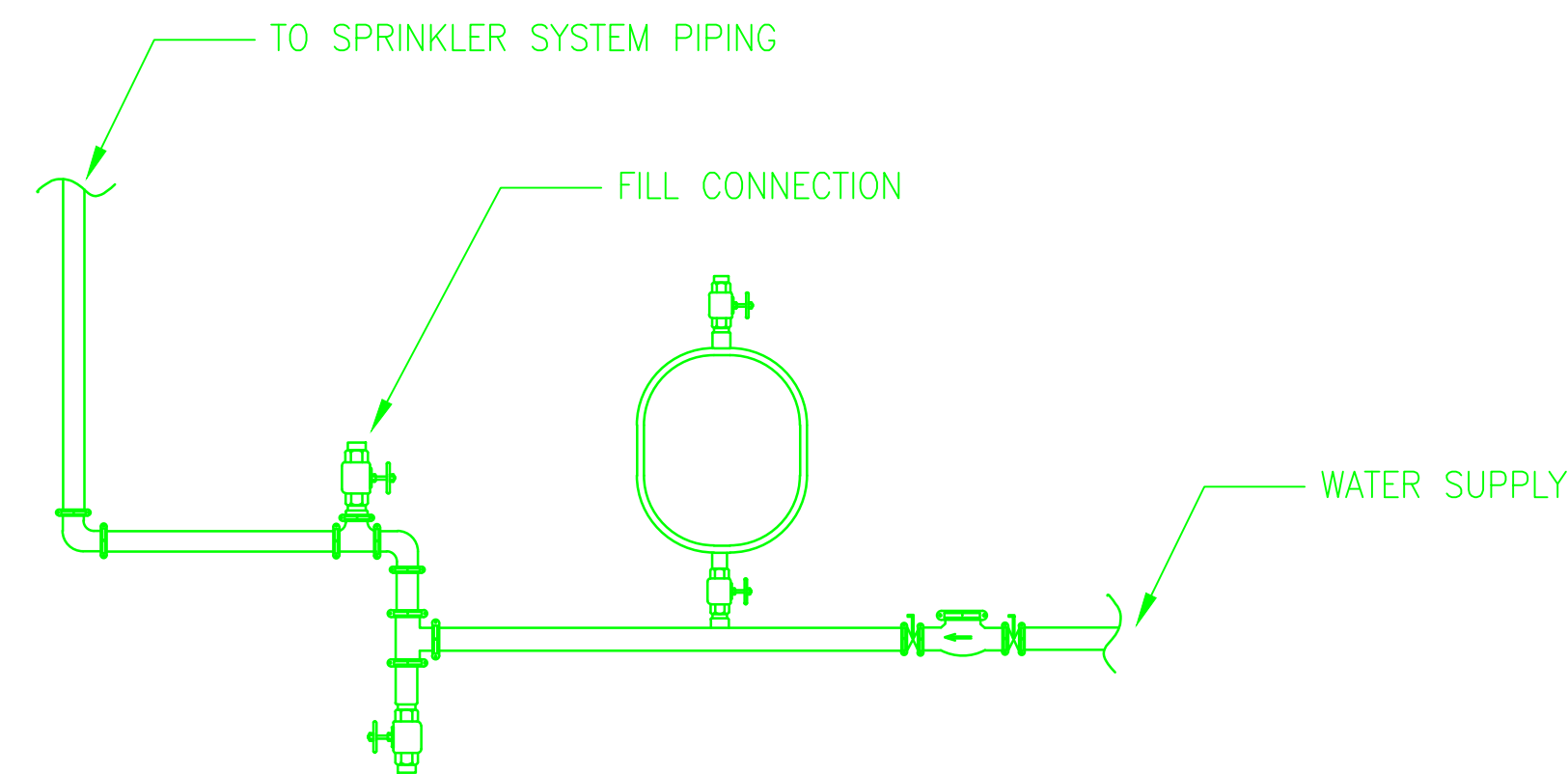
**FIRE WATER SERVICE RISER**

NOT TO SCALE



**RISER DIAGRAM**

NOT TO SCALE



NOTE: ADDITIONAL ACCESSORIES SUCH AS ISOLATION VALVES, ETC. ARE NOT SHOWN FOR CLARITY

**ANTI-FREEZE LOOP PIPING DETAIL**

NOT TO SCALE

**NOTES**

ALL DISTANCES, HEIGHTS AND DIMENSIONS OF THE BUILDING AND ITS SYSTEMS WILL BE VERIFIED PRIOR TO THE START OF WORK. THIS INCLUDES LOCATION OF SYSTEM COMPONENTS WITHIN INDIVIDUAL SPACES/AREAS,

DURING INSTALLATION, PIPE AND SPRINKLER LOCATIONS WILL BE COORDINATED TO ENSURE ADEQUATE SPACING FROM LIGHTS, DIFFUSERS, ELECTRICAL AND MECHANICAL EQUIPMENT, ETC. ARE MAINTAINED

ALL COMPONENTS, MATERIALS, AND WORKMANSHIP (PIPE, FITTINGS, VALVES, SPRINKLERS, GAGES, ETC.) SHALL MEET THE REQUIREMENTS OF NFPA 13R, LOCAL REQUIREMENTS AND ALL OTHER APPLICABLE CODES

ALL PIPE HANGER LOCATIONS WILL BE VERIFIED TO AVOID ALL INTERFERENCES AND CONFORM TO ALL NFPA REQUIREMENTS. SPECIAL CARE SHALL BE TAKEN NOT TO EXCEED NFPA HANGER SPACING REQUIREMENTS.

AFTER INSTALLATION, PERIODIC INSPECTION OF SPRINKLER SYSTEM AND DEVICES IS STRONGLY RECOMMENDED. OWNER IS RESPONSIBLE FOR PROPER MAINTENANCE OF SYSTEM. INSTALLING CONTRACTOR SHALL PROVIDE INSTRUCTIONS TO OWNER/ OCCUPANT(S) ON INSPECTING, TESTING AND MAINTAINING THE SYSTEM.

**SPRINKLERS**

ALL SPRINKLERS SHALL BE RESIDENTIAL, QUICK RESPONSE TYPE AS INDICATED ON DWGS.

SPRINKLER LOCATIONS SHOWN ON DRAWING ARE PRIMARILY FOR PERMITTING PURPOSES ONLY. FINAL SPRINKLER LOCATIONS WILL BE BASED ON ACTUAL INSTALLATION REQUIREMENTS, INCLUDING INTERFERENCES.

GLOBE SPRINKLERS WERE USED FOR HYDRAULIC CALCULATION PURPOSES BASED ON SPACING.

**PIPING**

PIPE SIZES SHOWN ON DRAWINGS PROVIDE THE BASIS FOR THE HYDRAULIC CALCULATIONS. ANY MODIFICATION TO THESE PIPE SIZES SHALL BE APPROVED BY THE DESIGN ENGINEER TO VERIFY PROPER PRESSURE AND FLOW IS MAINTAINED WITHIN THE HYDRAULICALLY MOST DEMANDING AREA(S).

CONFIRM LOCATION OF FIRE DEPARTMENT CONNECTION WITH FIRE DEPARTMENT AND AHJ.

**WATER SUPPLY**

THE WATER SUPPLY (SUPPLY PIPE LOCATION, WATER PRESSURE) MUST BE CONFIRMED.

**NARRATIVE SPRINKLER SYSTEM DESCRIPTION**

A NEW WET SPRINKLER SYSTEM WITH A DRY-PIPE ZONE WILL BE INSTALLED IN A MULTI-UNIT BUILDING. THE BUILDING WILL BE PROVIDED WITH A SPRINKLER SYSTEM MEETING NFPA 13R - 2010 ED. AND ALL OTHER STATE AND LOCAL CODES OR MANUFACTURER'S REQUIREMENTS. SPRINKLERS TO BE INSTALLED THROUGHOUT THE PREMISES, EXCEPT CLOTHES CLOSETS UNDER 24 SQ. FT., BATHROOMS UNDER 55 SQ. FT., OPEN PORCHES AND SIMILAR SPACES AS ALLOWED BY CODE AND/OR RULING OF THE AUTHORITY HAVING JURISDICTION.

**MAXIMUM DISTANCE BETWEEN PIPE HANGERS (FEET)**

NOMINAL PIPE SIZE (in.)	1"	1-1/4"	1-1/2"	2"	2-1/2"	3"	4"	6"
SCH 40 STEEL	12-0	12-0	15-0	15-0	N/A	N/A	N/A	N/A

**SYSTEM HYDRAULIC INFORMATION**

LIGHT HAZARD OCCUPANCY = LOBBY (PER NFPA 13)  
DESIGN AREA = 900 SF (QUICK RESPONSE SPRINKLERS)  
SYSTEM DEMAND =  
SAFETY MARGIN = XX.XX PSI

**SYSTEM HYDRAULIC INFORMATION**

LIGHT HAZARD OCCUPANCY = LOBBY (PER NFPA 13)  
DESIGN AREA = 900 SF (QUICK RESPONSE SPRINKLERS)  
SYSTEM DEMAND =  
SAFETY MARGIN = XX.XX PSI

**SYSTEM HYDRAULIC INFORMATION**

LIGHT HAZARD OCCUPANCY = LOBBY (PER NFPA 13)  
DESIGN AREA = 900 SF (QUICK RESPONSE SPRINKLERS)  
SYSTEM DEMAND =  
SAFETY MARGIN = XX.XX PSI

**Notes**

**Standard Symbols**

- Post Indicator Valve
- Key Operated Valve
- Public Hydrant
- Fire Department Connection
- O. S. & Y. Valve
- Check Valve
- New Underground
- Existing Underground

**Standard Symbols**

- Alarm Check Valve
- Backflow Preventer

**Sprinkler Symbols**

- Residential Pendant
- Residential Sidewall
- Recessed Residential Pendant

**Designed by:**



**FIRE RISK MANAGEMENT, INC.**

Fire Protection Engineers & Code Consultants  
1 Front St., Bath, ME 04530 207-442-7200

Project RMS : W. Mark Cummings, P.E.  
(Maine RMS # 336)

**PROJECT NAME:**

223 WESTERN PROMENAD  
PORTLAND, ME

**Revisions**

**PLAN TYPE:**

FIRE SPRINKLER

NOTES AND DETAILS

SHEET: 1 of 5

OWN BY: JSM

DATE: 12/11/13

CHKD BY:

DATE:

**FX001**