

DRAWING INDEX:

GENERAL:

- G1.0 TITLE SHEET, LOCATION, PROJECT TEAM
- G1.1 GENERAL NOTES & ABBREVIATIONS
- G1.2 LIFE SAFETY DIAGRAMS

ARCHITECTURAL:

- L1.0 SITE PLAN & ROOF PLAN
- D1.1 GROUND FLOOR DEMO PLAN
- D1.2 FIRST FLOOR DEMO PLAN
- A1.0 GROUND FLOOR PLAN
- A1.1 FIRST FLOOR PLAN
- A1.2 SECOND FLOOR PLAN
- A1.3 GROUND/FIRST FLOOR REFLECTED CEILING PLAN

- A2.0 EAST (CHADWICK STREET) ELEVATION
- A2.1 SOUTH ELEVATION
- A2.2 WEST (REAR) ELEVATION

- A3.0 WEST-EAST SECTION/ELEVATION
- A3.1 NORTH-SOUTH SECTION

- A5.0 WINDOW & LATTICE PLANS & ELEVATION DETAILS
- A5.1 WINDOW WALL PLAN DETAILS 1
- A5.2 WINDOW WALL DETAILS 2
- A5.3 WINDOW WALL DETAILS 3
- A5.4 STAIR DETAILS (NOT INCLUDED)
- A5.5 MILLWORK DETAILS (NOT INCLUDED)
- A5.6 DOOR TYPES, DOOR & HARDWARE SCHEDULES

- A6.0 KITCHEN DETAIL PLAN
- A6.1 KITCHEN ELEVATIONS
- A6.2 KITCHEN ELEVATIONS
- A6.3 KITCHEN & LAUNDRY ELEVATIONS

STRUCTURAL:

- S1.0 GENERAL NOTES & ABBREVIATIONS
- S1.1 GROUND FLOOR FRAMING PLAN
- S1.2 FIRST FLOOR FRAMING PLAN
- S1.3 DETAILS

MECHANICAL: (DESIGN BUILD)

- M1.0 HEATING & VENTILATION

ELECTRICAL: (DESIGN BUILD)

- E1.0 GROUND FLOOR POWER & LIGHTING PLAN
- E1.1 FIRST FLOOR POWER & LIGHTING PLAN

PROJECT TEAM

OWNER:

MATTHEW & JULIE FORSYTH
108 WEST STREET, PORTLAND, ME 01605

ARCHITECT:

SCATTERGOOD DESIGN PA
84 MIDDLE STREET, PORTLAND, ME 04101
T (207) 775-6141

STRUCTURAL ENGINEER:

CASCO BAY ENGINEERING
424 FORE STREET
PORTLAND, ME 04101
T: 207-842-2800

GENERAL CONTRACTOR:

TOZIER GROUP BUILDERS
185 MOUNTAIN ROAD, FALMOUTH, ME 04106
T (207) 707-6222

CODE SUMMARY

BUILDING DESIGN CODES:

2009 IBC - INTERNATIONAL BUILDING CODE
2009 IEBC - INTERNATIONAL EXISTING BUILDING CODE
2009 IECC - INTERNATIONAL ENERGY CONSERVATION CODE
2011 - NATIONAL ELECTRICAL CODE (NFPA 70)
NFPA 101 LIFE SAFETY CODE / 2009

OCCUPANCY CLASSIFICATION:

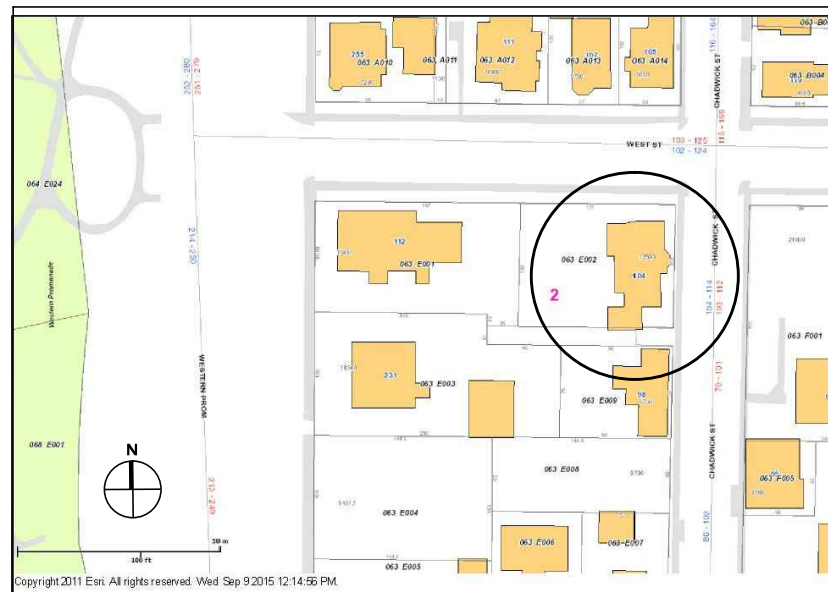
RESIDENTIAL R-3

CONSTRUCTION TYPE: TYPE III

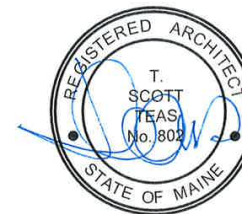
NUMBER OF STORIES: 3 PLUS BASEMENT

104 WEST STREET

PORTLAND, MAINE



PERMIT SET
19 JULY 2016



SCATTERGOOD DESIGN
architecture + planning