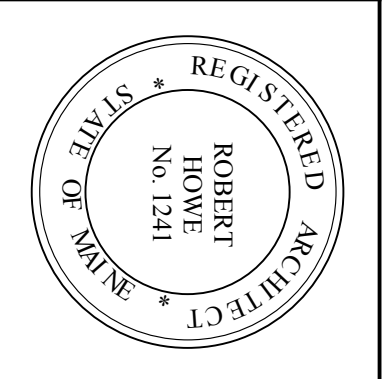
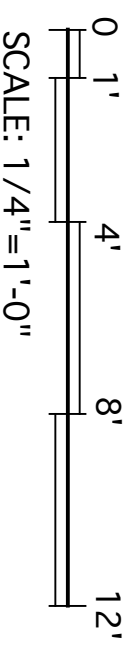
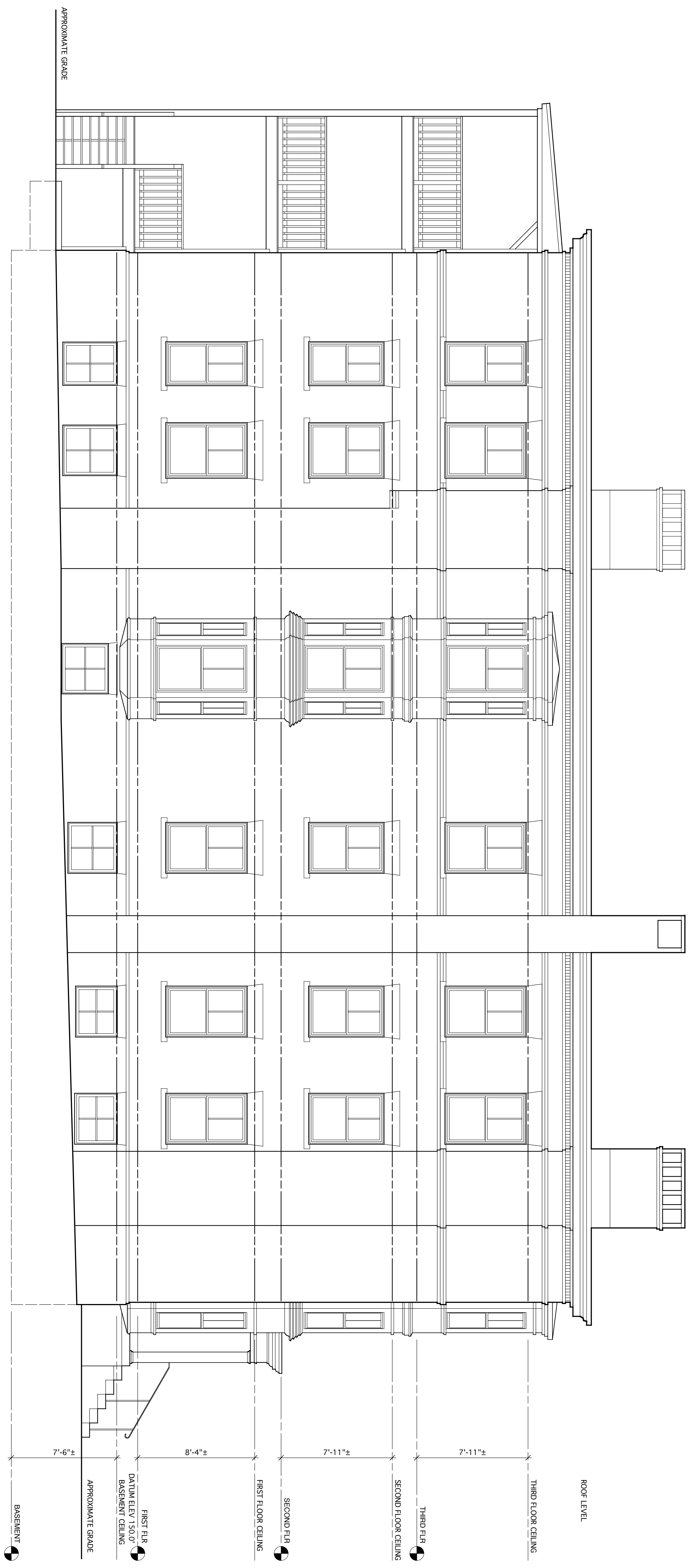


1 NORTH ELEVATION
 Scale: 1/4" = 1'-0"



THIRD VAUGHAN CONDOMINIUM
J.B. BROWN & SONS
 217-219 Vaughan Street, Portland, Maine

HKTA / architects, inc.
 4 Milk Street
 Portland, Maine 04101
HKTA / architects
 phone: 207.774.6016
 fax: 207.774.9128
 e-mail: hkta@aol.com

A2.1
 EXTERIOR ELEVATIONS

DRAWING NO.
 © 2002 HKTA / architects, inc.
 DATE: 1-28-02
 REVISIONS: