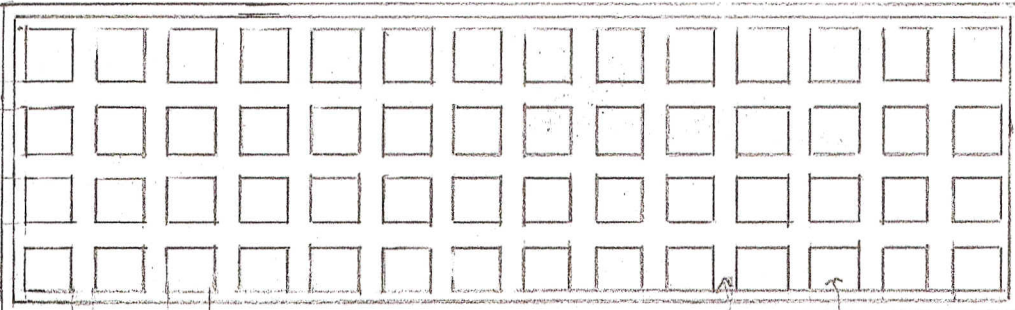


208 VAUGHAN ST.
FRONT PORCH LATTICE
(SIDE VIEW)

BUILDING

↓ 1 1/2"
↑
↓ 3"
↑

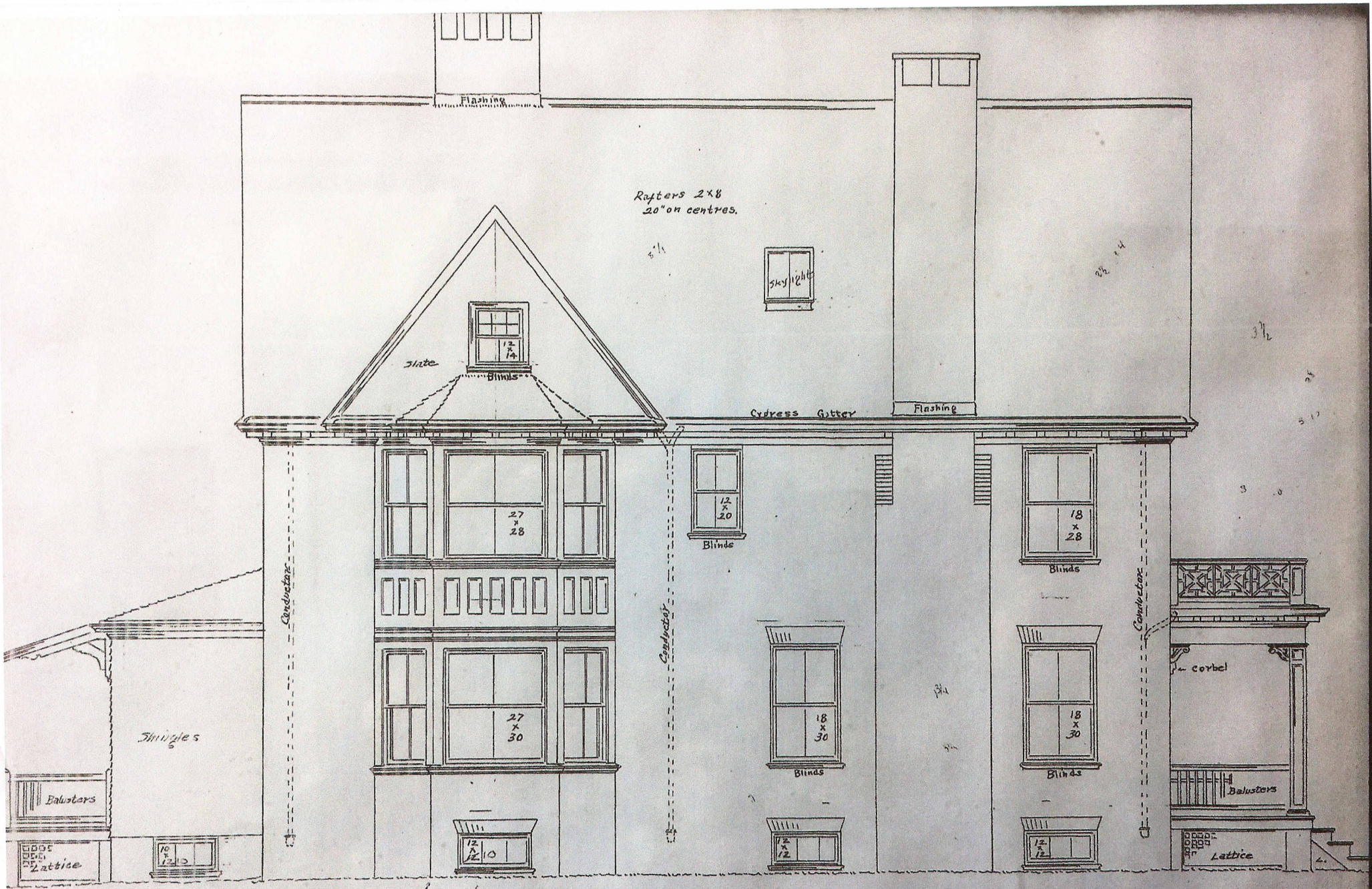


VERTICLE TRIM
UNDER EACH PORCH
POST AS DEPICTED
IN ORIGINAL PLAN

→ ← → ←
1 1/2" 3"

3" x 3" SQUARES
1 1/2" LATTICE

SCALE: 1" = 1'



HOUSE AT PORTLAND, ME.
FOR PHILIP J. DEERING

FRONT SIDE ELEVATION
SCALE $\frac{1}{4}$ inch = 1 foot

John Calvin Stevens
John Howard Stevens