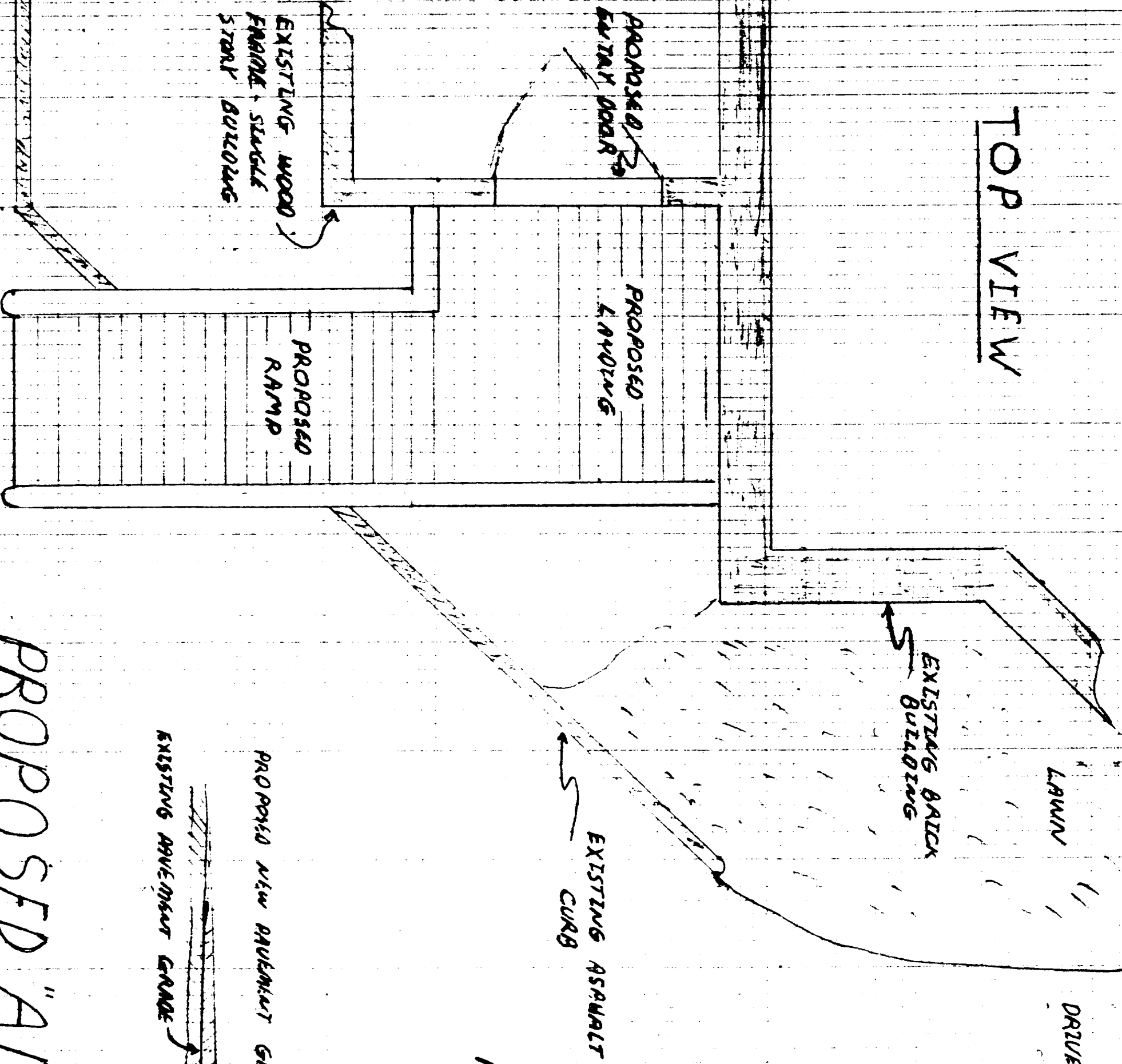
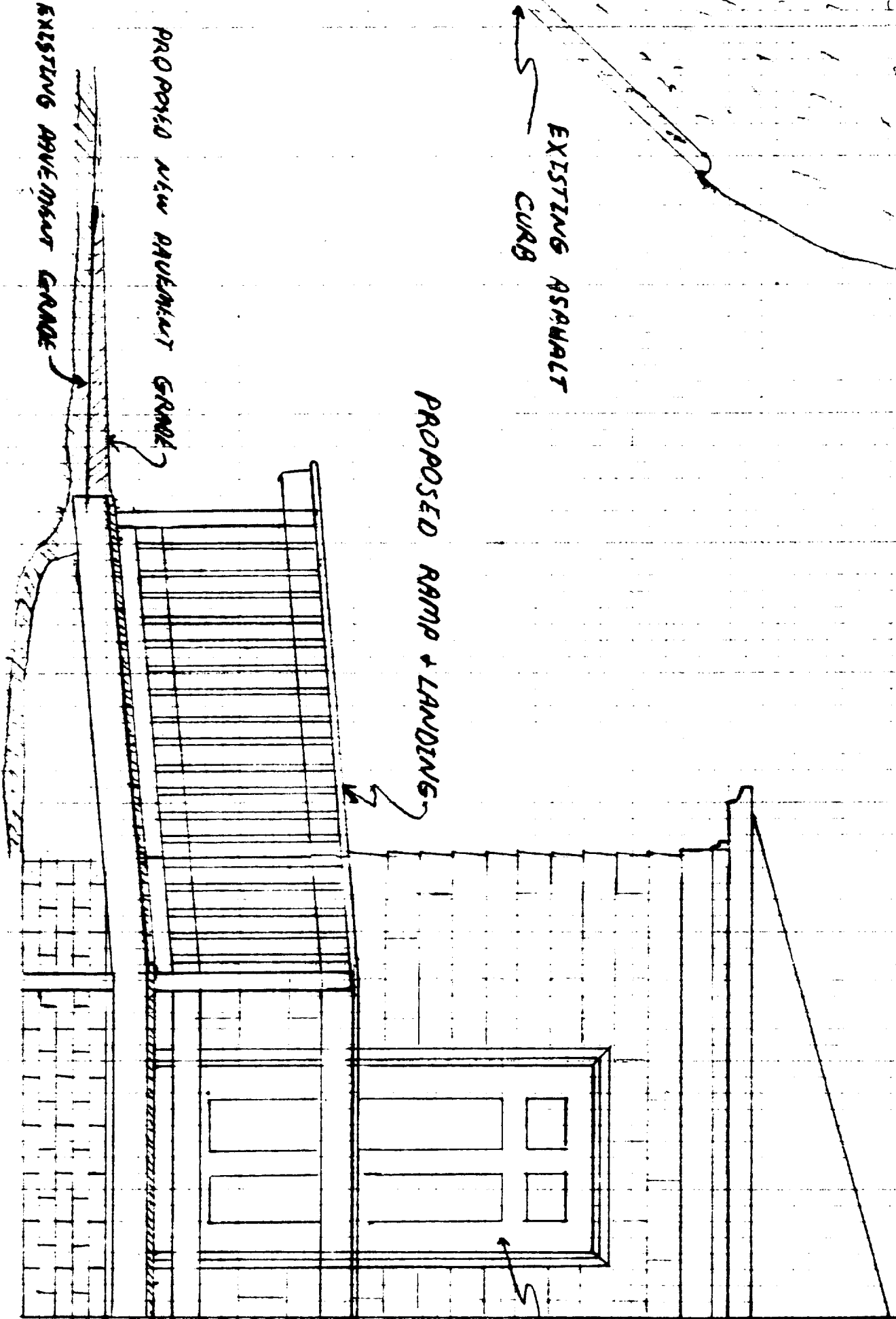


TOP VIEW



SIDE VIEW



PROPOSED "ADA" ACCESS

208-210 VAUGHAN ST

SCALE: 1" = 1'

SIDE OF BUILDING

4" x 4" BOARDS TO BUILDING

3"

11 3/8" 12" 12" 12" 11 3/8"

4' 11 3/8"

~ 7' 6"

5' 0 1/4"

1/4"

ALUMINUM BRACKETS ON AT 4" x 4" BOARDS TO SIDE OF BUILDING

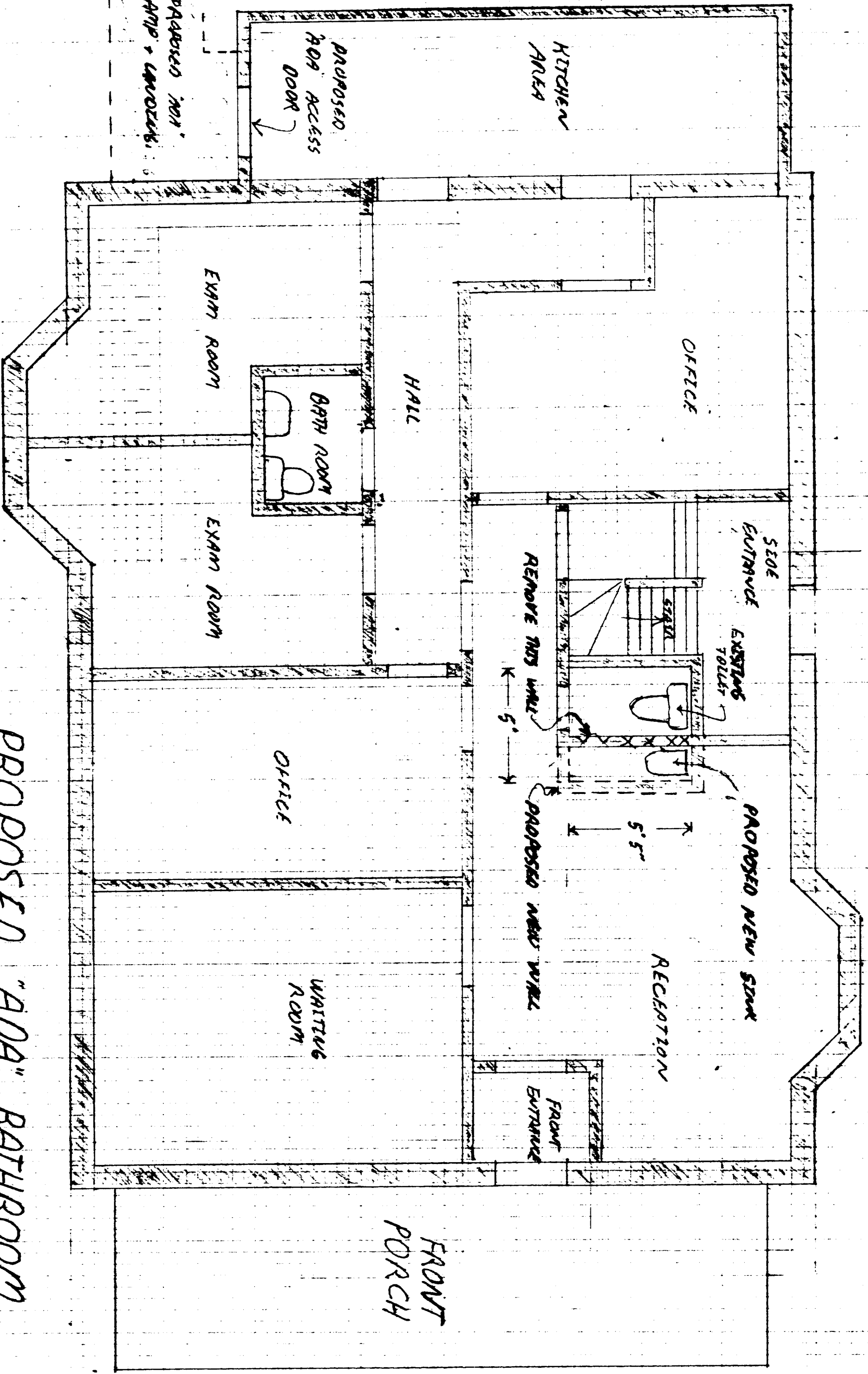
2" x 6" PT
5 RT

2" x 6" PT
5

SIDE OF BUILDING - 2

11 1/4" 10 1/2" 10 1/2" 11 1/4" 43 1/2"

FRAMING DETAIL
"A09" ACCESS RAMP
208-210 VAUGHAN ST?



PROPOSED "ADA" BATHROOM

EXPANSION

208-210 VAUGHAN ST.

SCALE. 1/4" = 1'