

Plans provided by: Jeanné Rapone, CKD  
250 Hillside Street  
Yarmouth, Maine 04096  
207.847.3034  
jrapone@maine.rr.com

February 27, 2006

Dusini Master Bathroom  
212 Vaughn Street  
Portland, ME

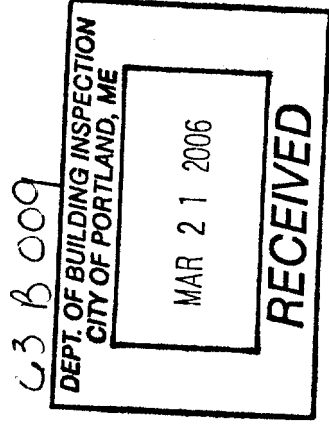
Included in this package:

- Detailed Floor Plan
- Detailed Elevations
- Recommendations and Specifications

Important Note:

Final site measurements are the responsibility of the carpenter, contractor, flooring specialist, plumber, electrician, cabinet manufacturer, and/or millwork specialist. The party supplying the cabinetry, fixtures or fittings is responsible for exact placement of their product. Specific design questions can be directed to Jeanné Rapone, CKD or the homeowner.

All plumbing fixtures should be reviewed with contractor and plumber prior to purchase.



### Specifications for the Dusini Bathroom:

#### Notes:

- Occupy entire small bedroom space as well as existing closet in master bedroom, linen space in hallway and some of the hallway area.
- Relocate door to enter from Master Bedroom.
- Create new large walk-in closet, also entering from Master Bedroom.
- Elevations are an artistic representation of the designer. All details should be reviewed with the homeowner.
- All plumbing fixtures should be reviewed with contractor/plumber prior to final purchase.
- Frameless glass shower to be reviewed with glass installer for exact panel and door sizes available.
- Floor material to be selected and specified.

#### Tub

1. Suggested: Tiled apron front soaking tub or therapeutic tub exact model number to be selected and specified.  
Recommended size is 42 x 66 x 20" maximum depth.  
Recommended: Bain Ultra therapeutic tubs.
2. Tiled deck to run into shower area creating a 45° angled bench. Frameless glass panel would run from the ceiling to the tiled tub deck. Deck approximately 66" wide x 118" long including bench shower area.

#### Shower Area:

1. Tiled shower approximately 42" wide x 69" long with frameless glass door tiled post.
2. Pad wall for insulation of shower water pipes.
3. Shower to include a niche for shampoo, a grab bar, minimum size 24" wide, set approximately 36" AFF. Niche for shampoo should be reviewed with homeowner.
4. Recommended: a handheld showerhead for easy cleaning. Exact model number to be selected and specified.
5. Valve set just inside door opening approximately 36" AFF.

#### Sink Area:

1. Cabinetry: Single Vanity cabinet totaling 54" with a four drawer base approximately 15" wide on either side of a 24" sink base. Exact cabinetry to be selected so depending on how it is built a filler may need to be installed on the left end.
2. Recommended: Single undermount sink set in granite, marble or Corian. Exact model number of sink and countertop to be selected and specified.
3. Recommended: a single lever faucet, exact model number to be selected and specified.
4. Medicine cabinets, drawn size 24" wide x 30" high. Cabinet must be surface mounted.

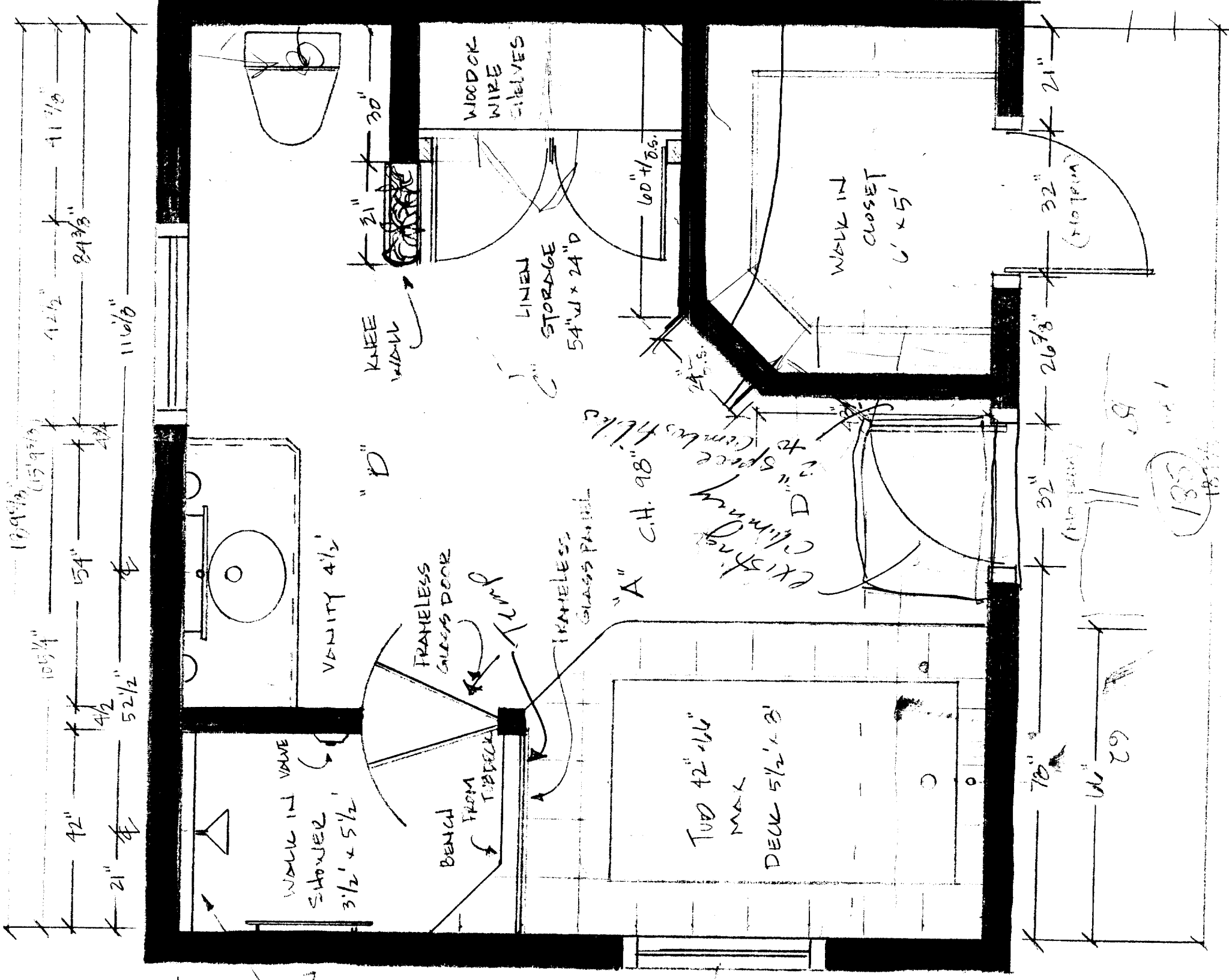
5. Recommended: two light sconces on either side of the medicine cabinet. Size of fixture based on final size of medicine cabinet.

#### Toilet Area:

1. Recommended: New Toto toilet, any model preferred or the Kohler Cimieron.
2. Linen cabinet approximately 54" wide x 24" deep, height to ceiling with two narrow doors approximately 24" wide. Opening up to fixed wood shelves or wire shelves. Final placement of shelves to be reviewed with homeowner.

#### Walk-in Closet:

3. Angled walk-in closet with clothes rod around entire closet. Homeowner may want additional rods for double hanging.



DESIGNER: [Name]  
 1/2" = 10'  
 JEANNE KOPPEL, AIA  
 JANUARY 3, 2006  
 FEB 26, 2006

2x4 - backing  
 100%

