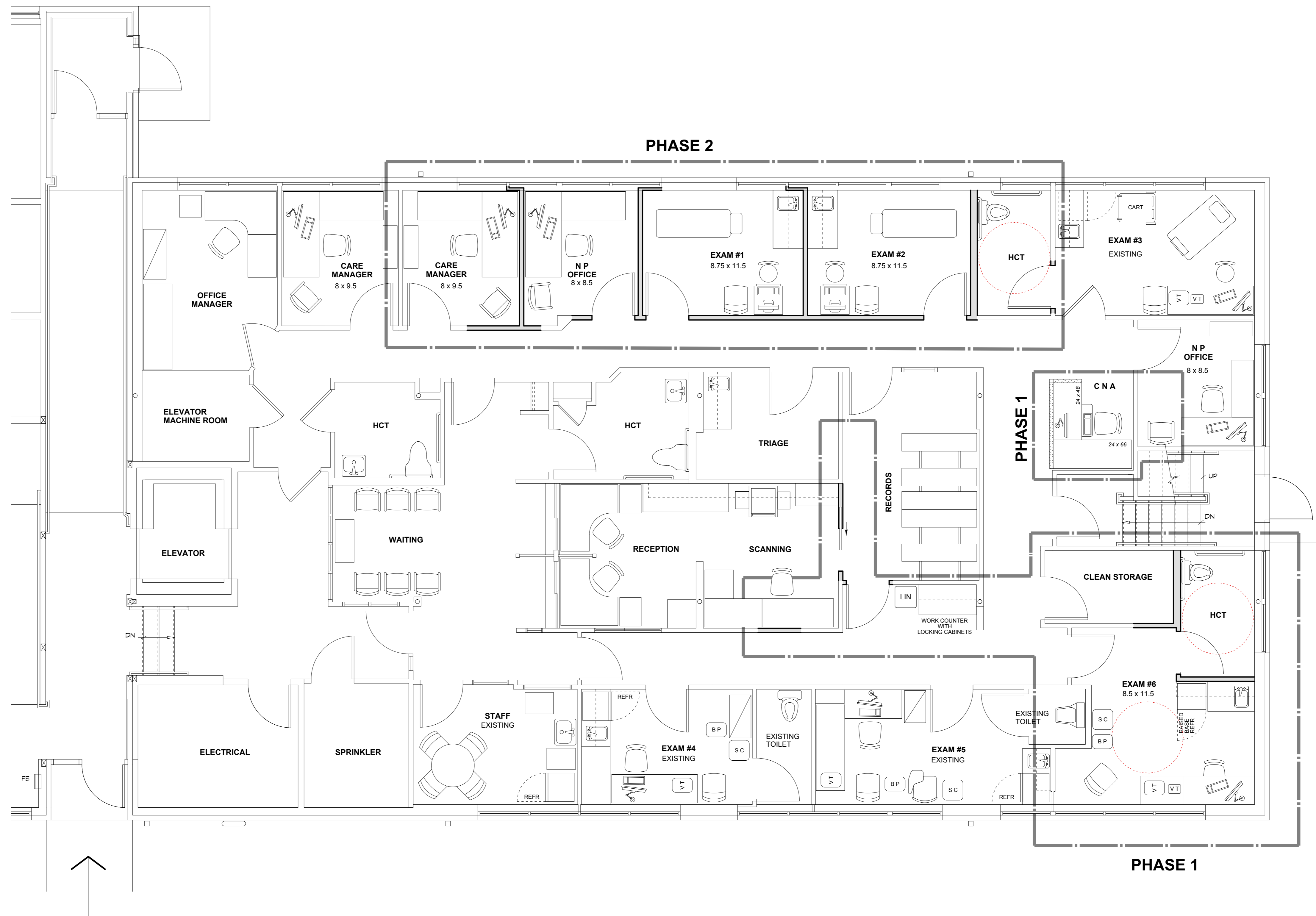
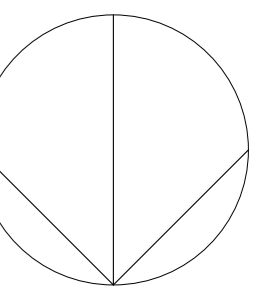
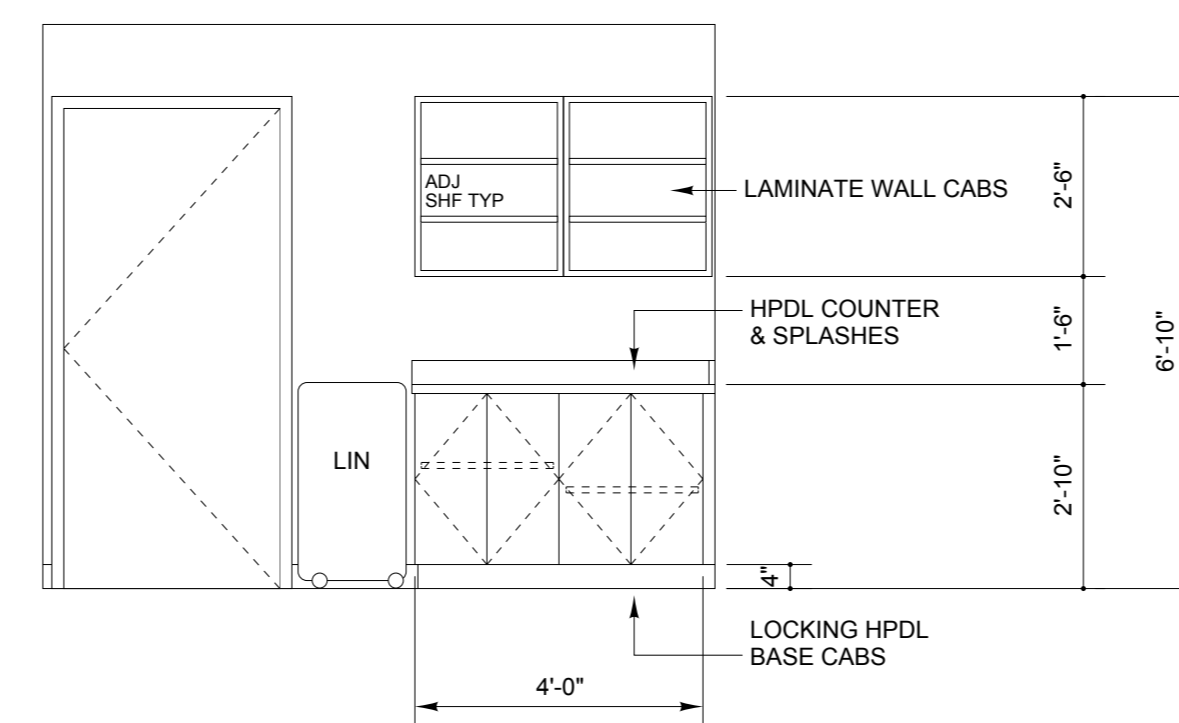


NORTH



Main Entrance



WORK COUNTER ELEVATION

3/8" = 1' - 0"

PROPOSED FLOOR PLAN



LEGEND

- EXISTING PARTITION TO REMAIN
- - - EXISTING PARTITION TO BE REMOVED
- PROPOSED PARTITION

Maine Medical Center

Employee Health Renovations

7 Bramhall Street
 Portland, Maine

Contractor Walk-Through
 August 14, 2012

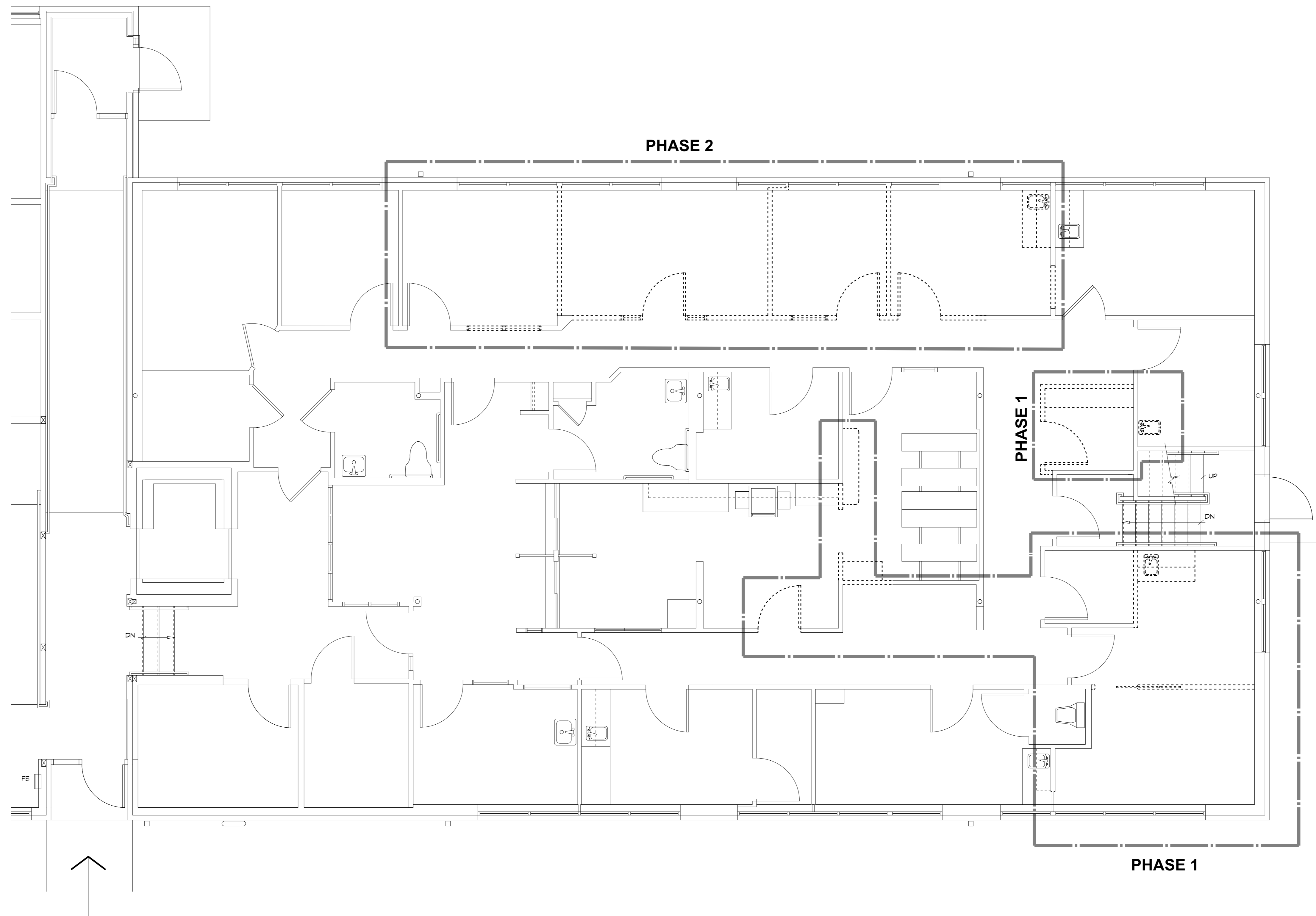
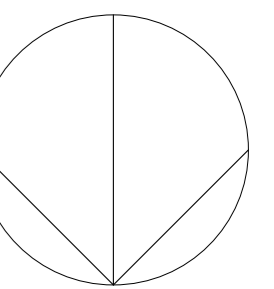
First Floor Plan
 1/4" = 1' - 0"



Winton Scott Architects
 5 Milk Street
 Portland, Maine 04101
 207 774 4811
 www.wintonscott.com

Architecture / Planning
 Preservation Architecture
 Interior Architecture

NORTH



Main Entrance

DEMOLITION PLAN



LEGEND

- EXISTING PARTITION TO REMAIN
- EXISTING PARTITION TO BE REMOVED
- PROPOSED PARTITION

Maine Medical Center

Employee
 Health
 Renovations

7 Bramhall Street
 Portland, Maine

Contractor Walk-Through
 August 14, 2012

Demolition Plan
 1/4" = 1' - 0"

D 101