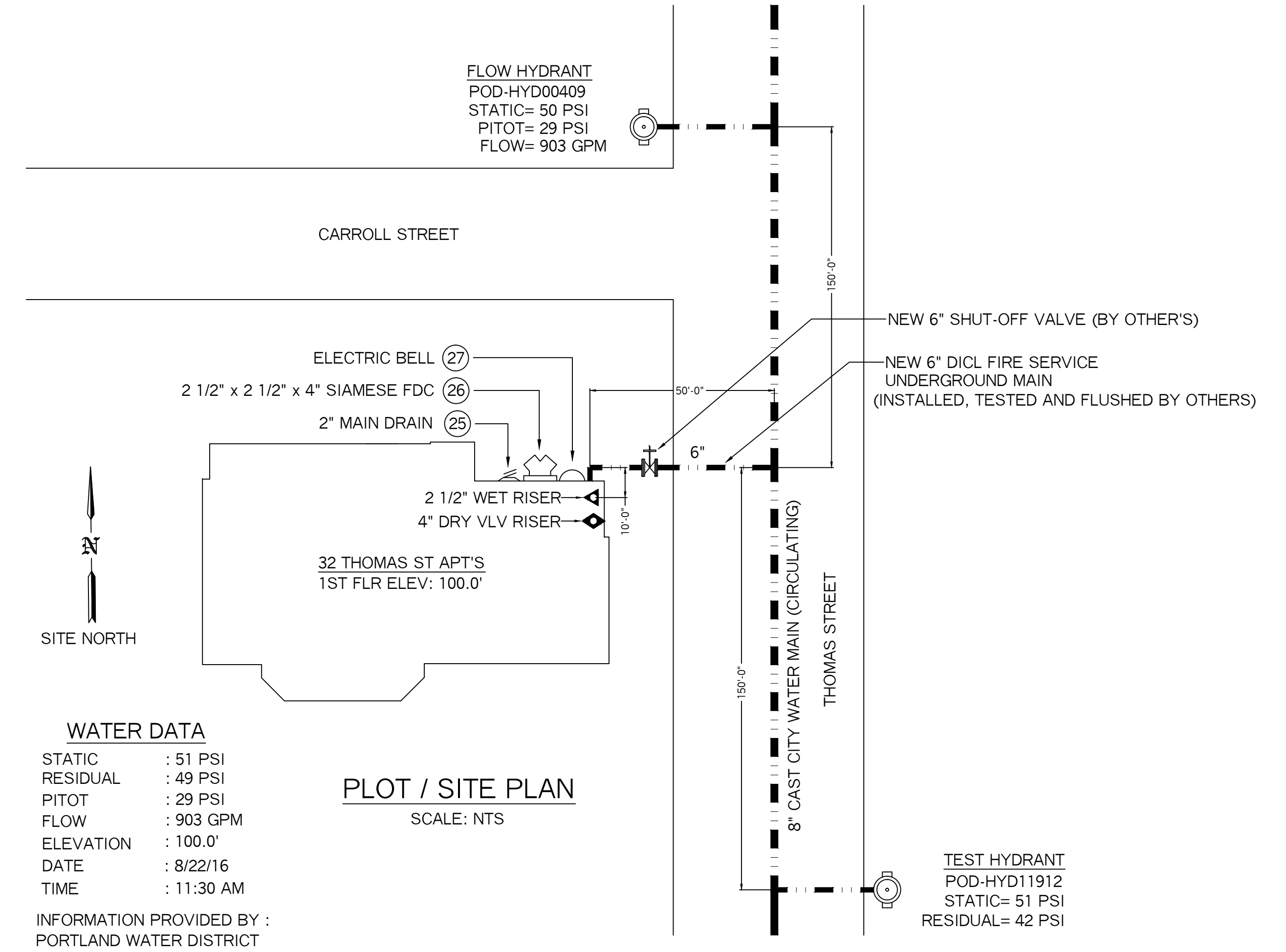


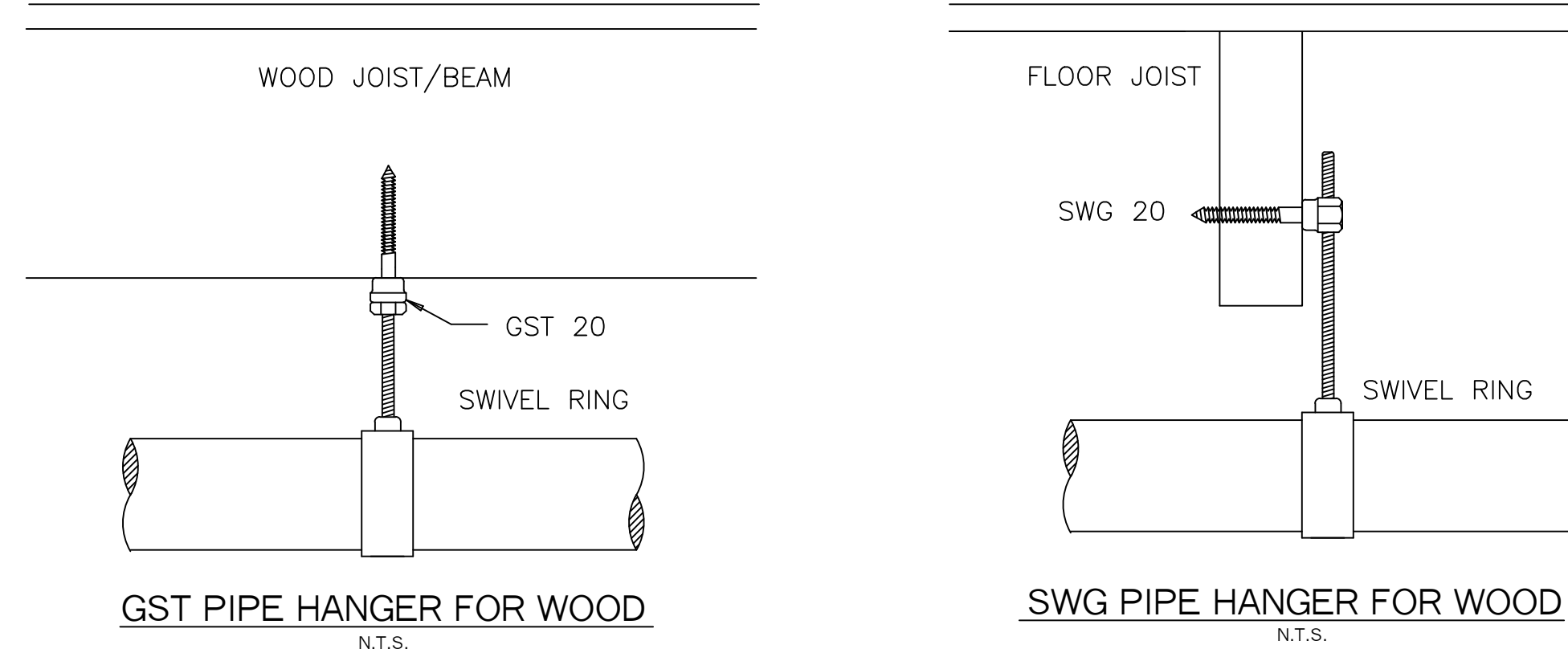
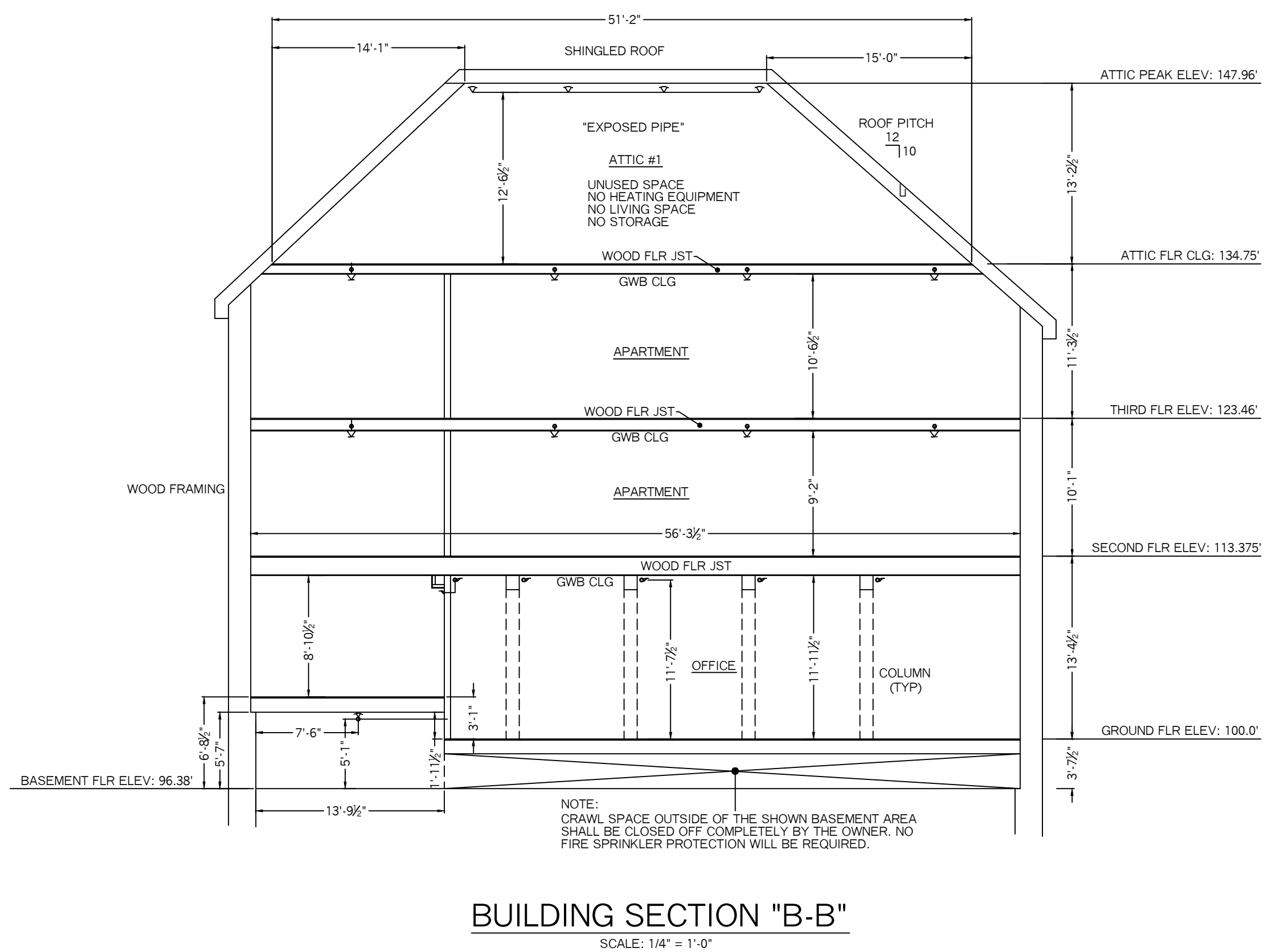
- VALVE RISER LEGEND**
- ① 6" DI CL U.G. SPIGOT, PLUMB AND LEVEL (BY OTHER'S)
 - ② 6" UNI-FLANGE (BY OTHER'S)
 - ③ 4" x 11" COMPANION FLANGE
 - ④ 4" FILLER PC
 - ⑤ 4" BUTTERFLY VLV W/ TAMPER SWITCH (N.O.)
 - ⑥ 4" AMES COLT "C200" DC BFP
 - ⑦ 2 1/2" BUTTERFLY VALVE WITH TAMPER SWITCH (N.O.)
 - ⑧ POTTER VSR-2 1/2" VANE TYPE FLOWSWITCH
 - ⑨ WATER PRESSURE GAUGE (3.5" DIA.)
 - ⑩ 1 1/4" TEST-N-DRAIN VALVE WITH RELIEF VALVE (7/16" TEST ORIFICE) (N.C.)
 - ⑪ PIPE STAND
 - ⑫ 4" GROOVED BUTTERFLY VALVE WITH TAMPER SWITCH (N.O.)
 - ⑬ 4" DRY PIPE VALVE
 - ⑭ POTTER PS-10 PRESSURE SWITCH
 - ⑮ 1/3 HP GAST AIR COMPRESSOR, 120V DEDICATED CIRCUIT BREAKER
 - ⑯ 1/4" BY-PASS LINE WITH VALVE (N.O.)
 - ⑰ 1/2" AIR LINE SHUT-OFF VALVE (N.C.)
 - ⑱ 1/2" AIR LINE CHECK VALVE
 - ⑲ COMPRESSOR ON-OFF SWITCH
 - ⑳ LOW AIR SWITCH, 20-40
 - ㉑ AIR GAUGE
 - ㉒ SPARE HEAD BOX, 6 HD CAPACITY W/ WRENCH
 - ㉓ GALV. 45 ELBOW W/ GALV. GRINNELL PLATE (MAIN DRAIN)
 - ㉔ 2 1/2" x 2 1/2" x 4" SIAMESE FDC W/ WALL PLATE, CAP & CHAIN SEE MAIN FLR PLAN FOR LOCATION
 - ㉕ ELECTRIC BELL, 6" DIA., WITH BACKBOX, DEDICATED CIRCUIT POWER (MOUNTED TO OUTSIDE BY OTHERS)
 - ㉖ 4" CHECK VALVE W/ 1/2" AUTO BALL DRIP
 - ㉗ PRESSURE RELIEF VALVE, SET TO 10 PSI HIGHER THAN SYSTEM AIR
 - ㉘ 2" MAIN DRAIN VLV, PIPE TO OUTSIDE AIR



WATER DATA

STATIC : 51 PSI
 RESIDUAL : 49 PSI
 PITOT : 29 PSI
 FLOW : 903 GPM
 ELEVATION : 100.0'
 DATE : 8/22/16
 TIME : 11:30 AM

INFORMATION PROVIDED BY :
 PORTLAND WATER DISTRICT



WET SYSTEM NOTES:

SYSTEM DESIGNED AND INSTALLED PER THE REQUIREMENTS OF NFPA 13 2016 EDITION, STATE AND LOCAL CODES.

WET SYSTEM TO BE INSTALLED IN THE BASEMENT, FIRST FLOOR, SECOND FLOOR AND THIRD FLOOR.

LINE PIPING TO BE BLACK SCHEDULE 40 STEEL WITH THREADED ENDS, CONNECTED WITH DUCTILE-IRON FITTINGS.

MAIN PIPING TO BE BLACK SCHEDULE 10 STEEL WITH GROOVED END, CONNECTED WITH GROOVED FITTINGS AND COUPLINGS.

PIPE TO BE CONCEALED WHERE POSSIBLE, ALTHOUGH THERE WILL BE SOME AREA'S WITH EXPOSED PIPE DUE TO STRUCTURAL FRAMING.

DRY SYSTEM NOTES:

SYSTEM DESIGNED AND INSTALLED PER THE REQUIREMENTS OF NFPA 13 2016 EDITION, STATE AND LOCAL CODES.

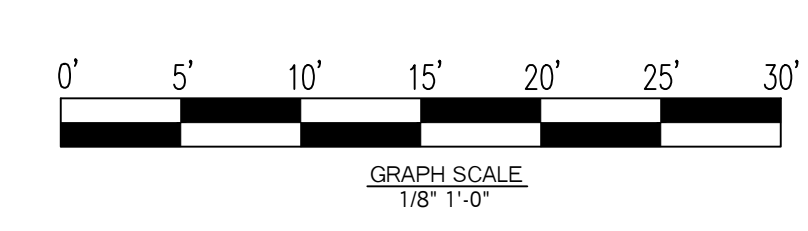
DRY SYSTEM TO BE INSTALLED IN THE ATTIC SPACES ONLY.

1/2" BRASS UPRIGHTS (5.6K) ON LINE

PITCH PIPE IN ACCORDANCE WITH NFPA 13, CHAPTER 1, SECTION 1.2.3.4 MAIN PIPE= 1/4" PER 10'-0" RUN, LINE PIPING= 1/2" PER 10'-0" RUN

MAIN PIPING TO BE BLACK SCHEDULE 10 STEEL WITH GROOVED END, CONNECTED WITH GROOVED FITTINGS AND COUPLINGS.

LINE PIPING TO BE BLACK SCHEDULE 40 STEEL WITH THREADED ENDS, CONNECTED WITH DUCTILE-IRON FITTINGS.



- SYSTEM SYMBOL LEGEND:**
- BR3 = HYDRAULIC CALC REF PT
 - ⊥ = DRAIN VALVE
 - ⊕ = PLUG
 - ⊞ = GRVD COUPLING
 - ⊞ = ADAPTER
 - ⊞ = GROOVED CAP
 - ▶ = WET SHOT-GUN RISER
 - ◀ = DRY PIPE VLV RISER
 - N.O. = NORMALLY OPEN
 - N.C. = NORMALLY CLOSED
 - N.I.C. = NOT IN CONTRACT

PROJECT NAME: THOMAS STREET APARTMENTS 32 THOMAS STREET PORTLAND, ME. 04101	FIRE SPRINKLER PLANS AND DETAILS REQUIRED APPROVALS: STATE FIRE MARSHALS OFFICE LOCAL FIRE DEPARTMENT	RESIDENTIAL FIRE PROTECTION, LLC
CONTRACT WITH: GREAT FALLS CONSTRUCTION 20 MECHANICS STREET GORHAM, ME. 04038 CELL PH: (207) 839-2744	OWNER: DRAWN BY: TPP NICET III CERTIFICATION # 100854	DATE: 8-25-2016
RESIDENTIAL FIRE PROTECTION 64 DAGGETT HILL ROAD, GREENE, MAINE 04236 PH: (207) 946-3473 FAX: (207) 946-3474	CHECKED BY: SJC NICET III (108854) CERTIFICATION # 78065 CONTRACTOR LICENSE #511 CONTRACTOR RMS #80	SCALE: 1/8" = 1'-0" CONTRACT NO. C16021 DRAWING NO. 2 OF 2