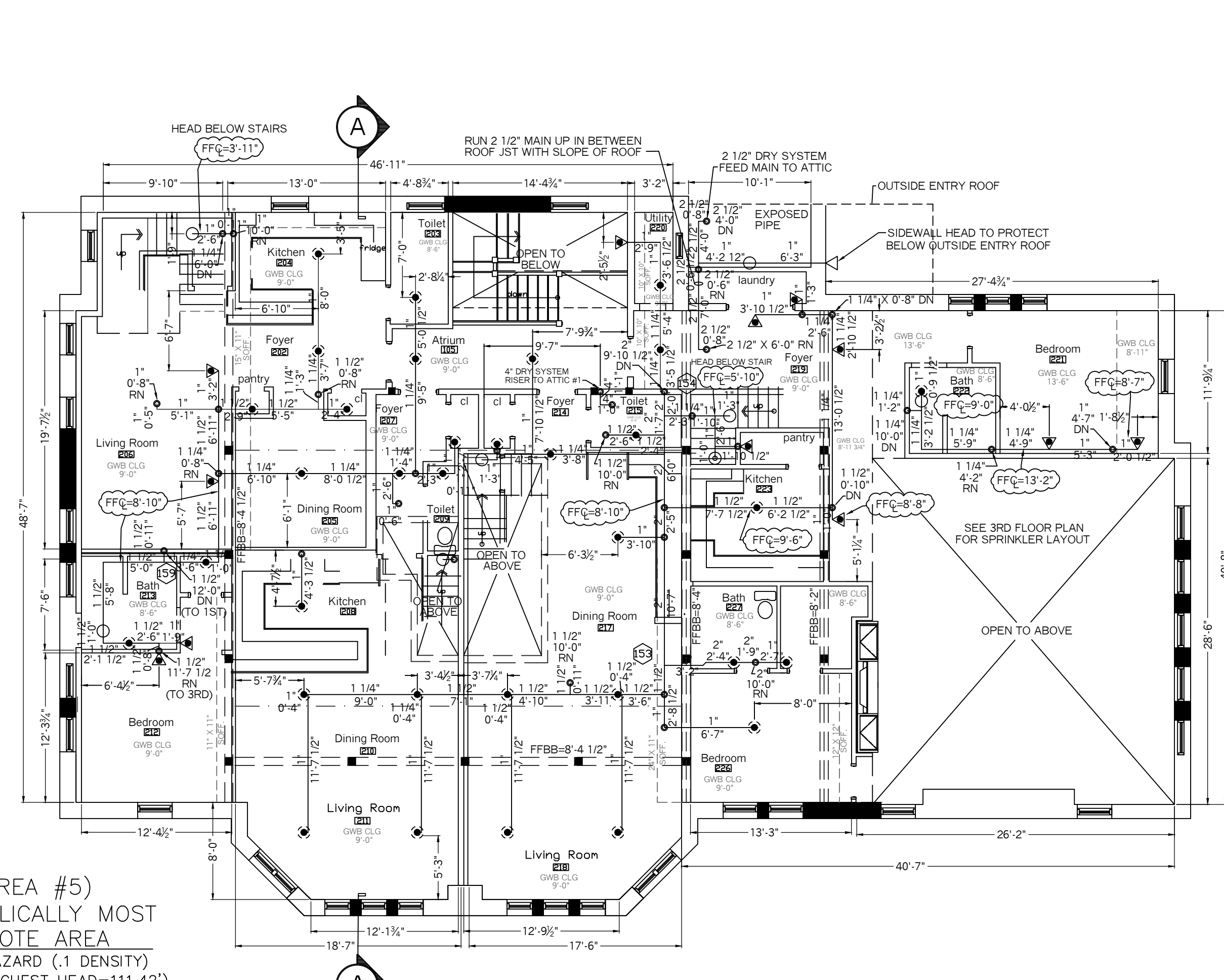
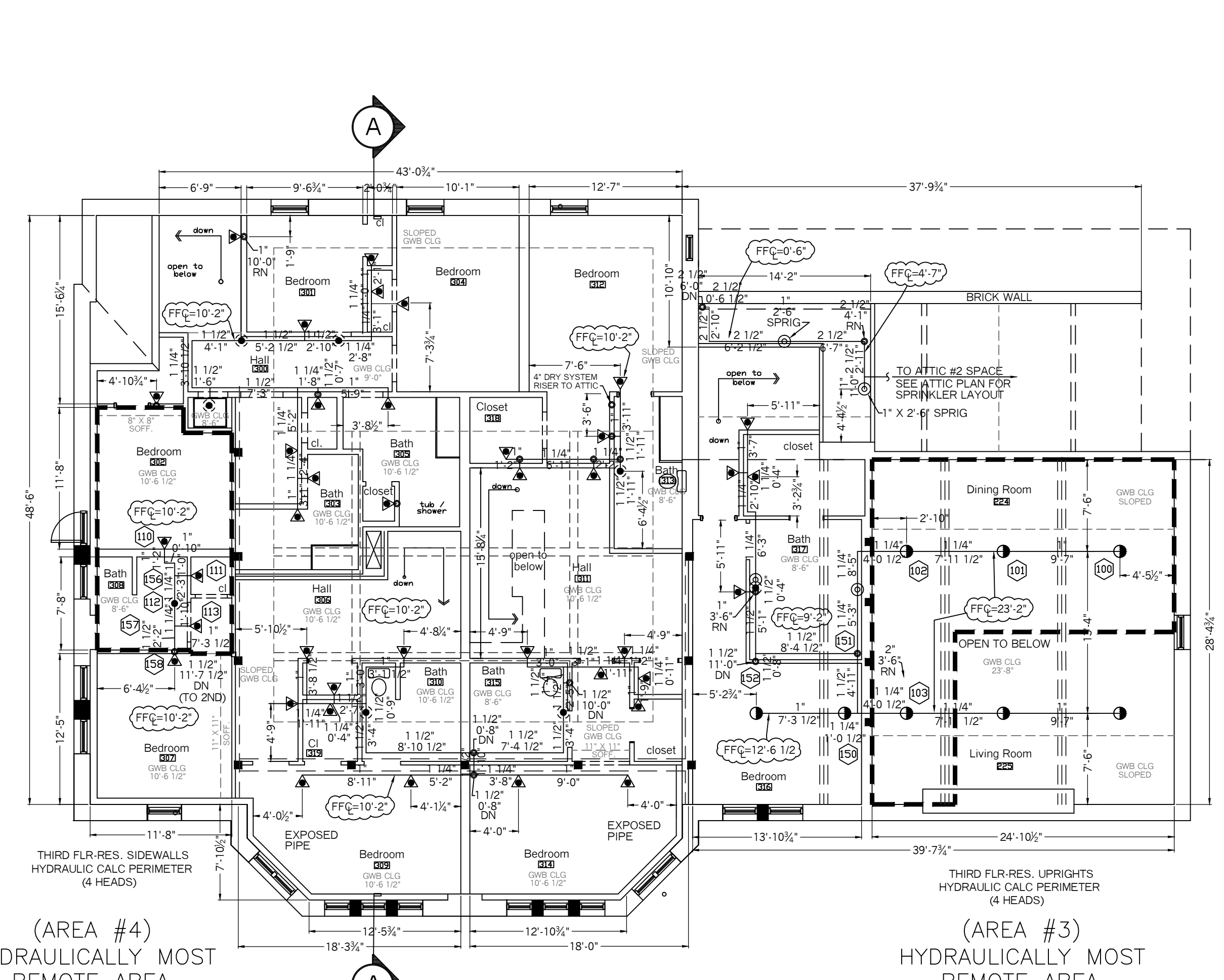


AREA #6
HYDRAULICALLY MOST REMOTE AREA
LIGHT HAZARD (.1 DENSITY)
(ELEV. @ HIGHEST HEAD=111.625')
FIRST FLOOR PLAN
SCALE: 1/8" = 1'-0"
FLR ELEV: 100.0'
TOTAL FLR AREA= 8,427 SF



AREA #5
HYDRAULICALLY MOST REMOTE AREA
LIGHT HAZARD (.1 DENSITY)
(ELEV. @ HIGHEST HEAD=111.42')
SECOND FLOOR PLAN
SCALE: 1/8" = 1'-0"
FLR ELEV: 113.375'
TOTAL FLR AREA= 8,427 SF



AREA #4
HYDRAULICALLY MOST REMOTE AREA
LIGHT HAZARD
(ELEV. @ HIGHEST HEAD=133.63')
THIRD FLOOR PLAN
SCALE: 1/8" = 1'-0"
FLR ELEV: 123.460'
TOTAL FLR AREA= 3,833 SF

AREA #3
HYDRAULICALLY MOST REMOTE AREA
LIGHT HAZARD
(ELEV. @ HIGHEST HEAD=136.55')
THIRD FLOOR PLAN
SCALE: 1/8" = 1'-0"
FLR ELEV: 123.460'
TOTAL FLR AREA= 3,833 SF

SPRINKLER HEAD INFORMATION, FOR THIS FLOOR ONLY

QTY	SIZE	ORIFICE	K-FACTOR	DESCRIPTION	MODEL	TEMP	ESCUTCHEON	SYMBOL
21	1/2"	1/2"	5.6	VIKING WHITE "QR" SIDEWALL	VK305	155	NONE	◁
8	1/2"	1/2"	5.6	VIKING BRASS "QR" UPRIGHT	VK300	200	NONE	○
4	1/2"	1/2"	5.6	VIKING WHITE "QR" PENDENT	VK302	155	RECESSED	⊙
4	1/2"	7/16"	4.0	VIKING WHITE RESIDENTIAL SIDEWALL	VK486	155	RECESSED	◁
10	1/2"	7/16"	4.9	VIKING WHITE RESIDENTIAL PENDENT	VK468	155	NONE	⊙
4	3/4"	3/4"	8.0	VIKING EX. COVERAGE "QR" S.W.	VK606	155	NONE	◁

TOTAL HD'S= 51

SPRINKLER HEAD INFORMATION, FOR THIS FLOOR ONLY

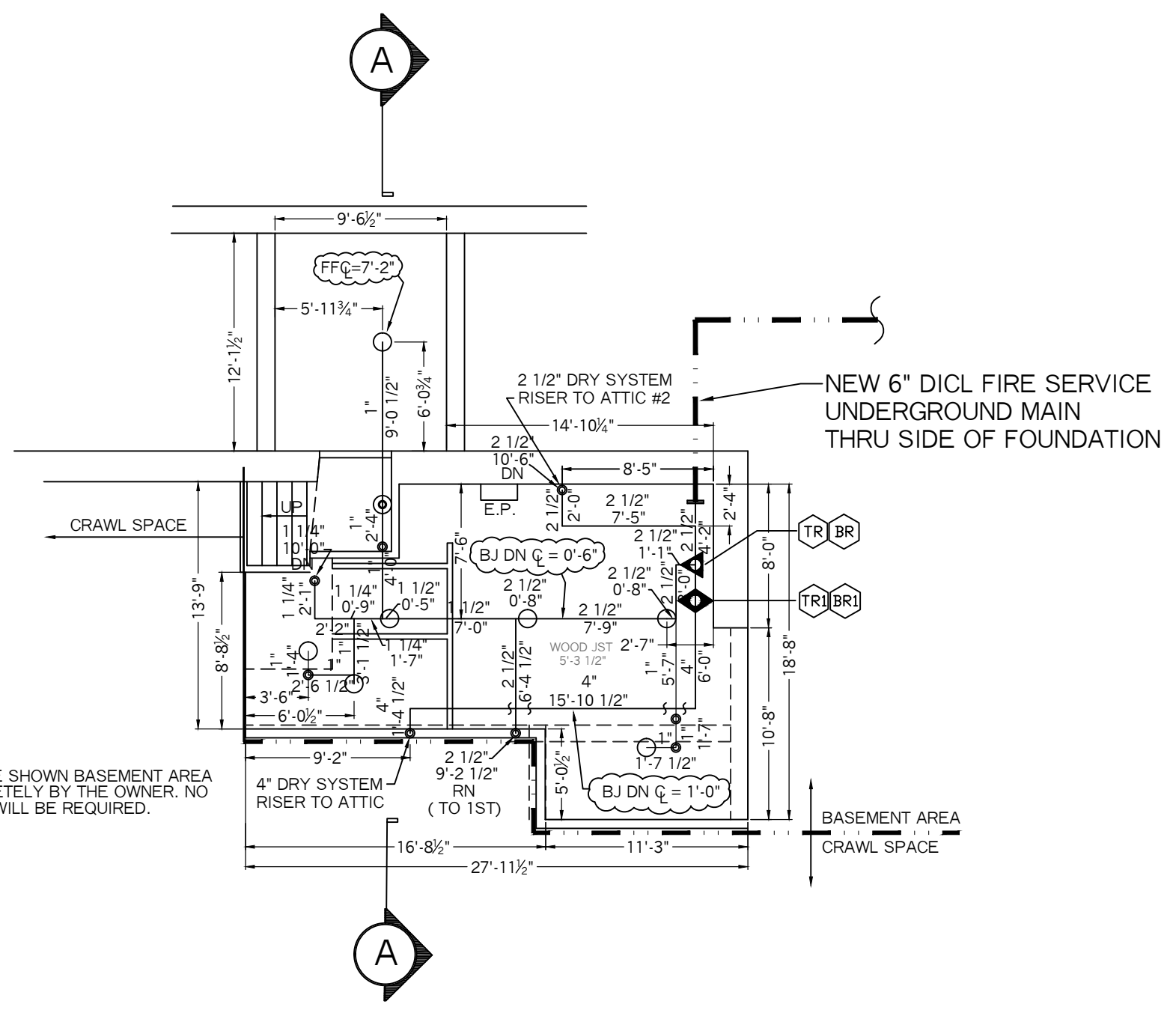
QTY	SIZE	ORIFICE	K-FACTOR	DESCRIPTION	MODEL	TEMP	ESCUTCHEON	SYMBOL
8	1/2"	1/2"	5.6	VIKING BRASS "QR" UPRIGHT	VK300	200	NONE	○
10	1/2"	7/16"	4.0	VIKING WHITE RESIDENTIAL SIDEWALL	VK486	155	RECESSED	◁
30	1/2"	7/16"	4.9	VIKING WHITE RESIDENTIAL PENDENT	VK468	155	RECESSED	⊙

TOTAL HD'S= 48

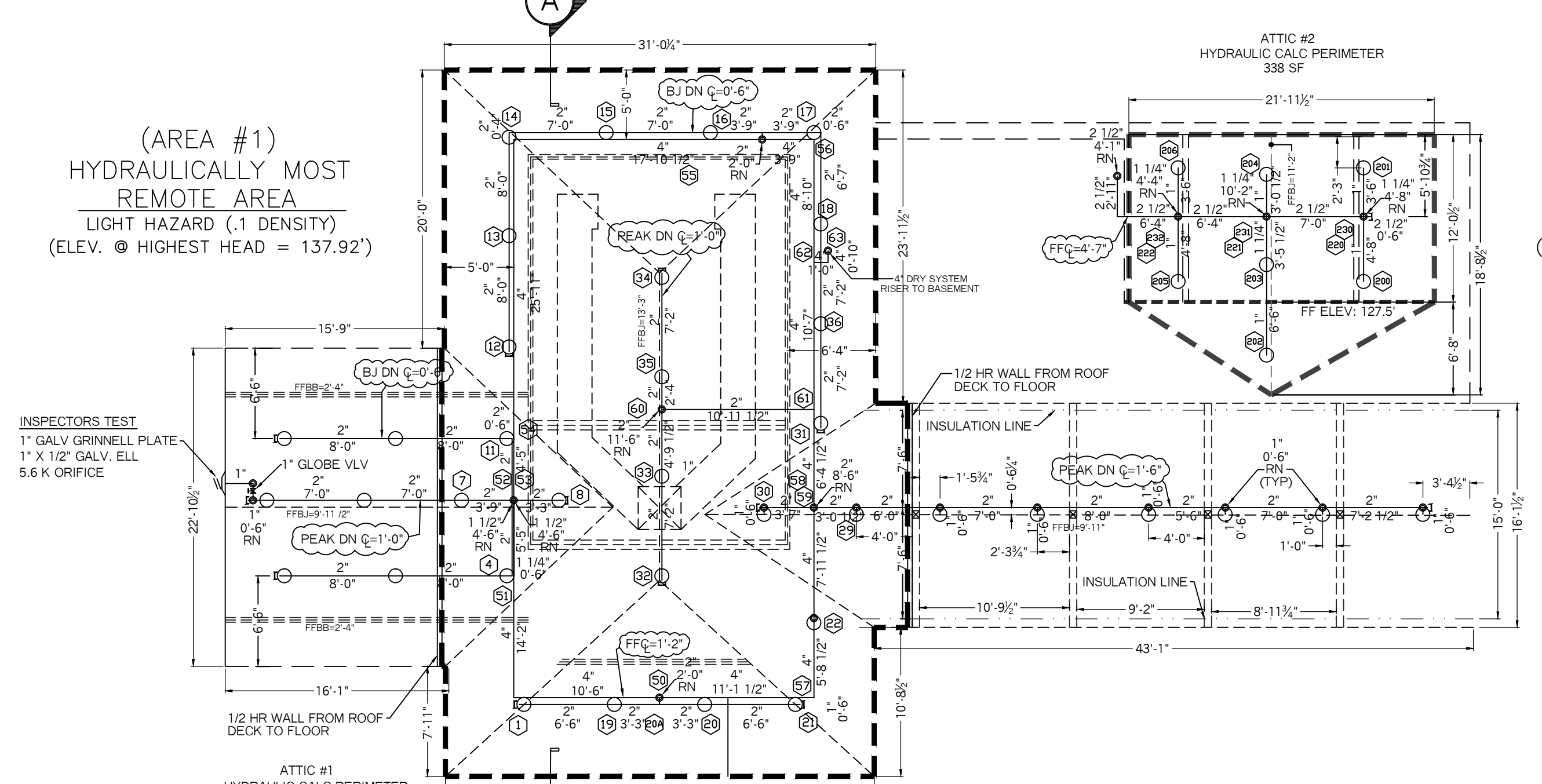
SPRINKLER HEAD INFORMATION, FOR THIS FLOOR ONLY

QTY	SIZE	ORIFICE	K-FACTOR	DESCRIPTION	MODEL	TEMP	ESCUTCHEON	SYMBOL
39	1/2"	1/2"	4.9	VIKING WHITE RESIDENTIAL SIDEWALL	VK486	155	RECESSED	◁
8	1/2"	1/2"	4.9	VIKING WHITE RESIDENTIAL UPRIGHT	VK467	155	NONE	○
8	1/2"	7/16"	4.9	VIKING WHITE RESIDENTIAL PENDENT	VK468	155	RECESSED	⊙
8	1/2"	1/2"	5.6	VIKING BRASS UPRIGHT (ON LINE)	VK300	200	NONE	○

TOTAL HD'S= 63



BASEMENT LEVEL PLAN
SCALE: 1/8" = 1'-0"
FLR ELEV: 96.38'
TOTAL FLR AREA= 546 SF



AREA #1
HYDRAULICALLY MOST REMOTE AREA
LIGHT HAZARD (.1 DENSITY)
(ELEV. @ HIGHEST HEAD = 137.92')
ATTIC LEVEL PLAN
SCALE: 1/8" = 1'-0"
FLR ELEV: 134.75'
TOTAL FLR AREA= 1,617 SF

SPRINKLER HEAD INFORMATION, FOR THIS FLOOR ONLY

QTY	SIZE	ORIFICE	K-FACTOR	DESCRIPTION	MODEL	TEMP	ESCUTCHEON	SYMBOL
8	1/2"	1/2"	5.6	VIKING BRASS "QR" UPRIGHT	VK300	155	NONE	○

TOTAL HD'S= 8

SPRINKLER HEAD INFORMATION, FOR THIS FLOOR ONLY

QTY	SIZE	ORIFICE	K-FACTOR	DESCRIPTION	MODEL	TEMP	ESCUTCHEON	SYMBOL
43	1/2"	1/2"	5.6	VIKING BRASS "QR" UPRIGHT	VK300	200	NONE	○

TOTAL HD'S= 43

SYSTEM SYMBOL LEGEND:

- ◁ = WET SHOT-GUN RISER
- = DRY VALVE RISER
- ⊙ = HYDRANT
- ⊞ = GRVD COUPLING
- ⊙ (with H) = HYDRAULIC CALC REF PT
- N.O. = NORMALLY OPEN
- N.C. = NORMALLY CLOSED
- N.I.C. = NOT IN CONTRACT

0' 5' 10' 15' 20' 25' 30'
GRAPH SCALE
1/8" = 1'-0"

LOCATION: ATTIC #1 (DRY SYSTEM)	LOCATION: ATTIC #2 (DRY SYSTEM)	LOCATION: 3RD FLR (RESIDENTIAL UPRIGHTS)	LOCATION: 3RD FLR (RESIDENTIAL SIDEWALLS)	LOCATION: 1ST FLR (E.C. SIDEWALLS)	LOCATION: 1ST FLR (S.S. SIDEWALLS)
HYDRAULIC CALCULATION INFORMATION: BASIS OF DESIGN: NFPA 13, 2016 EDITION: DENSITY: .1 AREA OF COVERAGE: 1954 SF OCCUPANCY: UNUSED ATTIC SPACE SPRINKLERS: TOTAL 24 THRD 1/2" ORIFICE 1/2" TEMP 200 SYSTEM DEMAND AT BASE OF RISER (BOR): PRESSURE 48.52 PSI FLOW 409.24 GPM HOSE 100 SAFETY MARGIN: 2.14 PSI	HYDRAULIC CALCULATION INFORMATION: BASIS OF DESIGN: NFPA 13, 2016 EDITION: DENSITY: .1 AREA OF COVERAGE: 7 HEADS OCCUPANCY: UNUSED ATTIC SPACE SPRINKLERS: TOTAL 7 THRD 1/2" ORIFICE 1/2" TEMP 200 SYSTEM DEMAND AT BASE OF RISER (BOR): PRESSURE 123.29 PSI FLOW 47.1 GPM HOSE 100 SAFETY MARGIN: 4.61 PSI	HYDRAULIC CALCULATION INFORMATION: BASIS OF DESIGN: NFPA 13, 2016 EDITION: DENSITY: .0525 AREA OF COVERAGE: 4 HEADS OCCUPANCY: APARTMENT SPRINKLERS: TOTAL 4 THRD 1/2" ORIFICE 7/16" TEMP 155 SYSTEM DEMAND AT BASE OF RISER (BOR): PRESSURE 48.34 PSI FLOW 56.72 GPM HOSE 100 SAFETY MARGIN: 3.48 PSI	HYDRAULIC CALCULATION INFORMATION: BASIS OF DESIGN: NFPA 13, 2016 EDITION: DENSITY: .0508 AREA OF COVERAGE: 4 HEADS OCCUPANCY: APARTMENT SPRINKLERS: TOTAL 4 THRD 1/2" ORIFICE 7/16" TEMP 155 SYSTEM DEMAND AT BASE OF RISER (BOR): PRESSURE 50.47 PSI FLOW 55.69 GPM HOSE 100 SAFETY MARGIN: 1.36 PSI	HYDRAULIC CALCULATION INFORMATION: BASIS OF DESIGN: NFPA 13, 2016 EDITION: DENSITY: .1 AREA OF COVERAGE: 4 HEADS OCCUPANCY: OFFICE SPACE SPRINKLERS: TOTAL 4 THRD 3/4" ORIFICE 3/4" TEMP 155 SYSTEM DEMAND AT BASE OF RISER (BOR): PRESSURE 49.19 PSI FLOW 132.71 GPM HOSE 100 SAFETY MARGIN: 2.5 PSI	HYDRAULIC CALCULATION INFORMATION: BASIS OF DESIGN: NFPA 13, 2016 EDITION: DENSITY: .1 AREA OF COVERAGE: 9 HEADS OCCUPANCY: OFFICE SPACE SPRINKLERS: TOTAL 9 THRD 1/2" ORIFICE 1/2" TEMP 155 SYSTEM DEMAND AT BASE OF RISER (BOR): PRESSURE 45.41 PSI FLOW 161.91 GPM HOSE 100 SAFETY MARGIN: 6.2 PSI

PROJECT NAME: THOMAS STREET APARTMENTS
32 THOMAS STREET
PORTLAND, ME. 04101

FIRE SPRINKLER PLANS AND DETAILS

STATE FIRE MARSHALS OFFICE: LOCAL FIRE DEPARTMENT

OWNER: GREAT FALLS CONSTRUCTION
20 MECHANICS STREET
GORHAM, ME. 04038
CELL PH: (207) 839-2744

DATE: 8-25-2016

SCALE: 1/8" = 1'-0"

CONTRACT NO.: C16021

DRAWING NO.: 1 OF 2

RESIDENTIAL FIRE PROTECTION
64 DAGGETT HILL ROAD, GREENE, MAINE 04236
PH: (207) 946-3473 FAX: (207) 946-3474