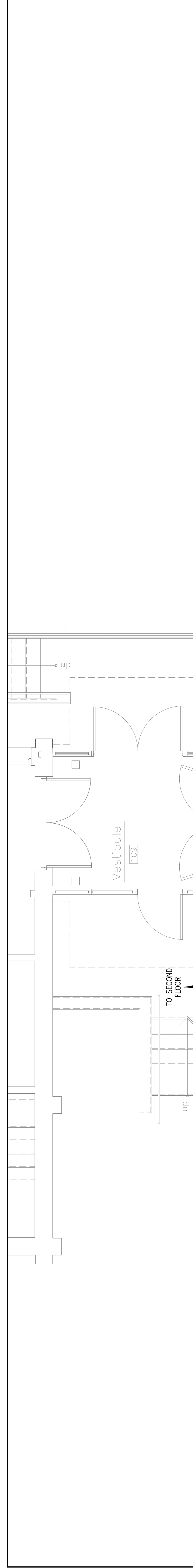


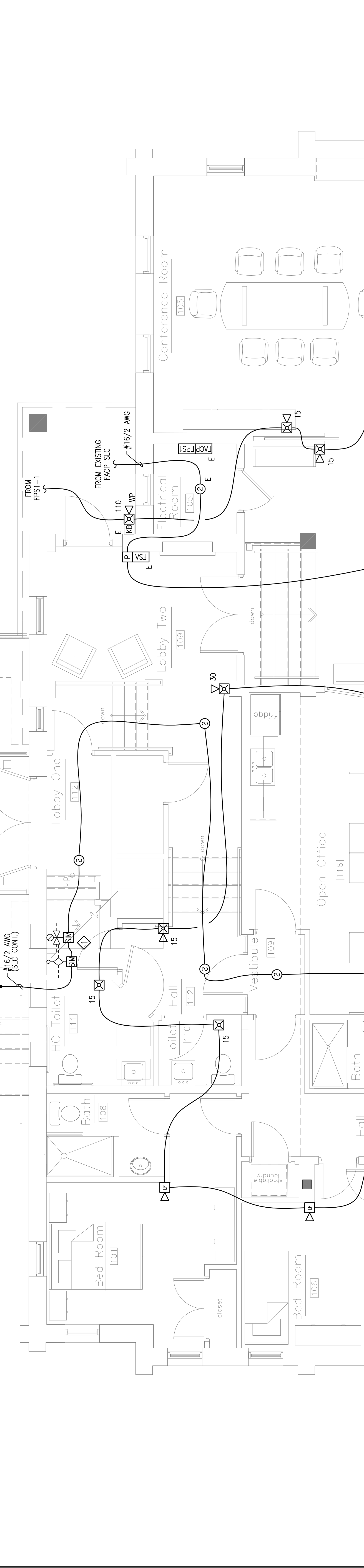
REVISION	DESCRIPTION	DATE
0	ISSUED FOR REVIEW & APPROVAL	4/19/2016
1	REVISED PER FULL SPRINKLER SYSTEM	8/4/2016

RESERVED FOR CITY STAMP



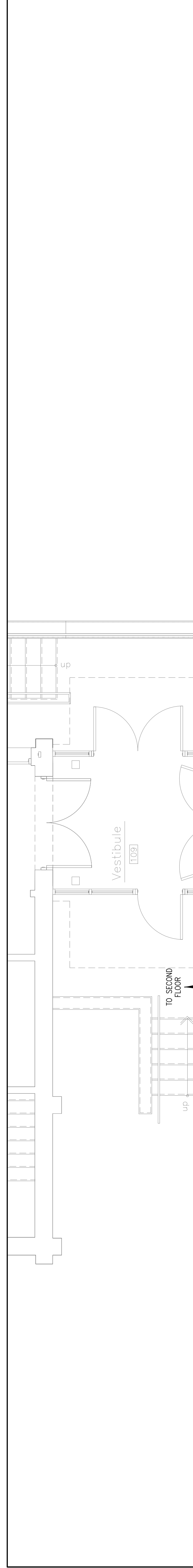
REVISION	DESCRIPTION	DATE
0	ISSUED FOR REVIEW & APPROVAL	4/19/2016
1	REVISED PER FULL SPRINKLER SYSTEM	8/4/2016

RESERVED FOR CITY STAMP



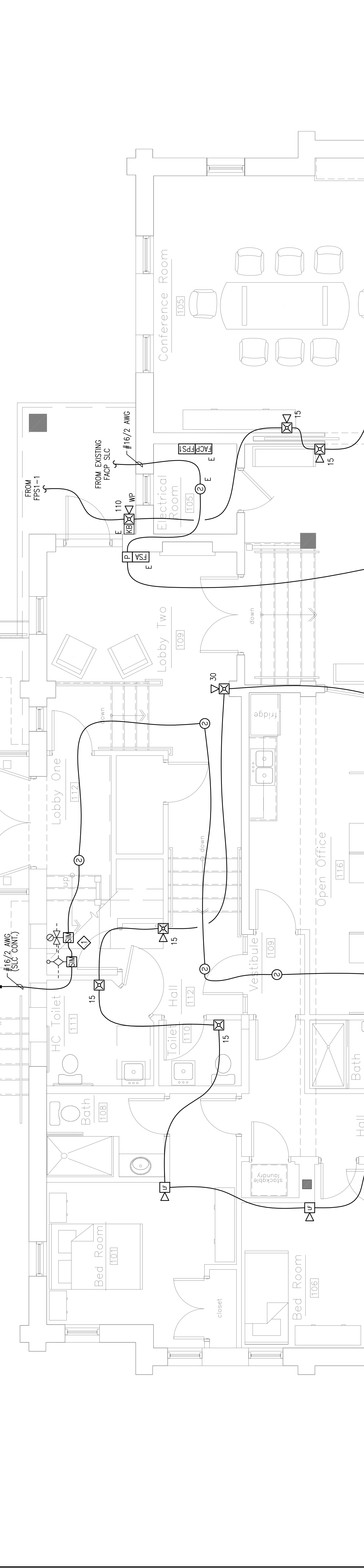
REVISION	DESCRIPTION	DATE
0	ISSUED FOR REVIEW & APPROVAL	4/19/2016
1	REVISED PER FULL SPRINKLER SYSTEM	8/4/2016

RESERVED FOR CITY STAMP



REVISION	DESCRIPTION	DATE
0	ISSUED FOR REVIEW & APPROVAL	4/19/2016
1	REVISED PER FULL SPRINKLER SYSTEM	8/4/2016

RESERVED FOR CITY STAMP



32 THOMAS STREET APARTMENTS  
32 THOMAS STREET  
PORTLAND, MAINE 04102  
GROUND FLOOR FIRE ALARM PLAN

DRAWN	JPB	UNICAD JOB #16190
CHECKED	WAYNE B. HAWES	NCET # 90496
DATE	4/19/2016	
REVISION	1	
SCALE	AS NOTED	

**Security Systems**  
10 Princes Point Road, Yarmouth, Maine 04096  
Office: 207.846.3350 • Fax: 207.846.6080

**CUNNINGHAM**

**UNICAD** Inc.  
Fire Alarm Design & Drafting Services  
www.unicad.net  
578 W. 400 St.  
Portland, ME 04102  
Office: 603.865.6410

**SHEET NOTES:**

- ADDRESSABLE MODULE(S) PROVIDED TO MONITOR ALL WATER FLOW, PRESSURE SWITCHES, TAMPER SWITCHES AND POST INDICATING VALVES ASSOCIATED WITH THE FIRE SPRINKLER SYSTEM. INSTALLING CONTRACTOR SHALL FIELD VERIFY EXACT MOUNTING, CIRCUITING AND PROGRAMMING REQUIREMENTS. FIELD VERIFY EXACT QUANTITY AND LOCATION(S).

**GROUND FLOOR FIRE ALARM PLAN**  
SCALE: 1/4"=1'-0"  
N