

604

5/8" GWB - Type X
3 5/8" Mtl Stds @ 16" OC
SAB
Rating 2 HR
UL 465
STC 55
Jamb TBD

SEE DETAIL CL1, CL3 or CL4 FOR WALL CONST ABOVE CLG

603

1/2" GWB - Type X
3 5/8" Mtl Stds @ 16" OC
SAB
Rating 2 HR
UL 465
STC 55
Jamb TBD

SEE DETAIL CL1, CL3 or CL4 FOR WALL CONST ABOVE CLG

602

1/2" GWB - Type X
2 1/2" Mtl Stds @ 16" OC
SAB
Rating 2 HR
UL 465
STC 63
Jamb TBD

SEE DETAIL CL1, CL3 or CL4 FOR WALL CONST ABOVE CLG

601

3 Layers 1/2" GWB - Type X
3 5/8" Mtl Stds @ 16" OC
SAB
Rating 3HR
UL 419
STC 65
Jamb TBD

SEE DETAIL CL1, CL3 or CL4 FOR WALL CONST ABOVE CLG

103

Porcelain tile
1/2" Cement board
2 x 4 Studs @ 16" OC
SAB
Rating NA
UL N/A
STC 45
Jamb

102

5/8" GWB - Type X
2 x 4 Studs @ 16" OC
SAB
Rating NA
UL N/A
STC 45
Jamb

101

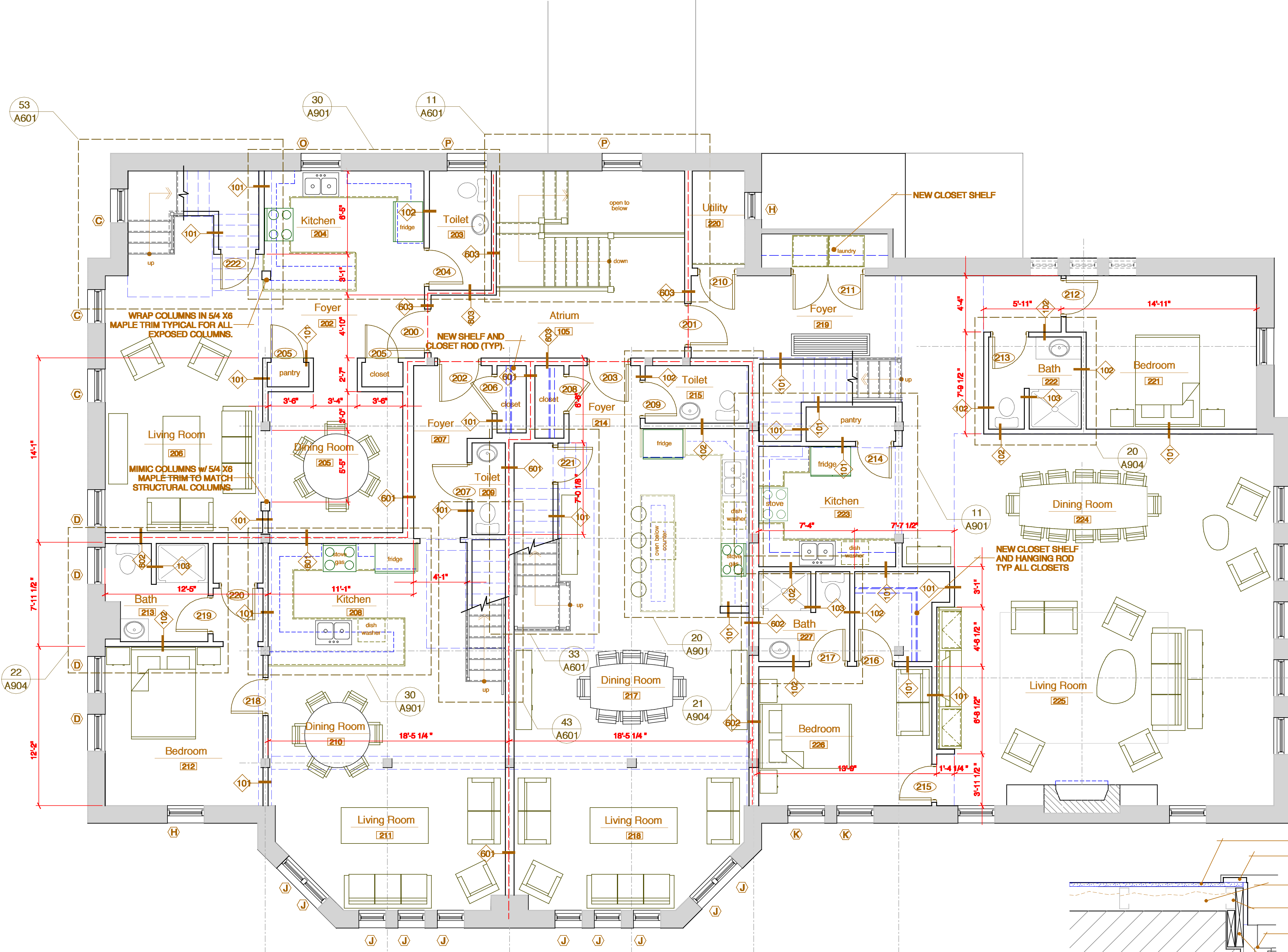
5/8" GWB - Type X
2 x 4 Studs @ 16" OC
SAB
Rating NA
UL 305
STC 45
Jamb

- Partition type designations refer to the following wall construction systems:
100 Series - 2x4 Wood stud construction
600 Series - Metal stud construction
- All GWB to be cut to fit around penetrations, pipes, ducts, conduit, cables, etc.
All penetrations shall be sealed with acoustic sealant, unless noted otherwise.
- All partitions extending to underside of ceiling above shall fully follow the contour of struct.
- All sound insulated partitions shall extend to the underside of structure above, UNO
- All sound insulated partitions shall be sealed with acoustic sealant under the shoe, head, and jamb, and at all GWB joints.
- Refer to Room Finish Schedule for wall finish and base information.

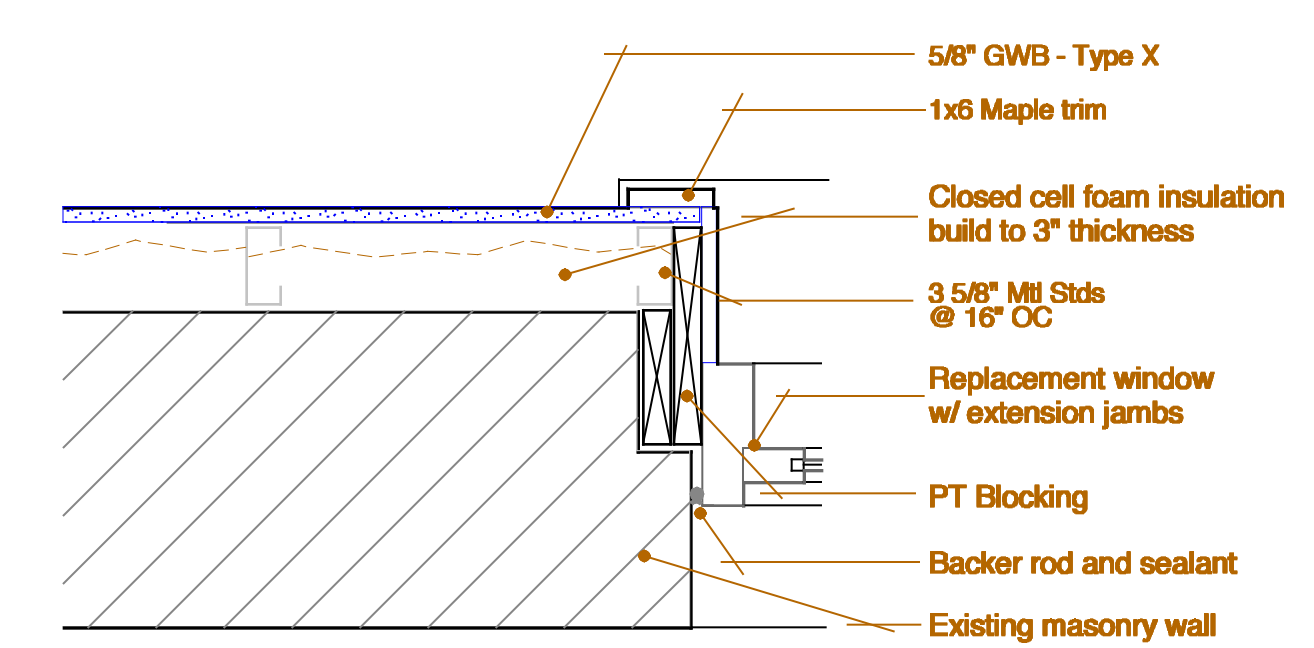
623

Partition type designation
NR (not rated), 1HR, 2HR, 3HR as applicable
Rating NA
UL N/A
STC 45
Jamb

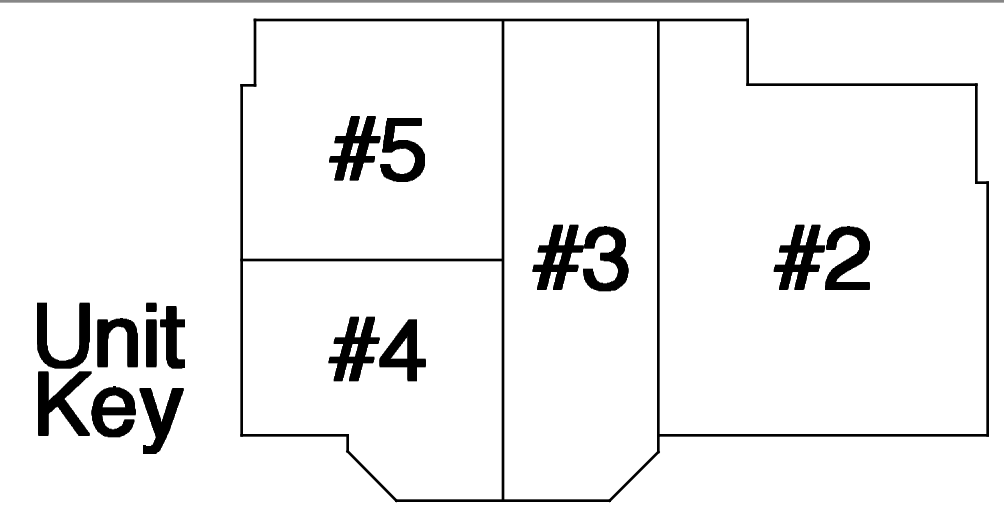
Partition Notes / Legend



10 Second Floor Plan



11 Typical Exterior Wall Detail



Revisions	date
Issued for Pricing	02/29/2016
Issued for Permit	02/22/2016