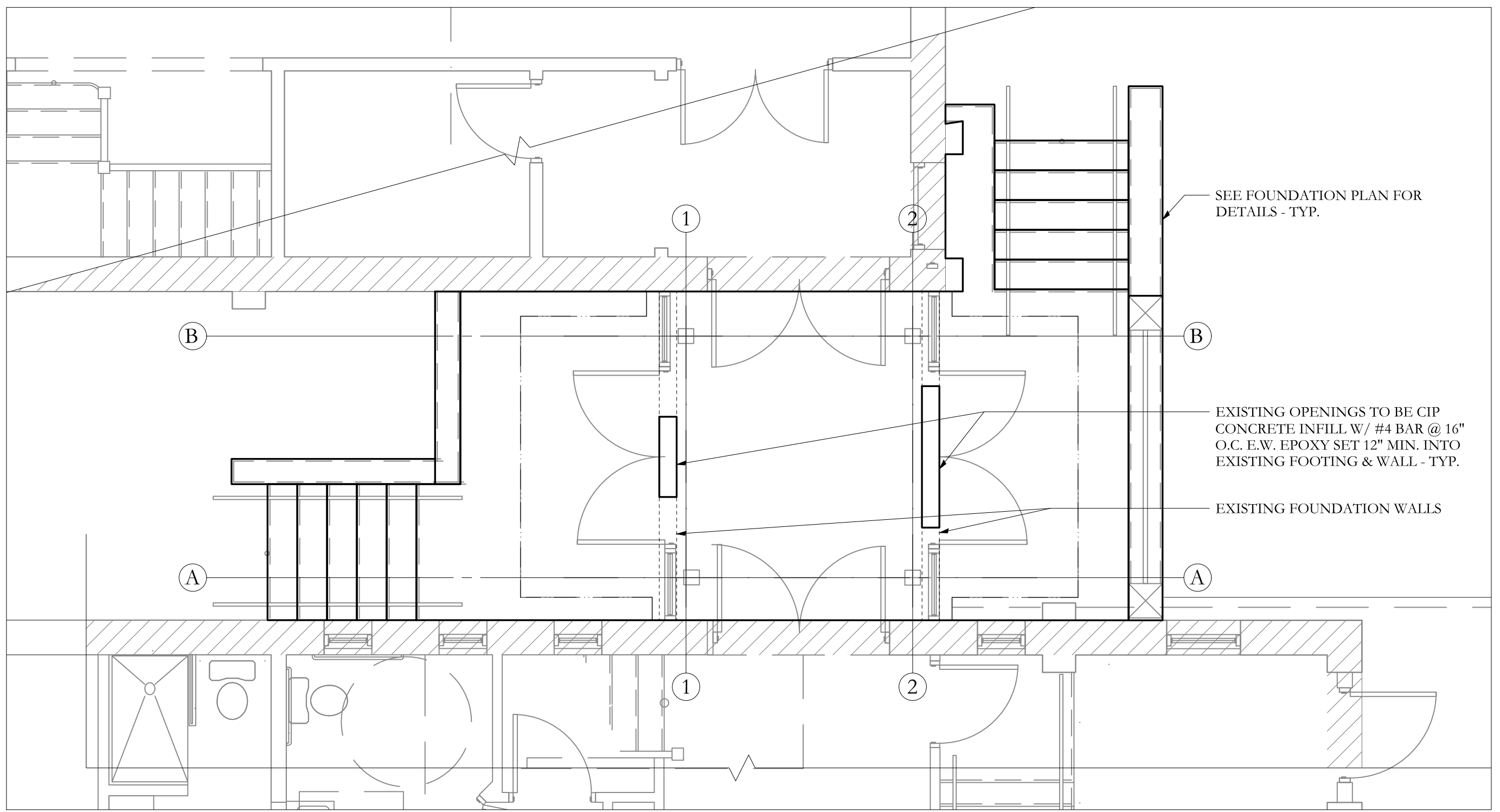
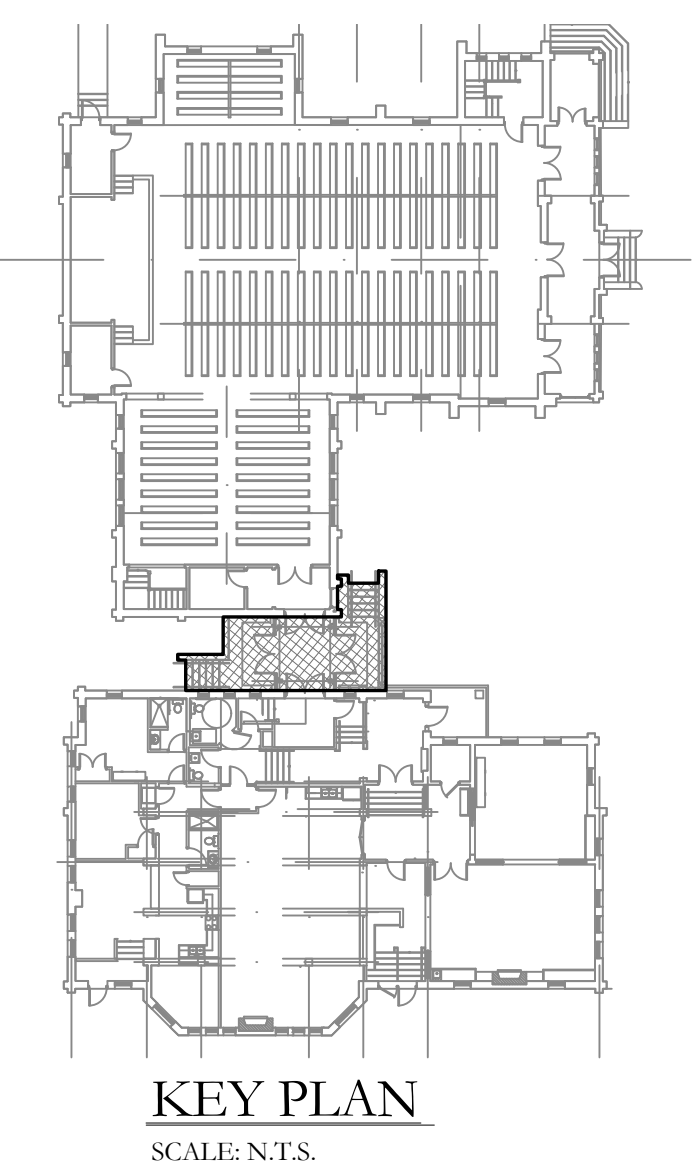
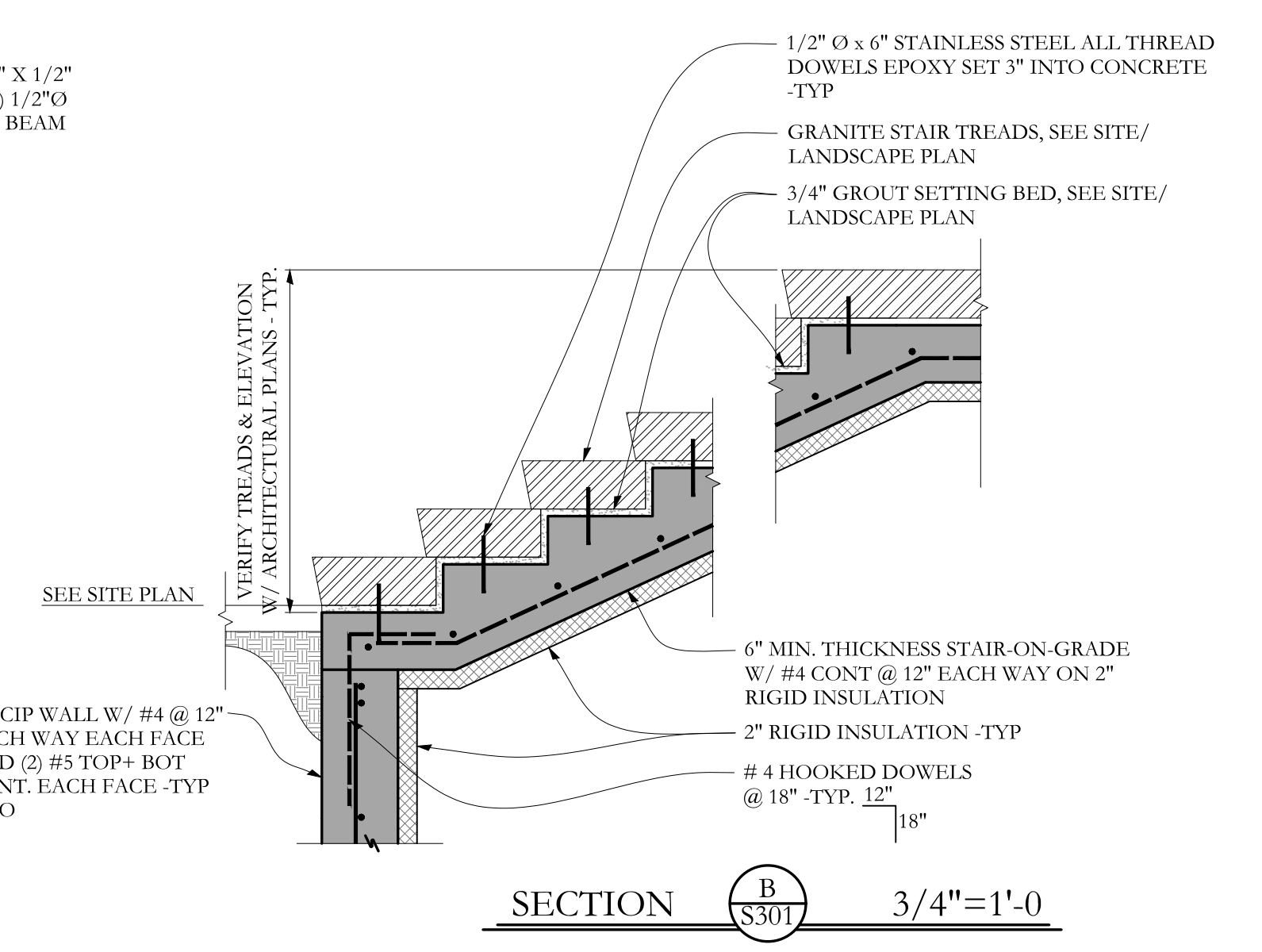
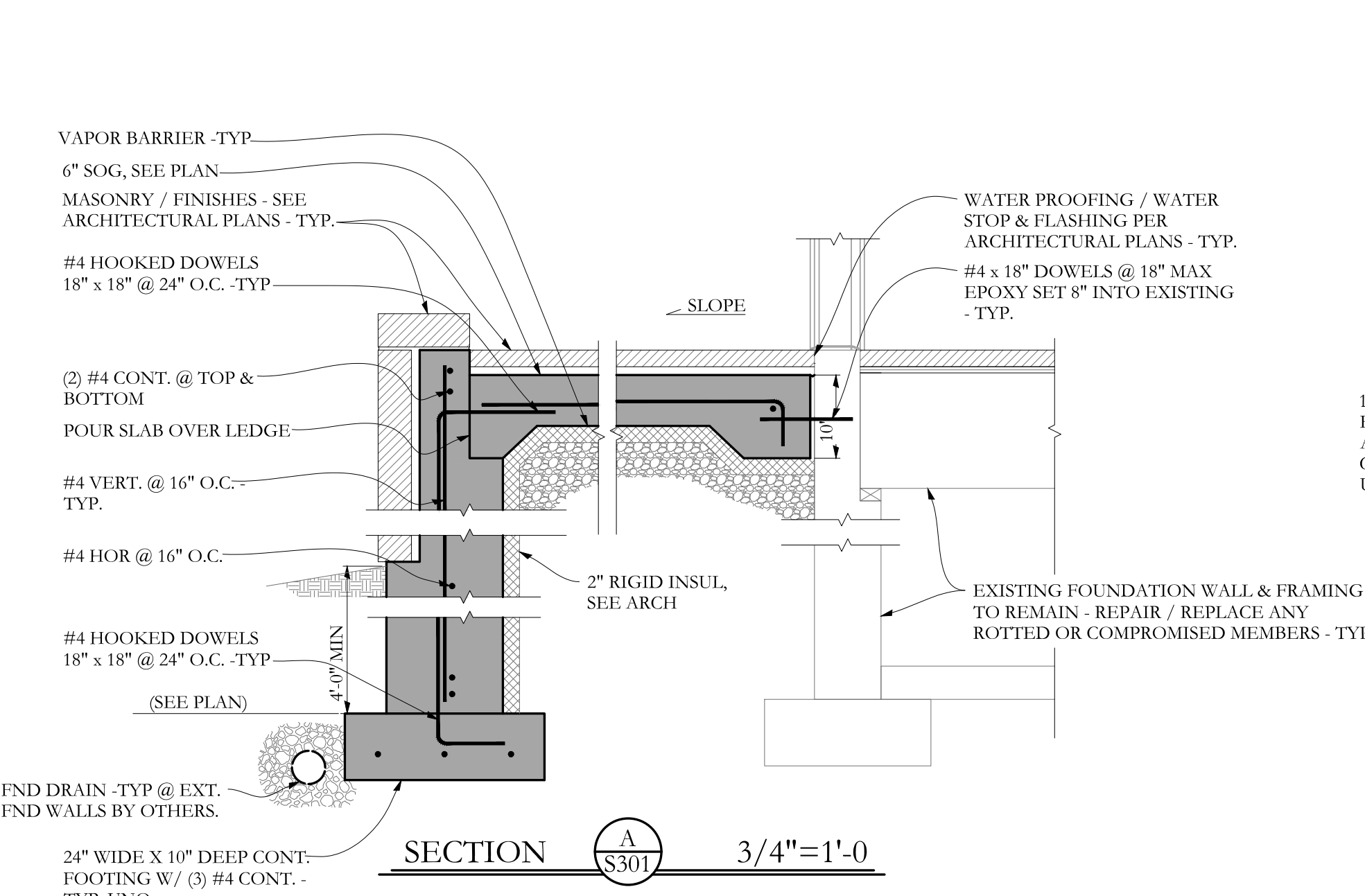
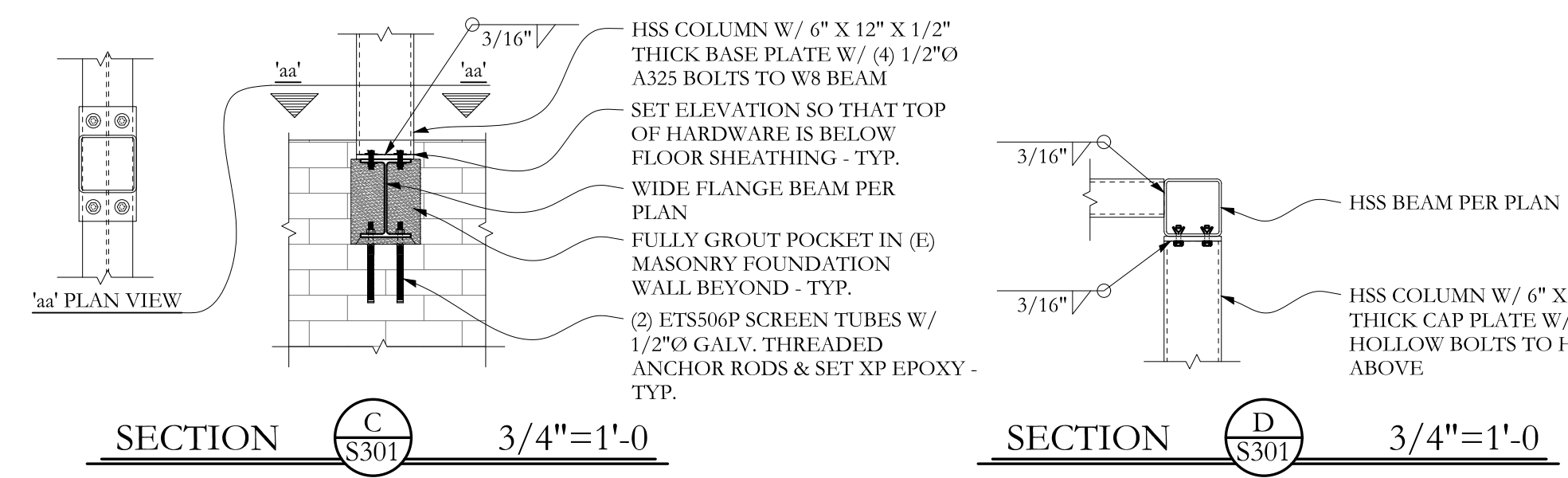
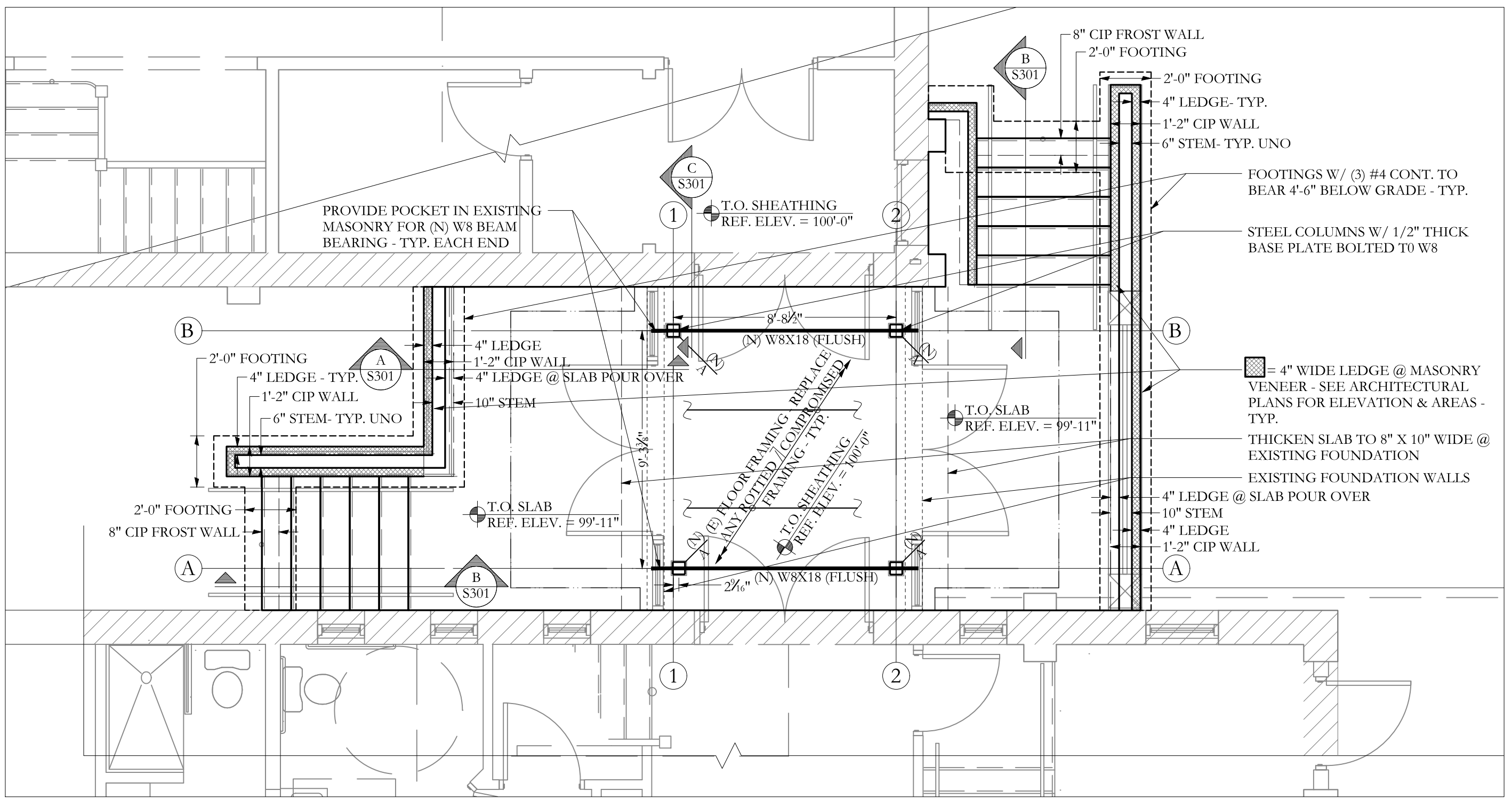


ROOF FRAMING PLAN
 NOTES:
 1. ALL HSS TO HAVE 1/2" THICK CAP PLATES
 SCALE 1/4"=1'-0"



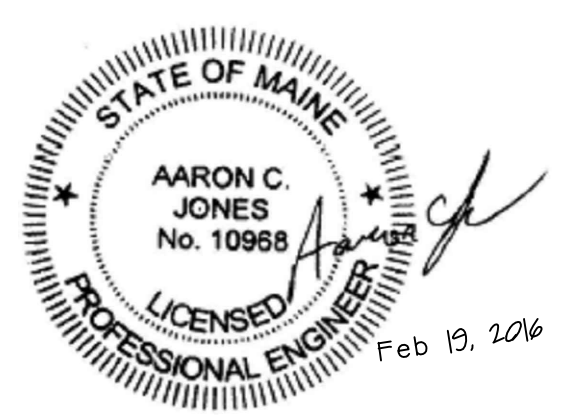
BASEMENT PLAN
 NOTES:
 SCALE 1/4"=1'-0"



FOUNDATION PLAN
 NOTES:
 SCALE 1/4"=1'-0"

41 edgewood ave
 portland, maine 04103
 telephone 207 450 0750
 e-mail matthewwinch@earthlink.net

Structural Integrity
 Consulting Engineers, Inc.
 77 Oak Street
 Portland, ME, 04101
 p. 207-774-6414
 f. 866-793-7835
 www.structuralintegrity.com
 BUILD WITH CONFIDENCE
 © 2012 Structural Integrity Consulting Engineers, Inc.



project name
32 Thomas Street Apartments
 project location
 32 Thomas Street
 Portland Maine 04101

Revisions	date

date Feb 19, 2016
 scale AS NOTED
 project # 2011-018
 drawing title **Parish House Canopy / Stairs S301**
 drawing number