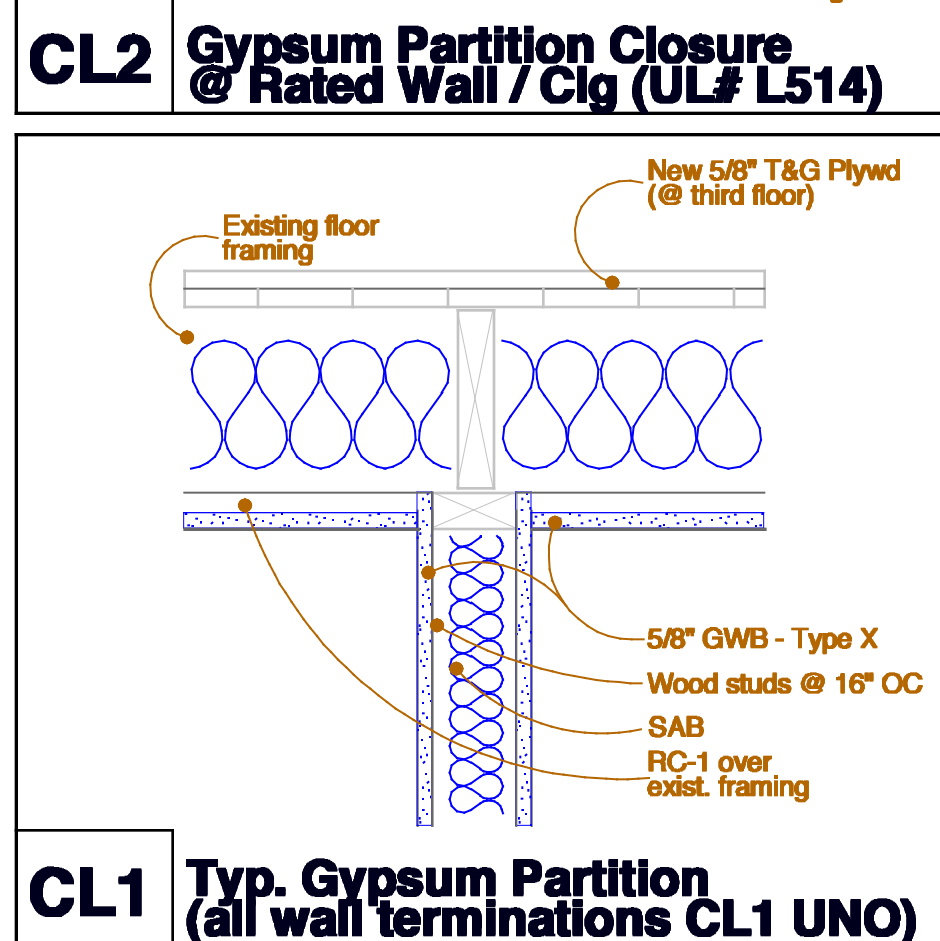
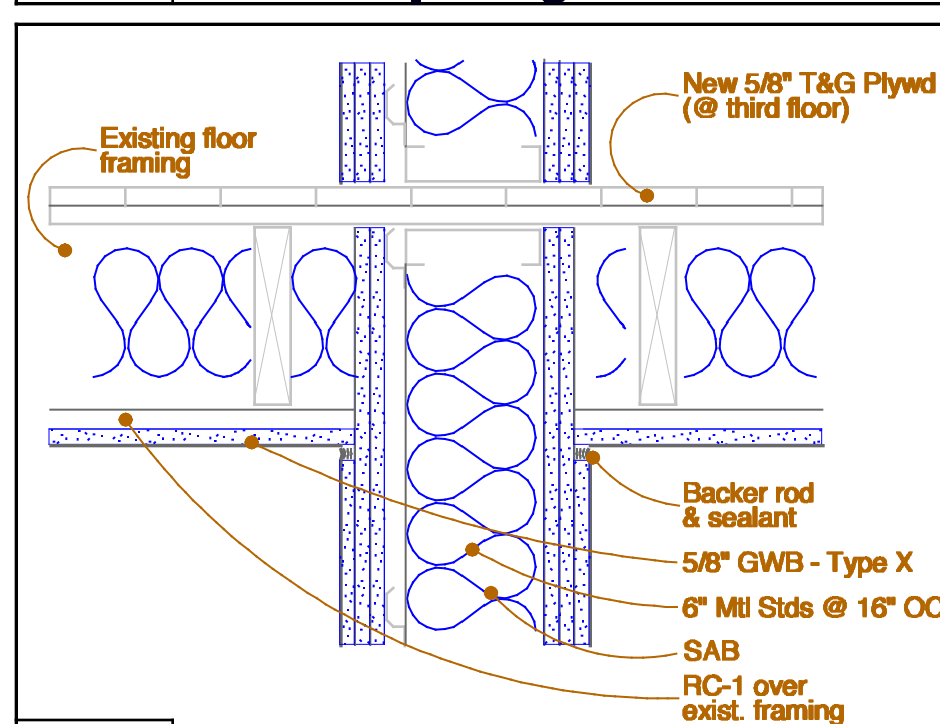
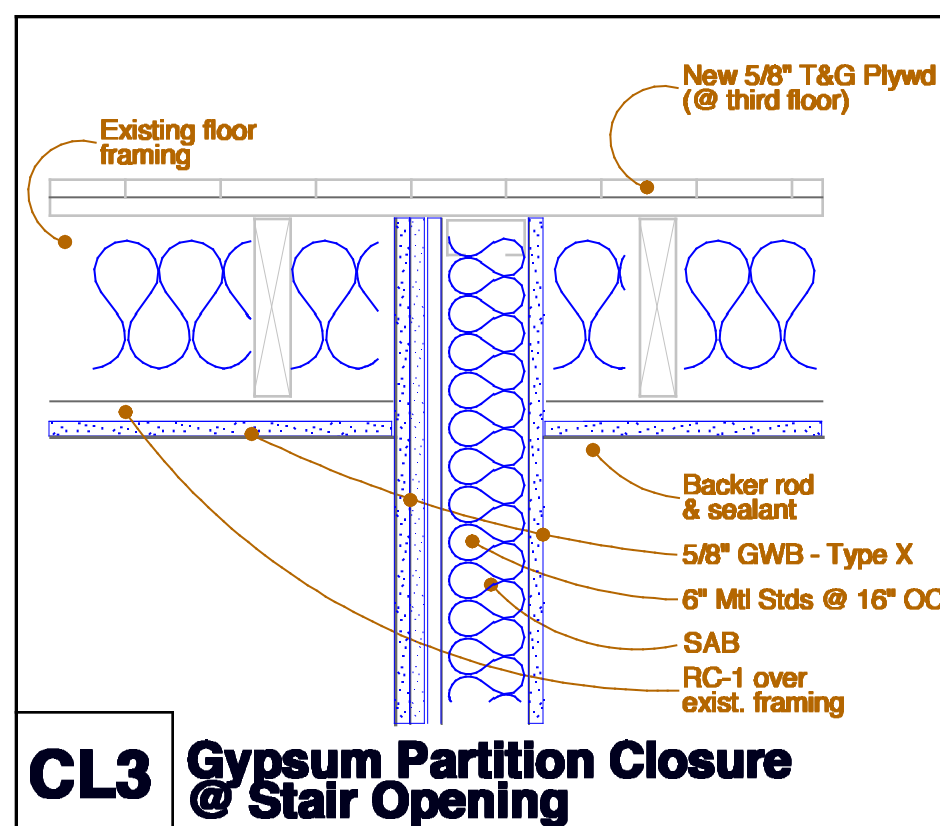


Light and Fixtures Legend

- 1 ⊕ Halo ML56128030-883SNB
IC Rated. All units dimmable
- 2 ⊕ 2 LBL LIGHTING
BA840-OY-SC-LED830
2A denotes single fixture over mirror
- 3 ⊕ Halo 951PS Shower light (white)
IC, wet and humid location rated.
- 4 ⊕ Broan 791LED/100 CFM
Ventilation fan and light
- 5 ⊕ Bega 6873 LED
- 6 ⊕ Bega 6874 LED
- 7 ⊕ Louis Poulsen - Patara
65W LED / 2700K / 120V dimmable
- 8 ⊕ LED Strip light controlled
by door contact
- 9 ⊕ Halo 684WB
Directional trim, IC rated, dimmable
- 10 ⊕ Modern Fan Co - Flow
#FLO GN-52-BB-370-005
- ⊗ DURAGLOW PHOTOLUMINESCENT
EXIT SIGNAGE
- ▽⁸⁵
HS Fire Alarm Horn Strobe (ADJUSTABLE)
85 db at Pillow, mini units in bedrooms
- ⊕ LED EMERGENCY LIGHTING
- PS FIRE ALARM PULL STATION
- ⊕ CO2 SELF DIAGNOSTIC
SMOKE DETECTOR
- ⊕ SELF DIAGNOSTIC
SMOKE DETECTOR



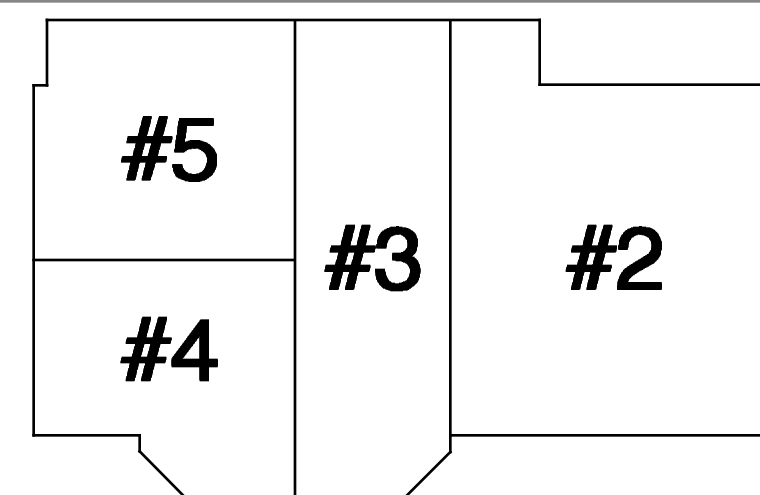
10 Third Floor Reflected Ceiling Plan



41 edgewood ave
portland, maine 04103
telephone 207 450 0750

e-mail mathewwinch@earthlink.net

Unit Key



project name
**32 Thomas Street
Apartments**

project location
32 Thomas Street
Portland Maine 04101

Revisions	date

date February 22, 2016
scale 1/4" = 1'-0"
project # 2011-018
drawing title **Third Floor
Reflected Ceiling Plan**
drawing number **A203**