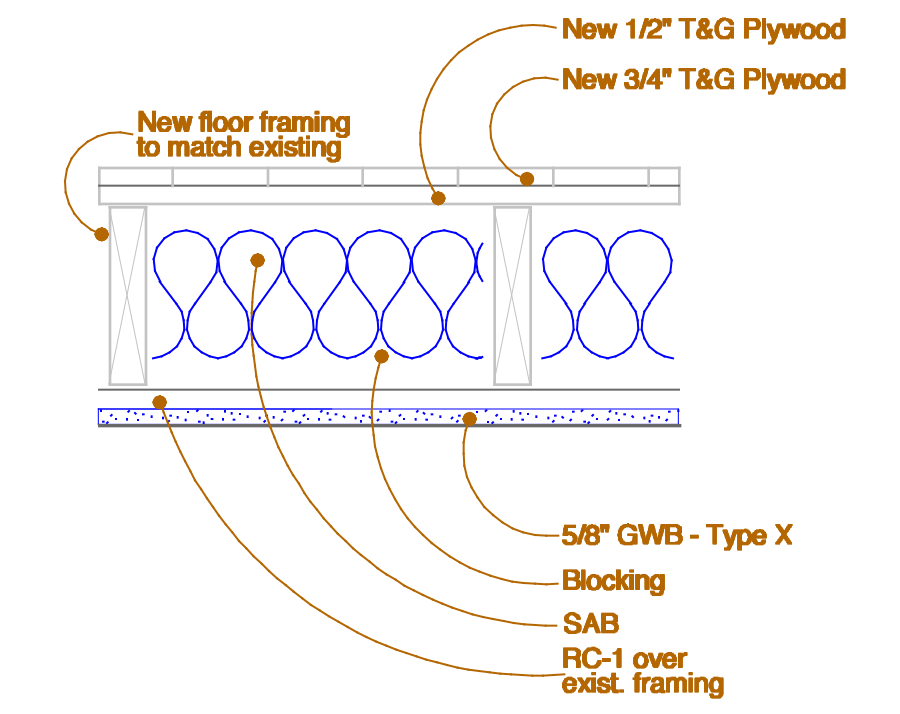


**Light and Fixtures Legend**

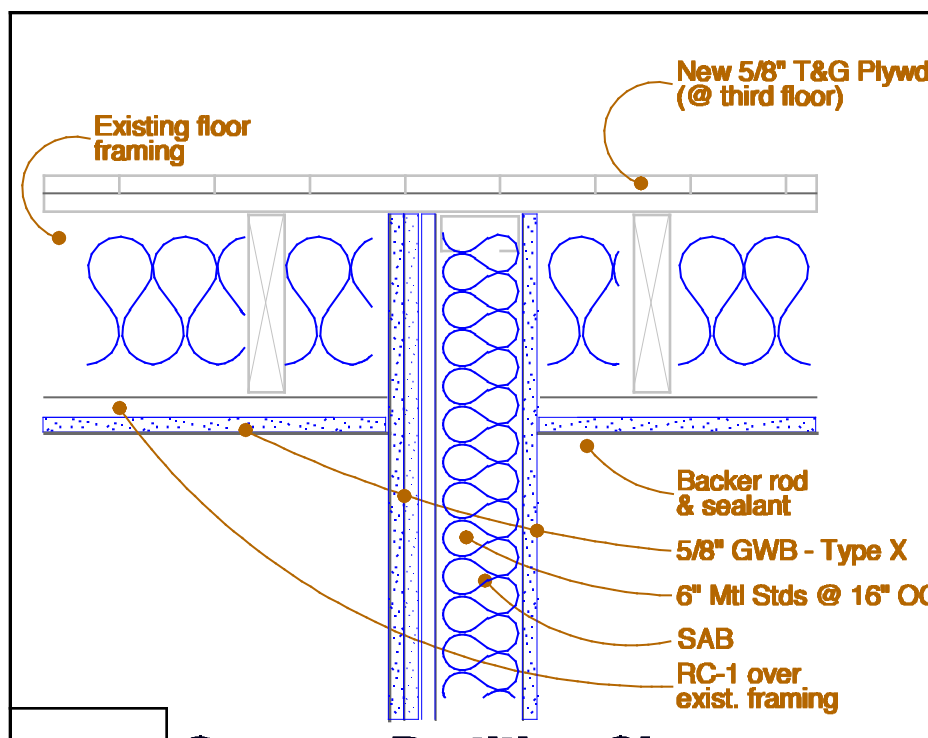
- 1 ⊕ Halo ML56128030-883SNB  
IC Rated. All units dimmable
- 2 LBL LIGHTING  
BA840-OY-SC-LED830  
2A denotes single fixture over mirror
- 3 ⊕ Halo 951PS Shower light (white)  
IC, wet and humid location rated.
- 4 ⊕ Broan 791LED/100 CFM  
Ventilation fan and light
- 5 ⊕ Bega 6873 LED
- 6 ⊕ Bega 6874 LED
- 7 ⊕ Louis Poulsen - Patra  
65W LED / 2700K / 120V dimmable
- 8 ⊕ LED Strip light controlled  
by door contact
- 9 ⊕ Halo 684WB  
Directional trim, IC rated, dimmable
- 10 ⊕ Modern Fan Co - Flow  
#FLO GN-52-BB-370-005
- ⊗ DURAGLOW PHOTOLUMINESCENT  
EXIT SIGNAGE
- ▽<sup>85</sup> HS Fire Alarm Horn Strobe (ADJUSTABLE)  
85 db at Pillow, mini units in bedrooms
- ⊕ LED EMERGENCY LIGHTING
- PS FIRE ALARM PULL STATION
- ⊕ CO2 SELF DIAGNOSTIC SMOKE DETECTOR
- ⊕ SELF DIAGNOSTIC SMOKE DETECTOR



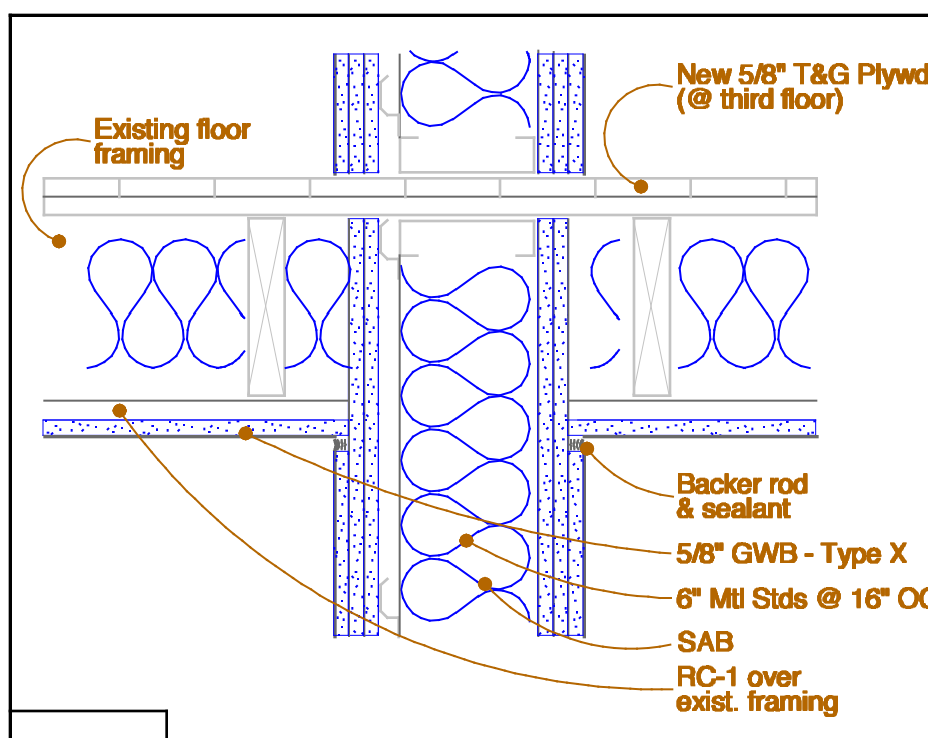
20 Section at Rated Ceiling (UL# L514)



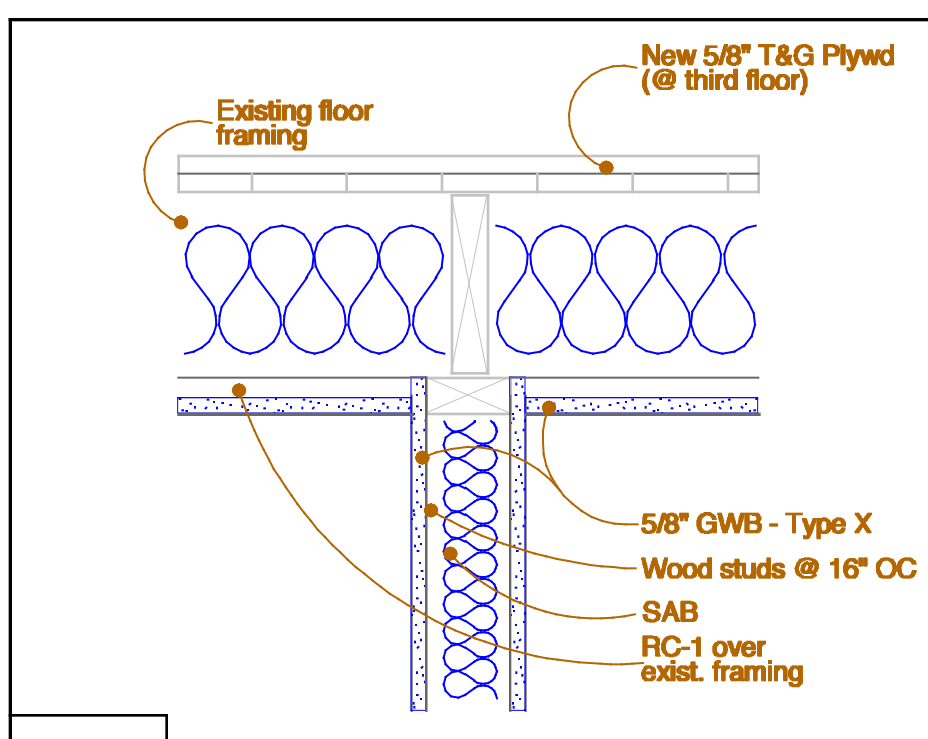
10 Second Floor Reflected Ceiling Plan



CL3 Gypsum Partition Closure @ Stair Opening

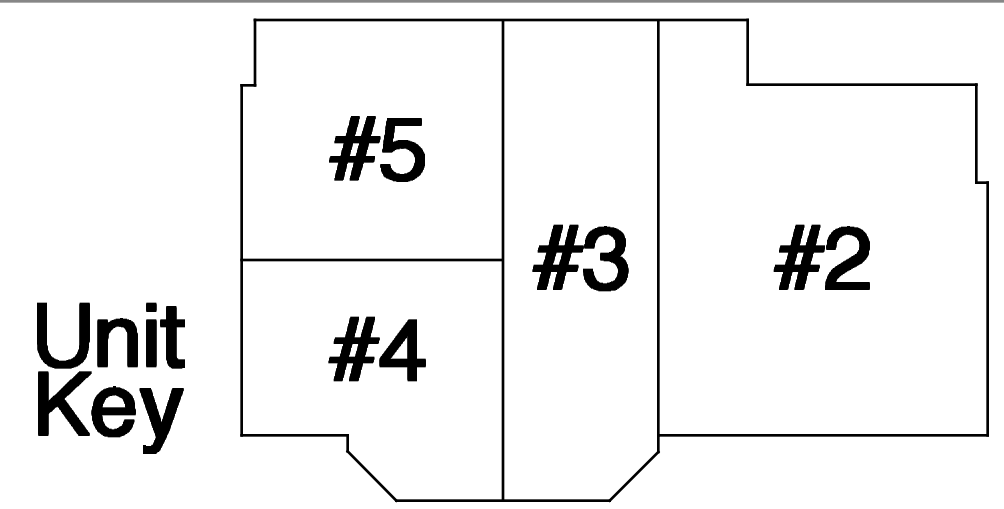


CL2 Gypsum Partition Closure @ Rated Wall / Clg (UL# L514)



CL1 Typ. Gypsum Partition (all wall terminations CL1 UNO)

**GARRISON CONSULTING**  
41 edgewood ave  
portland, maine 04103  
telephone 207 450 0750  
e-mail mathewwinch@earthlink.net



project name  
**32 Thomas Street Apartments**  
project location  
32 Thomas Street  
Portland Maine 04101

Revisions	date

date February 22, 2016  
scale 1/4" = 1'-0"  
project # 2011-018  
drawing title **Second Floor Reflected Ceiling Plan**  
drawing number **A202**