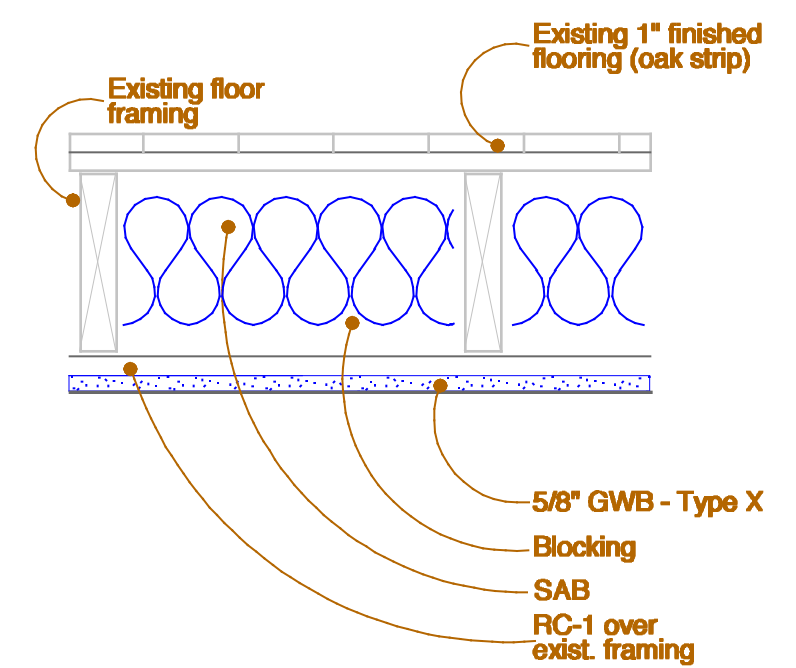


Light and Fixtures Legend

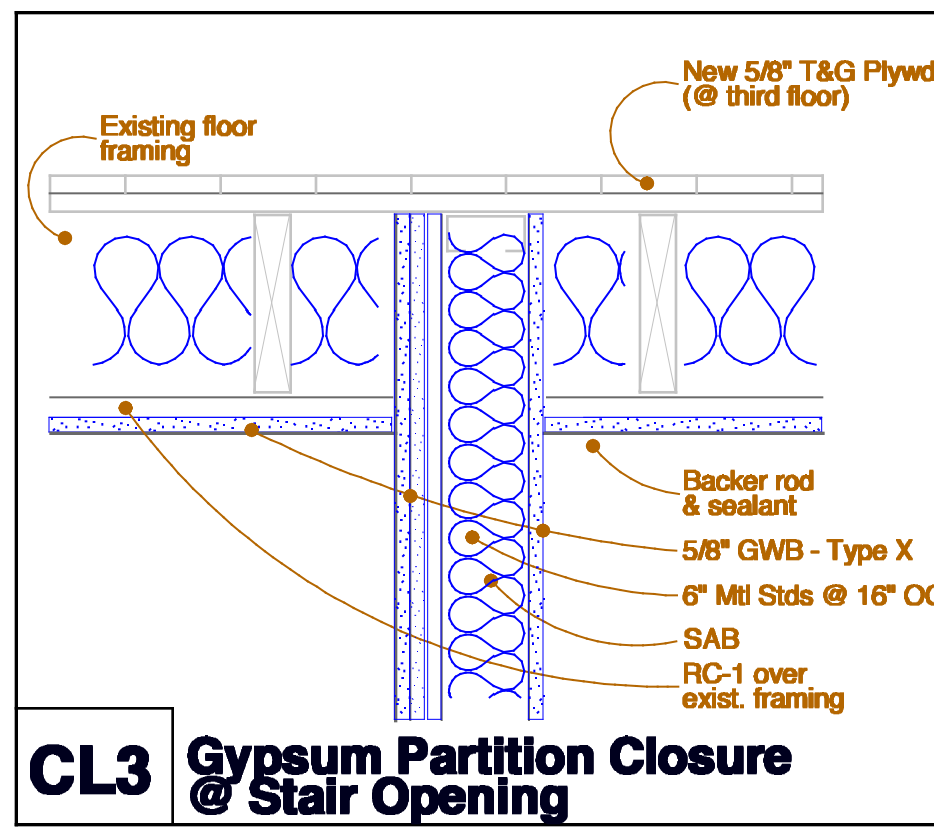
- 1 ⊕ Halo ML56128030-883SNB
IC Rated. All units dimmable
- 2 ⊕ 2 LBL LIGHTING
BAB40-OY-SC-LED830
2A denotes single fixture over mirror
- 3 ⊕ Halo 951PS Shower light (white)
IC, wet and humid location rated.
- 4 ⊕ Broan 791LED/100 CFM
Ventilation fan and light
- 5 ⊕ Bega 6873 LED
- 6 ⊕ Bega 6874 LED
- 7 ⊕ Louis Poulsen - Patera
65W LED / 2700K / 120V dimmable
- 8 ⊕ LED Strip light controlled
by door contact
- 9 ⊕ Halo 684WB
Directional trim, IC rated, dimmable
- 10 ⊕ Modern Fan Co - Flow
#FLO GN-52-BB-370-005
- ⊗ DURAGLOW PHOTOLUMINESCENT
EXIT SIGNAGE
- ▽⁸⁵
HS Fire Alarm Horn Strobe (ADJUSTABLE)
85 db at Pillow, mini units in bedrooms
- ⊕ LED EMERGENCY LIGHTING
- PS FIRE ALARM PULL STATION
- ⊗ SELF DIAGNOSTIC
SMOKE DETECTOR
- ⊗ SELF DIAGNOSTIC
SMOKE DETECTOR



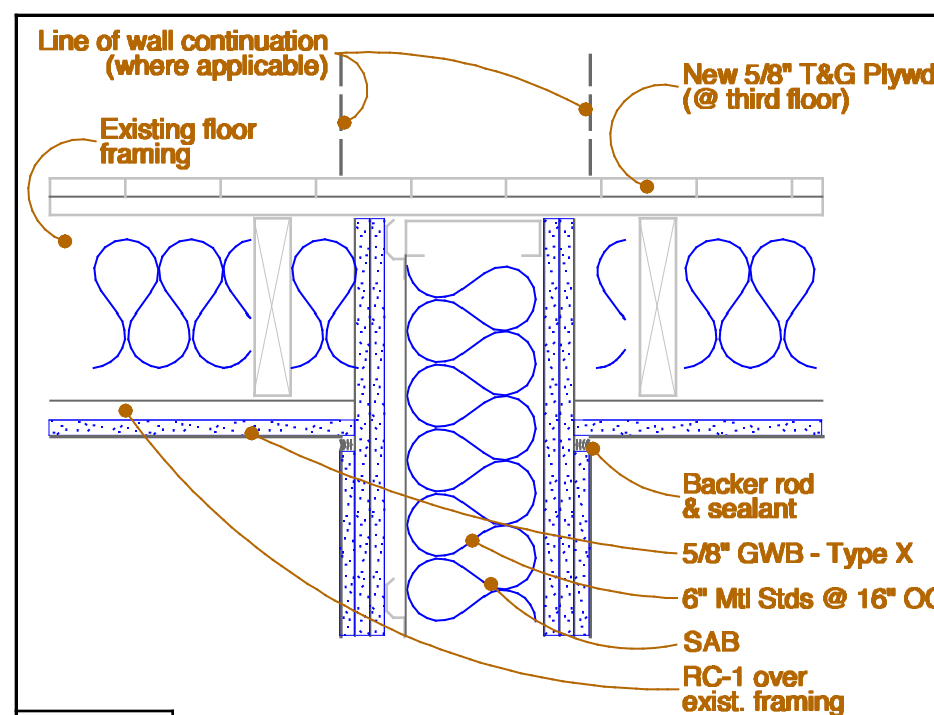
20 Section at Rated Ceiling (UL# L514)



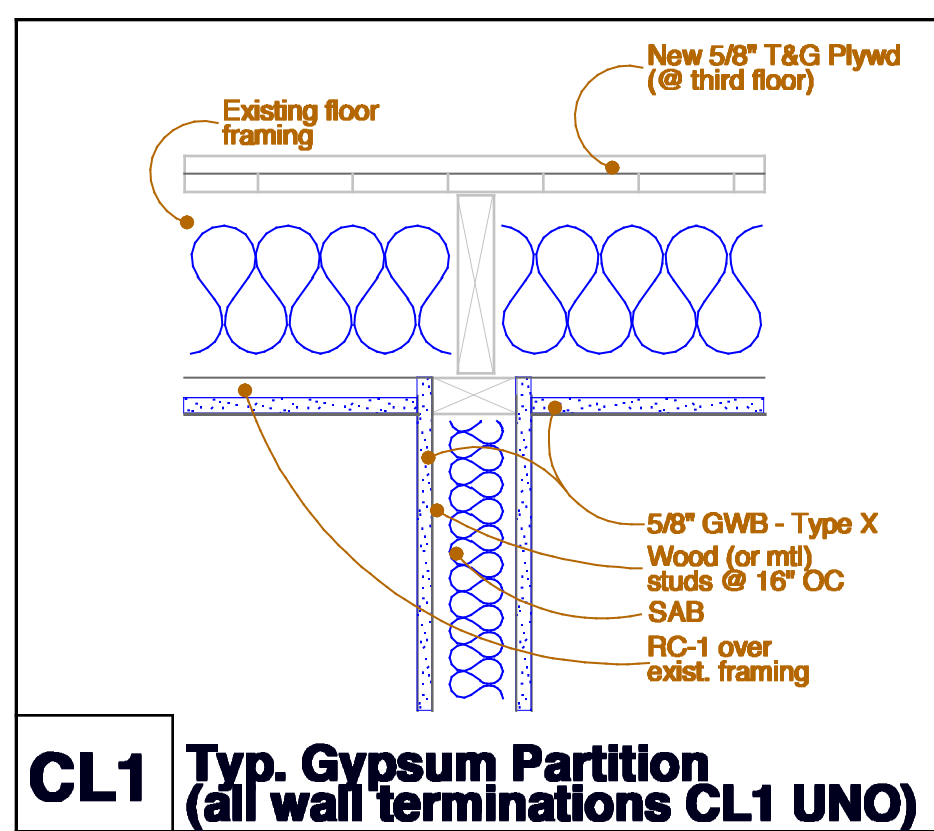
10 Ground Floor Reflected Ceiling Plan



CL3 Gypsum Partition Closure @ Stair Opening

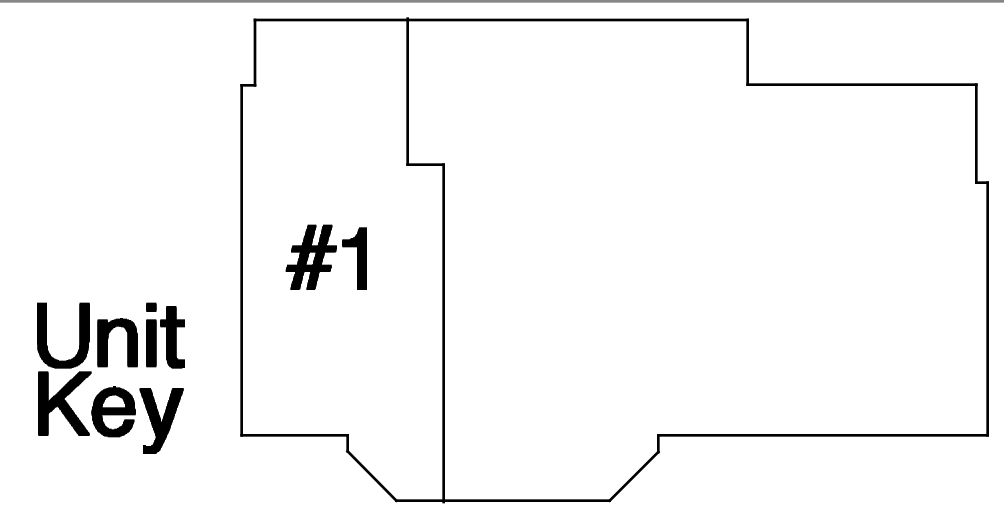


CL2 Gypsum Partition Closure @ Rated Wall / Clg (UL# L514)



CL1 Typ. Gypsum Partition (all wall terminations CL1 UNO)

GARRISON CONSULTING
41 edgewood ave
portland, maine 04103
telephone 207 450 0750
e-mail mathewwinch@earthlink.net



project name
32 Thomas Street Apartments
project location
32 Thomas Street
Portland Maine 04101

Revisions	date	date	February 22, 2016
		scale	1/4" = 1'-0"
		project #	2011-018
		drawing title	Ground Floor Reflected Ceiling Plan
		drawing number	A201