

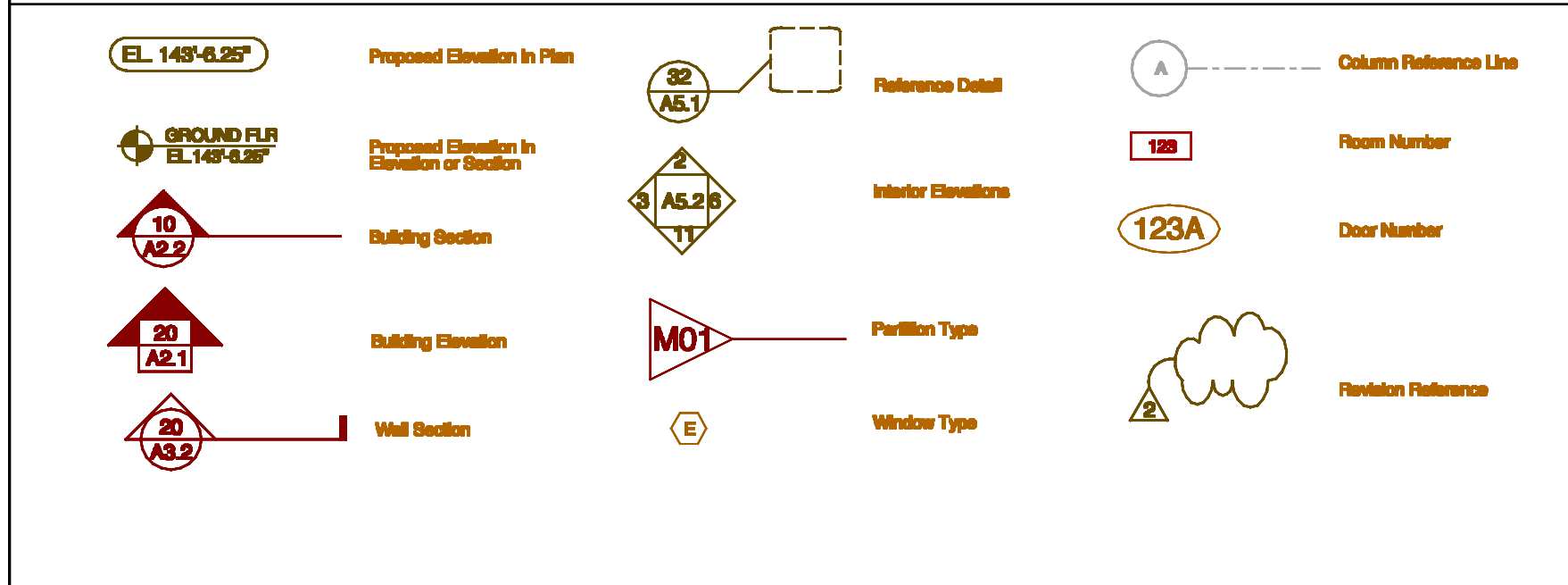
ARCHITECTURAL ABBREVIATIONS

A	ABV Above Finished Floor	AP Access Panel	ACOUS Acoustical	ACT Acoustical Tile	ADD Addendum	ADH Adhesive	ADJ Adjacent	ADJT Adjustable	AGG Aggregate	AC Air Conditioning	ALT Alternate	AL Aluminum	ANC Anchor, Anchorage	AB Anchor Bolt	ANOD Anodized	APPROX Approximate	ARCH Architect (ural)	AD Area Drain	AUTO Automatic	AVG Average	B	BSMT Basement	BM Beam	BRG Bearing	BEL Below	BET Between	BIT Bituminous	BLK Block	BLKG Blocking	BD Board	BOT Bottom	BW Bottom of Wall	BKT Brick	BRK Building	BLDG Bulk-Up Roofing	C	CAB Cabinet	CUH Cabinet Unit Heater	CPT Carpet (ed)	CI Cast Iron	CB Catch Basin	CLG Ceiling	CEM Cement	CTR Center	CG Ceramic Grout	CO Cleanout	CLR Clear (ance)	CLO Closet	COL Column	COMP Compensate (ed, ion, ible)	CONC Concrete	CMU Concrete Masonry Unit	CONST Construction	CONT Continuous, Continue	CONTR Contract (on)	CJT Control Joint	CG Corner Guard	CCR Corridor	CTS Counter-sink	CSFH Counter-sink Flat Head	CRS Course	D	DEPT Department	DTL Detail	DIAM Diameter	DM Dimension	DW Dishwasher	DPR Dispenser	DR Door	DO Door Opening	DBL Double	DA Double Acting	DN Down	DWR Drawer	DWG Drawing	DF Drinking Fountain	E	EA Each	ELEC Electric	EWC Electric Water Cooler	EL Elevation	ELEV Elevator	EMER Emergency	ENC Enclosure (line)	EOP Equipment	EXH Exhaust	EXST Existing	EXP Expansion, Exposed	EJT Expansion Joint	EXT Exterior	EXTD Extruded	F	FAB Fabricated	FOC Face of Concrete	FOF Face of Finish	FOM Face of Masonry	FOB Face of Stud	FIN Finish (ed)	FF Finished Floor	FA Fire Alarm	FE Fire Extinguisher	FFC Fire Extinguisher Cabinet	FFH Fire Hose Cabinet	FFRF Fireproof	FR Fire Rating	FRK Flange	FG Flashing	FWWS Floorhead Wood Screw	FLR Floor (ing)	FD Floor Drain	FLUOR Fluorescent	FTG Footing	FND Foundation	FS Full Size	FUR Furred (ing)	G	GA Gage, Gauge	GALV Galvanized	GL Glass, Glazing	GMU Glass Masonry Unit	GB Grab Bar	GD Grade, Grading	GT Gout	GWB Gypsum Wallboard	H	HCP Handicapped	HD Hardwood	HW Hardware	HVAC Heating/Ventilating/Air Conditioning	HT Heat	HPT High Point	HCC Hollow Core	HM Hollow Metal	HSS Hot Rolled Steel	HR Hour	PSF Pounds per Square Foot	PSI Pounds per Square Inch	PRP Proposed	I	IN Inch	INCL Include (d, ing)	ID Inside Diameter	INSUL Insulate	INT Interior	INV Invert	IPS Iron Pipe Size	J	JAN Janitor	JT Joint	K	KIT Kitchen	L	LAM Laminate (d)	LAV Lavatory	LCC Lead-Coated Copper	LH Left Hand	LT Light	LWT Lightweight	LVR Lower	LPT Low Point	M	MACH Machine	MH Membrane	MFR Manufacture (y)	MAS Masonry	MO Masonry Opening	MTL Material (s)	MAX Maximum	MECH Mechanical	MC Medicine Cabinet	MET Metal	MIN Minimum	MISC Miscellaneous	MOD Modular	MR Moisture Resistant	MLDG Molding, Moulding	MTD Mounted	N	NOM Nominal	NPS Nominal Pipe Size	NC Noncorrosive	NO North	NA Not Applicable	NIC Not in Contract	NTS Not To Scale	NO Number	NFI Not Fitted	O	OC On Center (s)	OPNG Opening	OPP Opposite	OPH Opposite Hand	OZ Ounce	OD Outside Diameter	OA Overall	OH Overhead	P	PAF Power Actuated Fastener	PNT Paint (ed)	PR Pair	PNL Panel	PTD Paper Towel Dispenser	PTR Paper Towel Receptacle	Q	QTY Quantity	QT Quarry Tile	R	RAD Radius	RML Rafter Leader	REF Reference	RFL Reflect (ed, ive, or)	REFR Refrigerator	RE Reinforce (d, ing)	REM Remove	REQ Required	RES Resilient	RESB Resilient Base	RT Resilient Tile	RA Return Air	REV Revision	RH Right Hand	R Riser	RD Floor Drain	RM Room	RO Rough Opening	S	SAB Sound Absorption Blanket	SND Sanitary Napkin Dispenser	SNR Sanitary Napkin Receptor	SCH Schedule	SEAL Sealant	SEC Section	SHTH Sheathing	SHT Sheet	SM Sheet Metal	SH Shelf, Shelving	SHR Shower	SM Shower	SOB Step On Grade	SD Soap Dispenser	STC Sound Transmission Class	S Sound	SPEC Specification (n)	SA Spray Acoustic	SQ Square	SSS Stainless Steel	ST Stair	STD Standard	STA Station	STL Steel	STO Storage	STR Structural	STB Subfloor	SUSP Suspended	T	TKB Telephone	TEJ Tongue and Groove	T&G Top and Bottom	T&S Top of Concrete	TC Top of Concrete	TF Top of Footing	TJ Top of Joint	TP Top of Plate	TRD Top of Rough Opening	TS Top of Stud	TST Top of Stair	TSF Top of Subfloor	TSF Top of Wall	TW Trawl Bar	TS Transition Strip	T Tread	Typ Typical	U	UL Underwriters Laboratory	V	VCT Vinyl Composition Tile	VEST Vestibule	VEST Vestibule	VEN Vent	VIN Vinyl	VWC Vinyl Wall Covering	W	WC Water Closet	WH Water Heater	WP Waterproofing	WT Weight	WWF Welded Wire Fabric	W West, Width, Wide	WIN Window	WI Wire Mesh	WO Without	WD Wood	WPT Work Point	WI Wrought Iron	X None	Y None	Z None	None None
----------	--------------------------	-----------------	------------------	---------------------	--------------	--------------	--------------	-----------------	---------------	---------------------	---------------	-------------	-----------------------	----------------	---------------	--------------------	-----------------------	---------------	----------------	-------------	----------	---------------	---------	-------------	-----------	-------------	----------------	-----------	---------------	----------	------------	-------------------	-----------	--------------	----------------------	----------	-------------	-------------------------	-----------------	--------------	----------------	-------------	------------	------------	------------------	-------------	------------------	------------	------------	---------------------------------	---------------	---------------------------	--------------------	---------------------------	---------------------	-------------------	-----------------	--------------	------------------	-----------------------------	------------	----------	-----------------	------------	---------------	--------------	---------------	---------------	---------	-----------------	------------	------------------	---------	------------	-------------	----------------------	----------	---------	---------------	---------------------------	--------------	---------------	----------------	----------------------	---------------	-------------	---------------	------------------------	---------------------	--------------	---------------	----------	----------------	----------------------	--------------------	---------------------	------------------	-----------------	-------------------	---------------	----------------------	-------------------------------	-----------------------	----------------	----------------	------------	-------------	---------------------------	-----------------	----------------	-------------------	-------------	----------------	--------------	------------------	----------	----------------	-----------------	-------------------	------------------------	-------------	-------------------	---------	----------------------	----------	-----------------	-------------	-------------	---	---------	----------------	-----------------	-----------------	----------------------	---------	----------------------------	----------------------------	--------------	----------	---------	-----------------------	--------------------	----------------	--------------	------------	--------------------	----------	-------------	----------	----------	-------------	----------	------------------	--------------	------------------------	--------------	----------	-----------------	-----------	---------------	----------	--------------	-------------	---------------------	-------------	--------------------	------------------	-------------	-----------------	---------------------	-----------	-------------	--------------------	-------------	-----------------------	------------------------	-------------	----------	-------------	-----------------------	-----------------	----------	-------------------	---------------------	------------------	-----------	----------------	----------	------------------	--------------	--------------	-------------------	----------	---------------------	------------	-------------	----------	-----------------------------	----------------	---------	-----------	---------------------------	----------------------------	----------	--------------	----------------	----------	------------	-------------------	---------------	---------------------------	-------------------	-----------------------	------------	--------------	---------------	---------------------	-------------------	---------------	--------------	---------------	---------	-----------------------	----------------	-------------------------	----------	------------------------------	-------------------------------	------------------------------	--------------	--------------	-------------	----------------	-----------	----------------	--------------------	------------	-----------	-------------------	-------------------	------------------------------	---------	------------------------	-------------------	-----------	---------------------	----------	---------------------	--------------------	------------------	--------------------	-----------------------	---------------------	-----------------------	----------	---------------	-----------------------	--------------------	---------------------	--------------------	-------------------	-----------------	-----------------	--------------------------	----------------	------------------	---------------------	-----------------	--------------	---------------------	---------	-------------	----------	----------------------------	----------	----------------------------	----------------	----------------	----------	-----------	-------------------------	----------	-----------------	-----------------	------------------	-----------	------------------------	----------------------------	------------	--------------	------------	---------	----------------	-----------------	---------------	---------------	---------------	------------------

GENERAL NOTES

- General Contractor shall verify all dimensions and report any discrepancies to the Architect before proceeding with work.
- General Contractor shall maintain structural integrity and weather tightness during construction.
- General Contractor shall coordinate all trades, scheduling of work, and inspections.
- All masonry dimensions are nominal and are to face of masonry unless otherwise noted. All partition dimensions are to face of stud unless otherwise noted.
- All doors shall be located a minimum of 2" off wall except where noted or dimensioned otherwise.
- All door dimensions indicate leaf size.
- Before penetrating or otherwise modifying joists, beams, or other structural members, consult with Structural Engineer on maximum size and location.
- Verify size and location of all existing underground utilities and report all discrepancies to the Architect before proceeding with the work.
- General Contractor to provide, coordinate and install solid wood blocking in walls.
- All walls are to be constructed with 5/8" gypsum wallboard.
- General Contractor to use pressure-treated lumber at all locations or areas exposed to continuous moisture.
- General Contractor to foam insulate all exterior doors, window frames and thresholds, add perimeter roof connections as noted on details.
-
-

ARCHITECTURAL SYMBOLS



32 Thomas St Apartments

32 Thomas St LLC

Portland, Maine

February 22, 2016

Project Directory

List of Drawings

Site Location

Owner:

32 Thomas St LLC
32 Thomas Street
Portland Maine 04102

Architect:

Garrison Consulting
Matthew Winch, Architect
41 Edgewood Avenue
Portland, Maine 04103
(207) 450-0750
matthewwinch@earthlink.net

Landscape Architect:

Orcutt Consulting
Cynthia Orcutt Landscape Architect
266 Main Street
Kingfield, ME 04947
(207) 939-6518
corcutt86@gmail.com

Civil Engineer:

SGC Engineering LLC
Eric Williams, PE
County Road
Westbrook Maine 04103
(207) 347-8137
ewilliams@sgceng.com

Structural Engineer:

Structural Integrity, Inc
Aaron Jones, PE
77 Oak Street
Portland, ME 04101
(207) 774-4614
aaron@structuralinteg.com

A000 Cover Sheet

Site Plan

C100 Civil Plan
C101 Civil Plan

D101 Ground Floor Demolition Plan
D102 Second Floor Demolition Plan
D103 Third Floor Demolition Plan

S100 General Notes
S101 1st Floor Framing
S102 2nd Floor Framing
S103 3rd Floor Framing
S104 Roof Framing
S201 Sections
S301 Canopy, Stairs

A101 Ground Floor Plan
A102 First Floor Plan
A103 Second Floor Plan
A104 Third Floor Plan

A201 Ground Floor Reflected Ceiling Plan
A202 Second Floor Reflected Ceiling Plan
A203 Third Floor Reflected Ceiling Plan

A301 Elevations and Sections
A302 Enlarged Elevation
A303 Enlarged Building Section

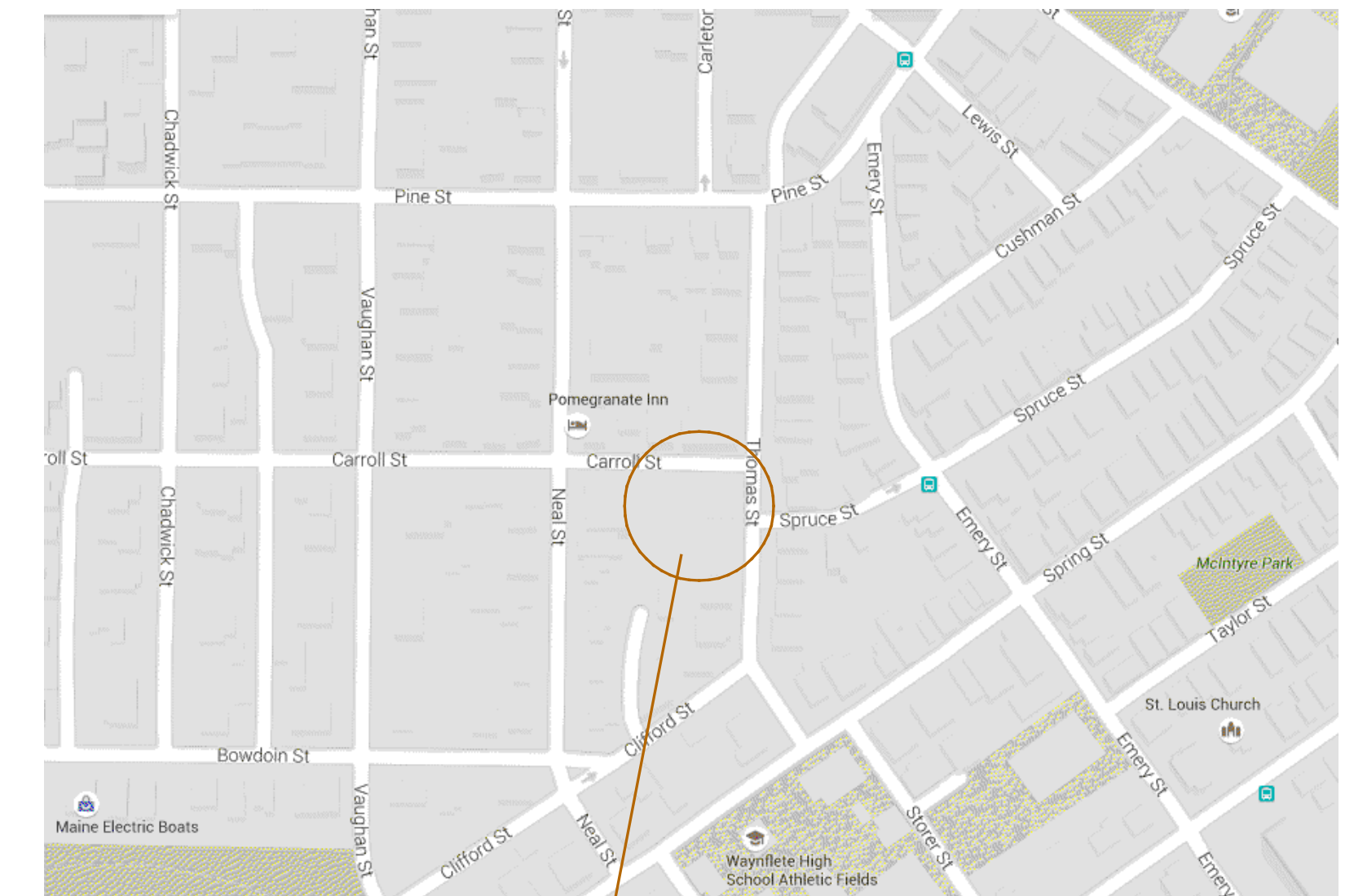
A601 Interior Stairs
A602 Interior Stair Details

A801 Door Schedule & Details
A801 Window Schedule & Details

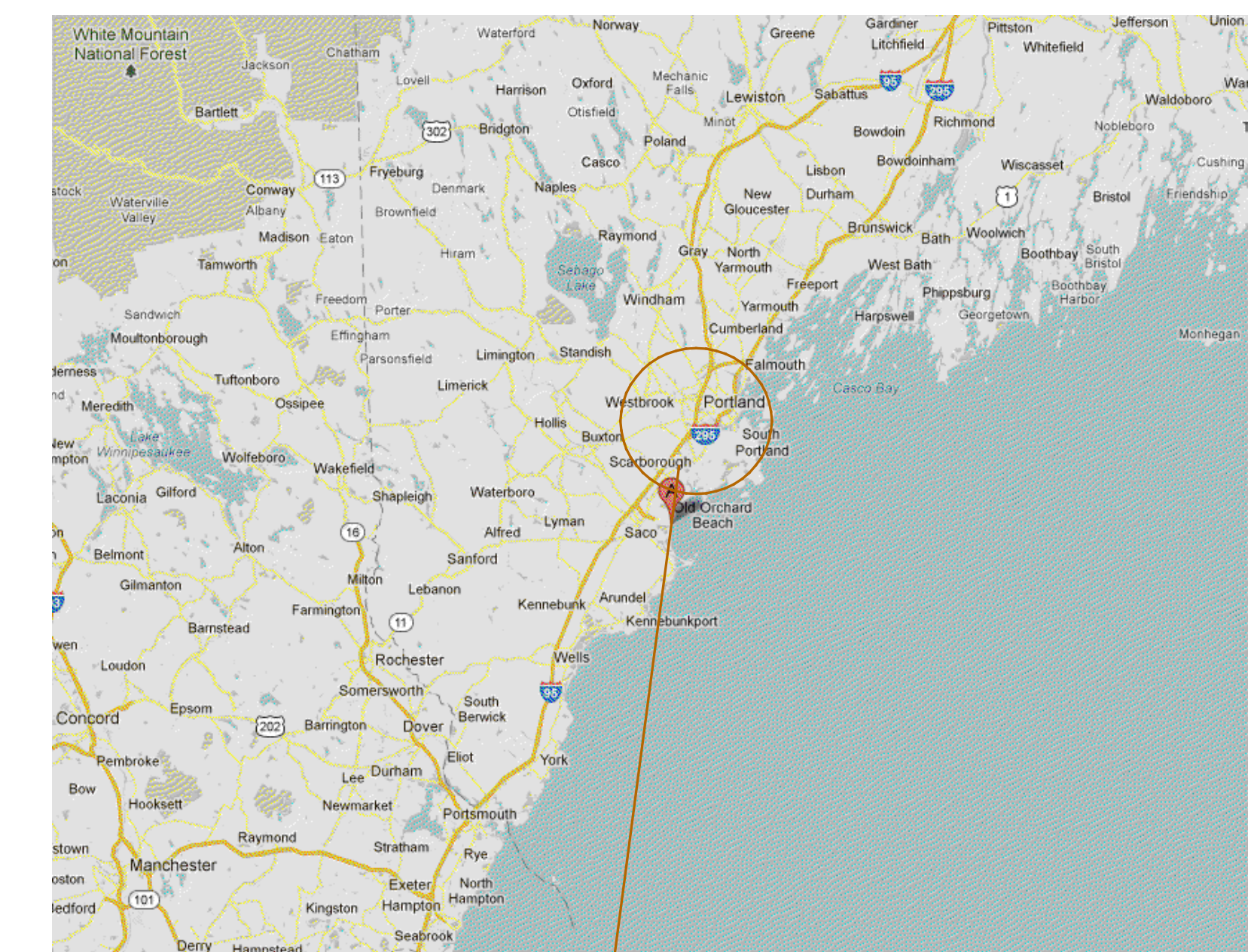
A901 Kitchen Layout Plan
A902 Kitchen Elevations
A903 Kitchen Elevations
A904 Bathroom Layout Plans
A905 Bathroom Elevations
A906 Bathroom Elevations
A907 Ground Floor Finish Plan
A908 Second Floor Finish Plan
A909 Third Floor Finish Plan

L101 Landscape & Planting Plan

LS101 Ground Floor Life Safety Plan
LS102 Second Floor Life Safety Plan
LS103 Third Floor Life Safety Plan



32 Thomas St Apartments
32 Thomas Street



Portland, Maine



41 edgewood ave
portland, maine 04103
telephone 207 450 0750

e-mail matthewwinch@earthlink.net

ISSUED FOR BUILDING PERMIT

