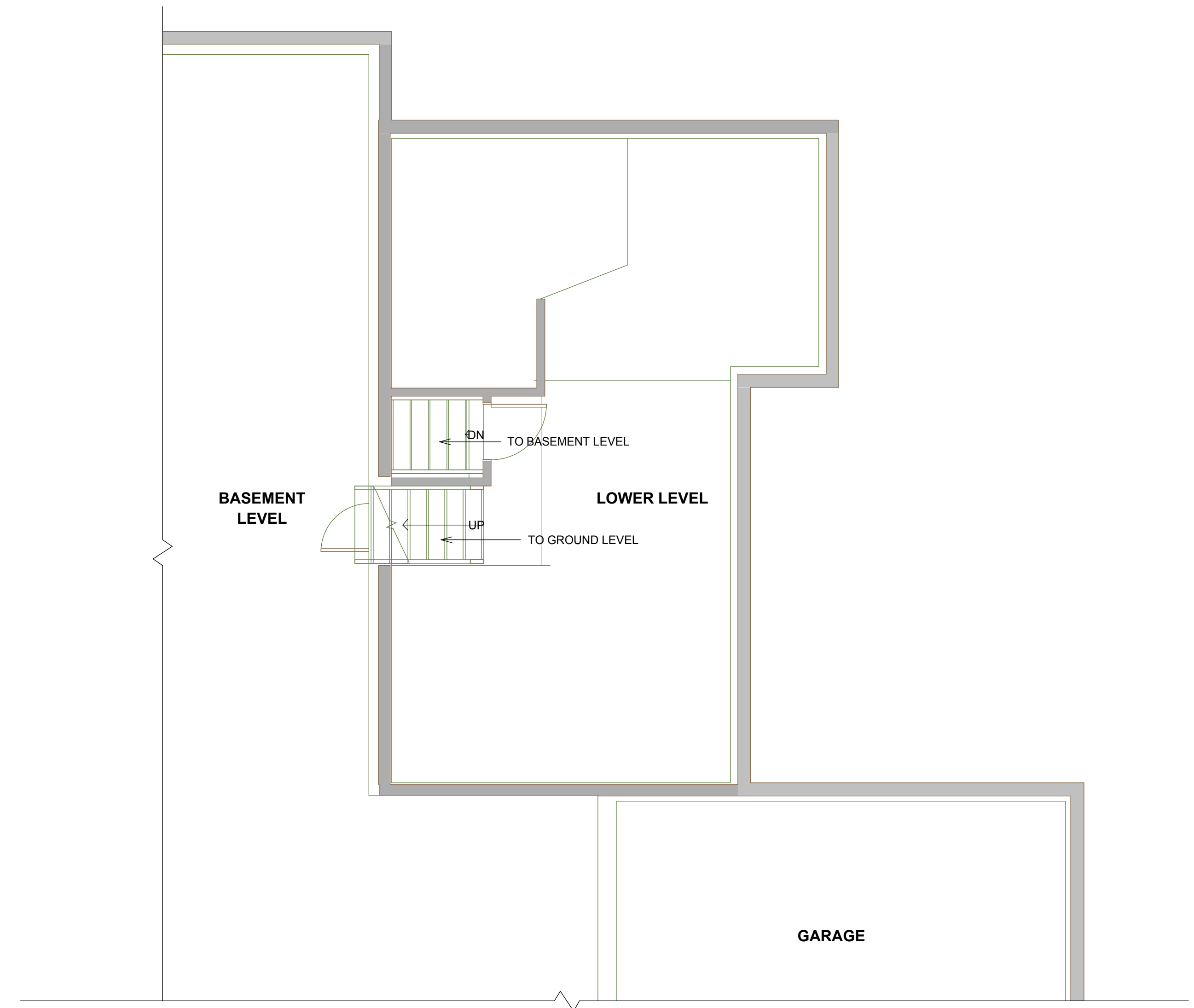


1 EXISTING BASEMENT PLAN
Scale: 1/4" = 1'-0"



2 EXISTING LOWER LEVEL PLAN
Scale: 1/4" = 1'-0"

PERMIT SET

	Design Firm RESIDENTIAL DESIGN STUDIO, LLC Carol A. Morrissette 31 Chestnut Street, Suite 506 Portland, Maine 04101 T: 207.699.4164 C: 207.671.7965	Project Title 107 VAUGHAN STREET AFTER THE FACT PERMIT PORTLAND, MAINE	Sheet Status PERMIT SET	
			Project Number 16.98	Date 23 FEBRUARY 2018
Revisions 1 . 2 . 3 .	Sheet Title BASEMENT & LOWER LEVEL PLANS	Sheet Scale 1/4" = 1'-0" UNO CAD File Number 107 VAUGHN ST	Drawn By CAM	Sheet No. A1.2
			Drawn By CAM	Sheet No. A1.2
			Drawn By CAM	Sheet No. A1.2