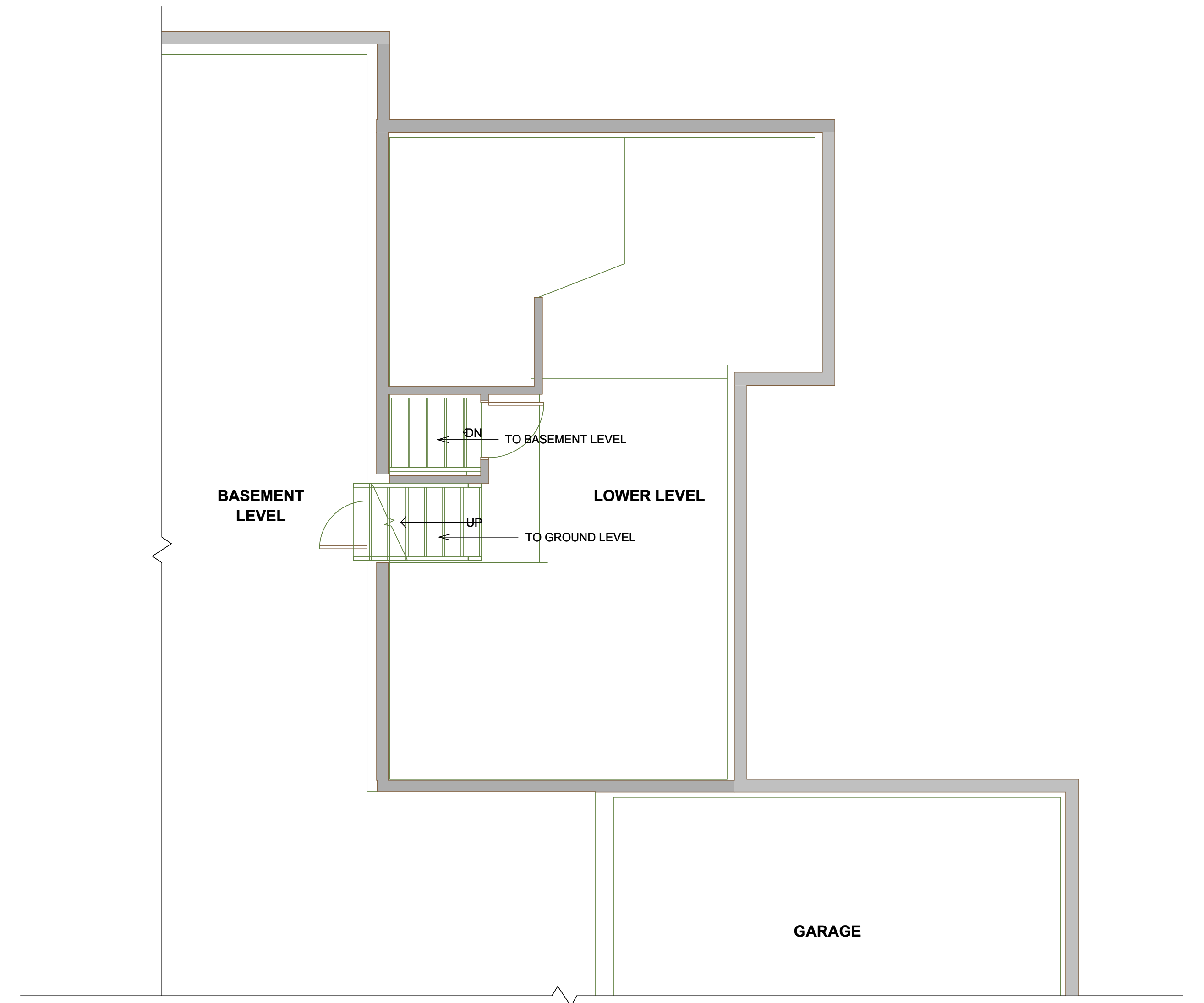



1 EXISTING BASEMENT PLAN  
Scale: 1/4" = 1'-0"



2 EXISTING LOWER LEVEL PLAN  
Scale: 1/4" = 1'-0"

**PERMIT SET**

	Design Firm <b>RESIDENTIAL DESIGN STUDIO, LLC</b> Carol A. Morrissette 31 Chestnut Street, Suite 506 Portland, Maine 04101 T: 207.699.4164 C: 207.671.7965	Project Title <b>107 VAUGHAN STREET</b> AFTER THE FACT PERMIT PORTLAND, MAINE	Sheet Status <b>PERMIT SET</b>	
			Project Number <b>16.98</b>	Date <b>23 FEBRUARY 2018</b>
Revisions 1 . 2 . 3 .	Sheet Title <b>BASEMENT &amp; LOWER LEVEL PLANS - ORIGINAL</b>	Drawn By <b>CAM</b>		
		Sheet Scale <b>1/4" = 1'-0" UNO</b>		
		CAD File Number <b>107 VAUGHN ST</b>		
			<b>A1.1</b>	