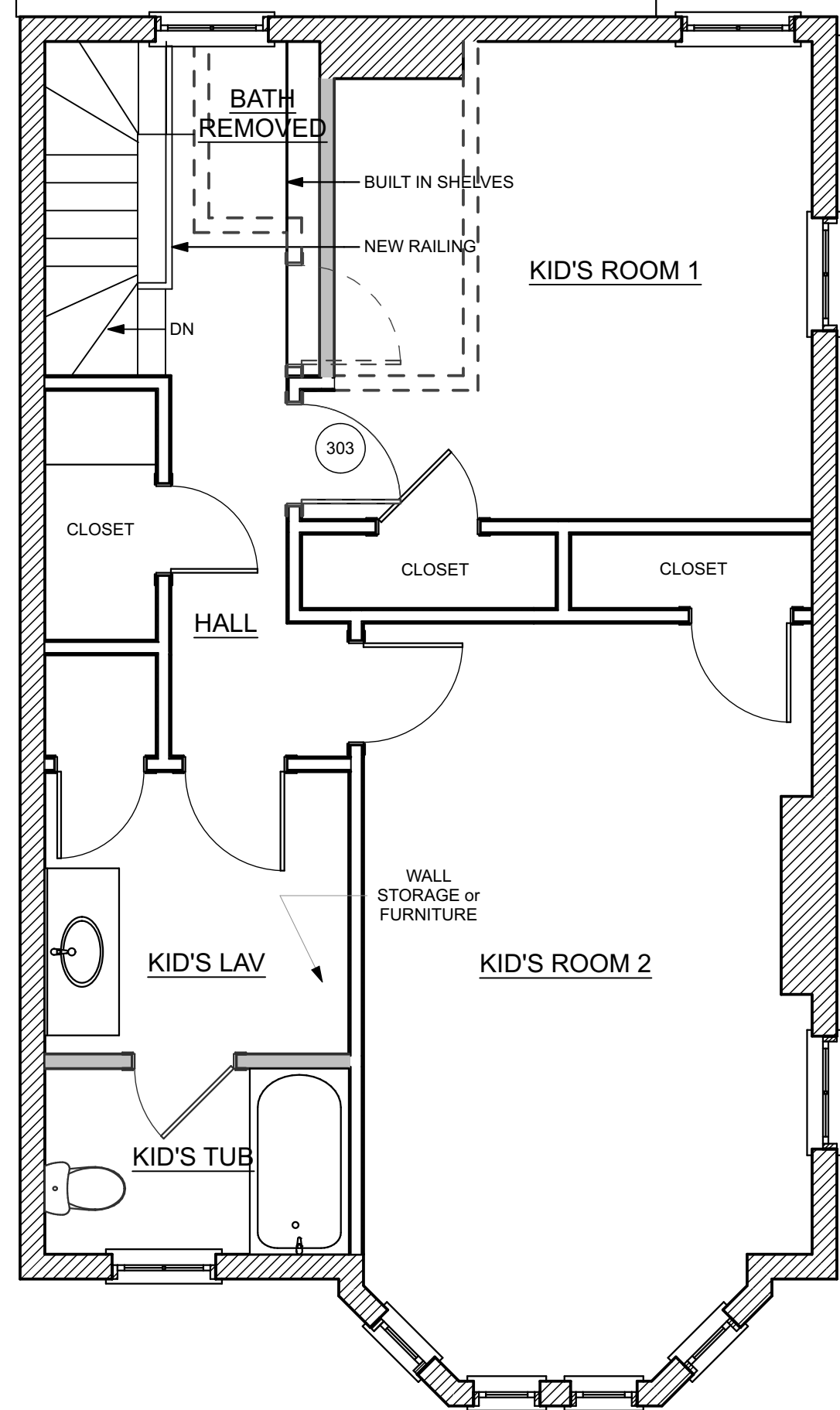
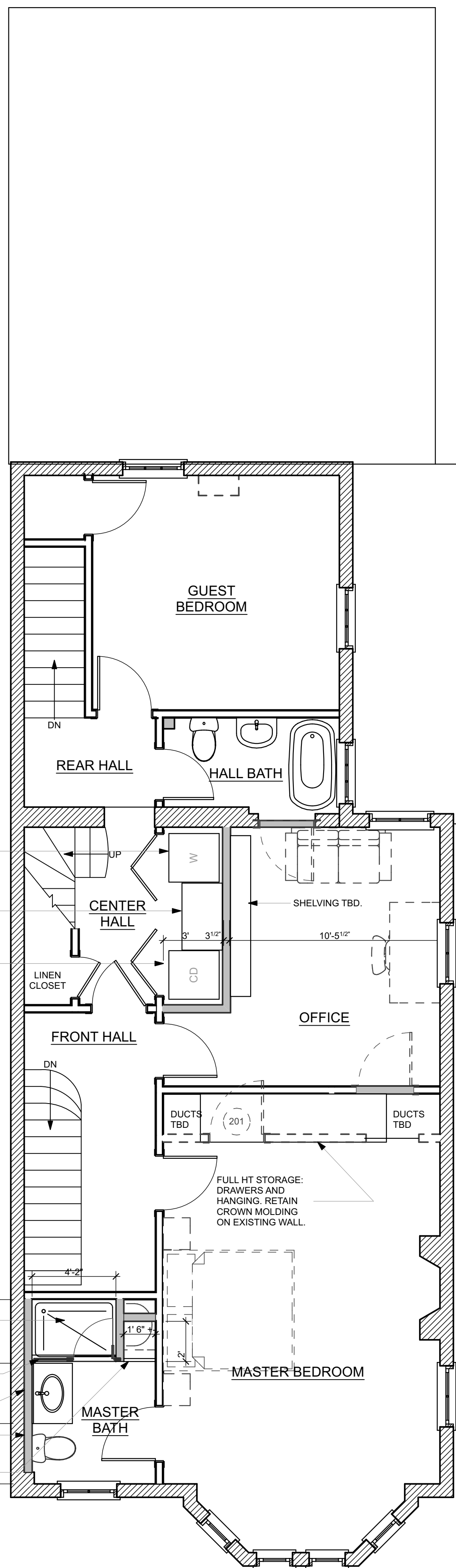


GENERAL NOTES:

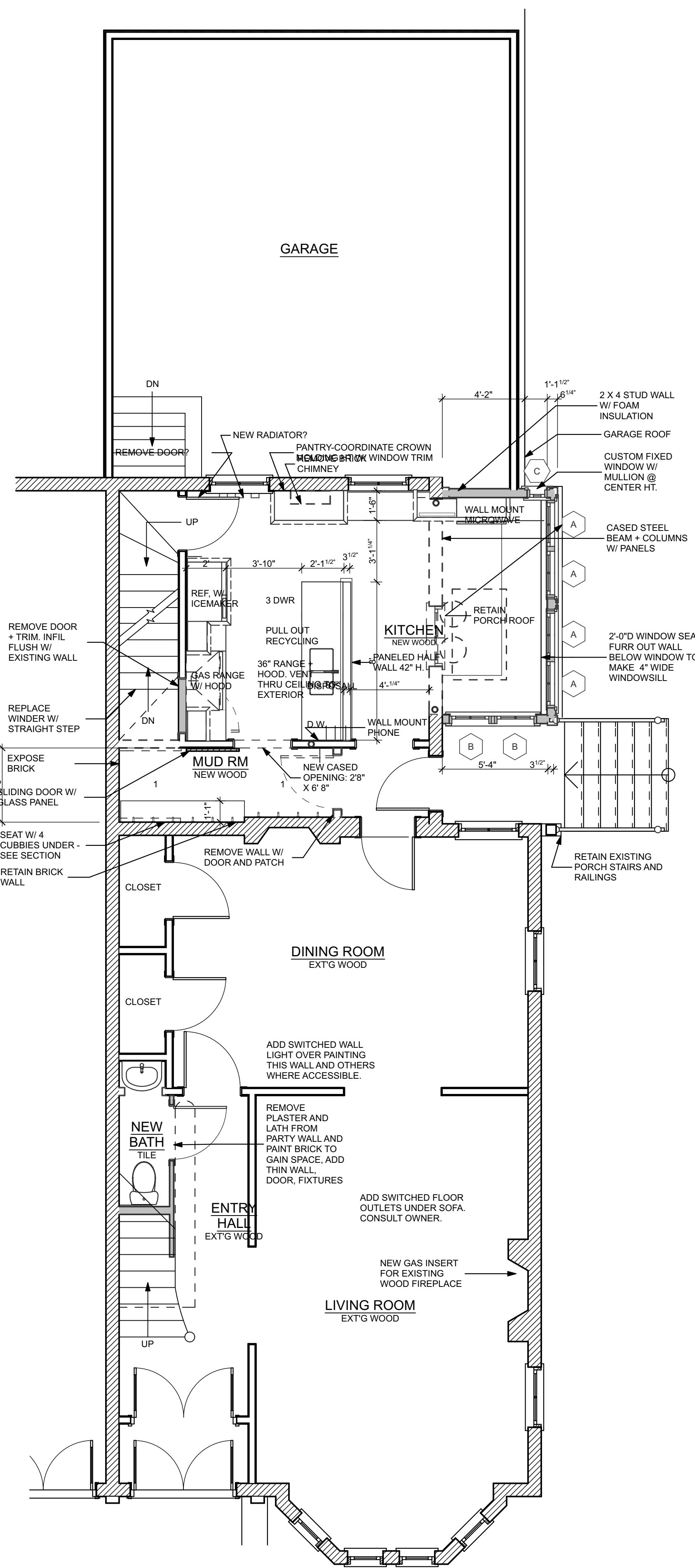
1. VERIFY ALL DIMENSIONS IN THE FIELD. REPORT ALL DISCREPANCIES TO ARCHITECT PRIOR TO COMMENCEMENT WITH WORK.
2. NOTED DIMENSIONS TAKE PRECEDENT OVER SCALED DIMENSIONS. LARGE DETAILS TAKE PRECEDENT OVER SMALL SCALED DETAILS.
3. ALL NEW CONSTRUCTION DIMENSIONS ARE ROUGH OPENINGS UNLESS NOTED OTHERWISE. DIMENSIONS TO EXISTING WALL CONSTRUCTION ARE TO FINISH SURFACE.
4. PROVIDE SOLID BLOCKING FOR ALL CABINETS AND ACCESSORIES. REVIEW INTERIOR ELEVATIONS AND DETAILS FOR LOCATIONS.
5. ALL EXISTING WOOD WINDOWS TO BE REPLACED W/ LORANGER TRIMLINE WINDOWS TO MATCH EXISTING SITELINES AND MULLION PATTERNS.



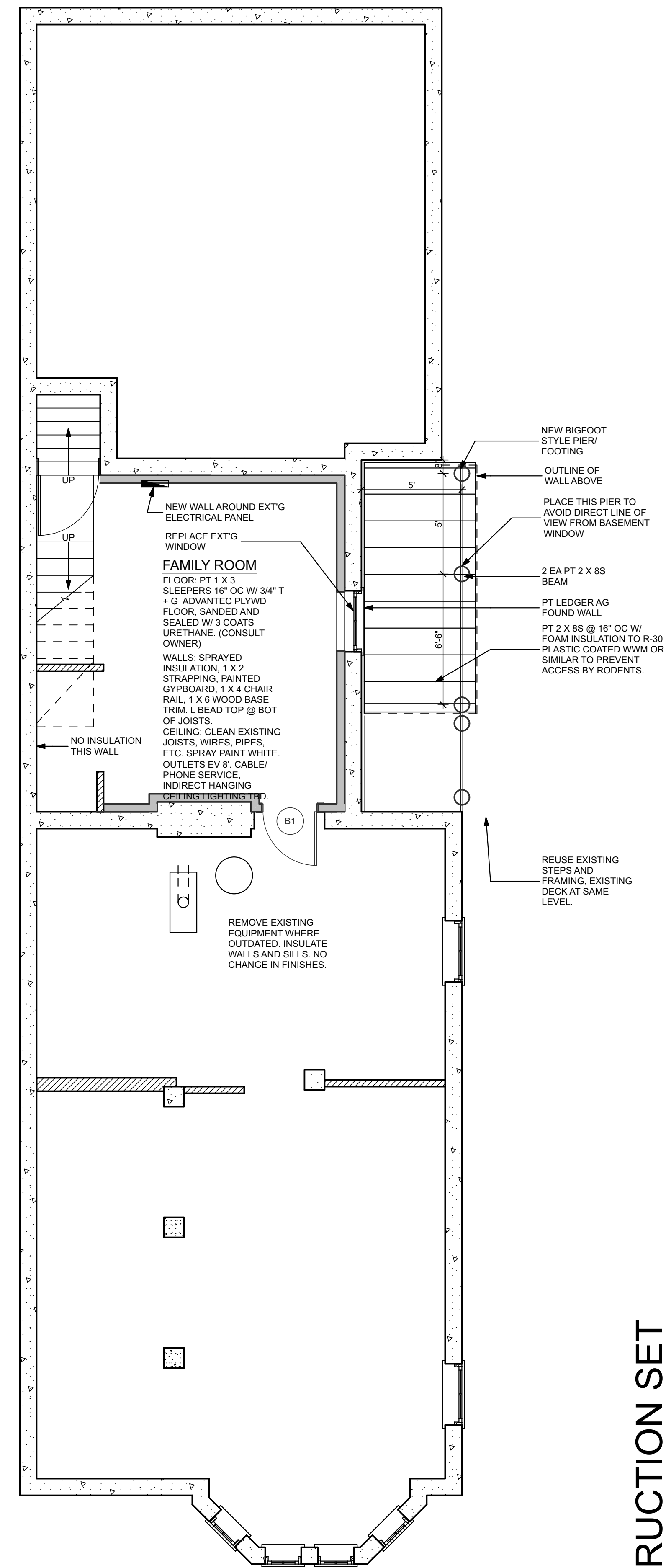
4 3RD FLOOR PLAN
A1 SCALE: 1/4" = 1'-0"



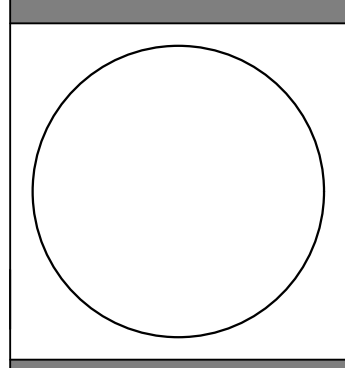
2 SECOND FLOOR PLAN
A1 SCALE: 1/4" = 1'-0"



2 FIRST FLOOR PLAN
A1 SCALE: 1/4" = 1'-0"



2 BASEMENT PLAN
A1 SCALE: 1/4" = 1'-0"



WHIPPLE | CALLENDER ARCHITECTS

136 PLEASANT AVE.
PORTLAND, ME 04103
P 207.775.2696
F 207.775.3631
www.whipplecallender.com

DESCRIPTION	DATE	MARK

DATE: 5.21.14
CHECKED BY: JW
DRAWN BY: JP
JOB: 13-CSP
SHEET TITLE: FLOOR PLANS

CONSTRUCTION SET

A1 FLOOR PLANS : Plotted on 12/29/14 at 9:40 AM by John Whipple. File Path: /Volumes/LaCie Disk/ WCA Projects/2013 Projects/CSP Carroll Street Portland/CSP ArchCAD Models/CSP jw.pln