

Project	
Revision	
Date	9/15/15 FOR BID
Rev. No.	

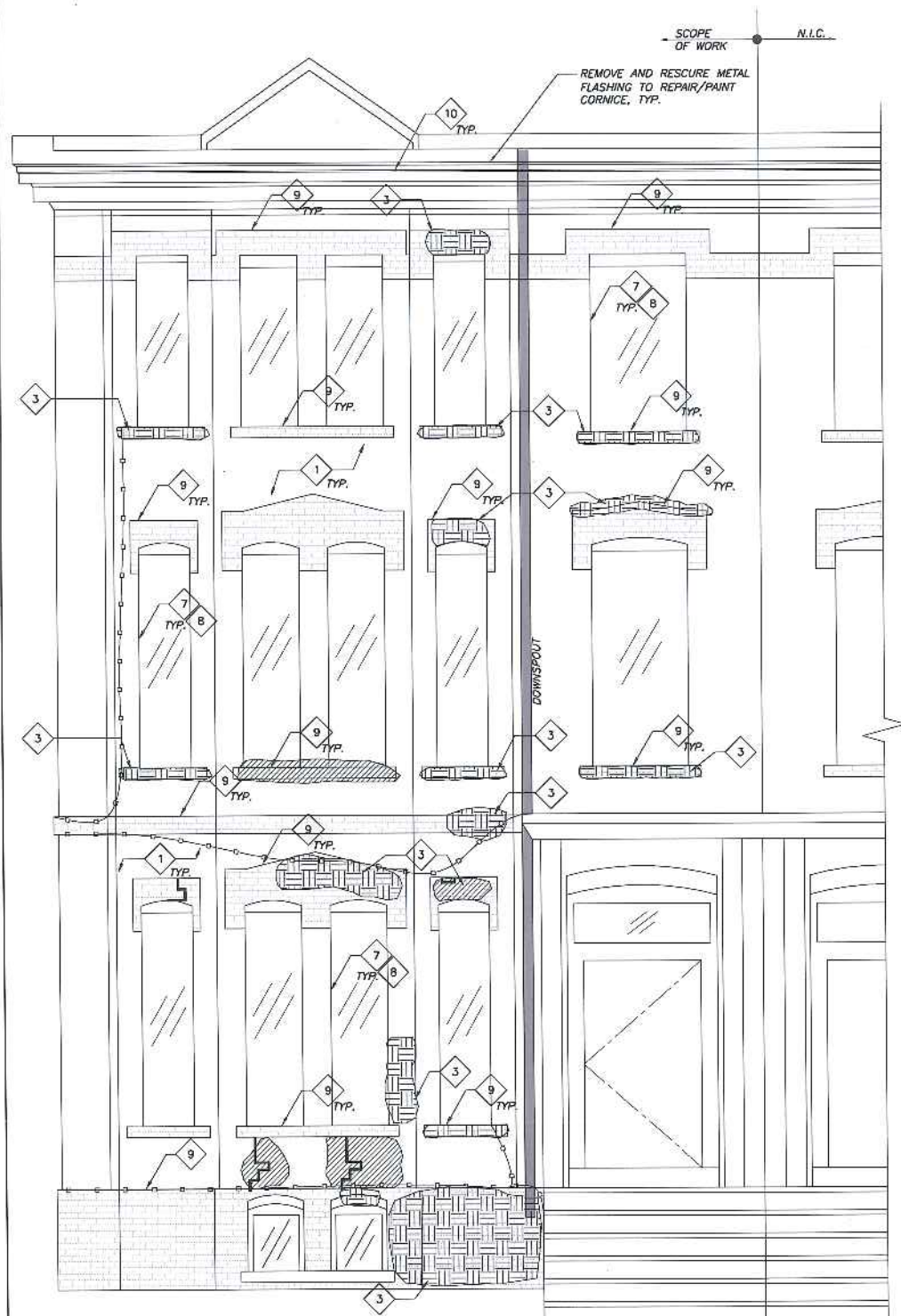
FACADE REPAIRS
 7 CARROLL STREET
 PORTLAND, ME
 ELEVATION

Designed	JMM	Scale	AS NOTED
Drawn	KB	Date	7/21/15
Checked	PBB	Becker Job Number	3587

S1

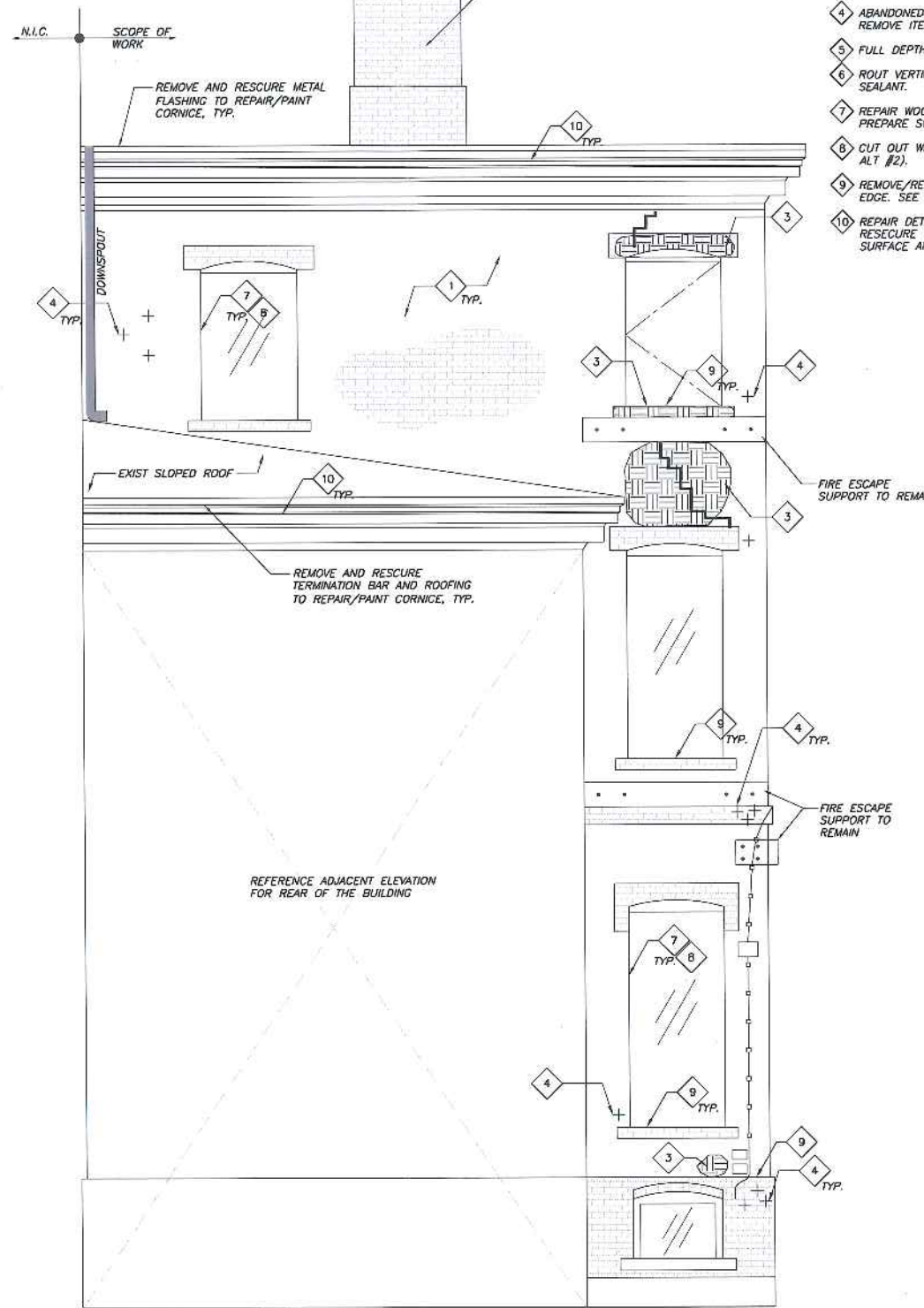
FACADE REPAIR KEYED NOTES

- 1 CLEAN MASONRY FACADE 100%, TYP.
- 2 REMOVE ALL VEGETATION FROM MASONRY.
- 3 CUT OUT BRICK MASONRY JOINTS AND REPOINT. REPLACE CRACKED MASONRY UNITS. SEE DWG S4.
- 4 ABANDONED WALL FEATURE, BRACKET OR PENETRATION. REMOVE ITEM AND REPAIR MASONRY.
- 5 FULL DEPTH BRICK MASONRY WALL REBUILD. SEE DWG S4.
- 6 ROUT VERTICAL JOINT AND SEAL WITH BACKER ROD AND SEALANT.
- 7 REPAIR WOOD FRAMES WITH WOOD EPOXY FILLER AND PREPARE SURFACE AND PAINT. (ADD ALT #2)
- 8 CUT OUT WINDOW PERIMETER SEALANT AND RESEAL. (ADD ALT #2).
- 9 REMOVE/REPLACE EXIST DETERIORATED WASH FROM BRICK EDGE. SEE DWG S4.
- 10 REPAIR DETERIORATED PORTIONS OF WOOD CORNICE. RESECURE WOOD CORNICE AND ELEMENTS. PREPARE SURFACE AND PAINT. (ADD ALT #1).



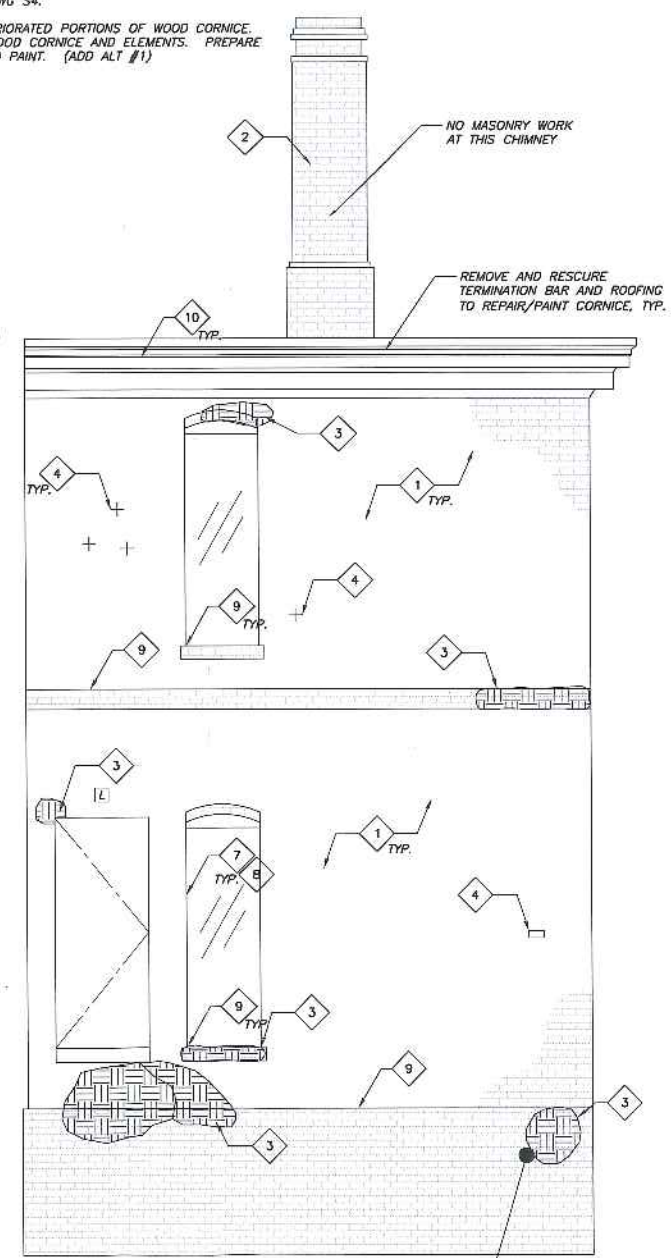
SOUTH ELEVATION A
 3/8"=1'-0"

- KEY:**
- AREAS OF BRICK MASONRY WALL REBUILD.
 - AREAS OF BRICK MASONRY JOINTS REPOINTING.
 - BRICK MASONRY STEP CRACKING. SEE KEYED NOTE #3.
 - ABANDONED EMBEDDED METAL BRACKET (REMOVE).
 - ELECTRICAL OR CABLE WIRING SECURED TO FACADE.



NORTH ELEVATION B
 3/8"=1'-0"

- KEY:**
- AREAS OF BRICK MASONRY WALL REBUILD.
 - AREAS OF BRICK MASONRY JOINTS REPOINTING.
 - BRICK MASONRY STEP CRACKING. SEE KEYED NOTE #3.
 - ABANDONED EMBEDDED METAL BRACKET (REMOVE).
 - ELECTRICAL OR CABLE WIRING SECURED TO FACADE.



EAST ELEVATION
 3/8"=1'-0"

- KEY:**
- AREAS OF BRICK MASONRY WALL REBUILD.
 - AREAS OF BRICK MASONRY JOINTS REPOINTING.
 - BRICK MASONRY STEP CRACKING. SEE KEYED NOTE #3.
 - ABANDONED EMBEDDED METAL BRACKET (REMOVE).
 - ELECTRICAL OR CABLE WIRING SECURED TO FACADE.

THIS DRAWING IS AN INSTRUMENT OF SERVICE AND SHALL REMAIN THE PROPERTY OF BECKER STRUCTURAL ENGINEERS INC. IT SHALL NOT BE REPRODUCED, COPIED, LENT OR DISPOSED OF DIRECTLY OR INDIRECTLY NOR USED FOR ANY PURPOSE OTHER THAN FOR WHICH IT IS SPECIFICALLY FURNISHED AND MUST BE RETURNED TO BECKER STRUCTURAL ENGINEERS INC. ON COMPLETION OF WORK, IF REQUESTED.