

© 2010 TFH ARCHITECTS

FIRE ESCAPE RENOVATIONS
7 CARROLL STREET
PORTLAND, MAINE

TFH ARCHITECTS
80 MIDDLE STREET
PORTLAND MAINE 04101
TELEPHONE 207 775 6141
ARCHITECTURE PLANNING

CONSULTANTS:

REVISIONS:

DATE:

PROJECT No. 1025

DRAWN BY: RJS

CHECKED BY: TST

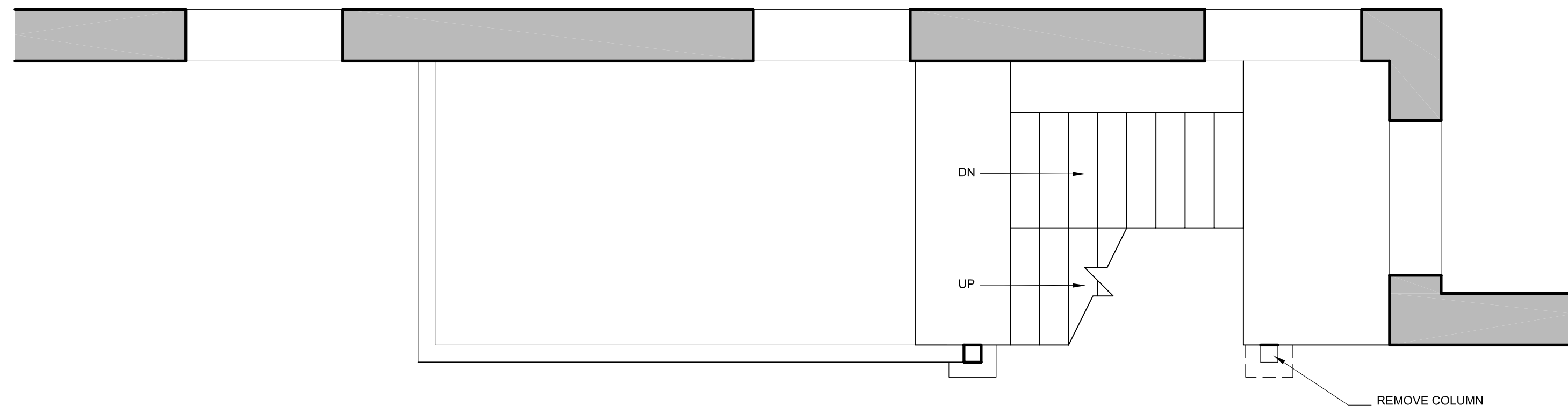
SCALE: AS NOTED

SHEET TITLE:
**FIRE ESCAPE
PLANS AND
ELEVATION**

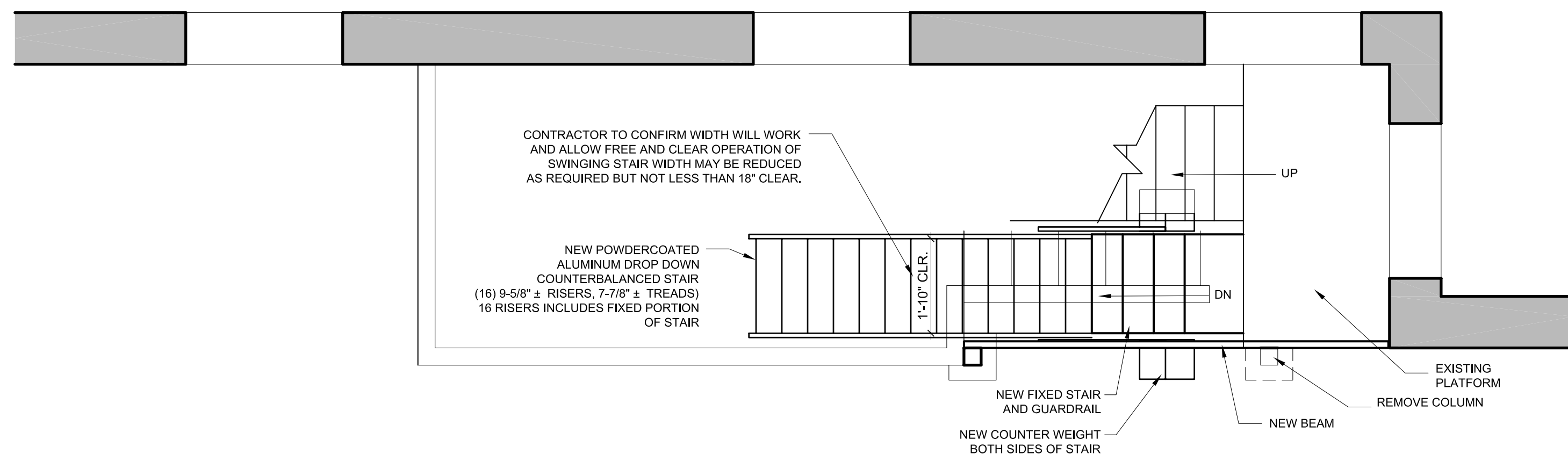
A1.1

NOTES:

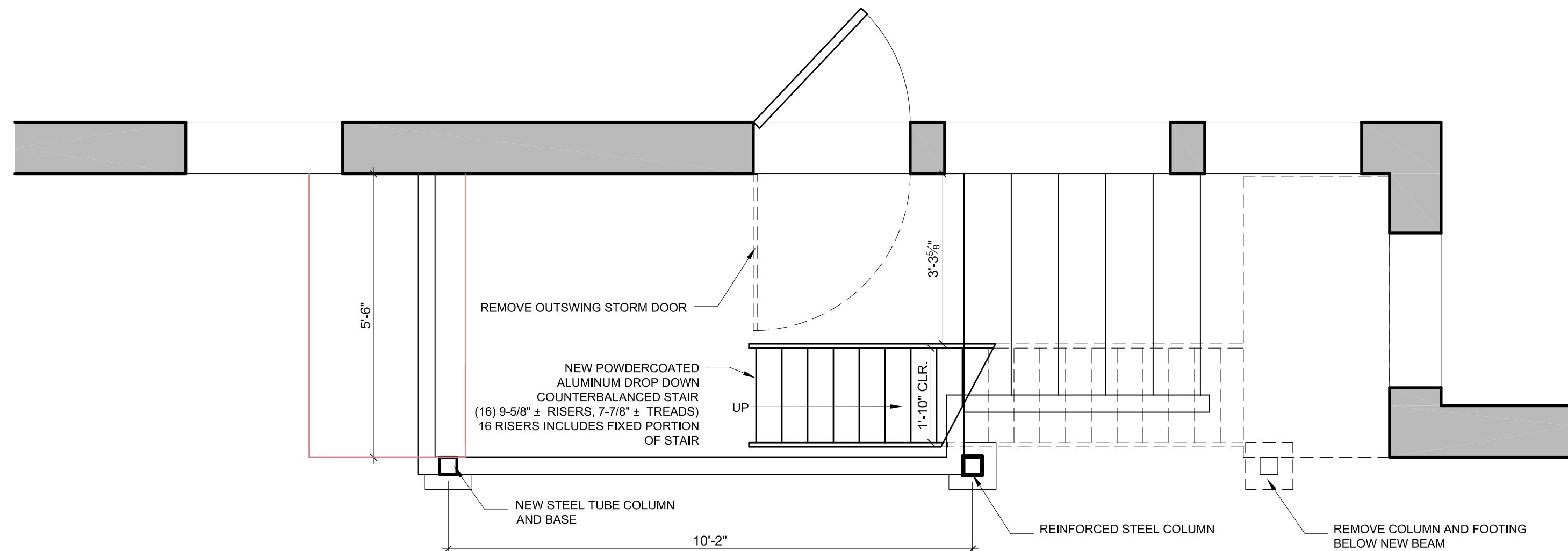
- 1.) CONTRACTOR TO PROVIDE SHOP DRAWINGS OF ALL WORK FOR APPROVAL BY ARCHITECT PRIOR TO FABRICATION
- 2.) ALL EXISTING STEEL TO BE CLEANED, SANDBLASTED PREPED AND PAINTED BLACK
- 3.) ALL NEW STEEL TO BE GALVANIZED AND PAINTED BLACK
- 4.) CONTRACTOR TO VERIFY ALL DIMENSIONS IN FIELD PARTICULARLY THE NEW STAIR RISE AND RUN
- 5.) CONTRACTOR TO CONFIRM CLEARANCES TO ALLOW CLEAR OPERATION OF STAIR WITH ALL EXISTING ELEMENTS IF CONFLICTS ARE DISCOVERED CONTRACTOR TO CONTACT THE ARCHITECT IN WRITING PRIOR TO CONSTRUCTION OF ANY STAIR COMPONENTS



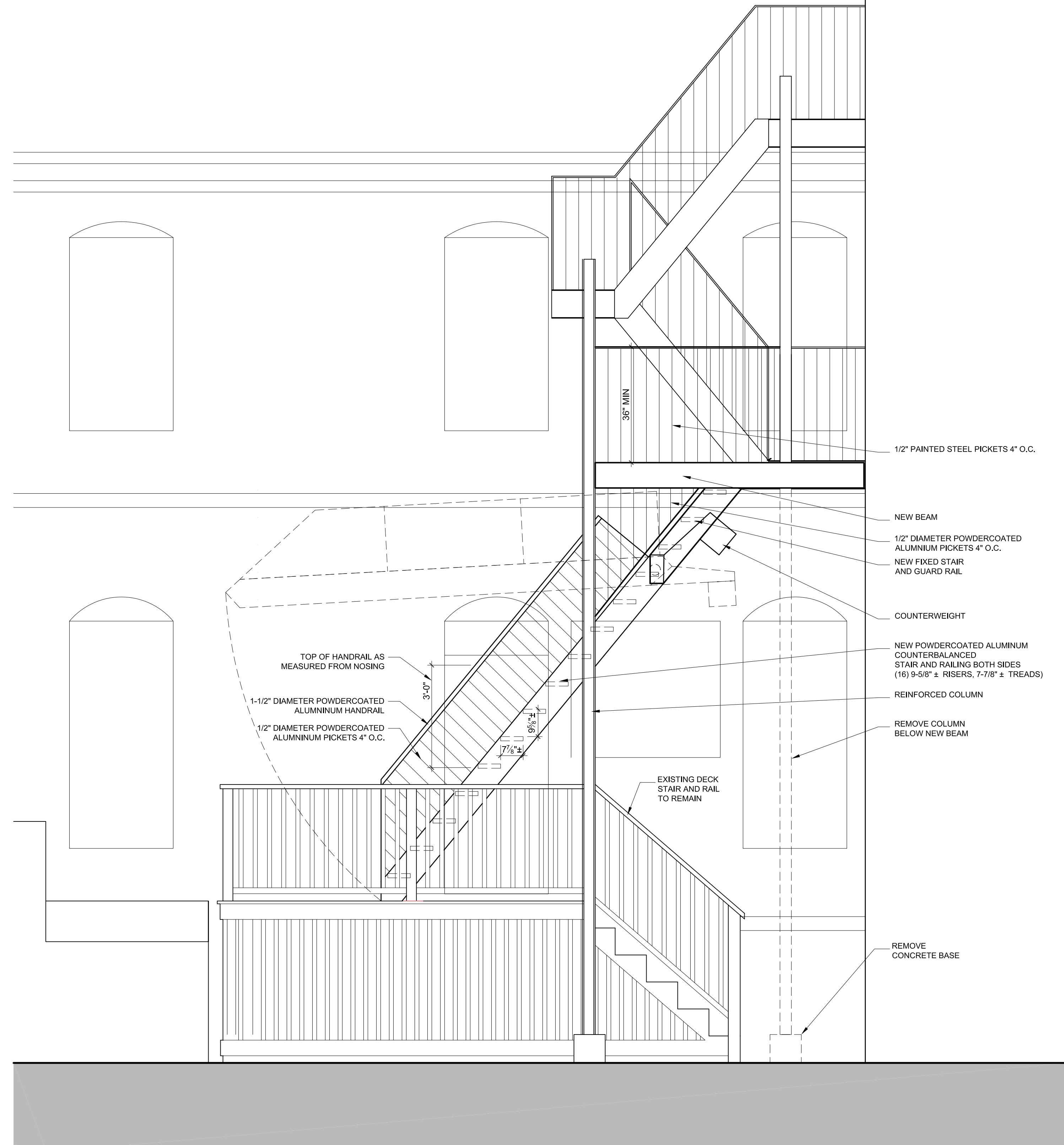
4 PLAN AT SECOND FLOOR MID LANDING
A1.1 1/2" = 1'-0"



3 PLAN AT SECOND FLOOR LEVEL
A1.1 1/2" = 1'-0"



2 PLAN AT FIRST FLOOR LEVEL
A1.1 1/2" = 1'-0"



1 ELEVATION
A1.1 1/2" = 1'-0"