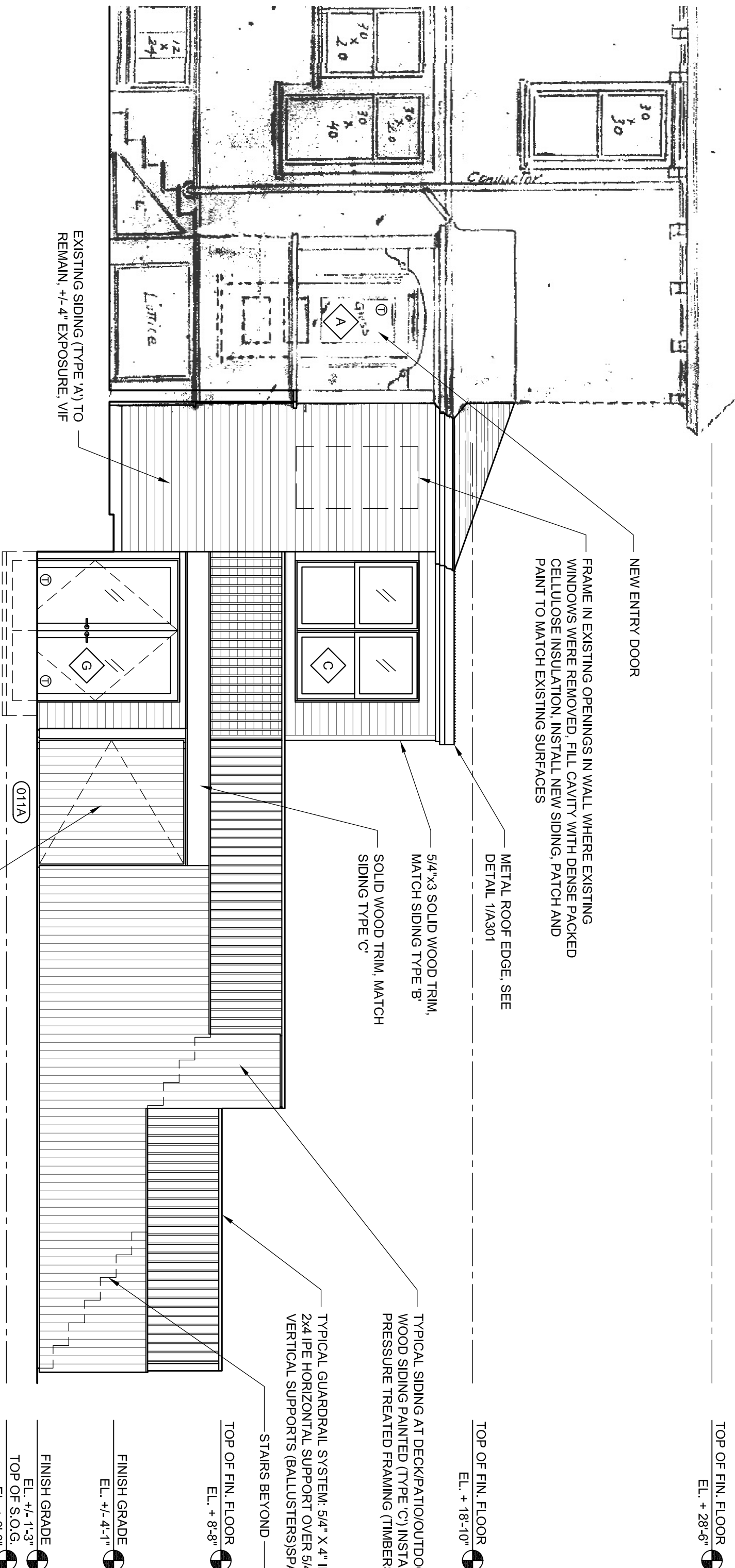


3 EAST BUILDING ELEVATION
SCALE: 1/4" = 1'-0"

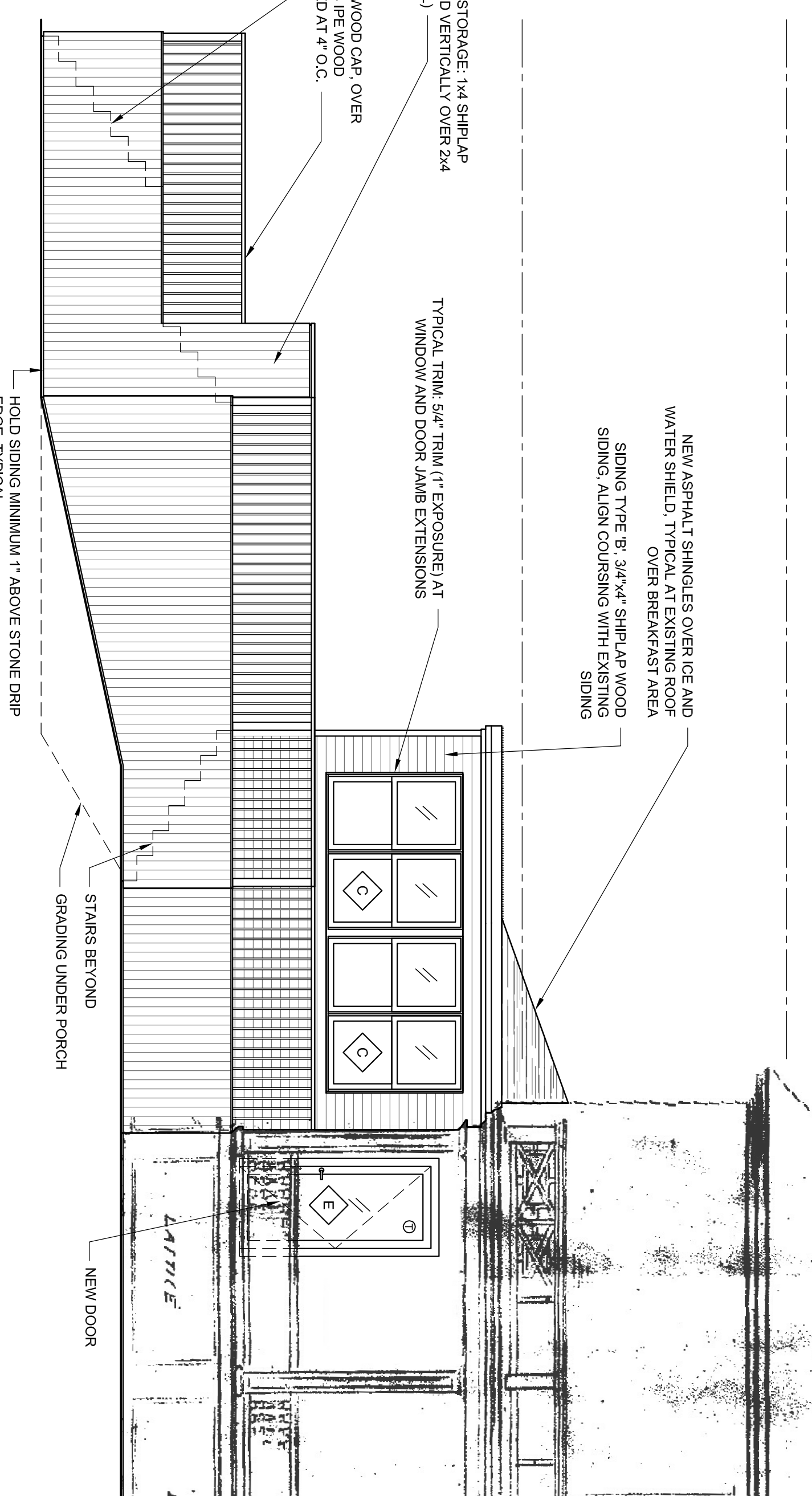
- WINDOW TYPE NOTES:
1. INDICATES TEMPERED GLAZING
 2. IN ALL OPERABLE WINDOWS & DOORS CHEVRON POINTS TO HINGED EDGE
 3. HINGED EDGE



4 PHOTO SHOWING INTENT FOR FENCE / GATE LATTICE
SCALE: 1/4" = 1'-0"



1 SOUTH BUILDING ELEVATION
SCALE: 1/4" = 1'-0"



2 NORTH BUILDING ELEVATION
SCALE: 1/4" = 1'-0"