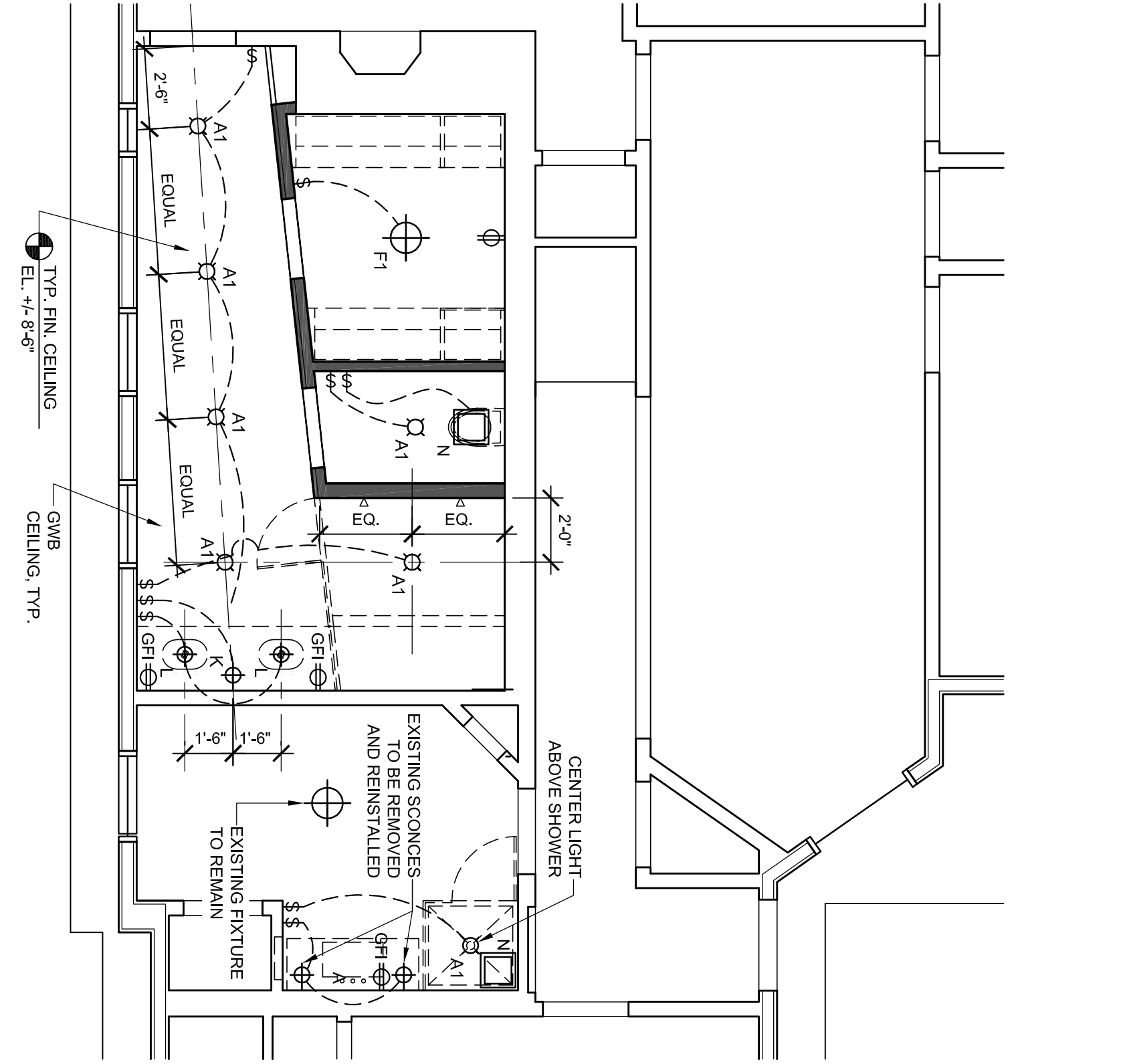
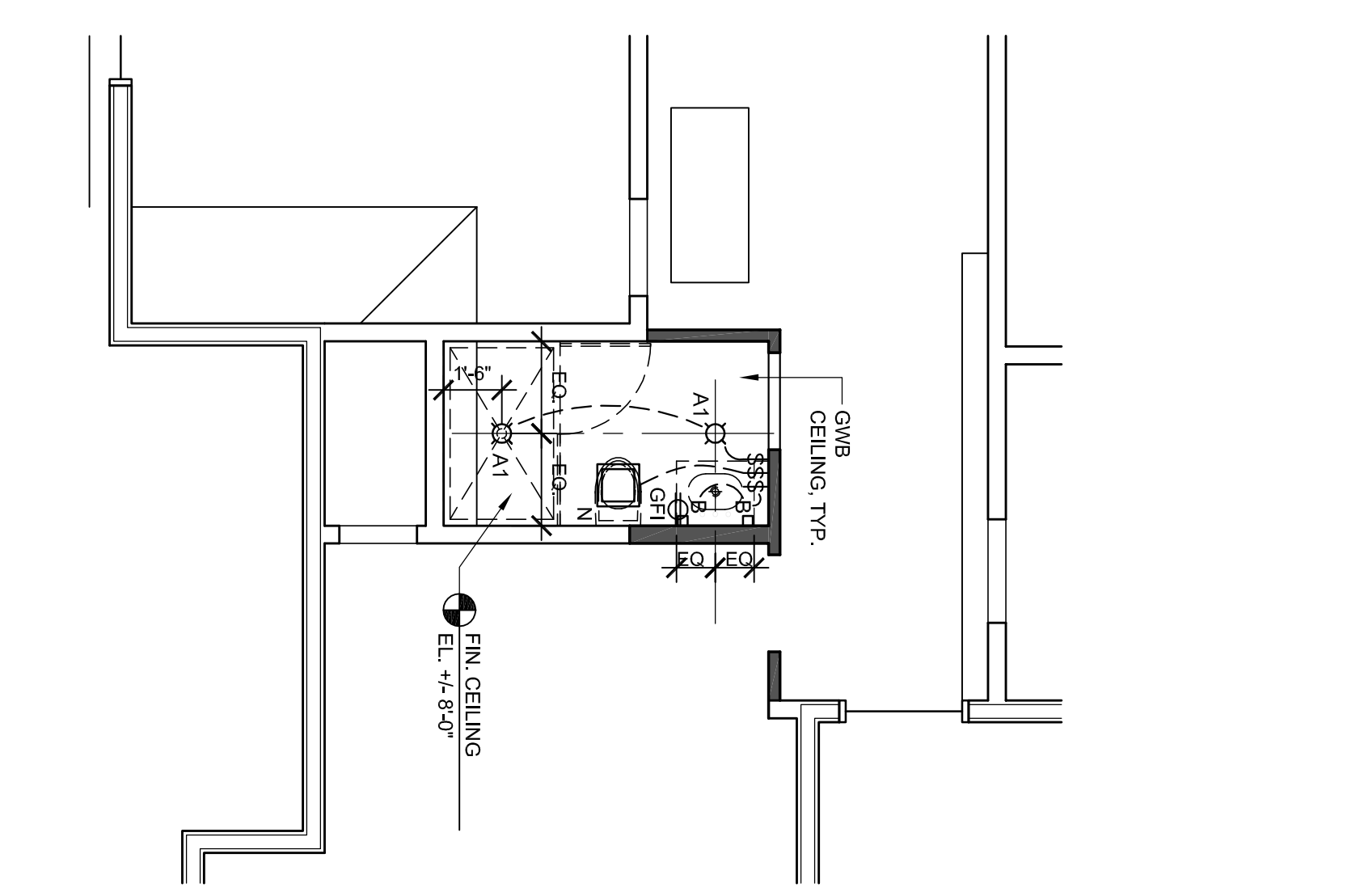


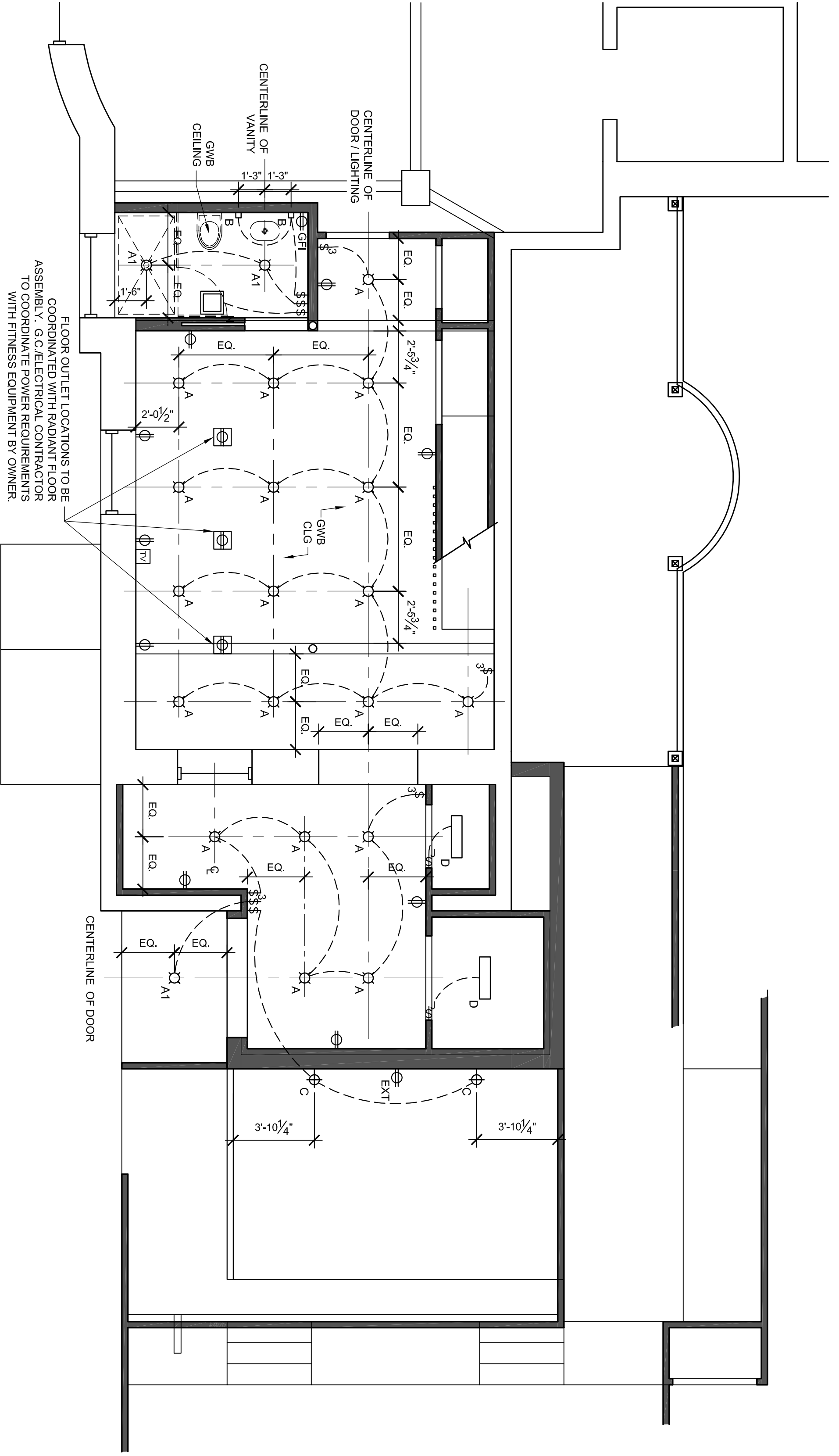
2 FIRST FLOOR ELECTRICAL/LIGHTING PLAN
 SCALE: 1/4" = 1'-0"



3 SECOND FLOOR ELECTRICAL/LIGHTING PLAN
 SCALE: 1/4" = 1'-0"



4 THIRD FLOOR ELECTRICAL/LIGHTING PLAN
 SCALE: 1/4" = 1'-0"



1 LOWER LEVEL ELECTRICAL/LIGHTING PLAN
 SCALE: 1/4" = 1'-0"

ELECTRICAL SCHEDULE	
☐	DUPLEX 110V OUTLET
☐	DUPLEX 110V OUTLET W/ GROUND FAULT INTERRUPT
☐	DUPLEX 110V OUTLET INDICATED FOR EXTERIOR USE
☐	DUPLEX 110V FLOOR OUTLET
☐	QUAD 110V OUTLET
☐	DEDICATED 110V OUTLET
☐	DUPLEX 220V OUTLET
☐	CABLE TV OUTLET
LIGHTING FIXTURE SCHEDULE	
☐	4" RECESSED LED DOWNLIGHT, GWB CEILING
☐	4" RECESSED LED DOWNLIGHT, GWB CEILING, SHOWERLIGHT
☐	LINEAR LED LIGHT
☐	EXTERIOR WALL SCONCE
☐	LINEAR CLOSET LIGHT
☐	EXTERIOR WALL SCONCE
☐	SURFACE MOUNT CEILING LIGHT
☐	SURFACE MOUNT CEILING LIGHT
☐	SURFACE MOUNT PICTURE LIGHT
☐	4" RECESSED LED DOWNLIGHT, WOOD CEILING
☐	4" RECESSED LED DOWNLIGHT, WOOD CEILING, SHOWERLIGHT
☐	PENDANT LIGHT
☐	WALL SCONCE
☐	PENDANT LIGHT
☐	UNDER CABINET LED LIGHT
☐	EXHAUST FAN
☐	RECESSED STEP LIGHT (EXTERIOR)
☐	SURFACE MOUNT WALL SCONCE (EXTERIOR)
☐	IN GROUND EXTERIOR LIGHT

- GENERAL NOTES:**
- ALL LIGHT SWITCHES SHALL BE INSTALLED ON INSIDE OF ROOM BEING LIGHTED AND ON WALL TYPICAL. TOP OF SWITCH COVERAGE TO BE 48" ABOVE FINISH FLOOR.
 - ALL LIGHTING TO BE DIMMABLE EXCEPT TYPE C, D, F, I, M, O, P AND Q. CONNECT TO DIMMER SWITCH BY LUTRON. TYPICAL.
 - LIGHTING LAYOUT AND DIMENSIONS ARE SHOWN FOR INTENT. EXISTING FRAMING SHALL REMAIN. ELECTRICAL CONTRACTOR SHALL PROPOSE REVISIONS TO THE LAYOUT BASED ON CONFLICTS WITH EXISTING FRAMING. ELECTRICAL CONTRACTOR AND BUILDER SHALL MEET WITH OWNER AND ARCHITECT PRIOR TO INSTALLATION OF LIGHTING TO REVIEW INTENT AND CONFIRM APPROVED LAYOUT.
 - CENTER LIGHTING FIXTURE TYPE D IN CLOSET 000 AND 004. CENTER LIGHTING FIXTURE TYPE A1 AND TYPE F IN WALL/CLOSET 289 AND TOILET 284.
 - ALL LIGHTING INDICATED ON FIRST FLOOR SHALL BE CONTROLLED BY LUTRON GRAPHIK EYE LOCATED IN KITCHEN PANTRY OR AS DETERMINED BY OWNER/ARCHITECT/ELECTRICAL CONTRACTOR/BUILDER. ELECTRICAL CONTRACTOR SHALL MEET WITH OWNERS AND ARCHITECT PRIOR TO INSTALLATION OF LIGHTING AND LIGHTING CONTROL WIRING TO REVIEW INTENT AND CONFIRM APPROVED LAYOUT.
 - ALL INDICATED KEYPADS SHALL BE DAISY CHAINED USING LUTRON YELLOW WIRING AND HOME RUN TO GRAPHIK EYE LOCATED IN KITCHEN PANTRY AS INDICATED.
 - ALL LIGHTING SWITCHES AND ELECTRICAL OUTLETS ARE SHOWN FOR INTENT. ELECTRICAL CONTRACTOR SHALL VERIFY ALL STUDS PRIOR TO INSTALLATION, FOR OWNER/ARCHITECT REVIEW AND SIGN-OFF.
 - SEE A101 AND A102 FOR LOCATION OF ADDITIONAL LIGHTING AT EXTERIOR PATIO AND DECK (TYPE E, O, P AND Q).

FLOOR OUTLET LOCATIONS TO BE COORDINATED WITH RADIANT FLOOR ASSEMBLY. G.C./ELECTRICAL CONTRACTOR TO COORDINATE POWER REQUIREMENTS WITH FITNESS EQUIPMENT BY OWNER.

LIGHTING FIXTURE ABOVE BREAKFAST TABLE SHALL BE PROVIDED BY G.C. CONTRACTOR. BREAKFAST TABLE AND ON WINDOWS AS SHOWN.

CENTERLINE OF WINDOW/SLIGHTS

CENTERLINE OF WINDOW/SLIGHTS

CENTERLINE OF WINDOW/SLIGHTS

CENTERLINE OF WINDOW/SLIGHTS

CENTERLINE OF WINDOW/SLIGHTS

CENTERLINE OF WINDOW/SLIGHTS

CENTERLINE OF WINDOW/SLIGHTS

CENTERLINE OF WINDOW/SLIGHTS

CENTERLINE OF WINDOW/SLIGHTS

CENTERLINE OF WINDOW/SLIGHTS

CENTERLINE OF WINDOW/SLIGHTS

CENTERLINE OF WINDOW/SLIGHTS

CENTERLINE OF WINDOW/SLIGHTS

CENTERLINE OF WINDOW/SLIGHTS

CENTERLINE OF WINDOW/SLIGHTS

CENTERLINE OF WINDOW/SLIGHTS

CENTERLINE OF WINDOW/SLIGHTS

CENTERLINE OF WINDOW/SLIGHTS

CENTERLINE OF WINDOW/SLIGHTS

CENTERLINE OF WINDOW/SLIGHTS

CENTERLINE OF WINDOW/SLIGHTS

CENTERLINE OF WINDOW/SLIGHTS

CENTERLINE OF WINDOW/SLIGHTS

CENTERLINE OF WINDOW/SLIGHTS

CENTERLINE OF WINDOW/SLIGHTS

CENTERLINE OF WINDOW/SLIGHTS

CENTERLINE OF WINDOW/SLIGHTS

CENTERLINE OF WINDOW/SLIGHTS

CENTERLINE OF WINDOW/SLIGHTS

CENTERLINE OF WINDOW/SLIGHTS

CENTERLINE OF WINDOW/SLIGHTS

CENTERLINE OF WINDOW/SLIGHTS

CENTERLINE OF WINDOW/SLIGHTS

CENTERLINE OF WINDOW/SLIGHTS

CENTERLINE OF WINDOW/SLIGHTS

CENTERLINE OF WINDOW/SLIGHTS

CENTERLINE OF WINDOW/SLIGHTS

CENTERLINE OF WINDOW/SLIGHTS

CENTERLINE OF WINDOW/SLIGHTS

CENTERLINE OF WINDOW/SLIGHTS

CENTERLINE OF WINDOW/SLIGHTS

CENTERLINE OF WINDOW/SLIGHTS

CENTERLINE OF WINDOW/SLIGHTS

CENTERLINE OF WINDOW/SLIGHTS

CENTERLINE OF WINDOW/SLIGHTS

CENTERLINE OF WINDOW/SLIGHTS

CENTERLINE OF WINDOW/SLIGHTS

CENTERLINE OF WINDOW/SLIGHTS

CENTERLINE OF WINDOW/SLIGHTS

CENTERLINE OF WINDOW/SLIGHTS

CENTERLINE OF WINDOW/SLIGHTS

CENTERLINE OF WINDOW/SLIGHTS

CENTERLINE OF WINDOW/SLIGHTS

CENTERLINE OF WINDOW/SLIGHTS

CENTERLINE OF WINDOW/SLIGHTS

CENTERLINE OF WINDOW/SLIGHTS

CENTERLINE OF WINDOW/SLIGHTS

CENTERLINE OF WINDOW/SLIGHTS

SCALE: 1/4" = 1'-0"

SCALE: 1/4" = 1'-0"

SCALE: 1/4" = 1'-0"

SCALE: 1/4" = 1'-0"

SCALE: 1/4" = 1'-0"

SCALE: 1/4" = 1'-0"

SCALE: 1/4" = 1'-0"

SCALE: 1/4" = 1'-0"

SCALE: 1/4" = 1'-0"

SCALE: 1/4" = 1'-0"

SCALE: 1/4" = 1'-0"

SCALE: 1/4" = 1'-0"

SCALE: 1/4" = 1'-0"

SCALE: 1/4" = 1'-0"

SCALE: 1/4" = 1'-0"

SCALE: 1/4" = 1'-0"

SCALE: 1/4" = 1'-0"

SCALE: 1/4" = 1'-0"

SCALE: 1/4" = 1'-0"

SCALE: 1/4" = 1'-0"

SCALE: 1/4" = 1'-0"

SCALE: 1/4" = 1'-0"

SCALE: 1/4" = 1'-0"

SCALE: 1/4" = 1'-0"

SCALE: 1/4" = 1'-0"

SCALE: 1/4" = 1'-0"

SCALE: 1/4" = 1'-0"

SCALE: 1/4" = 1'-0"

SCALE: 1/4" = 1'-0"

SCALE: 1/4" = 1'-0"

SCALE: 1/4" = 1'-0"

SCALE: 1/4" = 1'-0"

SCALE: 1/4" = 1'-0"

SCALE: 1/4" = 1'-0"

SCALE: 1/4" = 1'-0"

SCALE: 1/4" = 1'-0"

SCALE: 1/4" = 1'-0"

SCALE: 1/4" = 1'-0"

SCALE: 1/4" = 1'-0"

SCALE: 1/4" = 1'-0"

SCALE: 1/4" = 1'-0"

SCALE: 1/4" = 1'-0"

SCALE: 1/4" = 1'-0"

SCALE: 1/4" = 1'-0"

SCALE: 1/4" = 1'-0"

SCALE: 1/4" = 1'-0"

SCALE: 1/4" = 1'-0"

SCALE: 1/4" = 1'-0"

SCALE: 1/4" = 1'-0"

SCALE: 1/4" = 1'-0"

SCALE: 1/4" = 1'-0"

SCALE: 1/4" = 1'-0"

SCALE: 1/4" = 1'-0"

SCALE: 1/4" = 1'-0"

SCALE: 1/4" = 1'-0"

SCALE: 1/4" = 1'-0"

SCALE: 1/4" = 1'-0"

SCALE: 1/4" = 1'-0"

SCALE: 1/4" = 1'-0"

SCALE: 1/4" = 1'-0"

SCALE: 1/4" = 1'-0"

SCALE: 1/4" = 1'-0"

SCALE: 1/4" = 1'-0"

SCALE: 1/4" = 1'-0"

SCALE: 1/4" = 1'-0"

SCALE: 1/4" = 1'-0"