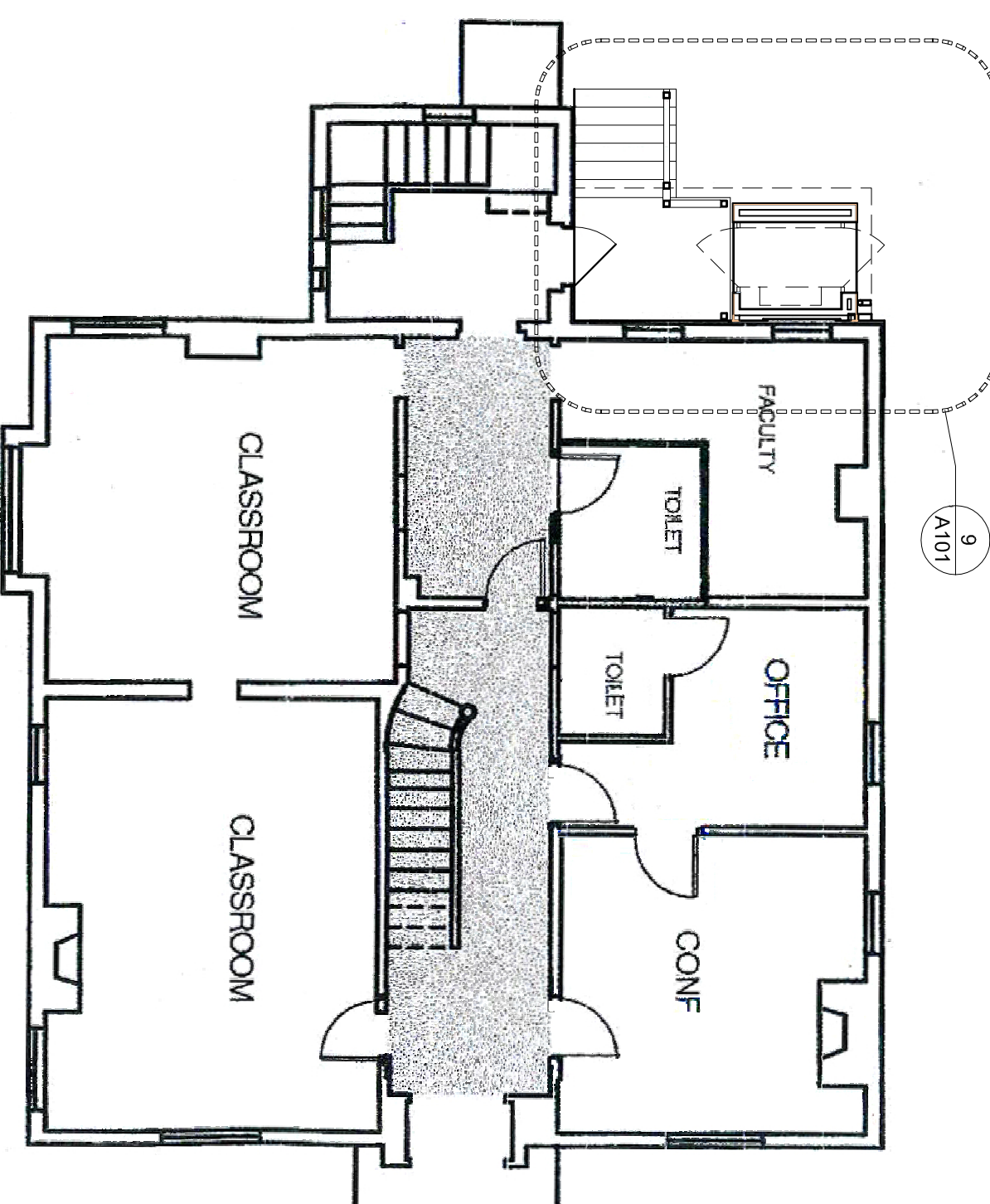


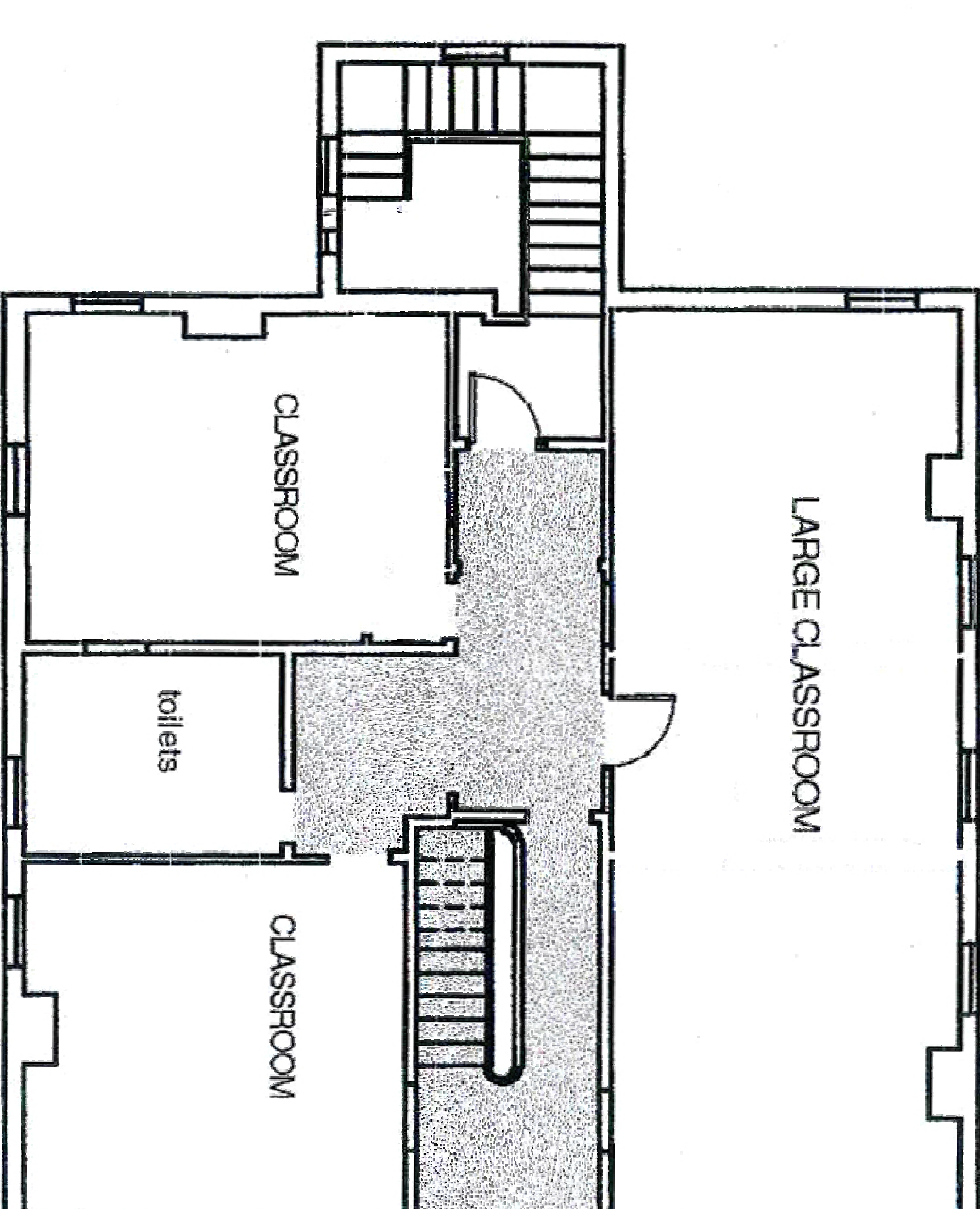
1 Site Plan
SCALE: 1/32" = 1'-0"



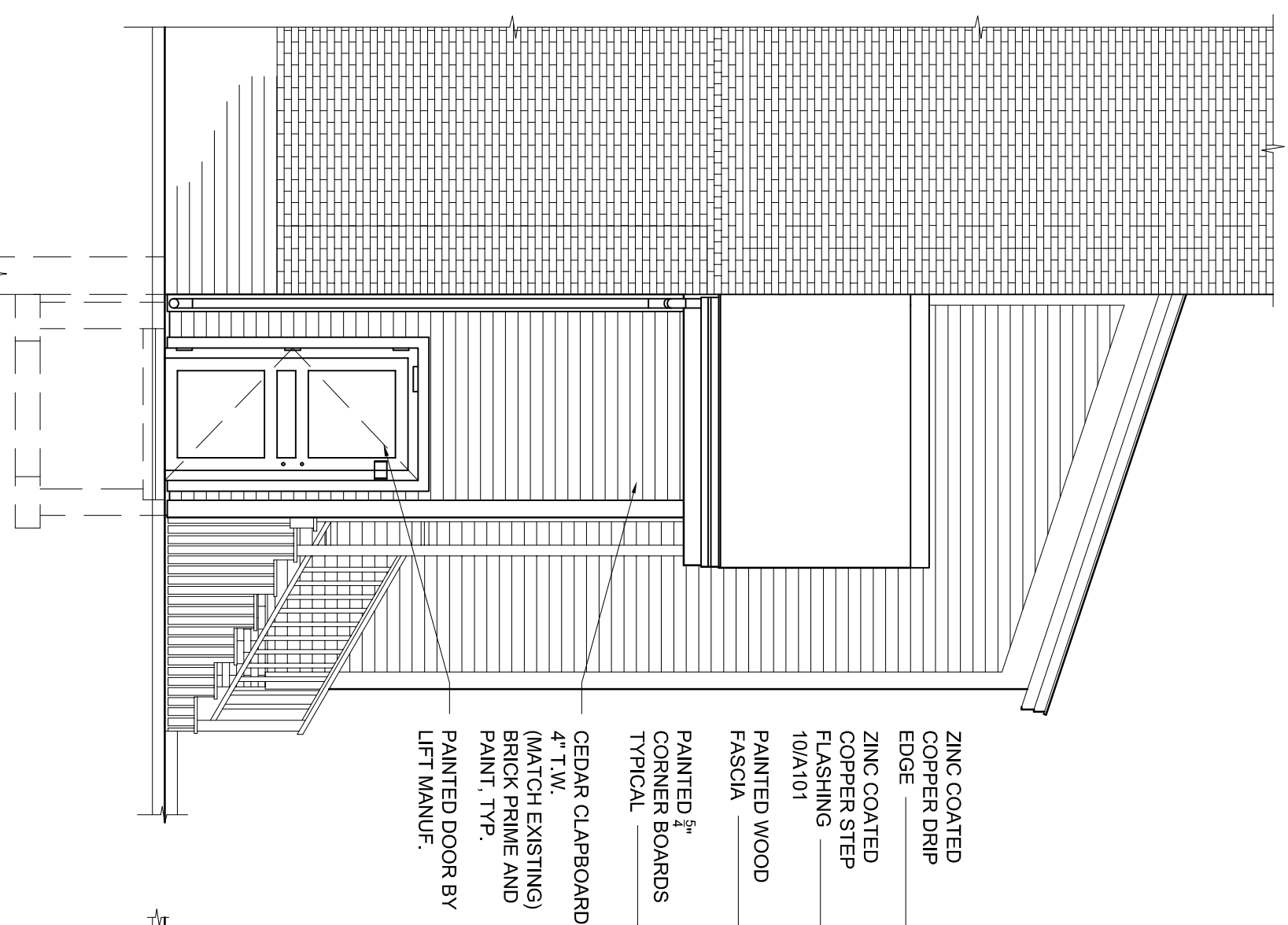
2 Lower Level Floor Plan
SCALE: 1/8" = 1'-0"



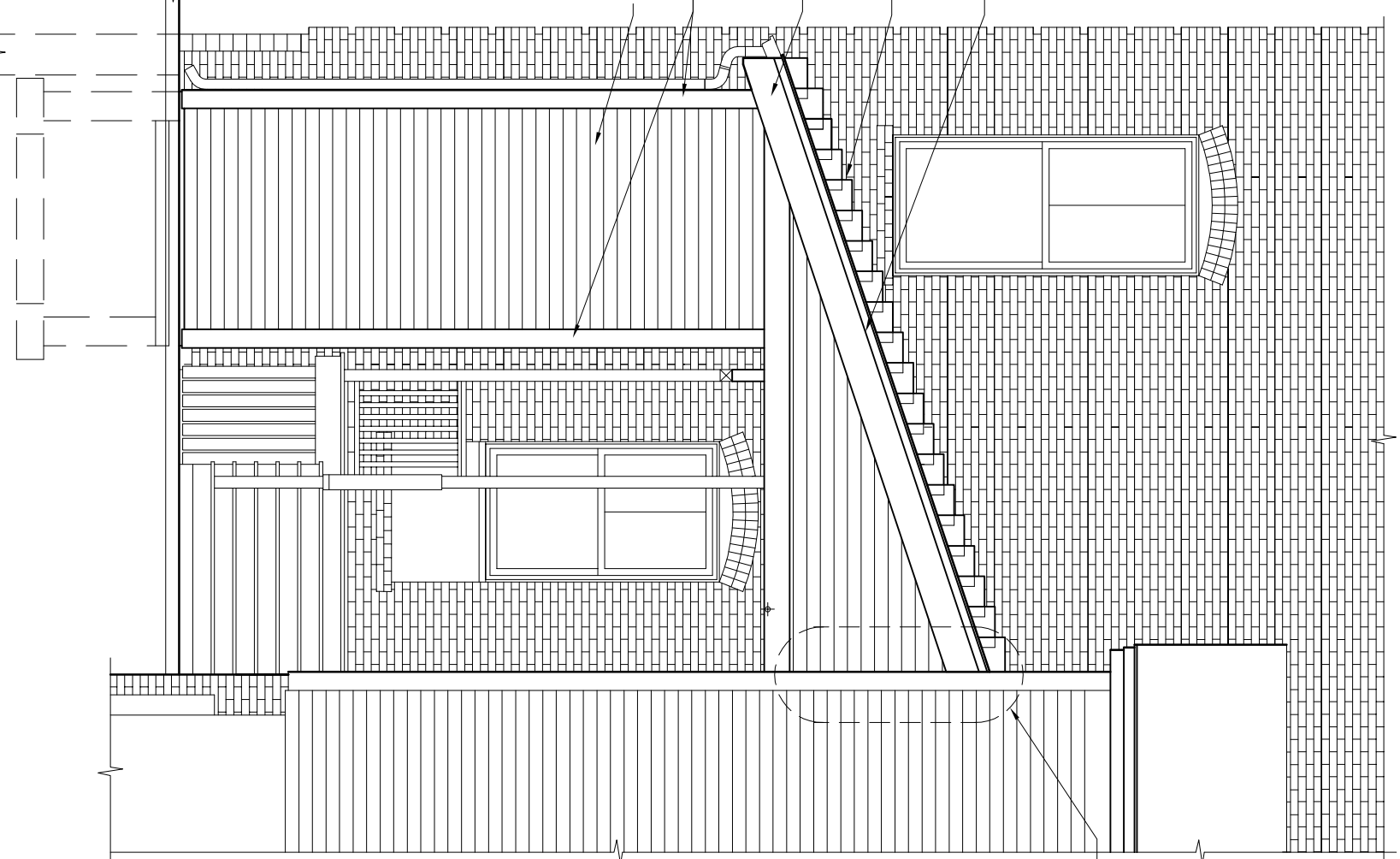
3 First Floor Plan
SCALE: 1/8" = 1'-0"



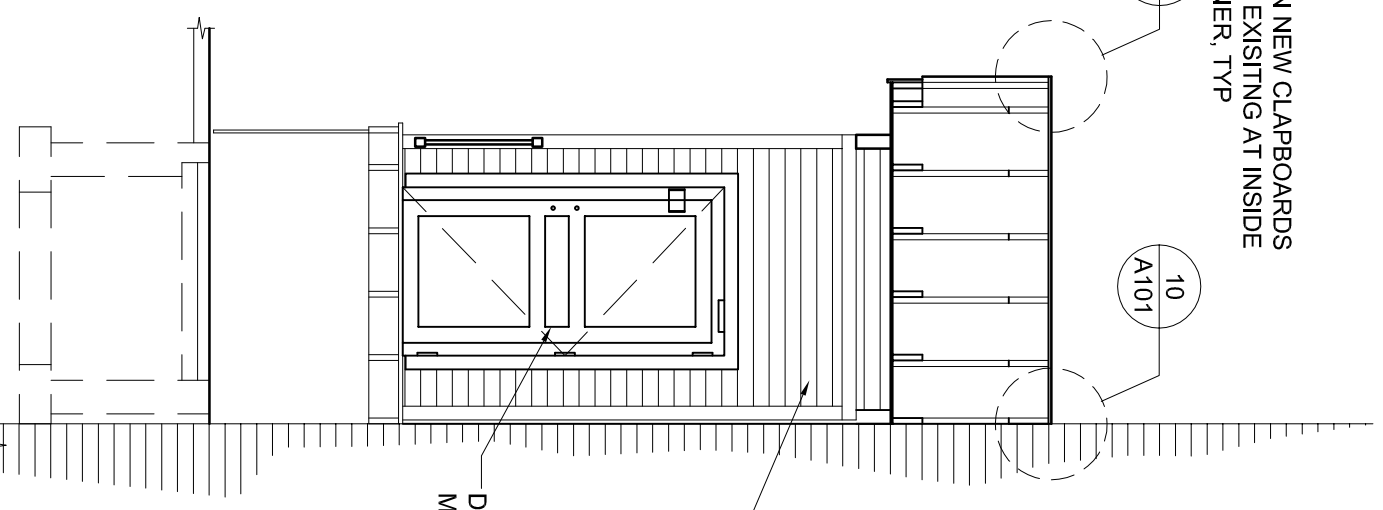
4 Second Floor Plan
SCALE: 1/8" = 1'-0"



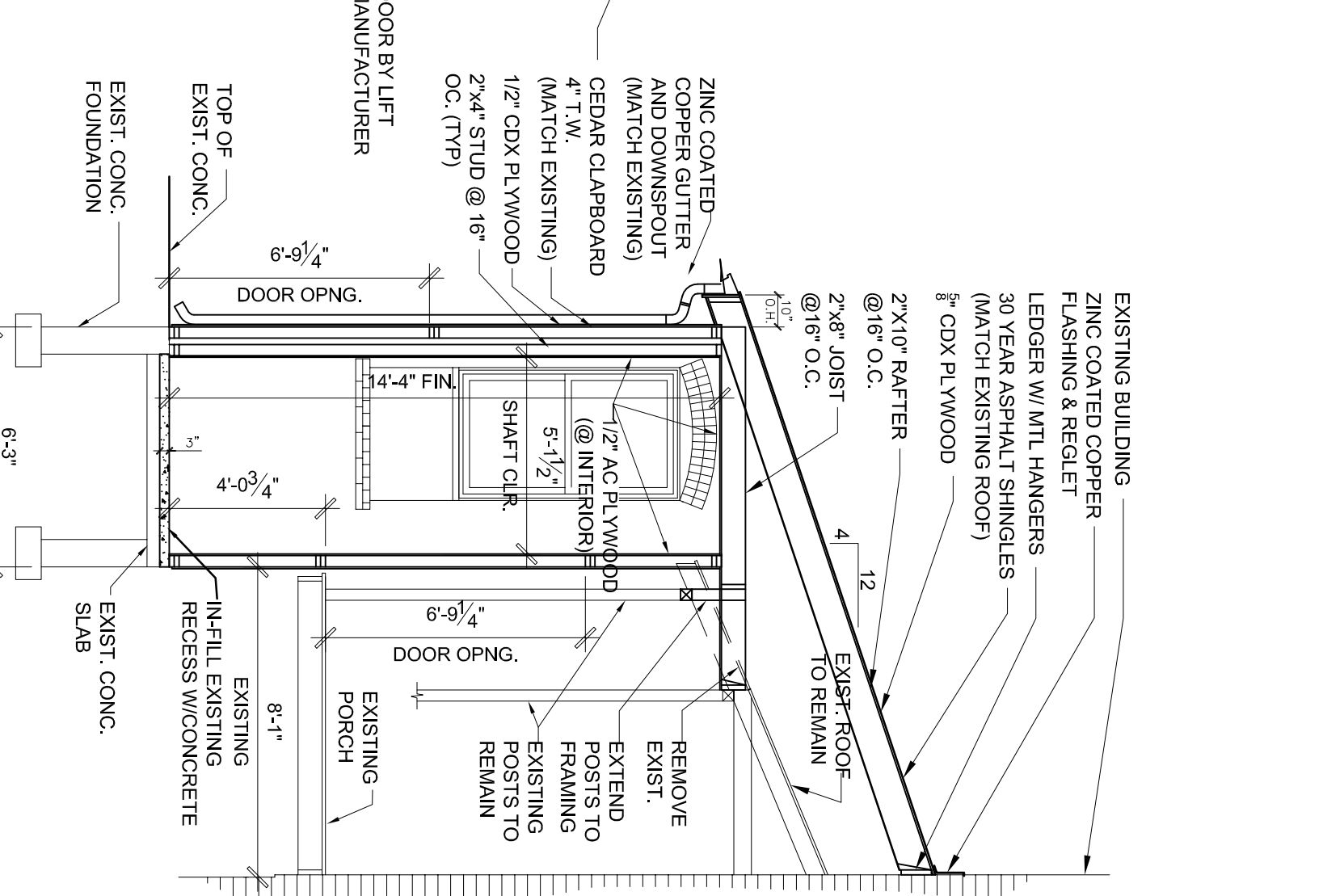
5 Elevation
SCALE: 1/4" = 1'-0"



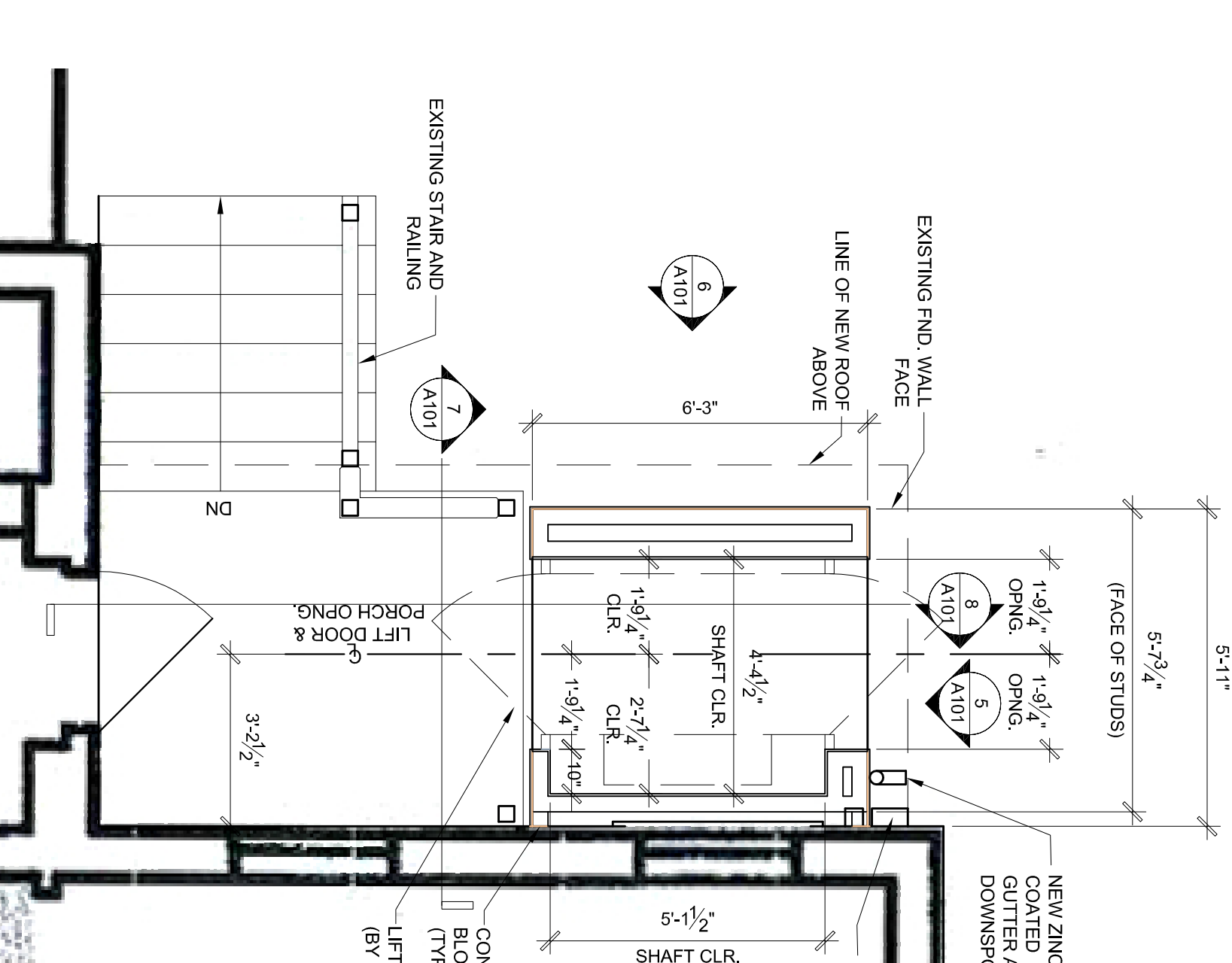
6 Elevation
SCALE: 1/4" = 1'-0"



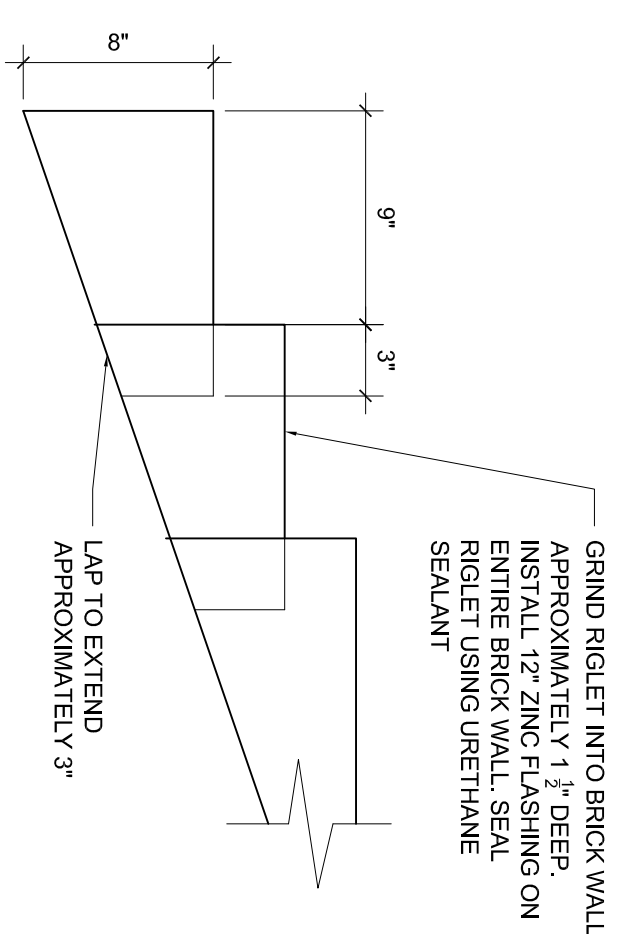
7 Elevation
SCALE: 1/4" = 1'-0"



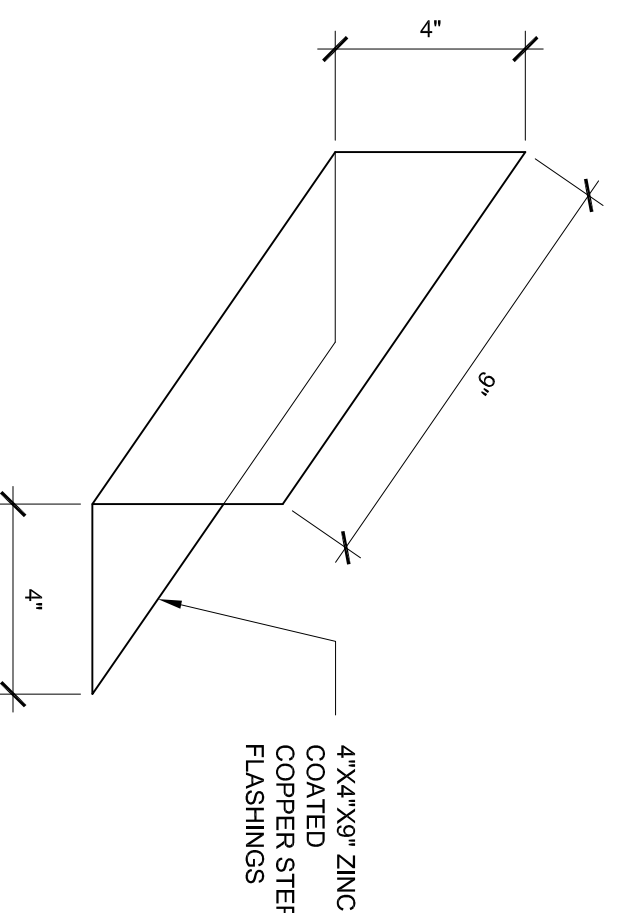
8 Section
SCALE: 1/4" = 1'-0"



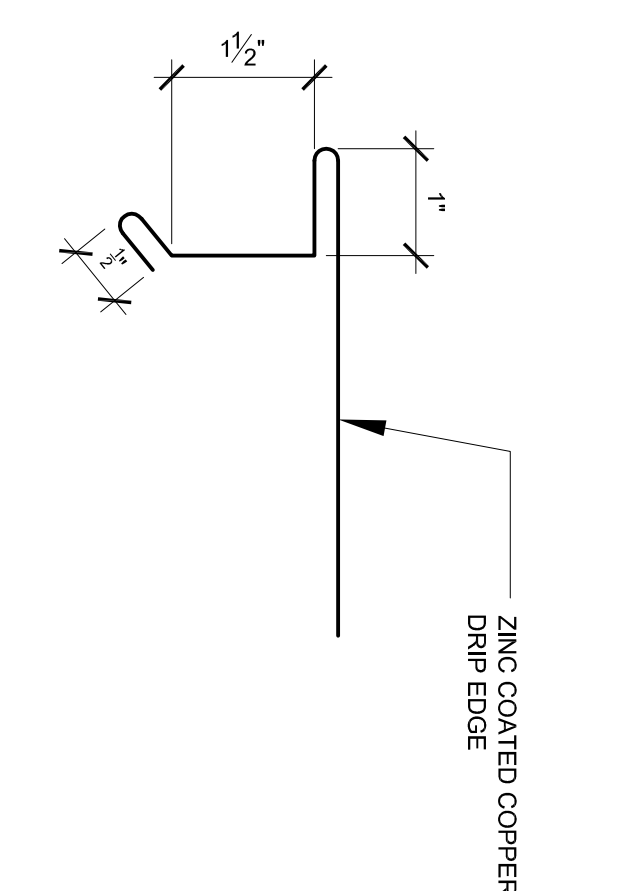
9 Enlarged Lift Plan
SCALE: 3/8" = 1'-0"



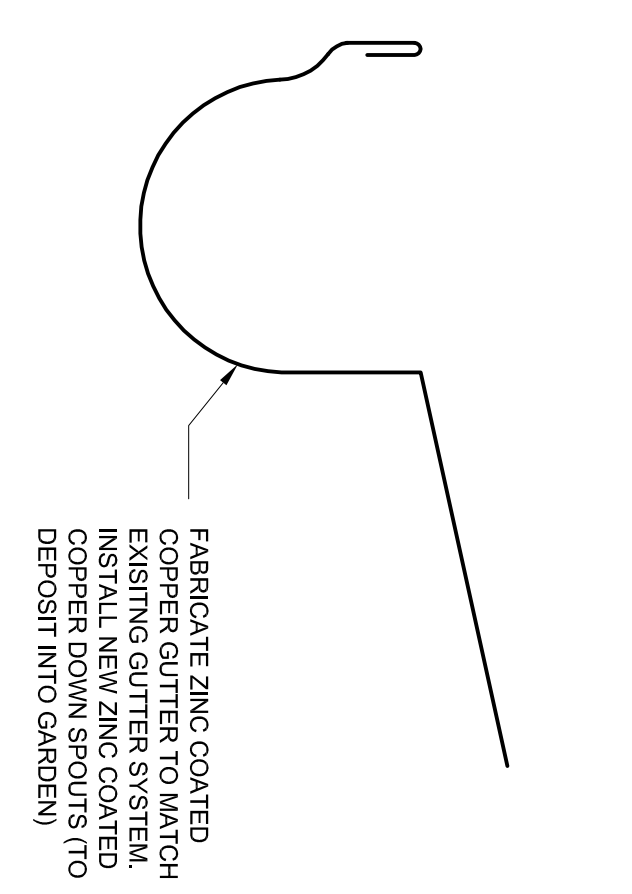
10 Step Flashing Detail
SCALE: 1/2" = 1'-0"



11 Roof Detail
SCALE: 3" = 1'-0"



12 Drip Edge Detail
SCALE: 6" = 1'-0"



13 Gutter Detail
SCALE: 3" = 1'-0"

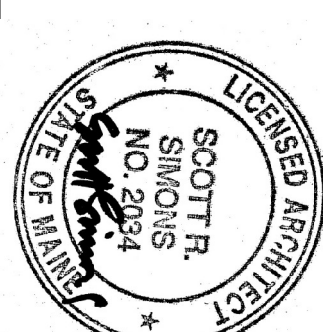
CODE SUMMARY
Waynefleete School, Hurd House, Lift Installation
APPLICABLE CODES

- 2009 International Building Code (IBC)
 - 2009 International Existing Building Code (IEBC)
 - 2011 National Electrical Code (NEC)
- Fire / Life Safety
NFPA Life Safety Code as adopted by the State of Maine
Including but not limited to:
2009 NFPA 101: Life Safety Code
2007 NFPA 13: Installation of Sprinkler Systems (2010 Edition through
Equivalency)

Accessibility
1991 Americans with Disabilities Act / ADAAG 36 CFR
Note: All Codes shall include changes / amendments by the State of Maine
State of Maine, Elevator & Trolley Laws & Rules

- | Building Use | NFPA 2009 | IBC 2009 |
|---|---|--|
| 1. Building Classification by Occupancy | Existing Educational | Education Group E Section 505.1 |
| 2. Construction Type | Existing | Existing Type IV |
| 3. Occupancy Load | Table 7.3.1.2 Educational Use 20 SF net | Table 1004.1.1 Occupancy Load 20 net SF per occupant |

THIS DRAWING IS THE PROPERTY OF SCOTT SIMONS ARCHITECTS (SSA) AND IS NOT TO BE COPIED OR REPRODUCED IN ANY MANNER WITHOUT THE WRITTEN CONSENT OF SCOTT SIMONS ARCHITECTS, LLC.
REVISION:



PROJECT NAME:
WAYNFLETE-HURD LIFT
STORER ST., PORTLAND, MAINE
SEAL:

HURD LIFT

A101