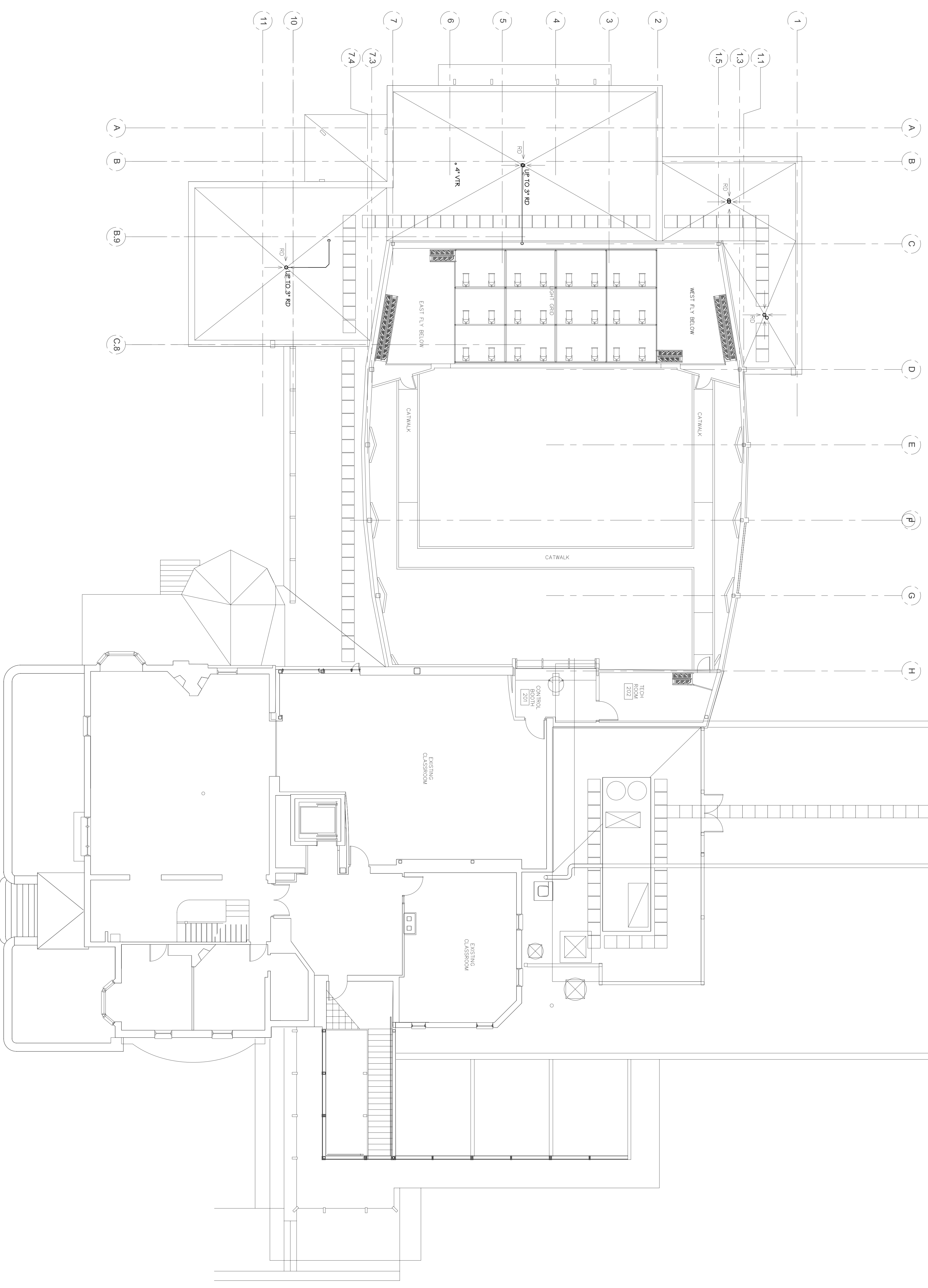


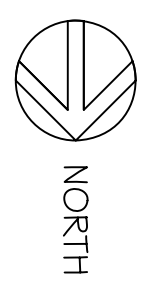
- LEGEND - PLUMBING SYMBOLS**
- WASTE ABOVE FLOOR
 - WASTE BELOW FLOOR
 - VENT ABOVE FLOOR
 - VENT BELOW FLOOR
 - COLD WATER
 - HOT WATER
 - HOT WATER RECIRCULATION
 - TEMPERED HOT WATER
 - TEMPERED HOT WATER RECIRCULATION
 - GAS PIPING
 - AIR PIPING
 - CLEANOUT END OF MAIN
 - FLOOR DRAIN
 - GATE VALVE
 - CHECK VALVE
 - GLOBE VALVE
 - TRIPLE DRY VALVE
 - SHOCK ARRESTOR
 - BALANCE / SHUTOFF VALVE

PLUMBING FIXTURE SCHEDULE

- P-1 WATER CLOSET TOILET, ELONGATED DUAL FLUSH FLOOR MOUNT TOILET, 1.6
2" WASTE, 2" VENT, 1" WATER SUPPLY
 - P-2 LAVATORY, KOHLER K-341, UNDERCOUNTER SINK, KOHLER K-4751, SATIN NICKLE FINISH, FAUCET, ZURN ZB743 GRID DRAIN, ZURN ZB701 1/2" TRAP, ZURN ZB604R-KFC SUPPLIES, ZURN ZB946 1/2" HOT AND COLD WATER, ZURN ZB701 1/2" TRAP, ZURN ZB604R-KFC SUPPLIES, 1/2" WASTE, 1/2" VENT, 1/2" HOT & COLD WATER SUPPLY
 - P-2A LAVATORY, FLOOR MOUNT, WALL HUNG, WHITE, KOZE SATIN NICKLE FAUCET, ZURN ZB743 SUPPLY KIT, ZURN ZB701 1/2" TRAP, ZURN ZB604R-KFC SUPPLIES, ZURN ZB946 1/2" HOT AND COLD WATER SUPPLY, 1/2" WASTE, 1/2" VENT, 1/2" HOT AND COLD WATER SUPPLY
 - P-3 URINAL, ZURN ZB798, DOE COOL, ECONOMIZER URINAL, SYSTEM, WHITE, 1/8" OFF, 2" WASTE, 2" VENT, 3/4" WATER SUPPLY
 - P-4 WORKROOM SINK, ELAY 558248, K 340, CHROME FAUCET, 2" WASTE, 2" VENT, 1/2" HOT & COLD WATER
 - P-5 SERVICE SINK, FAY M58-2424, SIFERKAWA SCS21 1, RCP FAUCET, MAT NG 2437, SINK, FAY M58-2424, SIFERKAWA SCS21 1, RCP FAUCET, MAT NG 2437, 2" WASTE, 2" VENT, 1/2" HOT AND COLD WATER SUPPLY
 - P-6 ELECTRIC WATER COOLER FAUCET, TRUCK FACTORY, COADA, 1/2" WASTE, 1/2" VENT, 1/2" HOT AND COLD WATER SUPPLY
- FLOOR FLOOR HOSE BIBB, ZURN # 31 0
 - FLOOR CLEANOUTS, ZURN #223, 400NH
 - FLOOR DRAINS, FAY ZURN #241 5-4NH
 - ROOF DRAINS, ZURN #2-RO-100
 - REFRIGERATOR ICE MAKER WATER BOX, GIVSKEY #B16975
 - FEE WASH, GUARDIAN G 1805 W/ 35000 MINING VALVE
 - SHOCK ARRESTOR, WILKINS MODEL 1250A
 - BACKFLOW PREVENTER, ZURN #975
 - RICKIC, FAYR- FAYO 007B, 3M



SECOND FLOOR PLAN
SCALE 1/8"=1'-0"



<p>SHEET # M-8 OF 8</p>	<p>PROJECT: WAYNFLETE ART CENTER PORTLAND, ME.</p>	<p>DRAWN: MPJ CHECKED: MPJ SCALE: 1/8"=1'-0" DATE: 08-03-07 PROJECT#: 07144</p>	<p>DRAWINGS THIS SHEET SECOND FLOOR PLUMBING PLANS & DETAILS</p>	<p>REVISIONS: ISSUED FOR BIDDING 09-07-2007</p>	<p>JOHNSON & JORDAN MECHANICAL CONTRACTORS 18 MUSSEY ROAD SCARBOROUGH, MAINE 04074 TEL (207) 883-8345 • FAX (207) 883-8619</p>	
--	---	---	---	--	---	--