

UNIT HEATER SCHEDULE											
SYMBOL	LOCATION	NO.	MFG.	MOD. NO.	BLUH CAP.	ARRANGE- MENT	CFM	S.P.	HP/W	ELC.	REMARKS
GH-1	STAIR	THROBOLA	19.2		4.8		6.9	730	1/8"	120V	100 BMT 557 EXT

UNITS BASED ON TRAPEZ. VERTICAL RECESSED UNIT

HOT WATER HEATING COILS										
SYMBOL	CFM	COL. SIZE	ROOM	MBH	CFM	H2O	EMT	EAT	AIR	REMARKS
HC-1	480	1.0x1.2'	4	30.0	7.0	2.5	1.00	25	0.17"	SERVING RX-1
HC-2	580	2.4x1.2'	4	36.0	6.0	4.1	1.05	25	0.17"	SERVING RX-2
HC-3	1470	2.4x1.2'	1	93.0	4.5	3.5	1.00	25	0.21"	SERVING RX-3

COILS BASED ON TRAPEZ. H2O-WATER

FAN SCHEDULE									
SYMBOL	MFG.	MOD. NO.	CFM	S.P.	HP/W	RPM	ELC.	REMARKS	
FC-1	ROOF	DV-38	300	0.25"	16	1350	4000	DEMO. EXISTING FAN. RECOVERED BY GC.	

① THERMOSTAT CONTROLLED ② MOTORISED DAMPER ③ SPEED CONTROL ④ FACTORY MOUNTED DISCONNECT SWITCH  
 ⑤ 120V-1 PHASE 60 HZ ⑥ 208V-3 PHASE 60 HZ

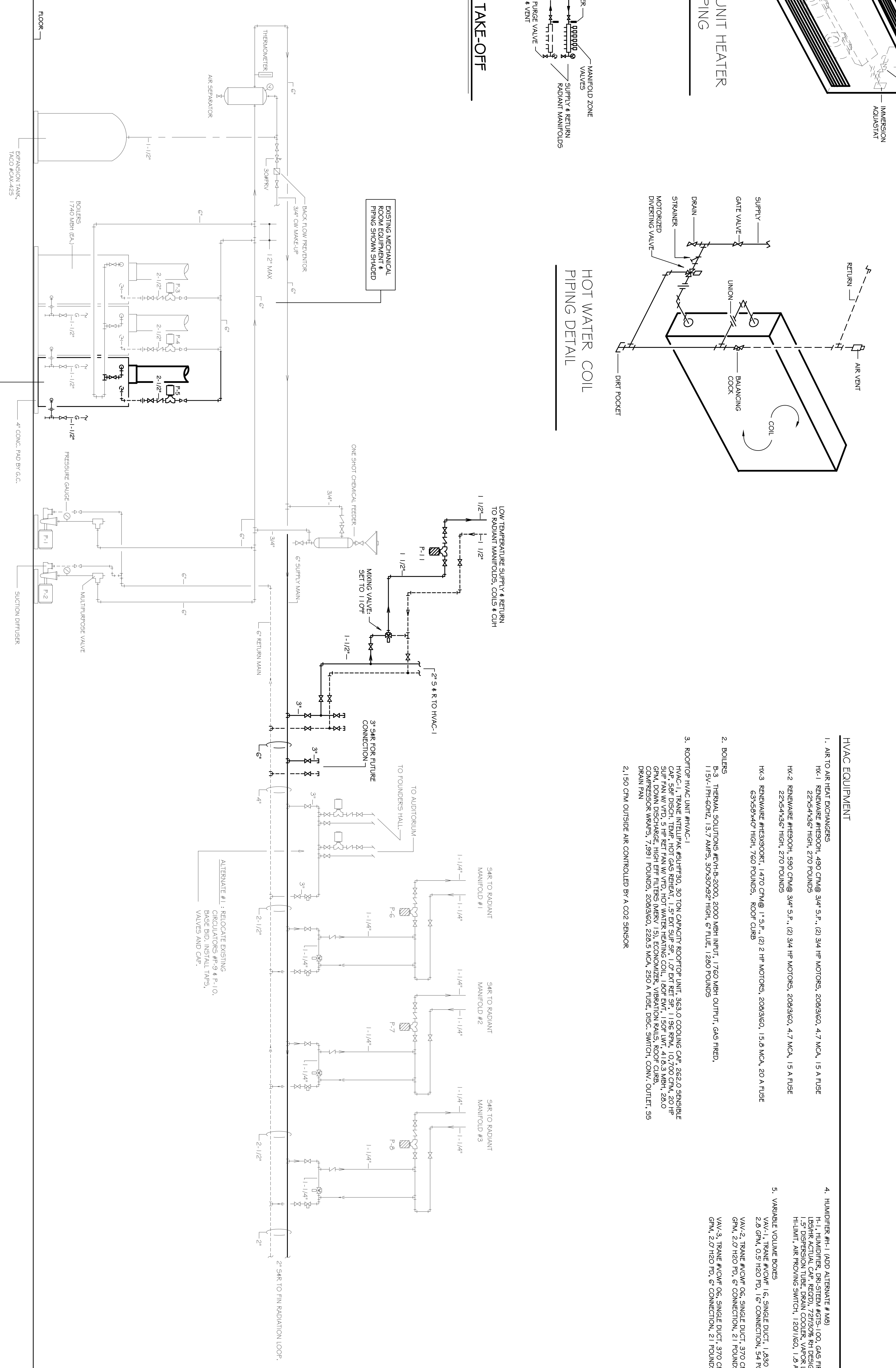
DIFFUSERS-GILLES-REGISTERS									
SYMBOL	MFG. & MODEL#	SIZE	CFM	NC	FD	THROW	CONN.	REMARKS	
A	ANIMOSTAT 481	6" DIA.	0.100	<20	0.03	2.6	6" DIA.	ED GRD	
B	ANIMOSTAT 481	6" DIA.	1.01-200	<20	0.01	3.4	6" DIA.	ED GRD	
C	ANIMOSTAT 481	12" DIA.	4.01-660	<20	0.03	7.1	12" DIA.	ED GRD	
D	ANIMOSTAT 481	12" DIA.	4.01-660	<20	0.03	7.1	12" DIA.	ED GRD	
E	ANIMOSTAT 481	12" DIA.	4.01-660	<20	0.03	7.1	12" DIA.	ED GRD	
F	ANIMOSTAT 481	12" DIA.	4.01-660	<20	0.03	7.1	12" DIA.	ED GRD	
G	ANIMOSTAT 481	12" DIA.	4.01-660	<20	0.03	7.1	12" DIA.	ED GRD	
H	ANIMOSTAT 481	12" DIA.	4.01-660	<20	0.03	7.1	12" DIA.	ED GRD	
I	ANIMOSTAT 481	12" DIA.	4.01-660	<20	0.03	7.1	12" DIA.	ED GRD	
J	ANIMOSTAT 481	12" DIA.	4.01-660	<20	0.03	7.1	12" DIA.	ED GRD	
K	ANIMOSTAT 481	12" DIA.	4.01-660	<20	0.03	7.1	12" DIA.	ED GRD	
L	ANIMOSTAT 481	12" DIA.	4.01-660	<20	0.03	7.1	12" DIA.	ED GRD	
M	ANIMOSTAT 481	12" DIA.	4.01-660	<20	0.03	7.1	12" DIA.	ED GRD	
N	ANIMOSTAT 481	12" DIA.	4.01-660	<20	0.03	7.1	12" DIA.	ED GRD	
O	ANIMOSTAT 481	12" DIA.	4.01-660	<20	0.03	7.1	12" DIA.	ED GRD	
P	ANIMOSTAT 481	12" DIA.	4.01-660	<20	0.03	7.1	12" DIA.	ED GRD	
Q	ANIMOSTAT 481	12" DIA.	4.01-660	<20	0.03	7.1	12" DIA.	ED GRD	
R	ANIMOSTAT 481	12" DIA.	4.01-660	<20	0.03	7.1	12" DIA.	ED GRD	
S	ANIMOSTAT 481	12" DIA.	4.01-660	<20	0.03	7.1	12" DIA.	ED GRD	
T	ANIMOSTAT 481	12" DIA.	4.01-660	<20	0.03	7.1	12" DIA.	ED GRD	

PUMP & CIRCULATOR SCHEDULE									
SYMBOL	MFG. NOS.	CFM	FT. HEAD	H.P.	RPM	POWER	REMARKS		
P-1 & 2	CE 3007	450	35	7.1/2	1750	200/3			
P-3 & 4	1435	30	15	3/4	1750	200/3			
P-5	1435	30	15	3/4	1750	200/3	LOW TEMPERATURE LOOP		

PUMPS BASED ON TACO

**HVAC EQUIPMENT**

- AIR TO AIR HEAT EXCHANGERS: 1. AIR TO AIR HEAT EXCHANGERS, 2000 MBH UNIT, 1760 MBH OUTPUT, GAS FUEL.
- BOILERS: 1. TRANE INTELLI-LINK 2000, 2000 MBH UNIT, 1760 MBH OUTPUT, GAS FUEL.
- ROOFTOP HVAC UNIT HVAC-1: 1. TRANE INTELLI-LINK 2000, 2000 MBH UNIT, 1760 MBH OUTPUT, GAS FUEL.
- HUMIDIFIER #1 (ADD ALTERNATE #1): 1. HUMIDIFIER #1, (ADD ALTERNATE #1)



**HOT WATER HEATING & DOMESTIC WATER PIPING IN MECHANICAL ROOM**

VENT CONTROL SENSOR WALL LOCATIONS

EXISTING MECHANICAL ROOM EQUIPMENT & PIPING SHOWN SHADDED

ONE SHOT CHEMICAL FEEDER

LOW TEMPERATURE SUPPLY & RETURN TO RADIANT MAINFOLDS, COILS & CUH

MIXING VALVE SUCT TO 100"

3" SINK FOR TUBS CONNECTION

TO TUBS/SHOWER

TO AUTOSTEAM

TO FLOOR/CEILING

TO RADIANT MAINFOLD #1

TO RADIANT MAINFOLD #2

TO RADIANT MAINFOLD #3

TO RADIANT MAINFOLD #4

TO RADIANT MAINFOLD #5

TO RADIANT MAINFOLD #6

TO RADIANT MAINFOLD #7

TO RADIANT MAINFOLD #8

TO RADIANT MAINFOLD #9

TO RADIANT MAINFOLD #10

TO RADIANT MAINFOLD #11

TO RADIANT MAINFOLD #12

TO RADIANT MAINFOLD #13

TO RADIANT MAINFOLD #14

TO RADIANT MAINFOLD #15

TO RADIANT MAINFOLD #16

TO RADIANT MAINFOLD #17

TO RADIANT MAINFOLD #18

TO RADIANT MAINFOLD #19

TO RADIANT MAINFOLD #20

TO RADIANT MAINFOLD #21

TO RADIANT MAINFOLD #22

TO RADIANT MAINFOLD #23

TO RADIANT MAINFOLD #24

TO RADIANT MAINFOLD #25

TO RADIANT MAINFOLD #26

TO RADIANT MAINFOLD #27

TO RADIANT MAINFOLD #28

TO RADIANT MAINFOLD #29

TO RADIANT MAINFOLD #30

TO RADIANT MAINFOLD #31

TO RADIANT MAINFOLD #32

TO RADIANT MAINFOLD #33

TO RADIANT MAINFOLD #34

TO RADIANT MAINFOLD #35

TO RADIANT MAINFOLD #36

TO RADIANT MAINFOLD #37

TO RADIANT MAINFOLD #38

TO RADIANT MAINFOLD #39

TO RADIANT MAINFOLD #40

TO RADIANT MAINFOLD #41

TO RADIANT MAINFOLD #42

TO RADIANT MAINFOLD #43

TO RADIANT MAINFOLD #44

TO RADIANT MAINFOLD #45

TO RADIANT MAINFOLD #46

TO RADIANT MAINFOLD #47

TO RADIANT MAINFOLD #48

TO RADIANT MAINFOLD #49

TO RADIANT MAINFOLD #50

TO RADIANT MAINFOLD #51

TO RADIANT MAINFOLD #52

TO RADIANT MAINFOLD #53

TO RADIANT MAINFOLD #54

TO RADIANT MAINFOLD #55

TO RADIANT MAINFOLD #56

TO RADIANT MAINFOLD #57

TO RADIANT MAINFOLD #58

TO RADIANT MAINFOLD #59

TO RADIANT MAINFOLD #60

TO RADIANT MAINFOLD #61

TO RADIANT MAINFOLD #62

TO RADIANT MAINFOLD #63

TO RADIANT MAINFOLD #64

TO RADIANT MAINFOLD #65

TO RADIANT MAINFOLD #66

TO RADIANT MAINFOLD #67

TO RADIANT MAINFOLD #68

TO RADIANT MAINFOLD #69

TO RADIANT MAINFOLD #70

TO RADIANT MAINFOLD #71

TO RADIANT MAINFOLD #72

TO RADIANT MAINFOLD #73

TO RADIANT MAINFOLD #74

TO RADIANT MAINFOLD #75

TO RADIANT MAINFOLD #76

TO RADIANT MAINFOLD #77

TO RADIANT MAINFOLD #78

TO RADIANT MAINFOLD #79

TO RADIANT MAINFOLD #80

TO RADIANT MAINFOLD #81

TO RADIANT MAINFOLD #82

TO RADIANT MAINFOLD #83

TO RADIANT MAINFOLD #84

TO RADIANT MAINFOLD #85

TO RADIANT MAINFOLD #86

TO RADIANT MAINFOLD #87

TO RADIANT MAINFOLD #88

TO RADIANT MAINFOLD #89

TO RADIANT MAINFOLD #90

TO RADIANT MAINFOLD #91

TO RADIANT MAINFOLD #92

TO RADIANT MAINFOLD #93

TO RADIANT MAINFOLD #94

TO RADIANT MAINFOLD #95

TO RADIANT MAINFOLD #96

TO RADIANT MAINFOLD #97

TO RADIANT MAINFOLD #98

TO RADIANT MAINFOLD #99

TO RADIANT MAINFOLD #100