

ALTERNATE #M4  
(2) VAVS OFF HVAC-1  
FOR OFF TIME GYM HVAC

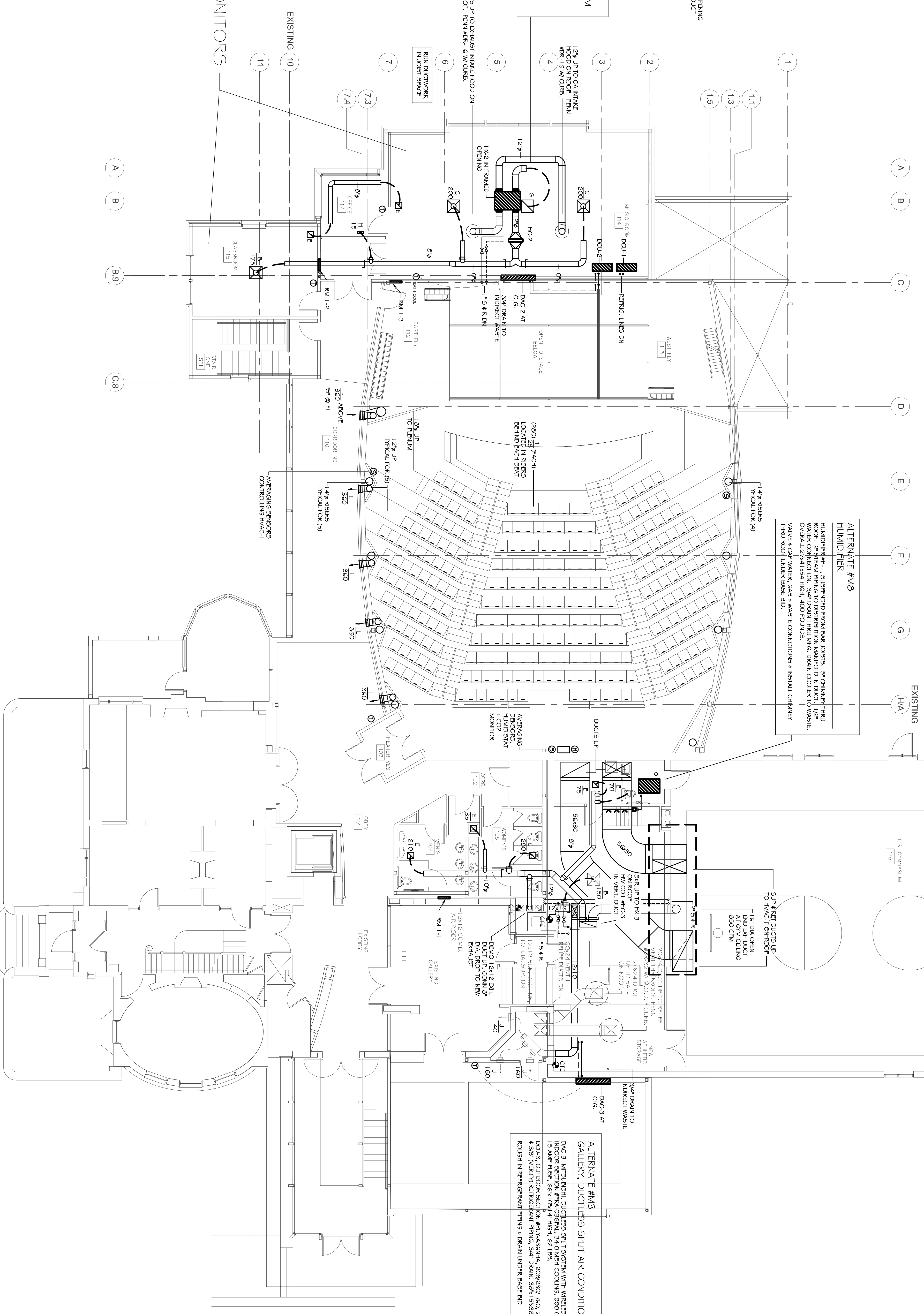
**ALTERNATE #M5**  
**HUMIDIFIER**  
HUMIDIFIER, SUPPLIED FROM GAS LOSS, 5" CHARGE THERM. WATER CONNECTION, SHUT DOWN THROUGH MFG. DRAIN COOLER TO WASTE VALVE. COLD WATER GAS & WASTE CONNECTIONS & INSTAL. CRANK. THRU ROOF UNDER BASE BID.

**ALTERNATE #M2**  
**MUSIC RM #114, DUCTLESS SPLIT AIR CONDITIONING SYSTEM**  
D/C-2, MITSUBISHI, DUCTLESS SPLIT SYSTEM WITH WIRELESS REMOTE CONTROL. 15 AMP FUSE, 65X110X14 HIGH, 62 LBS. D/C-2, OUTDOOR SECTION #PVC-ASBHN, 200X230 (EQ. 25 MCA, 40 AMP FUSE, 50P KNOCK IN REFRIGERANT PIPING & DRAIN UNDER BASE BID.

**ALTERNATE #M3**  
**GALLERY, DUCTLESS SPLIT AIR CONDITIONING SYSTEM**  
D/C-3, MITSUBISHI, DUCTLESS SPLIT SYSTEM WITH WIRELESS REMOTE CONTROL. 15 AMP FUSE, 65X110X14 HIGH, 62 LBS. D/C-3, OUTDOOR SECTION #PVC-ASBHN, 200X230 (EQ. 25 MCA, 40 AMP FUSE, 50P KNOCK IN REFRIGERANT PIPING & DRAIN UNDER BASE BID.

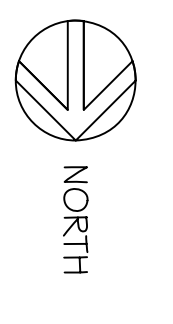
ALT #M5 DELETED  
ALTERNATE #M7 DELETED  
ALTERNATE #M6 DELETED

CO2 MONITORS



FIRST FLOOR PLAN

SCALE 1/8"=1'-0"



<b>SHEET #</b> <b>M-2</b> OF 8	<b>PROJECT:</b> <b>WAYNFLETE ART CENTER</b> PORTLAND, ME.	<b>DRAWN:</b> MPJ	<b>CHECKED:</b> MPJ	<b>DRAWINGS THIS SHEET</b> <b>MECHANICAL</b> <b>PLANS &amp; DETAILS</b>	<b>REVISIONS:</b> ISSUED FOR BIDDING 09-07-2007		
		<b>SCALE:</b> 1/8"=1'-0"	<b>DATE:</b> XX-XX-07				
		<b>PROJECT #</b> 07144					