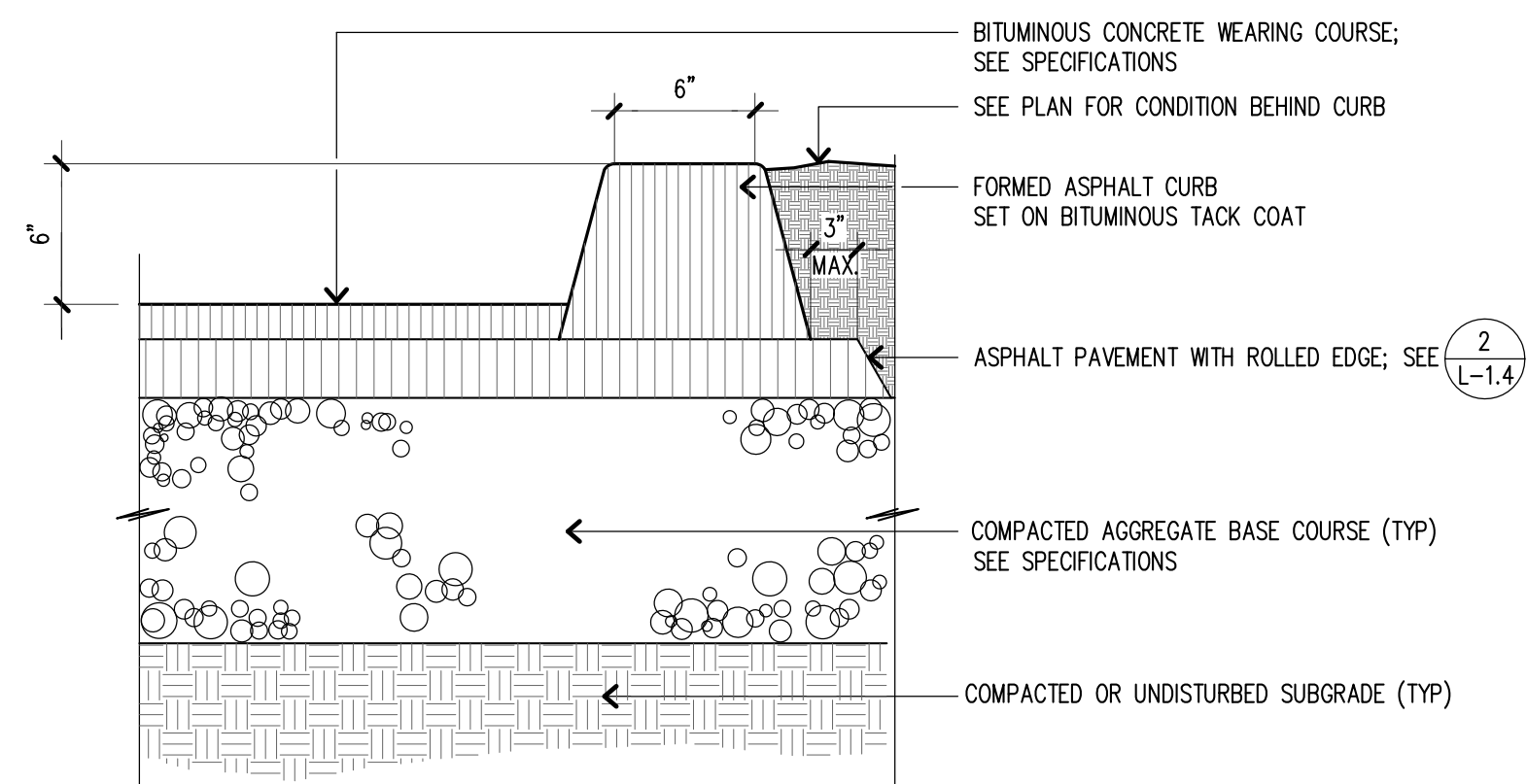
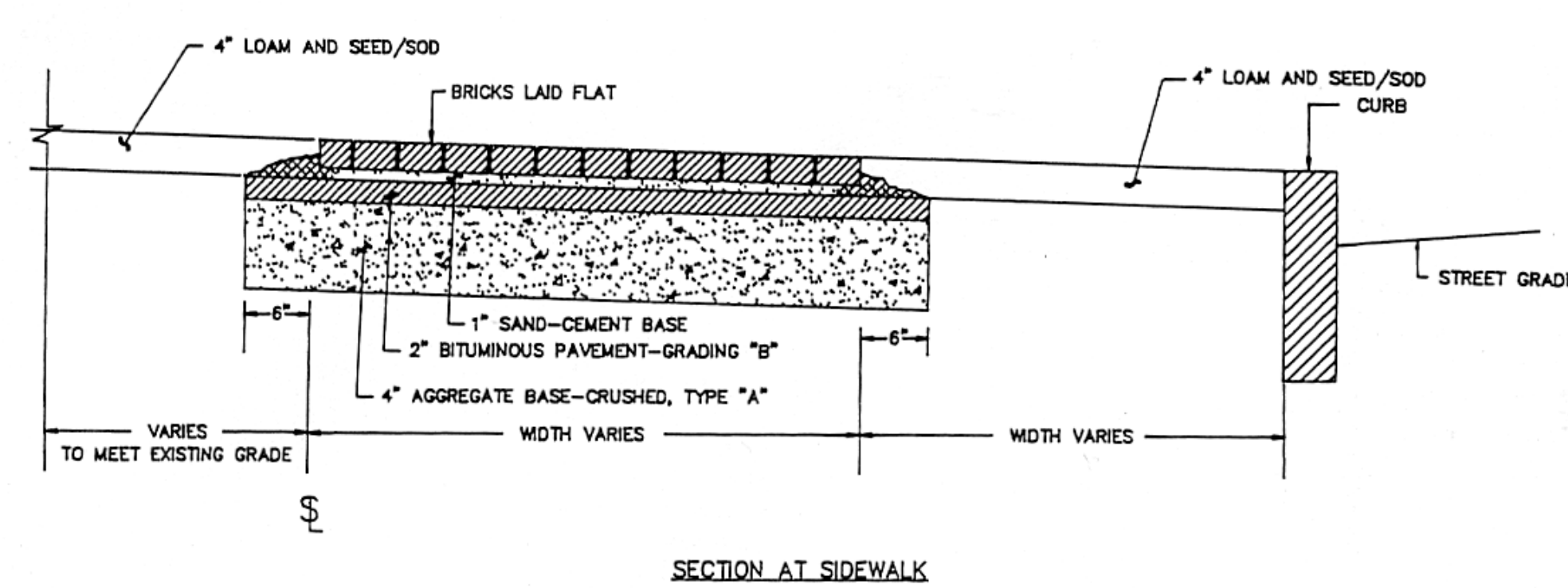


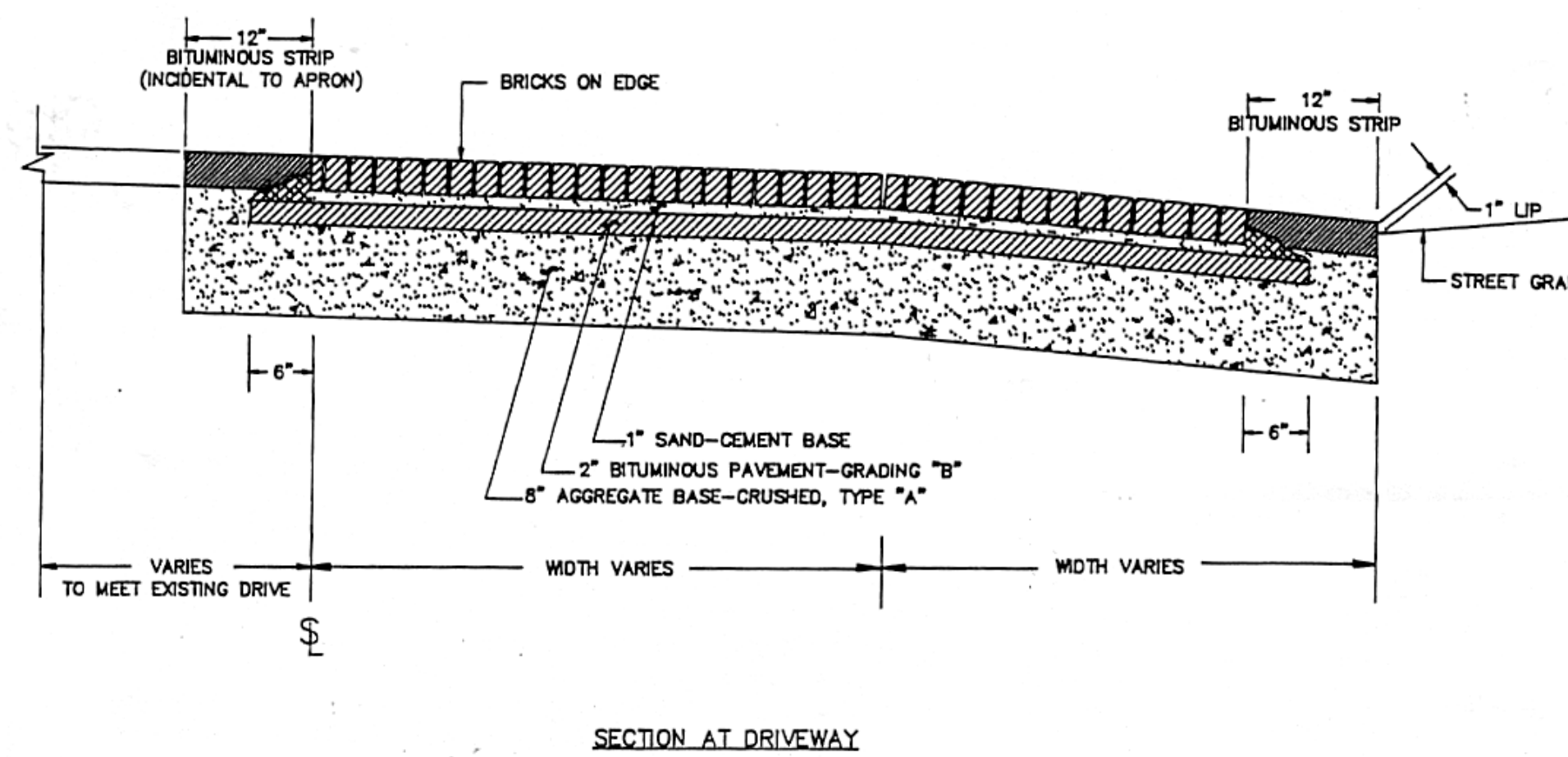
1 CONCRETE PAVEMENT
L-1.4 SCALE: 1 1/2" = 1'-0"



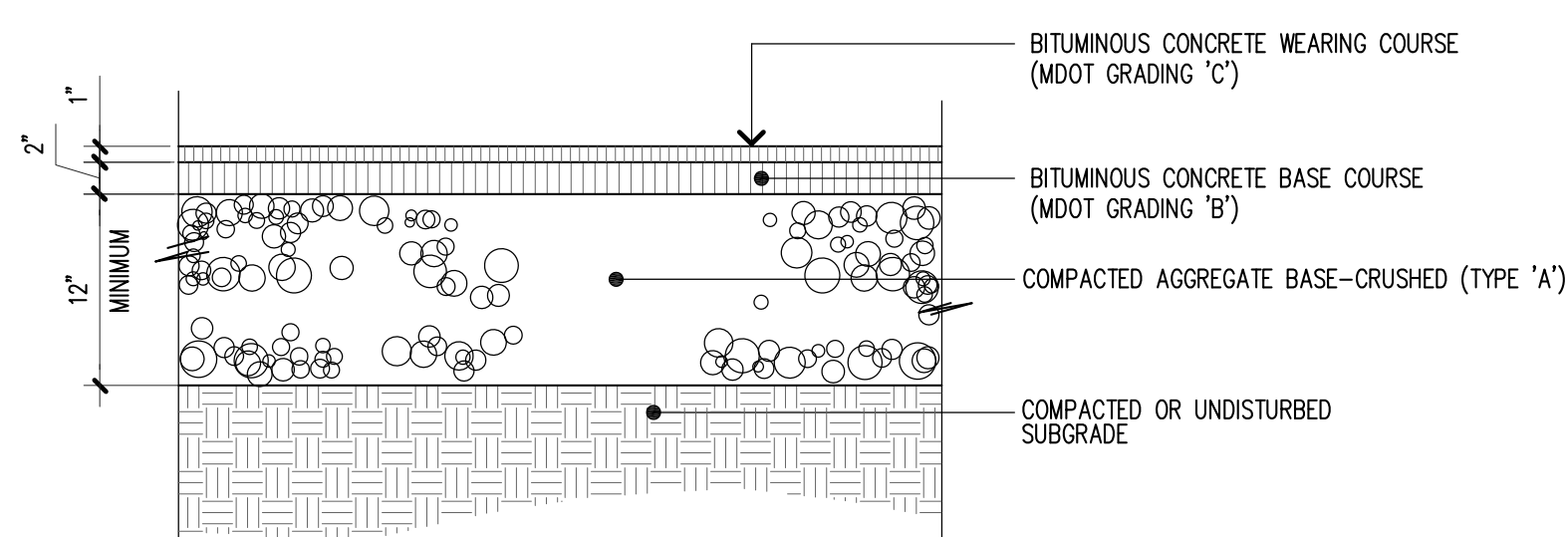
5 BITUMINOUS CURB
L-1.4 SCALE: 1 1/2" = 1'-0"



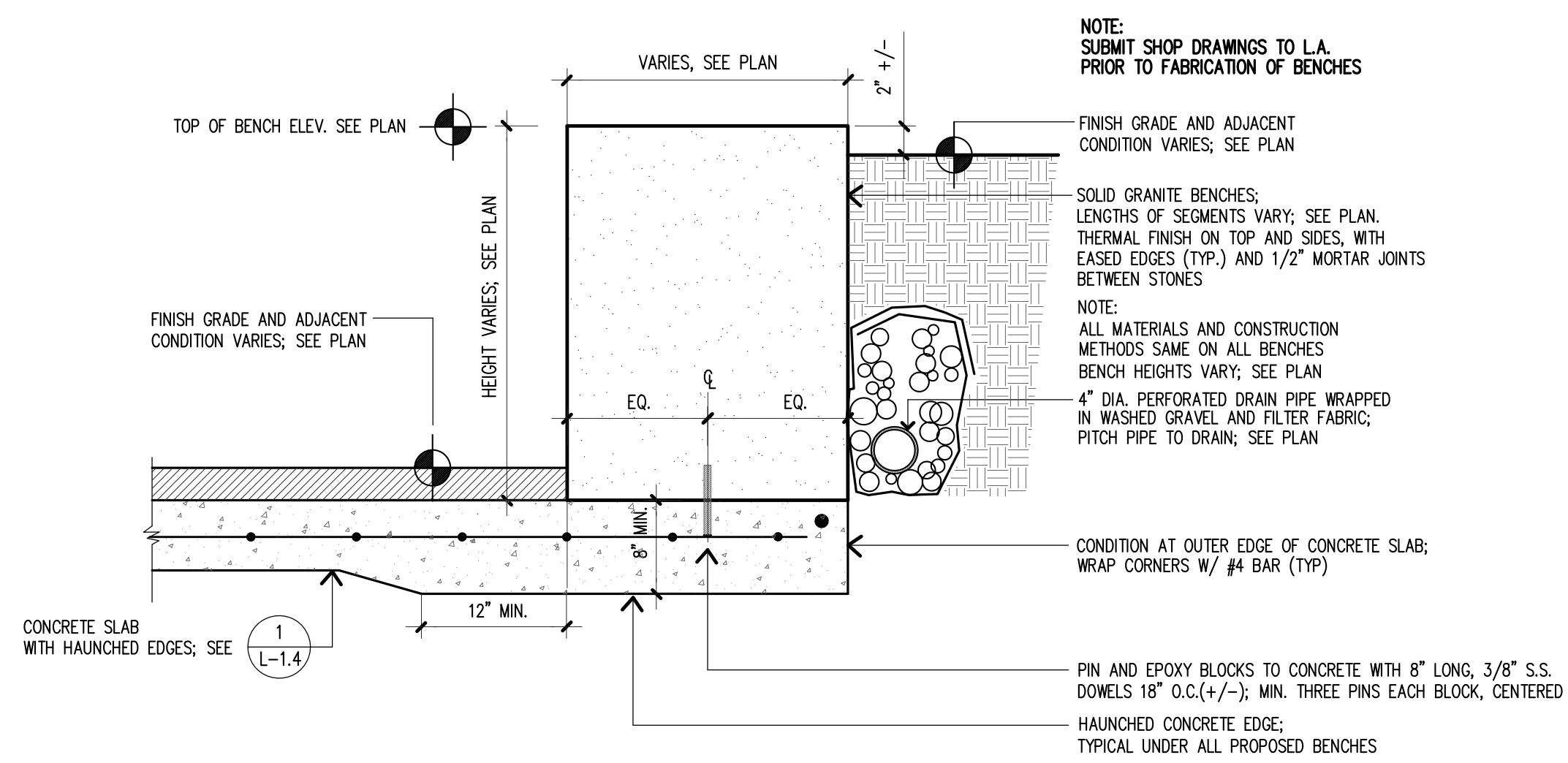
NOTE: BORDER COURSE OF BRICK SHALL BE MORTARED TO CONCRETE BASE.



SECTION AT DRIVEWAY



2 ASPHALT PAVEMENT
L-1.4 SCALE: 1" = 1'-0"

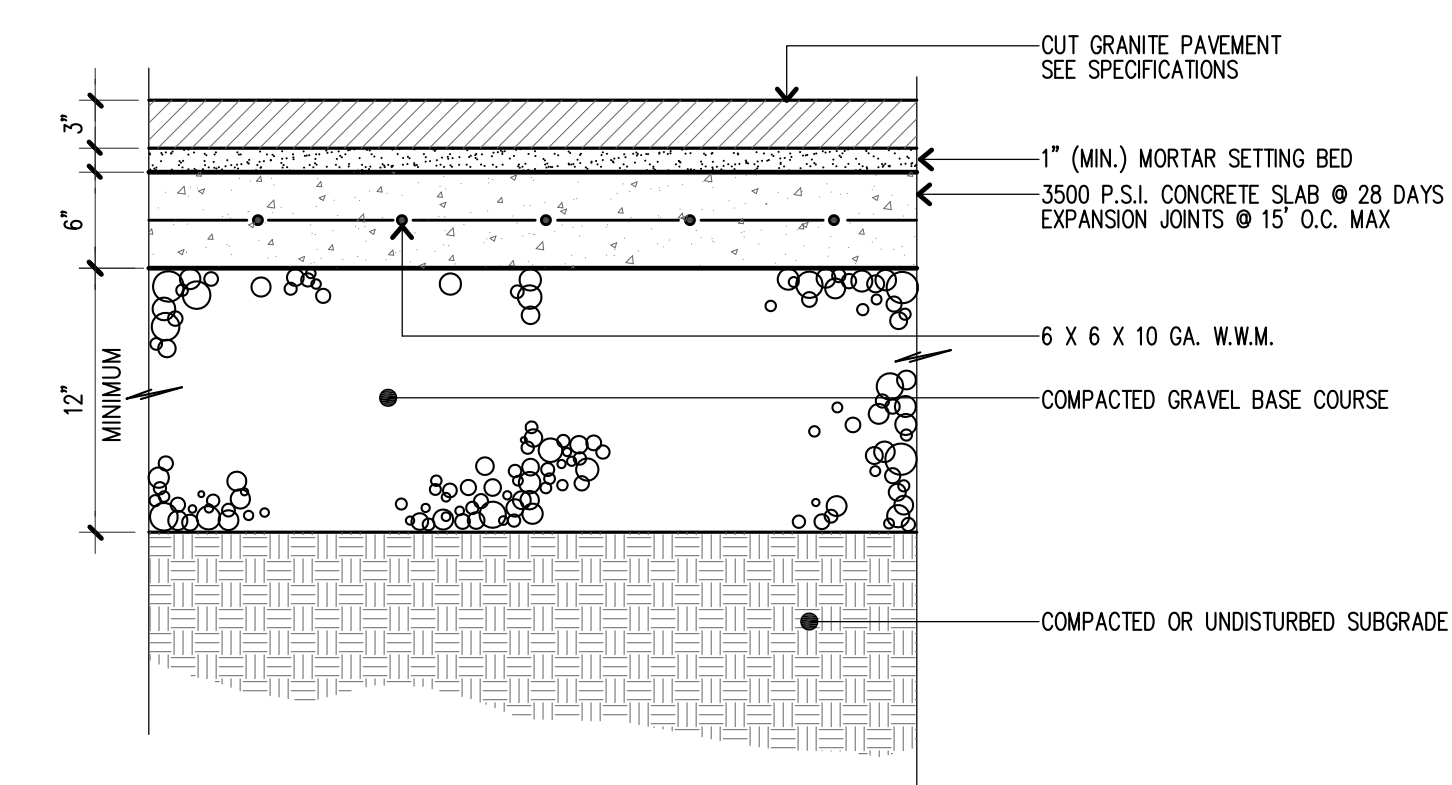


6 GRANITE SEAT WALL
L-1.4 SCALE: 1" = 1'-0"

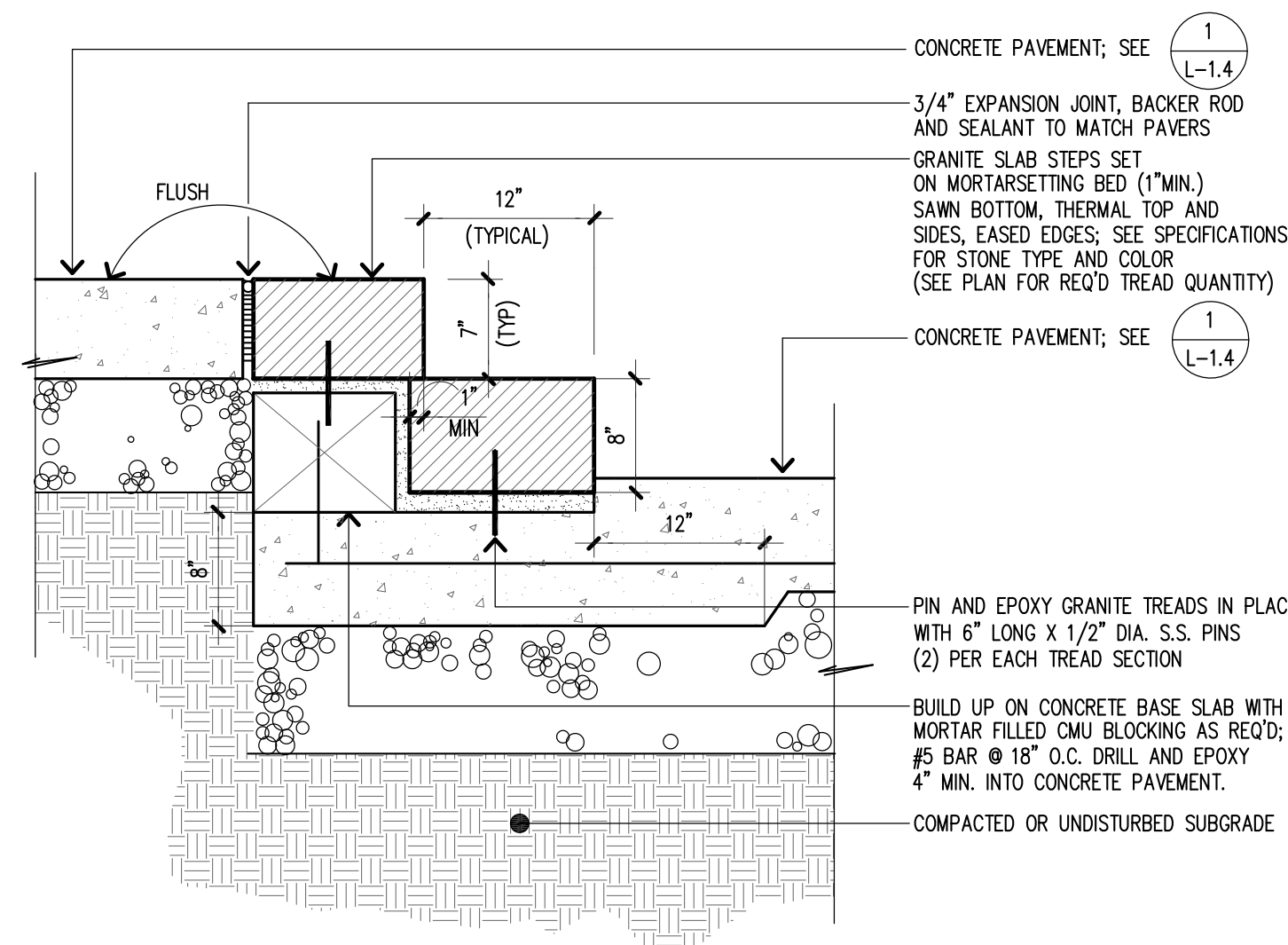
9 CITY OF PORTLAND BRICK SIDEWALK & DRIVEWAY
L-1.4 SCALE: N.T.S.



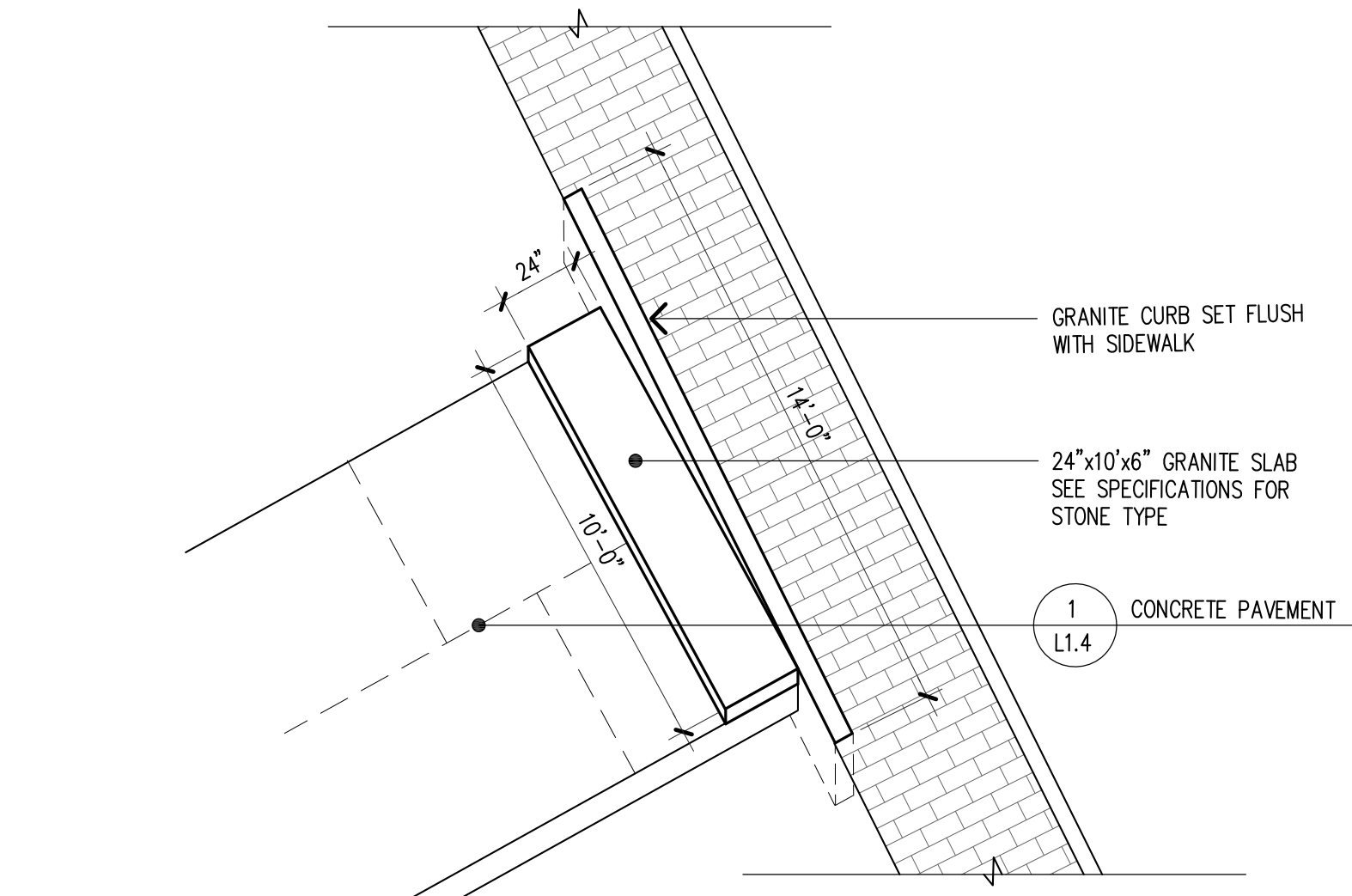
michael boucher landscape architecture
457 US Route 1
Freeport, ME 04032
t 207.865.1080
f 207.865.1455
www.boucherlandscape.com



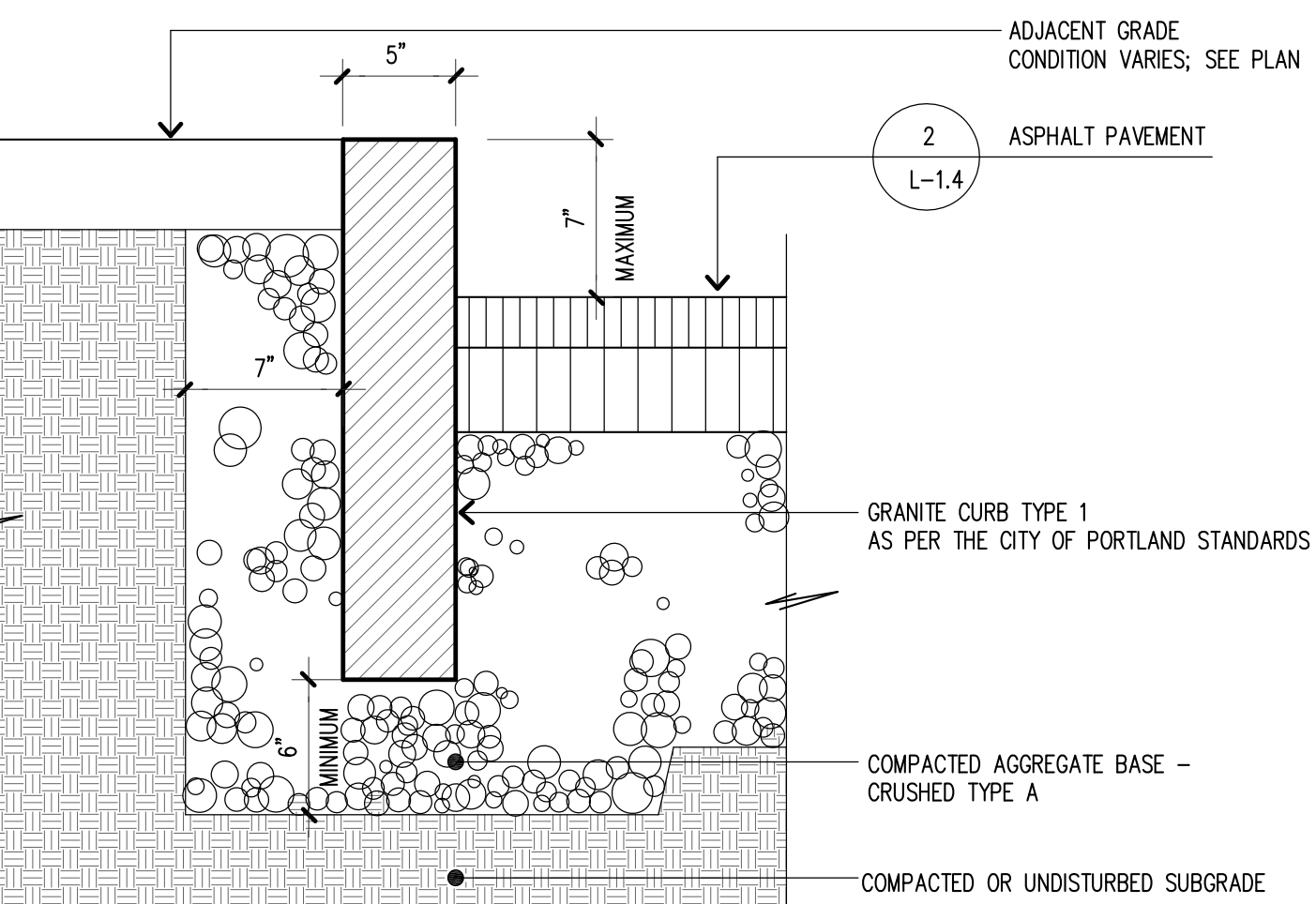
3 GRANITE PAVEMENT
L-1.4 SCALE: 1" = 1'-0"



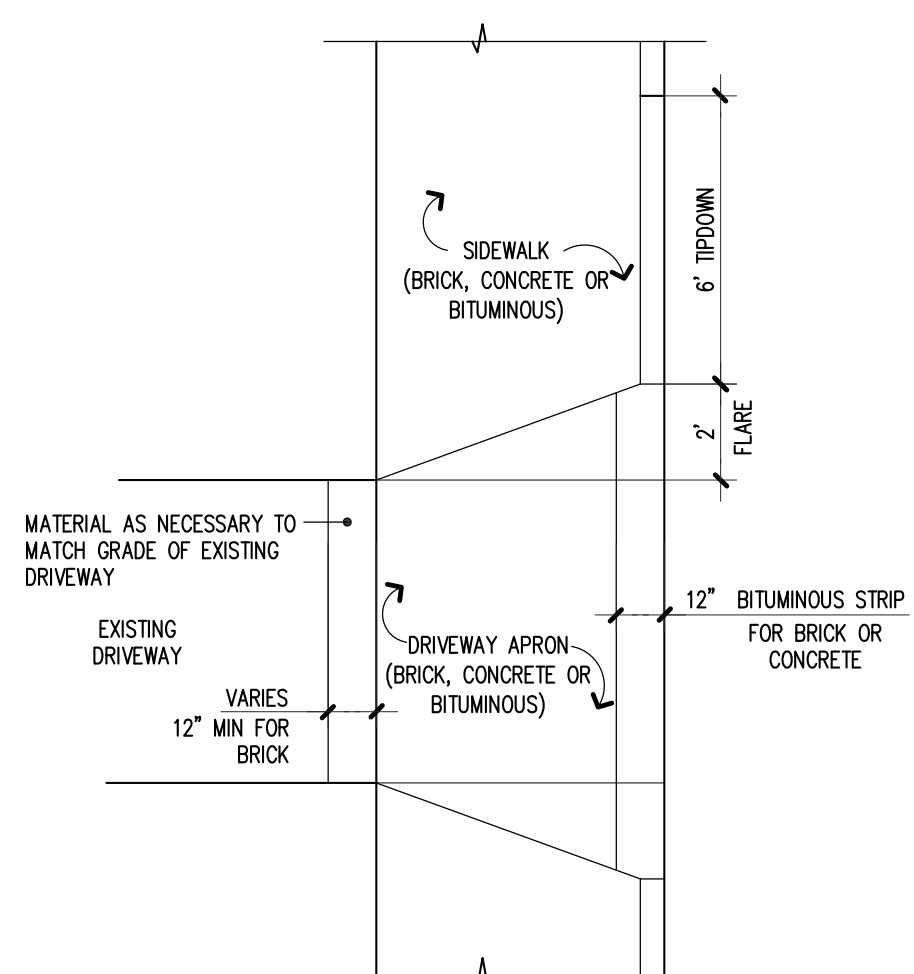
7 GRANITE STEPS ON BASE SLAB
L-1.4 SCALE: 1" = 1'-0"



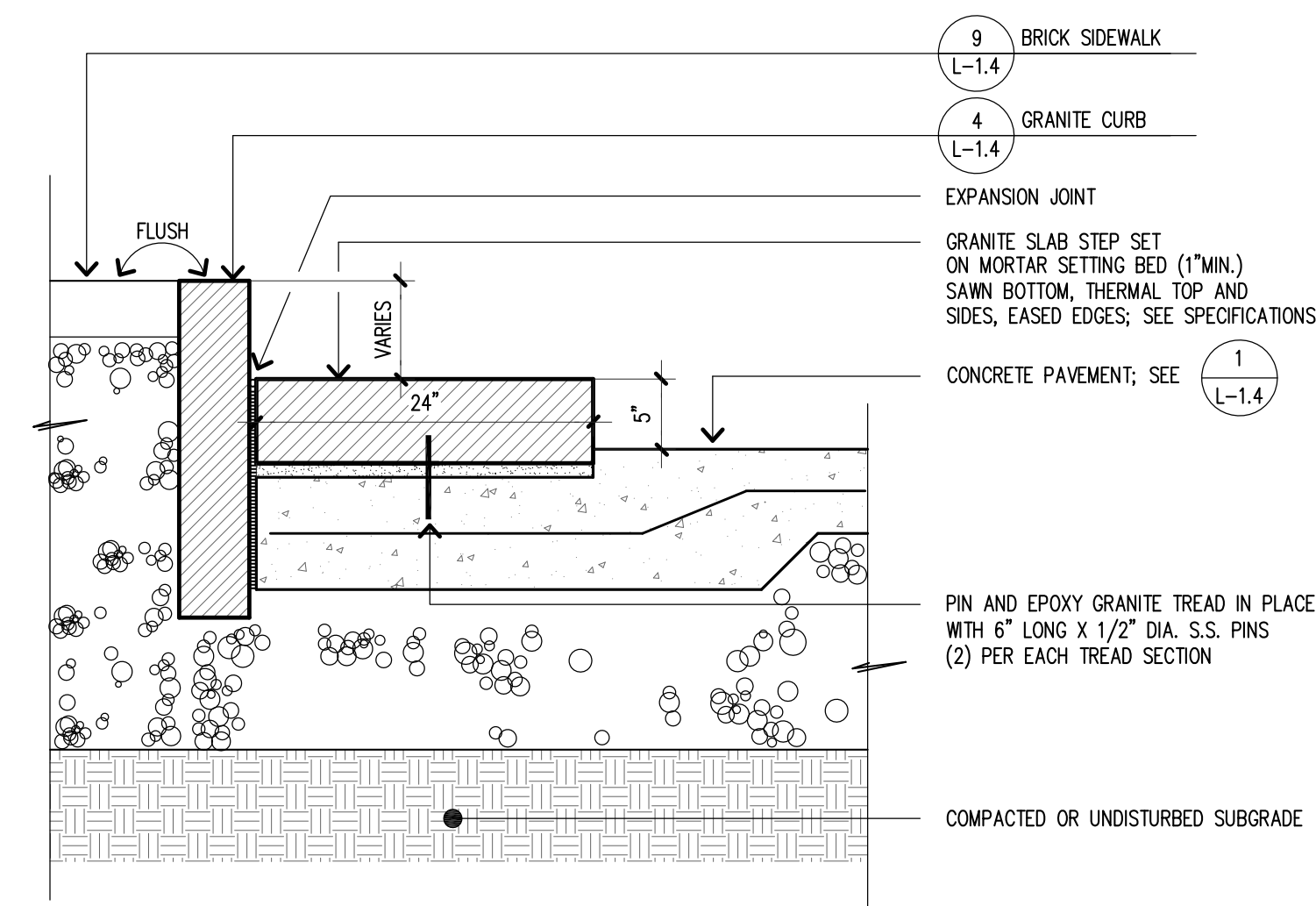
AXONOMETRIC 1/4" = 1'



4 CITY OF PORTLAND GRANITE CURB
L-1.4 SCALE: 1 1/2" = 1'-0"



8 CITY OF PORTLAND SIDEWALK & DRIVEWAY DETAIL
L-1.4 SCALE: 1/4" = 1'-0"



10 GRANITE STEP @ SIDEWALK
L-1.4 SCALE: AS INDICATED

THIS DRAWING IS THE PROPERTY OF SCOTT SIMONS ARCHITECTS AND IS NOT TO BE COPIED OR REPRODUCED IN PART OR WHOLE.

PROJECT
WAYNFLETE ARTS CENTER
PHASE TWO
ADDITION/ RENOVATION
360 SPRING STREET
PORTLAND, ME

TITLE
SITE DETAILS

STATUS: ISSUED FOR BIDDING

DATE: 05.07.2007
SCALE: 1"=10'
PROJECT NO.: 2003-0040.00
DRAWN BY:
REVISION / DATE:
2007© Scott Simons Architects

L-1.4