

Progress Print
January 30, 2001

Waynflete Arts Center

360 Spring Street, Portland, Maine



PROJECT

WAYNFLETE SCHOOL

360 SPRING STREET
 PORTLAND, ME

Progress Print
 January 30, 2001

TITLE

**REVISED CAMPUS
 MASTER PLAN**
 01.10.01

STATUS:

**DESIGN DEVELOPMENT
 NOT FOR CONSTRUCTION**

DATE:

01.30.01

REVISION DATE:

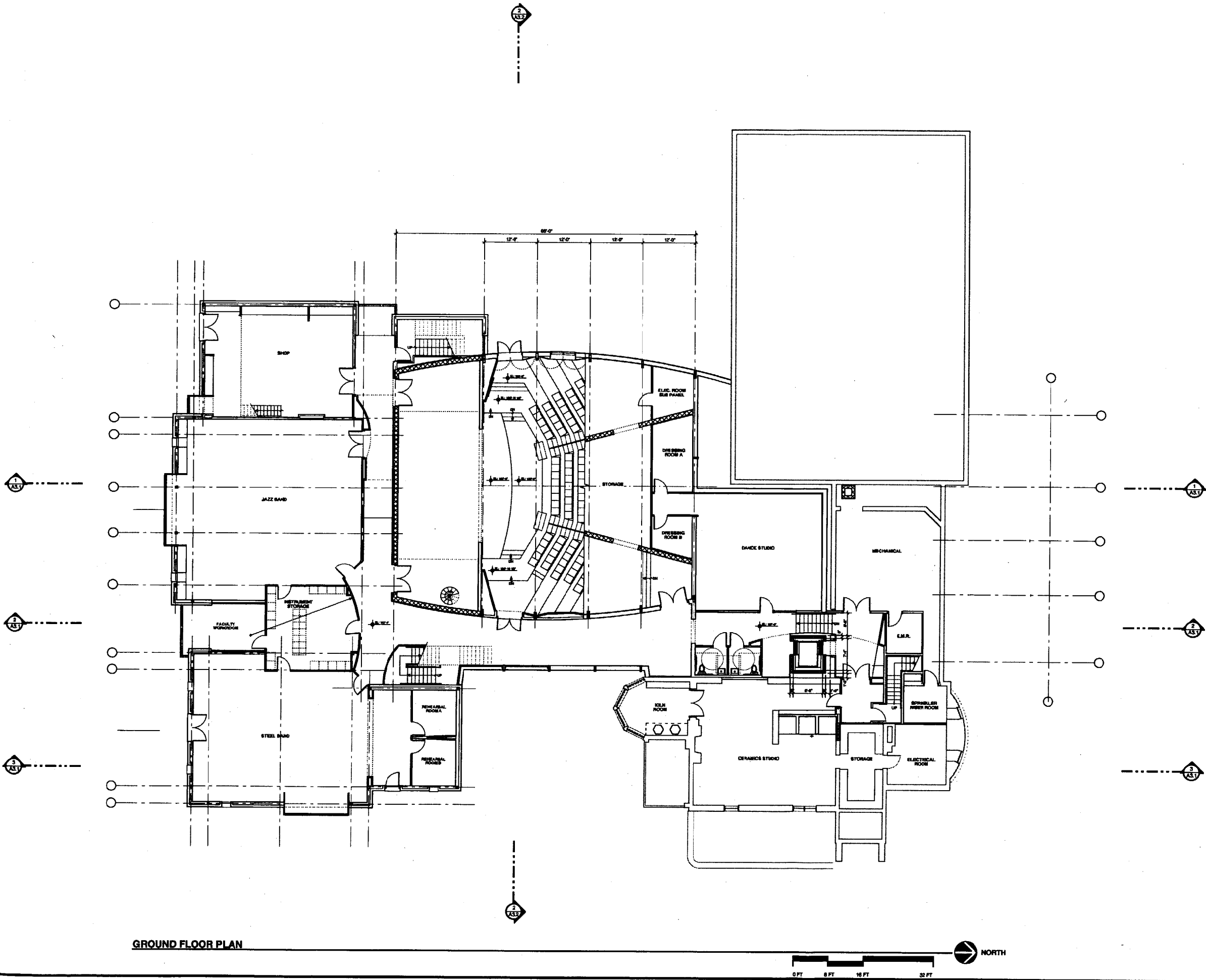
PROJECT NO.

00118.00

DRAWN BY:

SSM © Scott Shuman Architects

DWG NO.



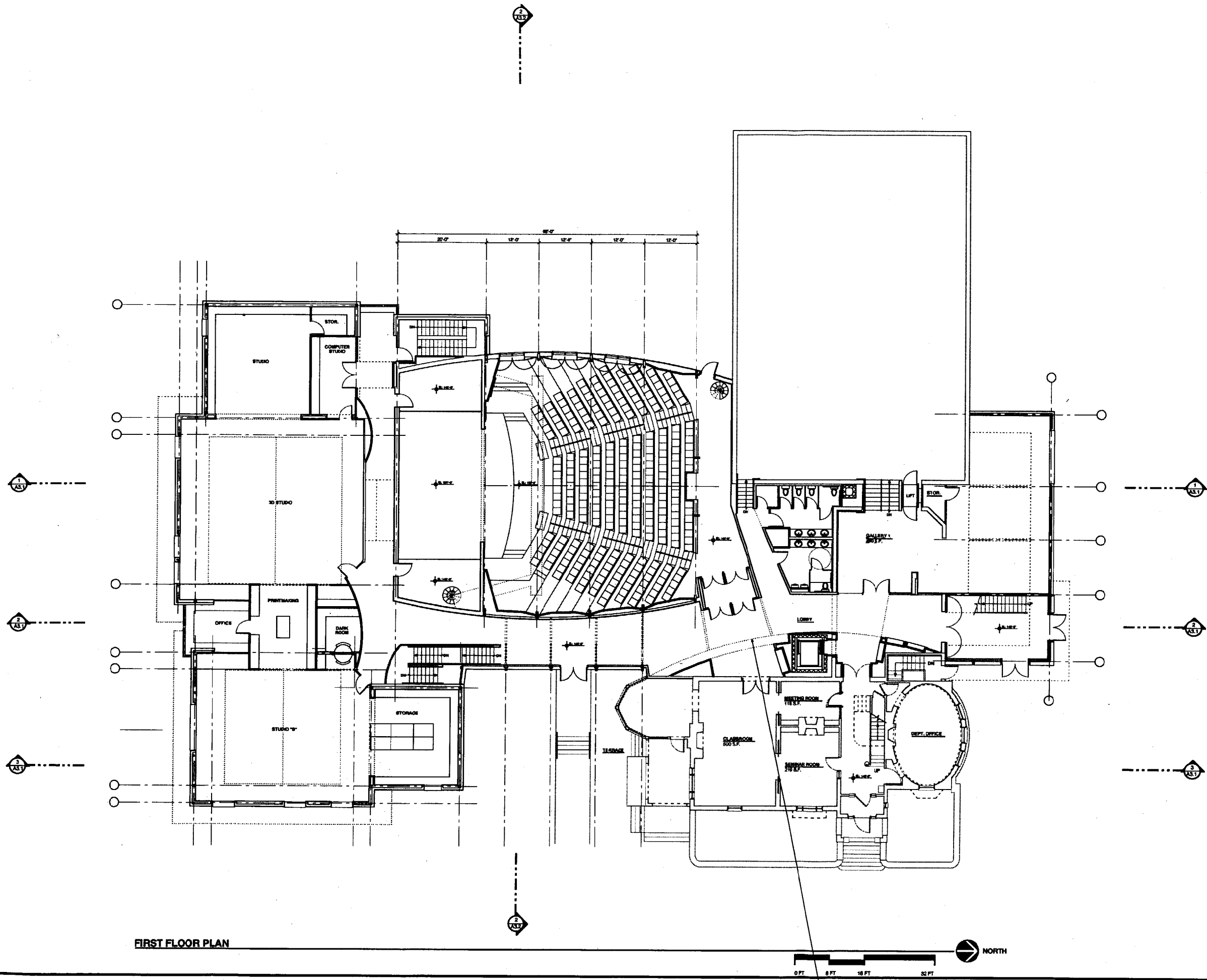
GROUND FLOOR PLAN

SSA
 Scott Shuman Architects
 30 Spring Street
 Portland, ME 04101
 Tel: 603.775.4500
 Fax: 603.775.4501

PROJECT
WAYNFLETE SCHOOL
 300 SPRING STREET
 PORTLAND, ME
 Progress Print
 January 30, 2001

TITLE
GROUND FLOOR PLAN

STATUS: DESIGN DEVELOPMENT NOT FOR CONSTRUCTION	
DATE: 01.30.01	REVISION DATE:
SCALE: 1/8" = 1'-0"	
PROJECT NO: 00118.00	
DRAWN BY: SSA	300@ Scott Shuman Architects
DWG NO.	A-1.1



FIRST FLOOR PLAN

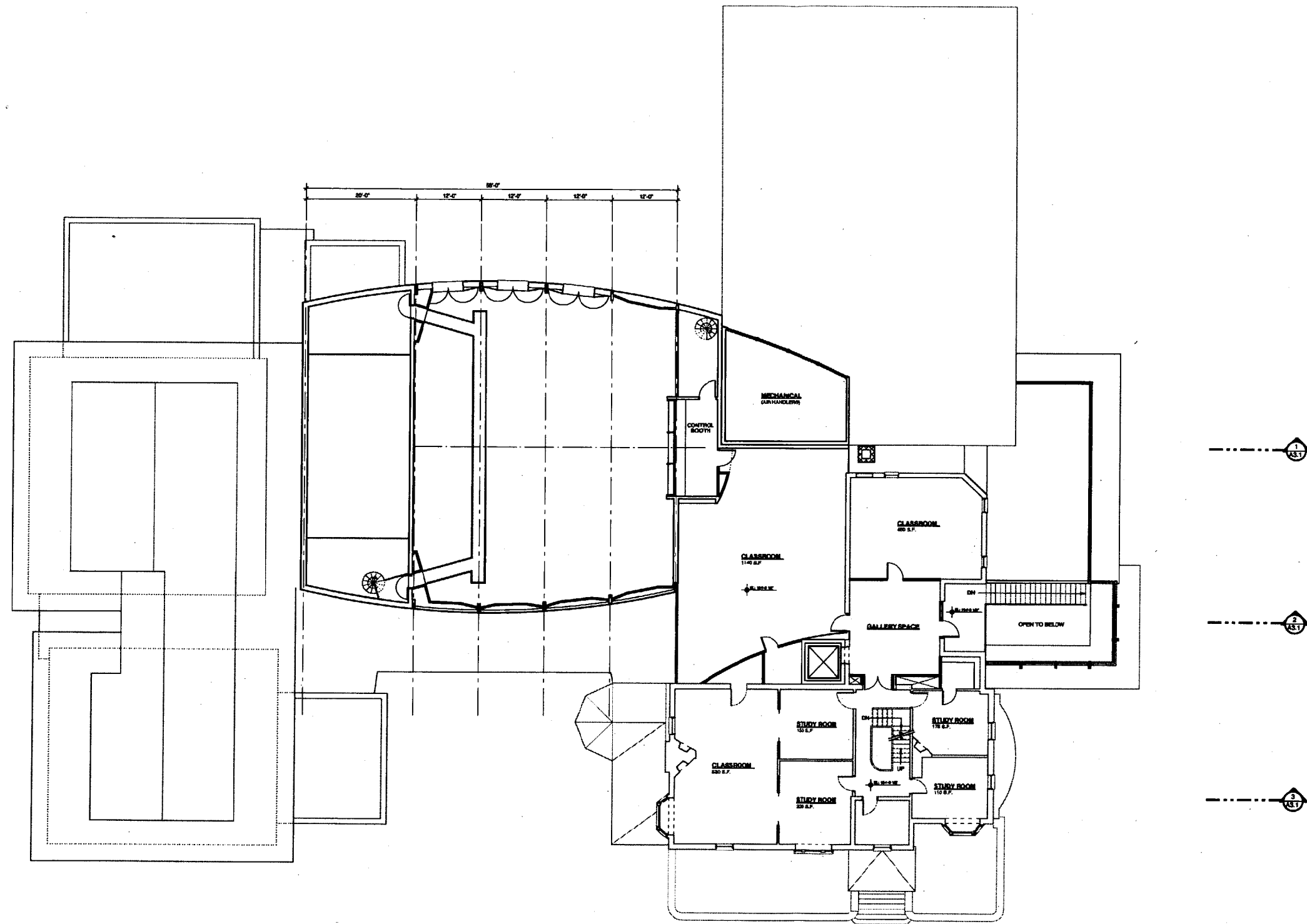
SSA
Scott Stone Architects
10 Franklin Street, Apt. 200
Portland, ME 04101
Tel: 603.775.4400
Fax: 603.775.4401

PROJECT
WAYNFLETE SCHOOL
300 SPRING STREET
PORTLAND, ME
Progress Print
January 30, 2001

TITLE
1ST FLOOR PLAN
Progress Print
January 22, 2001

STATUS: DESIGN DEVELOPMENT
NOT FOR CONSTRUCTION

DATE: 01.22.01	REVISION DATE:
SCALE: 1/8" = 1'-0"	
PROJECT NO: 0016.00	
DRAWN BY: SSA/Scott Stone Architects	
DWG NO. A-1.2	



SECOND FLOOR PLAN

SSA
Scott Stone Architects
15 Franklin Street Apt.
Portland, Maine 04101
Phone: 603.773.4000
Fax: 603.773.4001

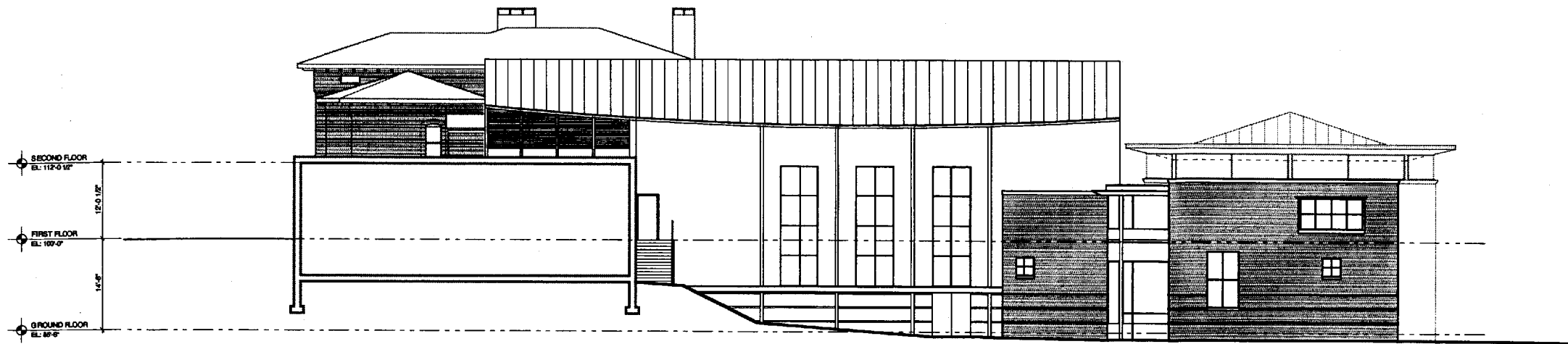
PROJECT
WAYNFLETE SCHOOL
300 SPRING STREET
PORTLAND, ME
Progress Print
January 30, 2001

TITLE
SECOND FLOOR PLAN

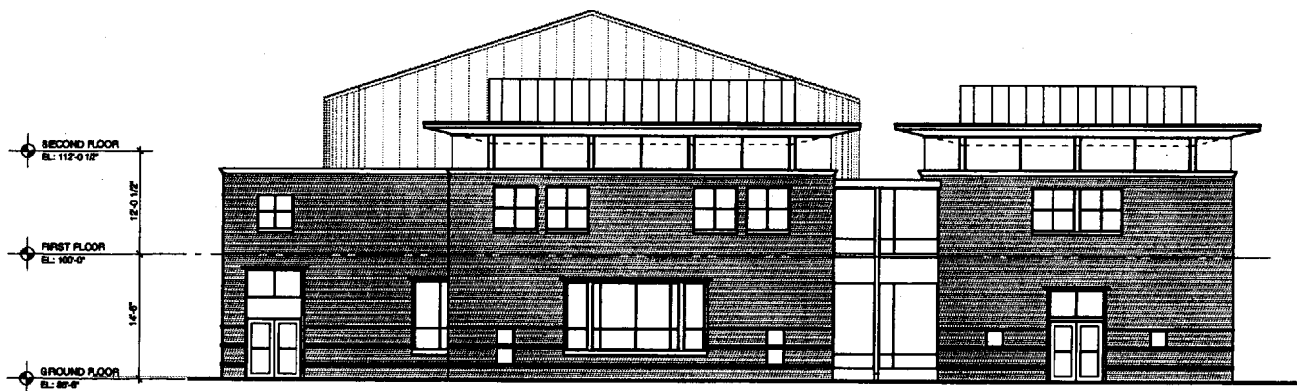
STATUS: DESIGN DEVELOPMENT
NOT FOR CONSTRUCTION

DATE: 01.30.01
SCALE: 1/8" = 1'-0"
PROJECT NO.: 00110.00
DRAWN BY: SSA/Scott Stone Architects

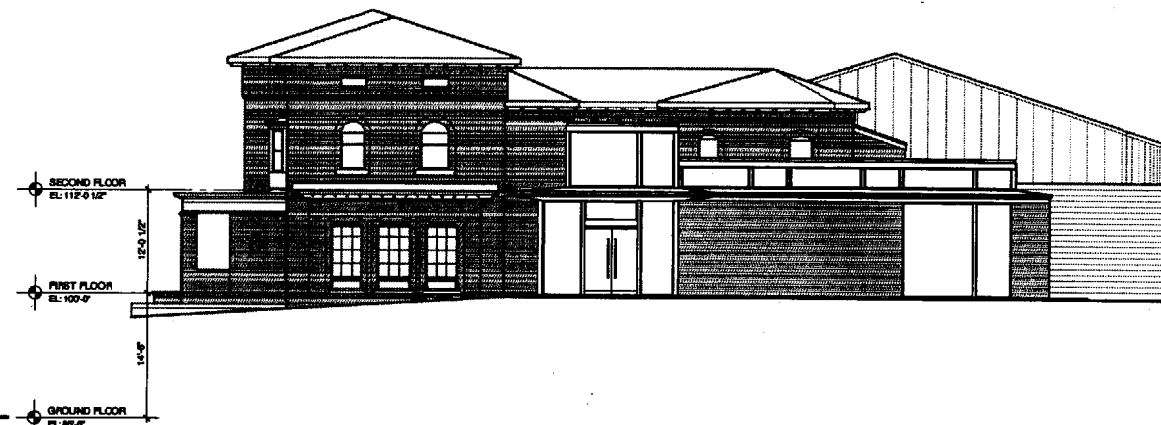
DWG NO. **A-1.3**



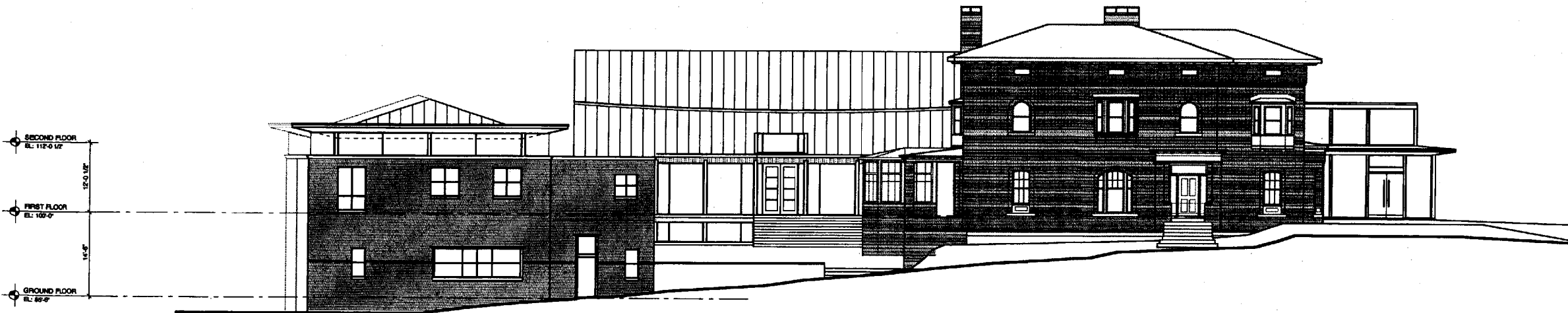
1 WEST ELEVATION
SCALE 1/8" = 1'-0"



2 SOUTH ELEVATION
SCALE 1/8" = 1'-0"



3 NORTH ELEVATION
SCALE 1/8" = 1'-0"



4 EAST ELEVATION
SCALE 1/8" = 1'-0"



PROJECT

WAYNFLETE SCHOOL

380 SPRING STREET
PORTLAND, ME

Progress Print
January 30, 2001

TITLE

ELEVATIONS

STATUS:

DESIGN DEVELOPMENT
NOT FOR CONSTRUCTION

DATE:

01.25.01

REVISION DATE:

SCALE:

1/8" = 1'-0"

PROJECT NO.:

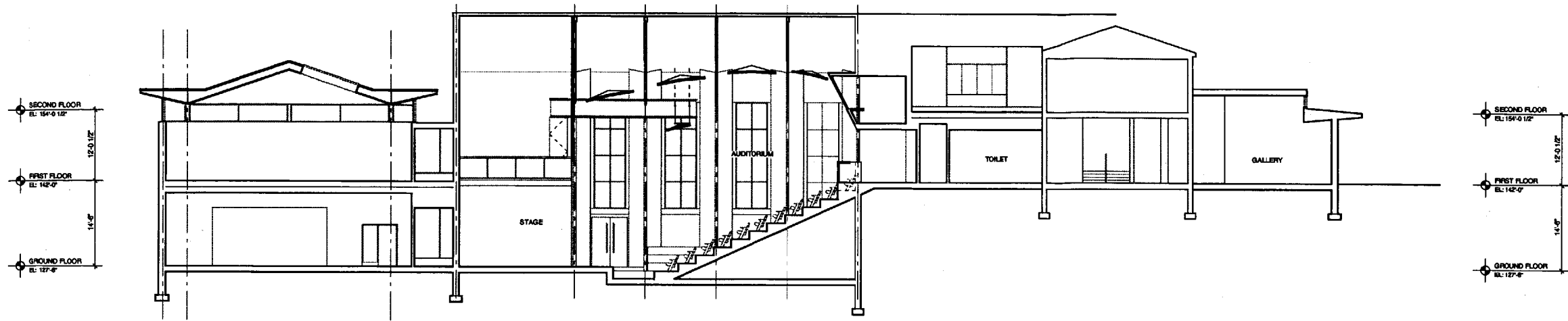
00110.00

DRAWN BY:

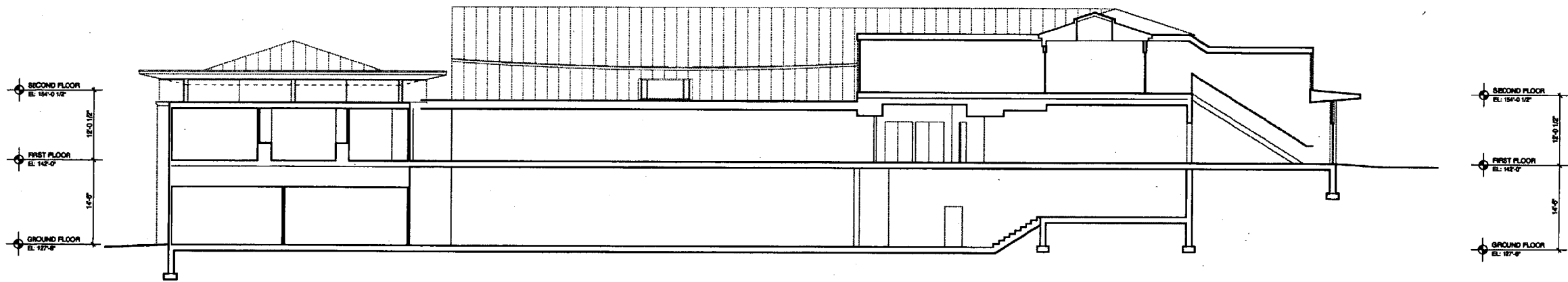
SS&A

DWG NO.:

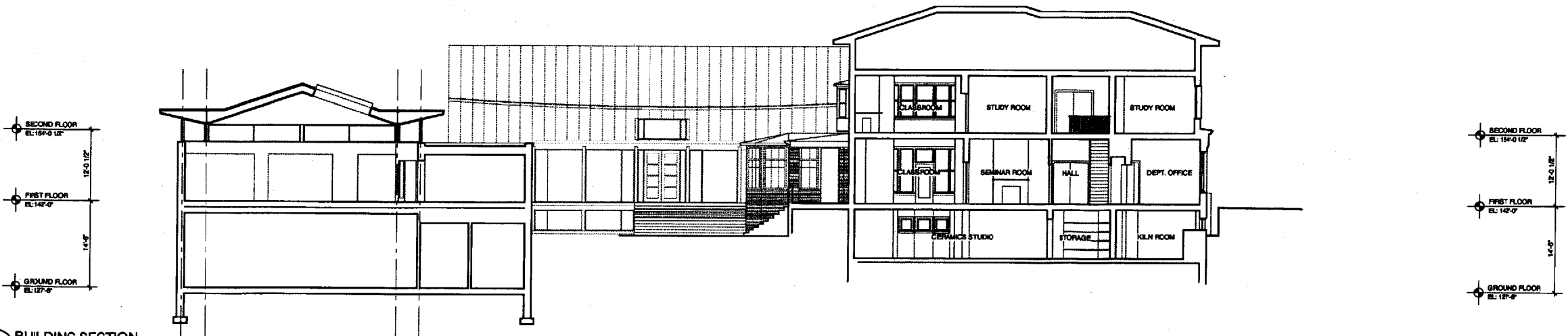
A-2.1



1 BUILDING SECTION
SCALE: 1/8" = 1'-0"



2 BUILDING SECTION
SCALE: 1/8" = 1'-0"



3 BUILDING SECTION
SCALE: 1/8" = 1'-0"



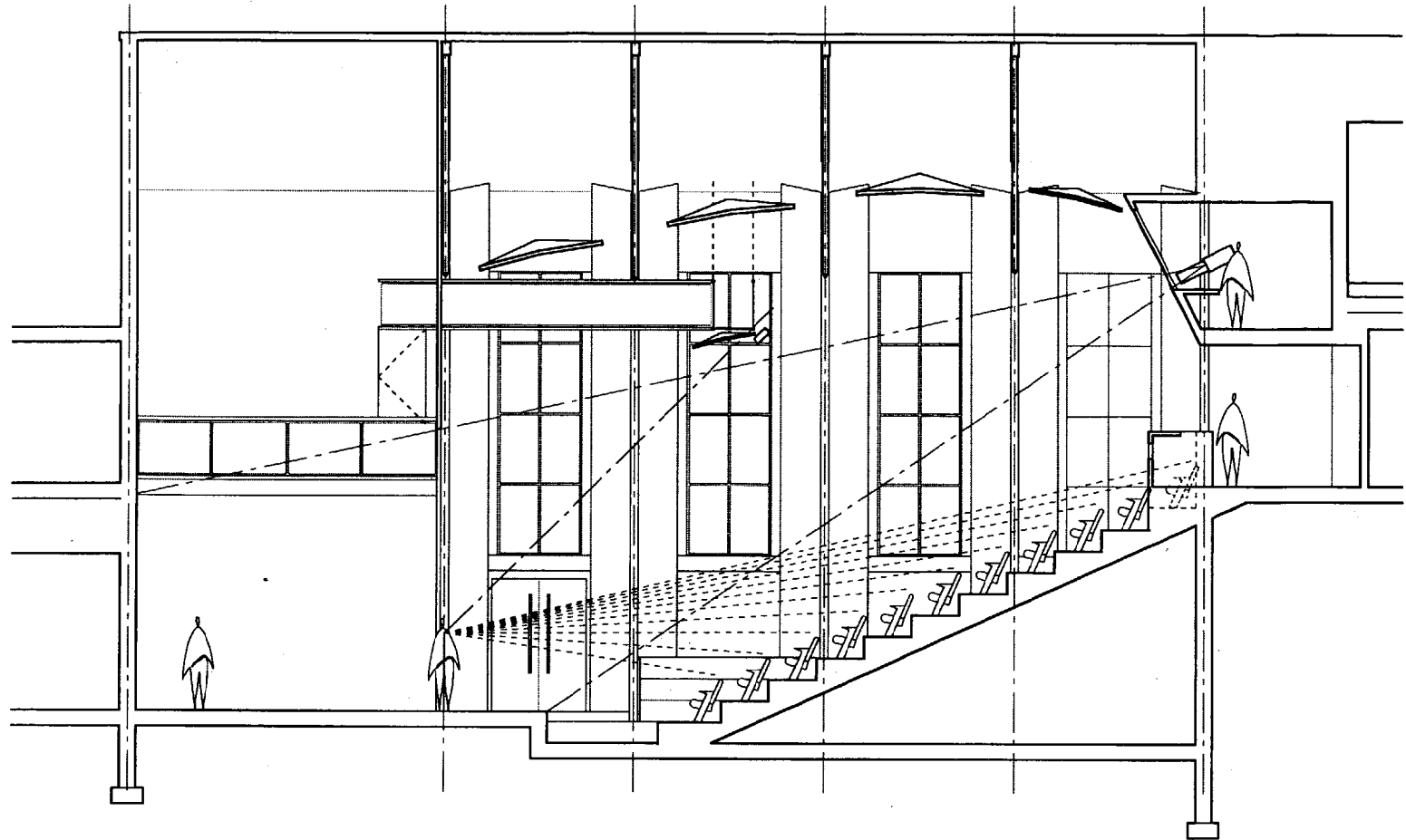
PROJECT
WAYNFLETE SCHOOL
300 SPRING STREET
PORTLAND, ME

TITLE
BLDG SECTIONS

STATUS: **DESIGN DEVELOPMENT**
NOT FOR CONSTRUCTION

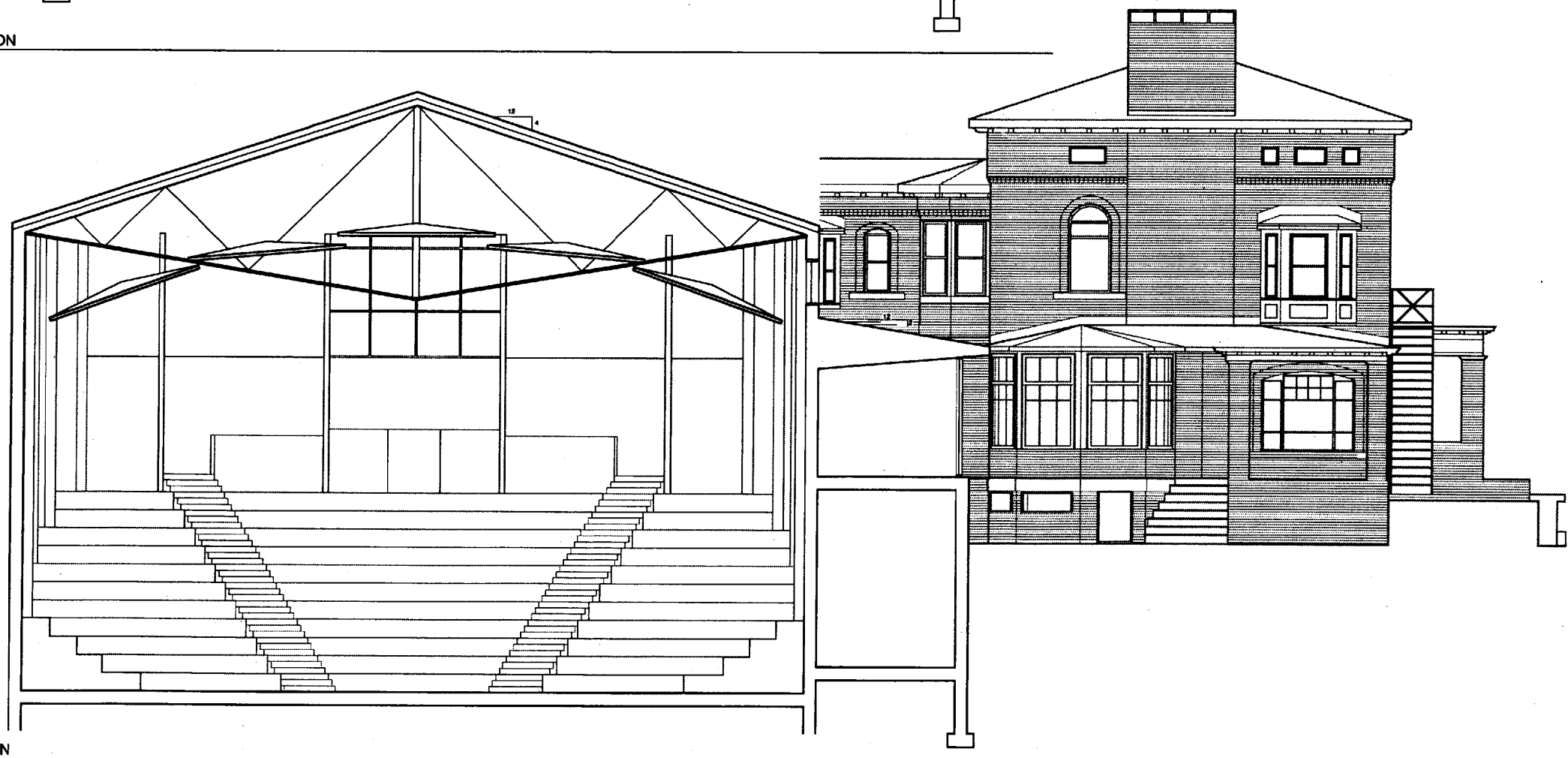
DATE: 01.10.01	REVISION DATE:
SCALE: 1/8" = 1'-0"	
PROJECT NO. 01001.00	
DRAWN BY:	2010 Scott Stone Architects
DWG NO.	A-3.1

SECOND FLOOR
 EL. 154'-0 1/2"
 14'-0"
 FIRST FLOOR
 EL. 142'-0"
 14'-0"
 GROUND FLOOR
 EL. 127'-0"




1 AUDITORIUM SECTION
 SCALE: 1/4" = 1'-0"

SECOND FLOOR
 EL. 154'-0 1/2"
 14'-0"
 FIRST FLOOR
 EL. 142'-0"
 14'-0"
 GROUND FLOOR
 EL. 127'-0"



2 AUDITORIUM SECTION
 SCALE: 1/4" = 1'-0"


 South Maine Architects
 15 Franklin Street, Apt. 100
 Portland, Maine 04101
 (207) 773-2000

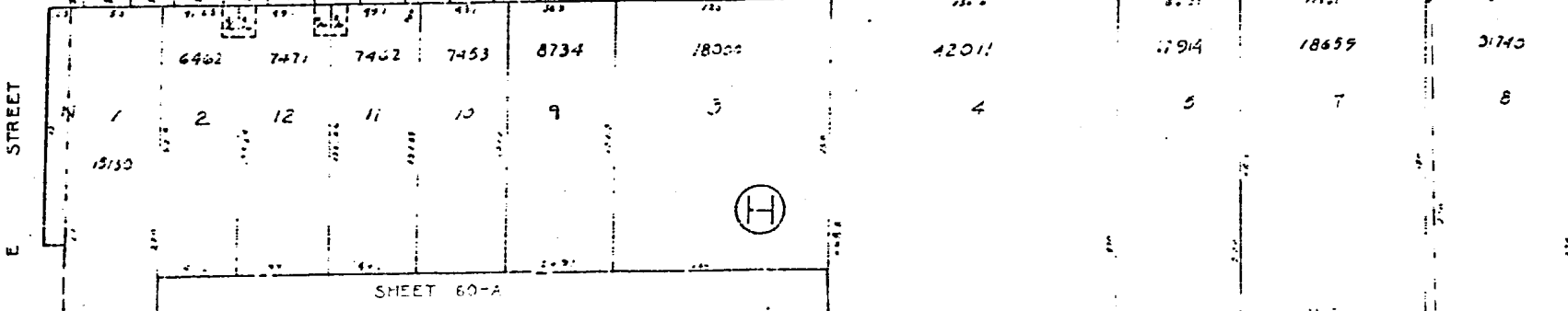
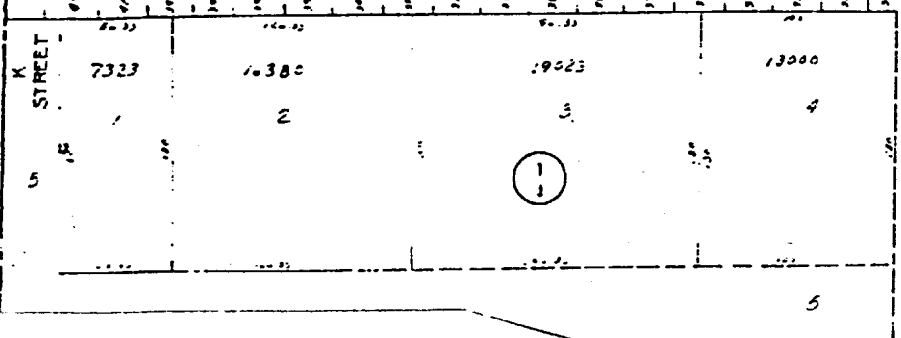
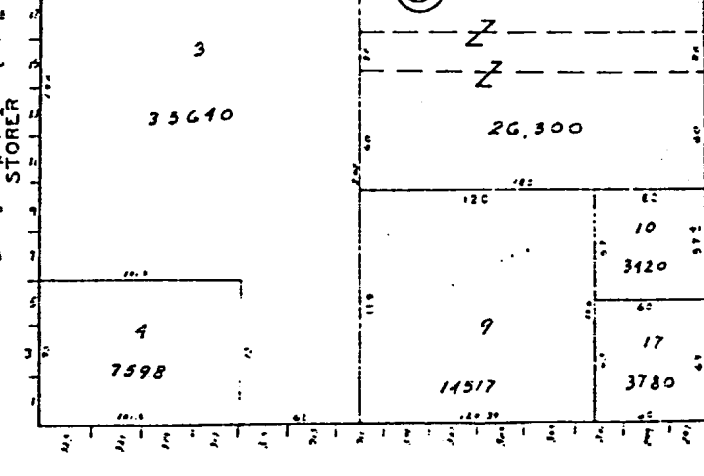
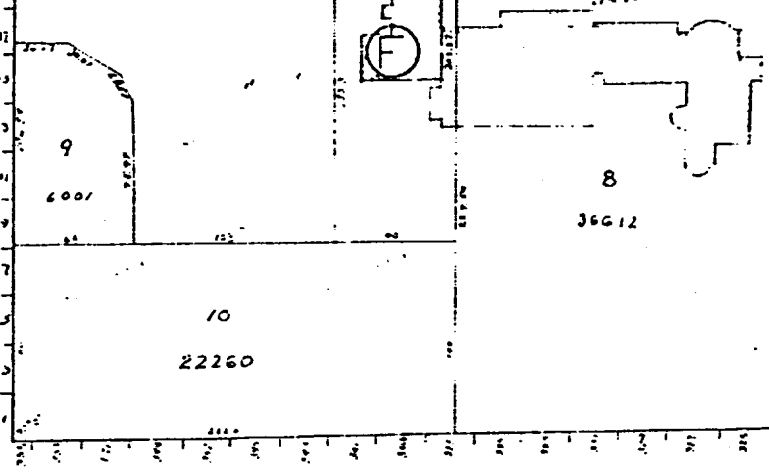
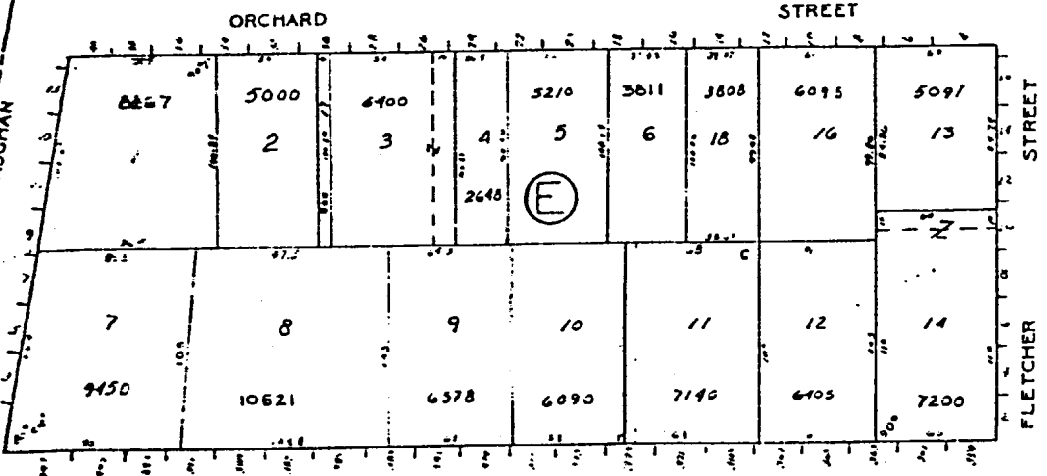
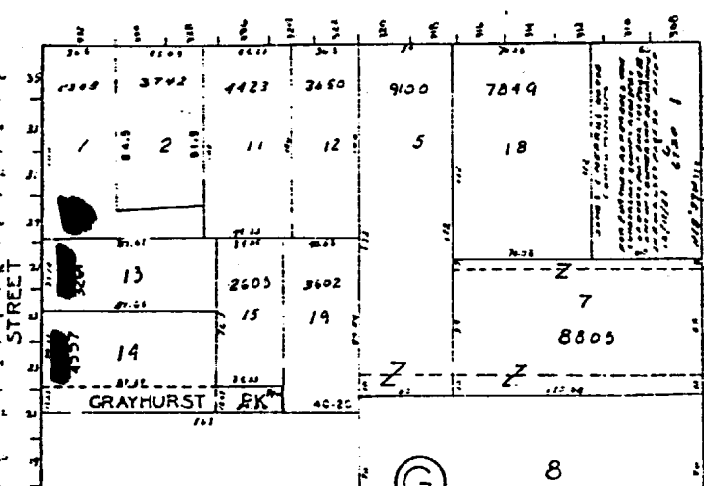
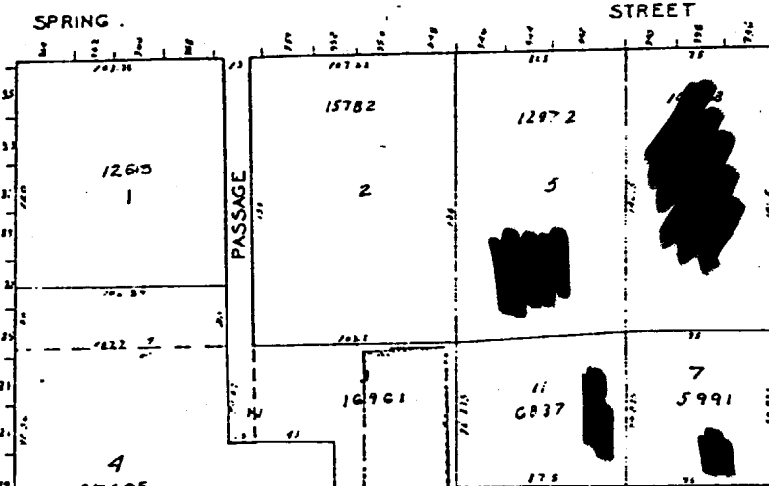
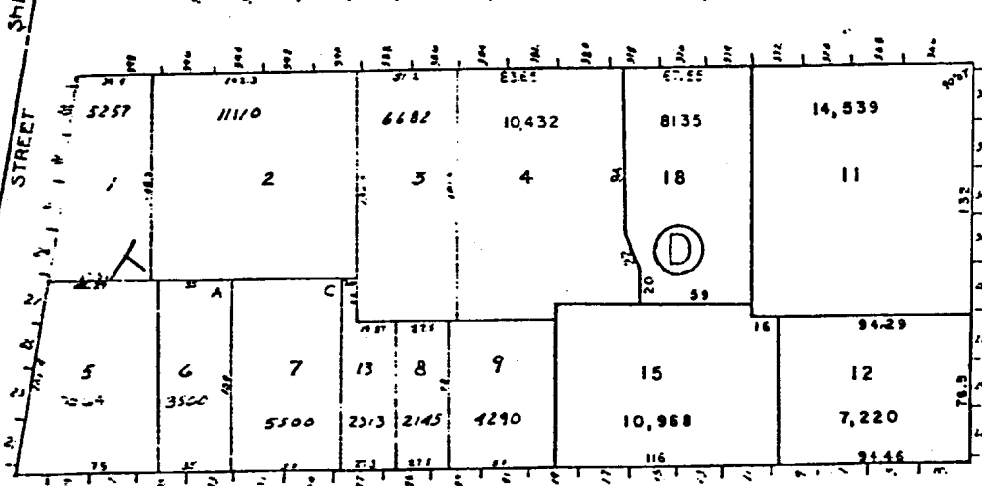
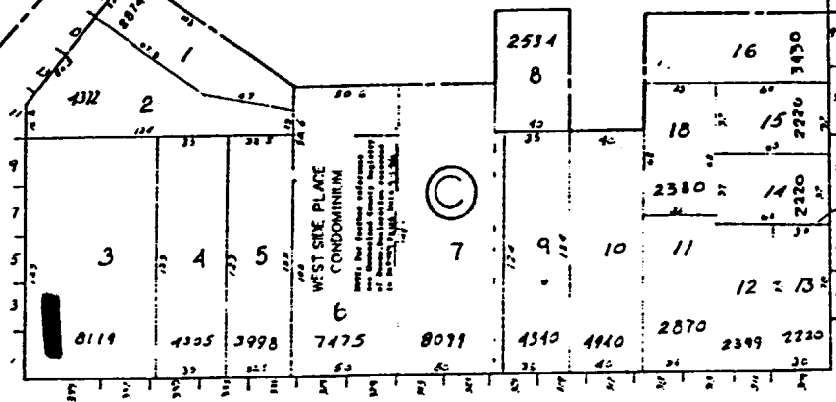
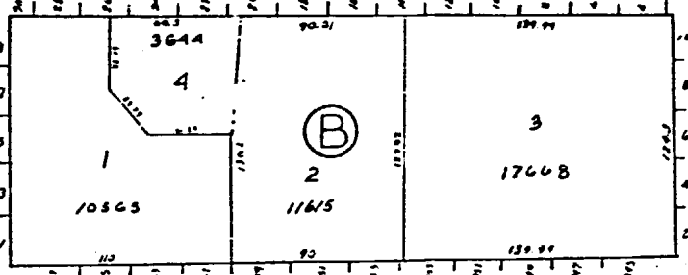
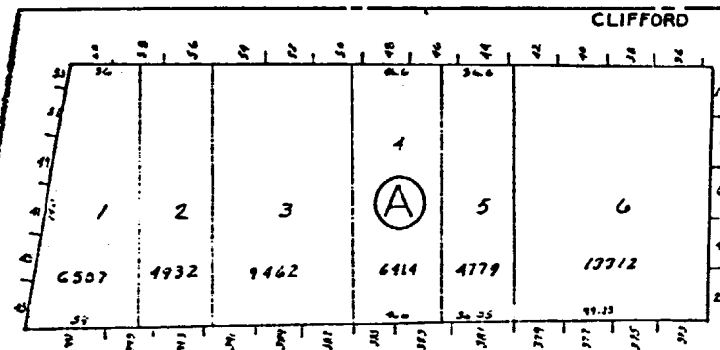
PROJECT
WAYNFLETE SCHOOL
 300 SPRING STREET
 PORTLAND, ME
 Progress Print
 January 30, 2001

TITLE
AUDITORIUM SECTION

STATUS: DESIGN DEVELOPMENT
 NOT FOR CONSTRUCTION

DATE: 11.28.01	REVISION DATE:
SCALE: 1/4" = 1'-0"	
PROJECT NO. 00116.00	
DRAWN BY:	2001 South Maine Architects
DWG NO.	A-x.x

SHEET 62-C



SHEET 60-A

02/08/2001

12:58 PM

DELOGU ORLANDO &
JUDITH OR SURV
33 STORER ST
PORTLAND, ME 04102

MACVANE WILLIAM L WWII VET &
MARGARET E JTS
25 STORER ST
PORTLAND, ME 04102

O'LEARY DANIEL E &
HILARY D BASSETT JTS
27 STORER ST
PORTLAND, ME 04102

UBANS JURIS K & MARA JTS
1 THOMAS ST
PORTLAND, ME 04102

WAYNFLETE SCHOOL THE
~~360 SPRING ST~~
PORTLAND, ME 04102

WAYNFLETE SCHOOL THE
~~360 SPRING ST~~
PORTLAND, ME 04102

Mailed Abutters 2/8/01

Labels Requested For CBL:

- 061 C003
- 061 F005
- 061 F007
- 061 F011
- 061 G001
- 061 G013
- 061 G014