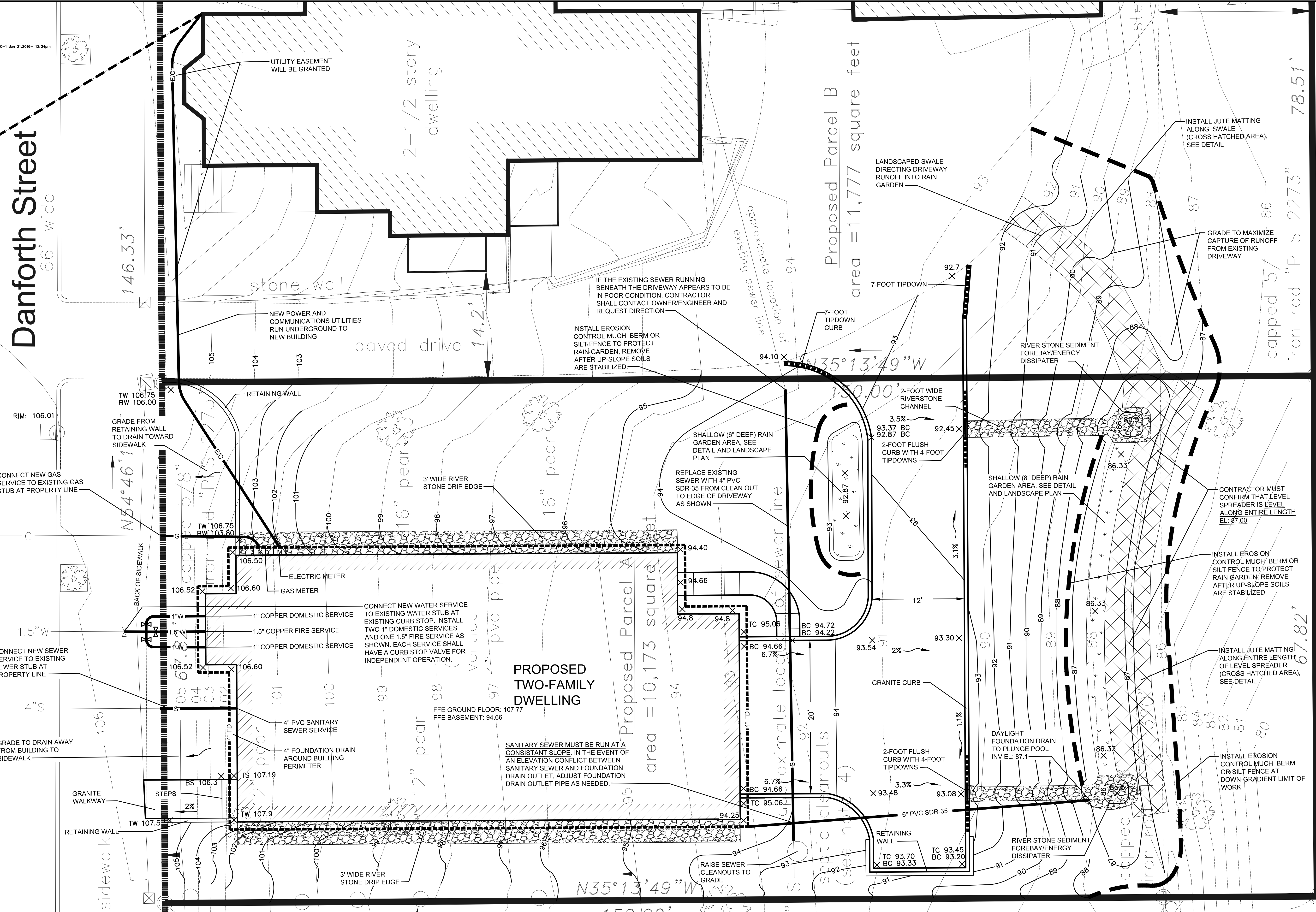


PERMITTING SET

P:\2016\161.06056\380_Danforth\Drawings\Working\Drawings\BloomfieldDevelopment-Working\SitePlan_8_17_16.dwg C-1 Jun 21, 2016- 12:24pm

NOTES

- THE CITY OF PORTLAND REQUIRES A PRE-CONSTRUCTION MEETING BEFORE SITE WORK CAN BEGIN.
- DRAIN PIPING SHOWN WITH SOLID LINES IS NON-PERFORATED PVC SDR 35. DRAIN PIPE SHOWN WITH DASHED LINES IS PERFORATED UNDERDRAIN (PERFORATED PVC SDR 35 - OR - PERFORATED, CORRUGATED HDPE WITH SMOOTH INTERIOR).
- INSTALL EROSION AND SEDIMENTATION CONTROL IN COMPLIANCE WITH THE MAINE DEPARTMENT OF ENVIRONMENTAL PROTECTION'S BEST MANAGEMENT PRACTICES AND GOOD HOUSEKEEPING PRACTICES IN ACCORDANCE WITH APPENDICES A, B AND C OF MAINE DEP CHAPTER 500. CONTRACTOR SHALL UTILIZE VARYING BMPs TO MINIMIZE THE MIGRATION OF EXPOSED SOILS FROM THE SITE. THESE INCLUDE BUT ARE NOT LIMITED TO THE FOLLOWING:
 - INSTALL LOCALIZED SEGMENTS OF MULCH BERM, SILT SOCK, HAY BALES AND/OR CRUSHED STONE CHECK DAMS TO FILTER RUNOFF BEFORE IT LEAVES THE SITE.
 - INSTALL SILT SACKS (OR APPROVED EQUAL) IN DOWNGRADE CATCH BASINS.
 - SWEEP DANFORTH STREET FREQUENTLY. WATER AND/OR VACUUMING SHALL BE USED TO CONTROL DUST WHEN SWEEPING.
- RAIN GARDEN AREAS: THE RAIN GARDEN AREAS ARE SHALLOW DEPRESSIONS INTENDED TO TREAT AND INFILTRATE STORMWATER. THE RAIN GARDEN SOILS ARE SENSITIVE TO CLOGGING FROM EROSION FROM EXPOSED SOILS AND THEREFORE MUST BE PROTECTED DURING CONSTRUCTION. AFTER CONSTRUCTION, RAIN GARDENS MUST BE MAINTAINED ANNUALLY BY REMOVING SEDIMENTS AND DEBRIS (INCLUDING SAND FROM THE DRIVEWAY) FROM THE SEDIMENT FOREBAYS AND RAIN GARDEN AREAS SO THAT THE PROPOSED GRADES ARE MAINTAINED.
- CONTRACTOR SHALL INSPECT ALL EROSION AND SEDIMENTATION CONTROL MEASURES ON A WEEKLY BASIS AND AFTER RAIN/STORM EVENTS. ANY ISSUES IDENTIFIED SHALL BE ADDRESSED AS SOON AS POSSIBLE AND BEFORE ADDITIONAL PRECIPITATION.
- ALL WORK IN THE RIGHT OF WAY SHALL MEET THE CITY OF PORTLAND TECHNICAL MANUAL STANDARDS
- ELEVATIONS ARE BASED ON CITY OF PORTLAND DATUM.
- CONTRACTOR SHALL VERIFY ALL DIMENSIONS AND GRADES IN THE FIELD AND NOTIFY THE ENGINEER IMMEDIATELY OF ANY DISCREPANCIES.
- UTILITY LOCATIONS ARE APPROXIMATE AND SHALL BE VERIFIED PRIOR TO CONSTRUCTION. ANY DISCREPANCIES OR CONFLICTS SHALL BE IMMEDIATELY REPORTED TO THE ARCHITECT/ENGINEER.
- ALL UTILITY INSTALLATIONS SHALL MEET THE REQUIREMENTS OF THE CITY OF PORTLAND, AS WELL AS ANY OTHER LOCAL, STATE, FEDERAL AND UTILITY OWNER REQUIREMENTS.
- SITE CONTRACTOR SHALL REPAIR ALL DISTURBED AREAS IN ACCORDANCE WITH THE EROSION CONTROL PLAN AND DETAILS.
- ALL AREAS DISTURBED BY CONSTRUCTION NOT TO BE PAVED OR OTHERWISE TREATED SHALL BE LOAMED AND SEEDED ACCORDING TO THE PROJECT SPECIFICATIONS.



Project: **BLOOMFIELD DEVELOPMENT**
380 DANFORTH ST
PORTLAND, ME

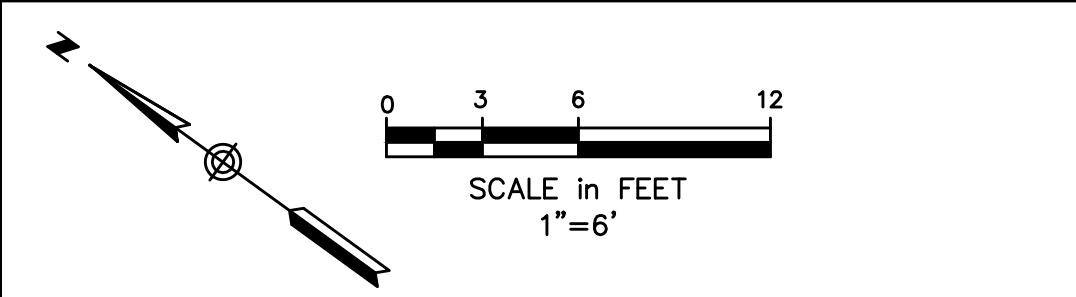
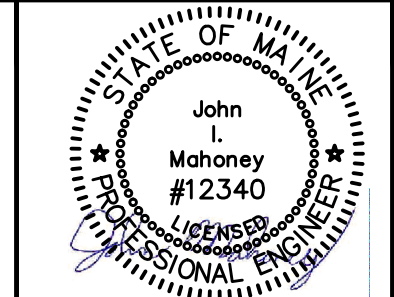
Prepared for:
KAPLAN THOMPSON ARCHITECTS
102 EXCHANGE
STREET 2ND FLOOR
PORTLAND, ME 04101

RANSOM Consulting, Inc.
400 Commercial Street, Suite 404,
Portland, Maine 04101
Tel (207) 772-2891
Fax (207) 772-3248
www.ransomenv.com

KAPLAN THOMPSON ARCHITECTS
424 fore st., portland, me 04101
207-842-2888 fax: 842-2828
jesse@kaplanthompson.com

CALLAHAN + LEBELEU
landscape architects
8 loveitt street
south portland, me 04106
www.callahanlebeu.com

GRADING, DRAINAGE AND UTILITIES PLAN



Sheet No: **C1**

No.	Revision/Issue	Date
C		
B	CLIENT REVIEW	06-21-16
A	CLIENT REVIEW	06-17-16

Design by: **JIM**
Checked by: **SJB**

Drawn by: **KJT**
Approved by: **SJB**

Project: **161.06056**