

**SECTION VIEW**  
SCALE: 1/4"=1'-0"

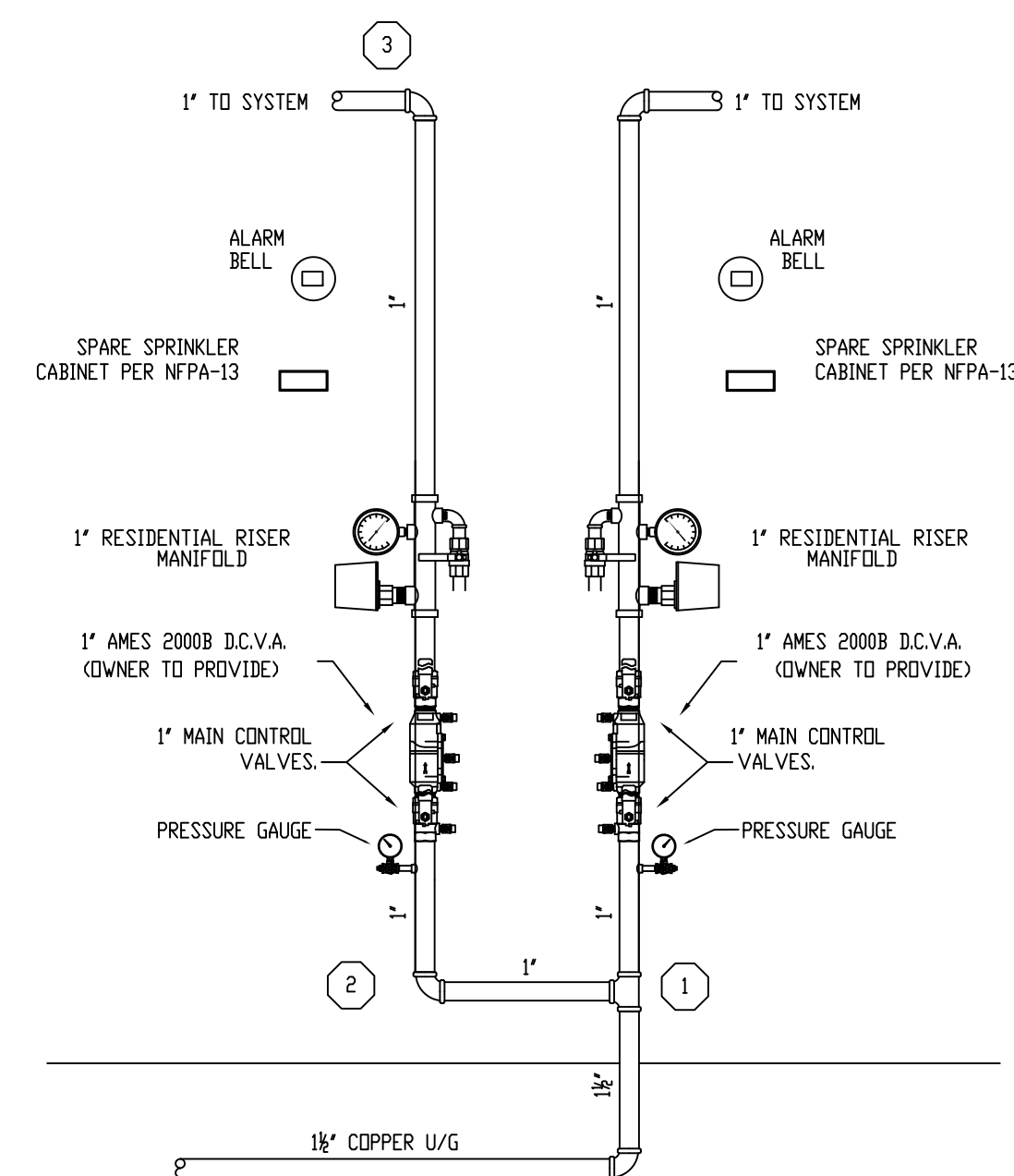
**GENERAL NOTES**

SYSTEM TO BE DESIGNED AND INSTALLED IN ACCORDANCE WITH NFPA-13D 2016.  
 PIPE AND FITTINGS TO BE COMBINATION OF BLACK STEEL, SCH. 40 TYPE AND APPROVED BLAZEMASTER PLASTIC CPVC DESIGNED AND APPROVED TO BE USED WITH THIS STANDARD.  
 ALL HANGERS TO BE SPACED IN ACCORDANCE WITH MANUFACTURER'S RECOMMENDATIONS.  
 MAX SPACING OF RESIDENTIAL PENDENT SPRINKLERS TO BE 16'x16'.  
 MAX SPACING OF RESIDENTIAL PENDENT SPRINKLERS TO BE 16'x16'.  
 ALL WIRING OF DEVICES BY OTHERS.  
 SPARE SPRINKLERS OF EACH TYPE SHALL BE PROVIDED PER NFPA 13.

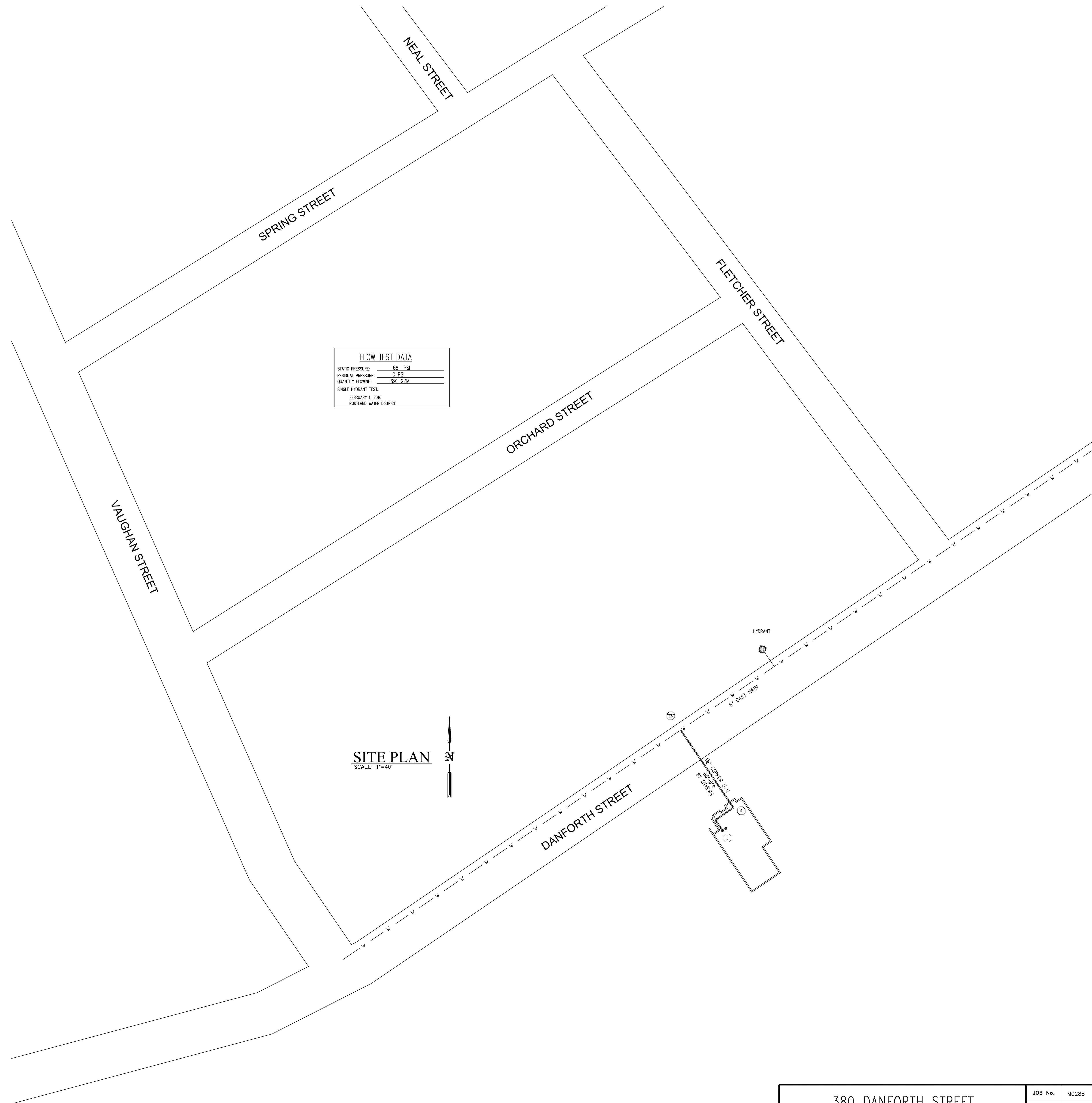
SPRINKLERS MAY BE OMITTED FROM THE FOLLOWING:

- 1) BATHROOMS WHERE THE AREA DOES NOT EXCEED 55 SQ. FT. AND THE WALLS AND CEILINGS, INCLUDING BEHIND FIXTURES, ARE OF NON COMBUSTIBLE OR LIMITED COMBUSTIBLE MATERIALS PROVIDING A 15 MINUTE THERMAL BARRIER.
- 2) CLOTHES CLOSETS, LINEN CLOSETS, AND PANTRIES WITHIN THE DWELLING UNITS WHERE THE AREA OF THE SPACE DOES NOT EXCEED 24 SQ. FT. AND THE WALLS AND CEILINGS ARE SURFACED WITH NON COMBUSTIBLE OR LIMITED COMBUSTIBLE MATERIALS AS DEFINED BY NFPA.
- 3) ANY PORCHES, BALCONIES, CORRIDORS, AND STAIRS THAT ARE OPEN AND ATTACHED.
- 4) ATTICS, PENTHOUSE EQUIPMENT ROOMS, CRAWL SPACES, FLOOR/CEILING SPACES, ELEVATOR SHAFTS, AND OTHER CONCEALED SPACES THAT ARE NOT USED OR INTENDED FOR LIVING PURPOSES OR STORAGE.

MAINTENANCE OF THE SPRINKLER SYSTEM IS THE RESPONSIBILITY OF THE OWNER.  
 PROTECTION OF THE SPRINKLER SYSTEM AGAINST FREEZING IS THE RESPONSIBILITY OF THE OWNER.



**FIRE SPRINKLER RISER DETAIL**  
SCALE: N.T.S.



**FLOW TEST DATA**

STATIC PRESSURE:	66 PSI
RESIDUAL PRESSURE:	0 PSI
QUANTITY FLOWING:	691 GPM

SINGLE HYDRANT TEST.  
 FEBRUARY 1, 2016  
 PORTLAND WATER DISTRICT

**SITE PLAN**  
SCALE: 1"=40'

REVISIONS	NOTES	SPRINKLER TYPE	IDENTIFICATION NO.	MFG.	ESC.	MODEL	FINISH	ORIFICE	TEMP.	SYMBOL	QUANT.	STANDARD SYMBOLS	STANDARD SYMBOLS	INSPECTIONS
TOTAL SPRINKLERS THIS DRAWING														

<ul style="list-style-type: none"> <li>— POST INDICATOR VALVE</li> <li>— KEY VALVE</li> <li>— FIRE HYDRANT</li> <li>— FIRE DEPT. CONNECTION</li> <li>— O.S. &amp; Y GATE VALVE</li> <li>— SWING CHECK VALVE</li> <li>— NEW UNDERGROUND</li> <li>— EXIST UNDERGROUND</li> </ul>	<ul style="list-style-type: none"> <li>— ALARM CHECK VALVE</li> <li>— RISER W/ALARM VALVE</li> <li>— RISER W/DRY VALVE</li> <li>— RISER W/ELEC. FLOW SWITCH</li> <li>— RISER W/DELUGE VALVE</li> <li>— WATER MOTOR BELL</li> <li>— ELECTRIC BELL</li> <li>— FLUSH FIRE DEPT. CONNECTION</li> </ul>
--	--

1. _____ 2. _____ 3. _____ 4. _____ 5. _____ RESPONSIBLE MANAGING SUPERVISOR #348 CONTRACTOR LICENSE #295	<b>380 DANFORTH STREET</b> <b>PORTLAND, MAINE 04102</b> <b>FIRE PROTECTION PLAN</b> <b>FREEDOM FIRE PROTECTION, INC.</b> <b>209 QUAKER RIDGE ROAD</b> <b>CASCO, MAINE 04015</b>	JOB No. M0288 DATE 12/12/16 DRAWN BY MJN SCALE AS NOTED SHEET No. FP-1 of 2
---	--	---