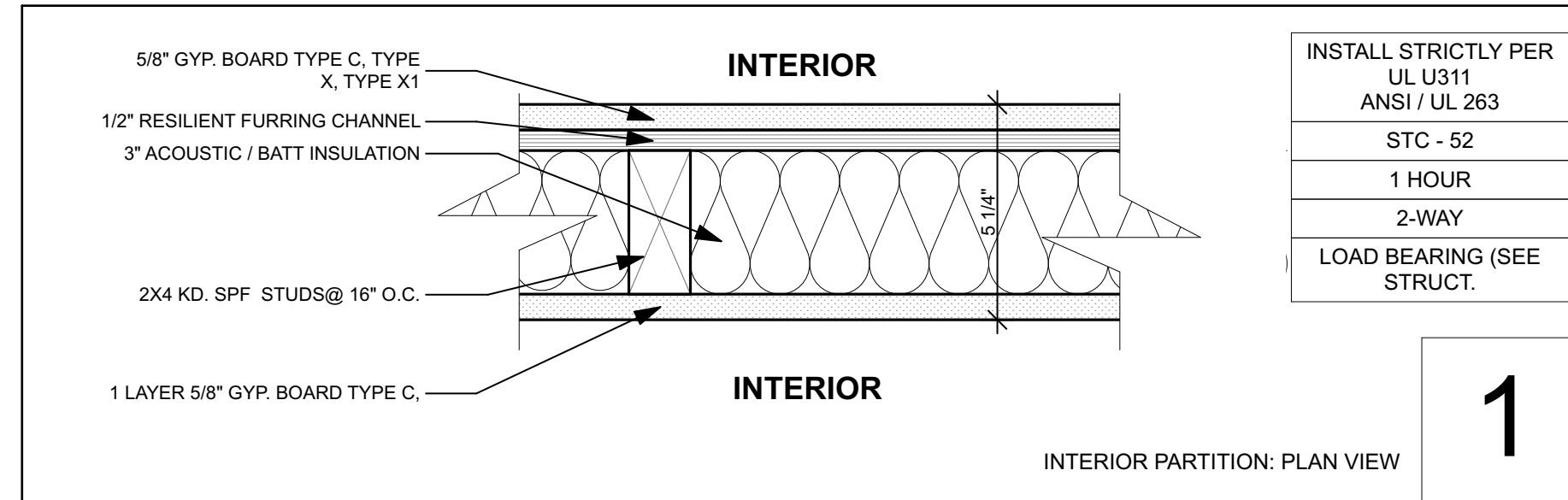


ASSEMBLY NOTES

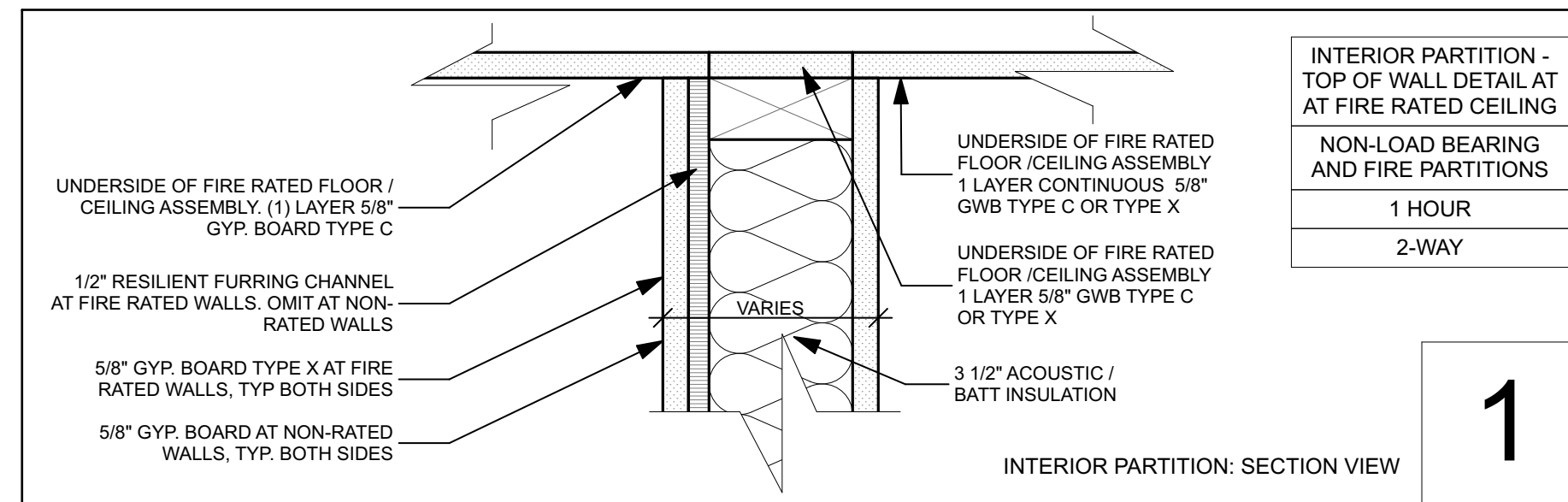
- A PITCHED ROOFS: ~ R-66.4**
Self-Sealing Asphalt Shingles,
On Roofing Underlayment,
On Roof Sheathing (See Struct.),
On PE Truss (See Struct.) w/1'-6" Loose Fill Cellulose Insulation,
On 1x Strapping
On Vapor Retarder & Air Barrier Membrane: Intello ProClima Plus,
On 5/8" GWB Ceiling,
Dropped Ceilings where applicable - See RCP
- A2 PITCHED ROOFS (@ CATHEDRAL CEILING):**
Self-Sealing Asphalt Shingles,
On Roofing Underlayment,
On Roof Sheathing w/ Taped Seams (Air Barrier)(See Struct.),
On PE Truss (See Struct.), w/Dense Pack Cellulose Insulation full cavity
On 1x Strapping
On Vapor Retarder Membrane: Intello ProClima Plus,
On 5/8" GWB Ceiling
- B PITCHED ROOF (@ EAVES):**
Self-Sealing Asphalt Shingles,
On Roofing Underlayment,
On Roof Sheathing (See Struct.),
On PE Truss or Roof Framing Per Structural (See Struct.)
On Painted 3/4" MDO Soffit,
See Details for Fascia, Venting and Drip Edge information,
Overhangs Vary. See Roof Plan.
- C EXTERIOR WALL: ~ R-33.7**
Exterior Fibercement Siding (See Elevations for Extents),
On (1x K.D. strapping w/ black vinyl bug screen),
On Air Barrier: Henry VP100,
On 1/2" CDX Plywood (See Struct.),
On 10" Double Stud Framing w/Full-Depth Dense Packed Cellulose
On MemBrain Vapor Retarder Membrane (stapled over insul. netting),
On 5/8" GWB.
- D CONC. FOUND. WALL: ~R-14 @ CONC. FOUND. STEPPED WALL**
Free Draining Backfill,
On Sheet Waterproofing w/ Dimple Mat, Fluid-Applied Damproofing,
On Reinforced Concrete Wall (See Struct.),
On 2" Foil Faced Polyiso Insul. (R-13) Taped & Sealed,
On 5/8" GWB
- E CONC. FOUND. WALL (AT CRAWLSPACE EXTERIOR):**
Free Draining Backfill,
On Sheet Waterproofing w/ Dimple Mat, Fluid-Applied Damproofing
Reinforced Concrete Wall (See Struct.),
On 2" EPS insulation, extend 24" min. below sub-slab EPS (See details)
- F INTERIOR SLAB ON GRADE: ~ R-13.6**
Sealed Reinforced 4" Concrete slab (See Struct.),
On 15 Mil. min. Poly Vapor Barrier Taped and Sealed,
On 3" Rigid EPS Insulation,
On 6" Crushed Gravel Fill (No Fines)
- G EXPOSED FRAMED FLOORS:**
Finish Floor Material (See Interior Finish Schedule),
On T+G Sheathing (See Struct.),
On Floor Joists (See Struct.) w/Full-Depth Dense Packed Cellulose
On 1/2" CDX Plywood,
On Henry VP100,
On 1x Furring,
On Painted MDO Soffit

SEE A-4.0 FOR INTERIOR FRAMED FLOOR DETAILS
SEE A-4.0 FOR INTERIOR FIRE RATED WALL DETAIL



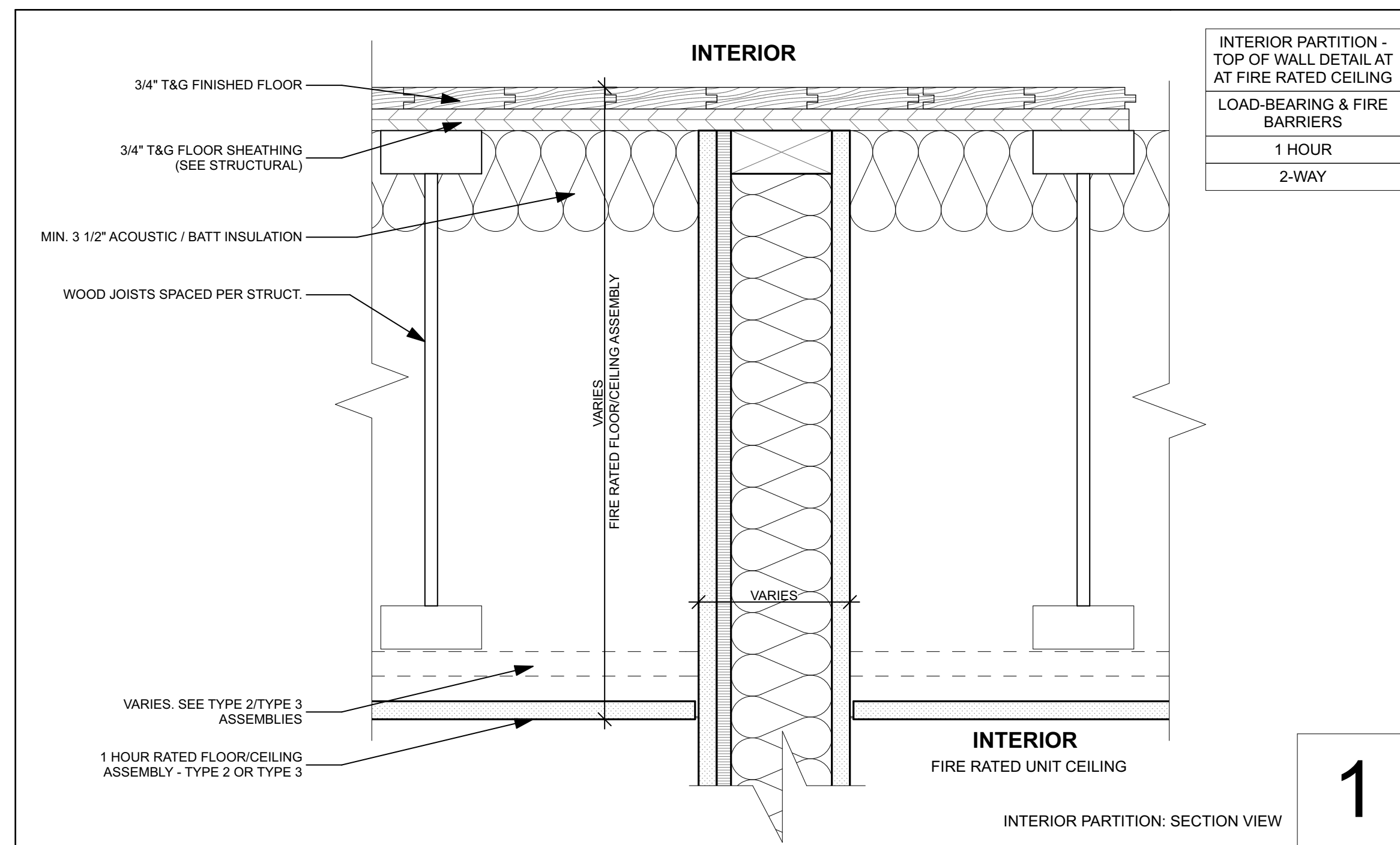
INSTALL STRICTLY PER
UL U311
ANSI / UL 263
STC - 52
1 HOUR
2-WAY
LOAD BEARING (SEE STRUCT.)

1



INTERIOR PARTITION - TOP OF WALL DETAIL AT AT FIRE RATED CEILING
NON-LOAD BEARING AND FIRE PARTITIONS
1 HOUR
2-WAY

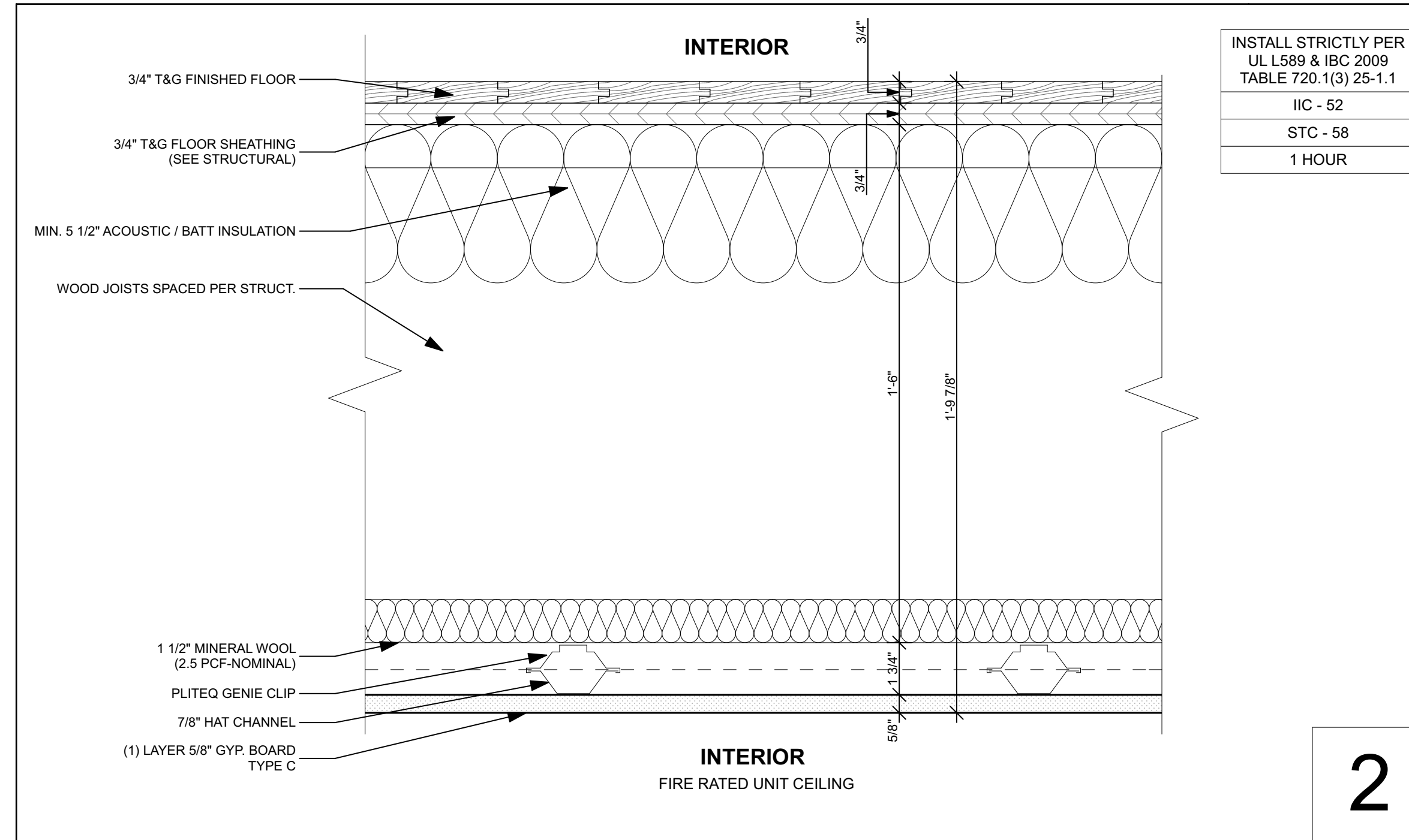
1



INTERIOR PARTITION - TOP OF WALL DETAIL AT AT FIRE RATED CEILING
LOAD-BEARING & FIRE BARRIERS
1 HOUR
2-WAY

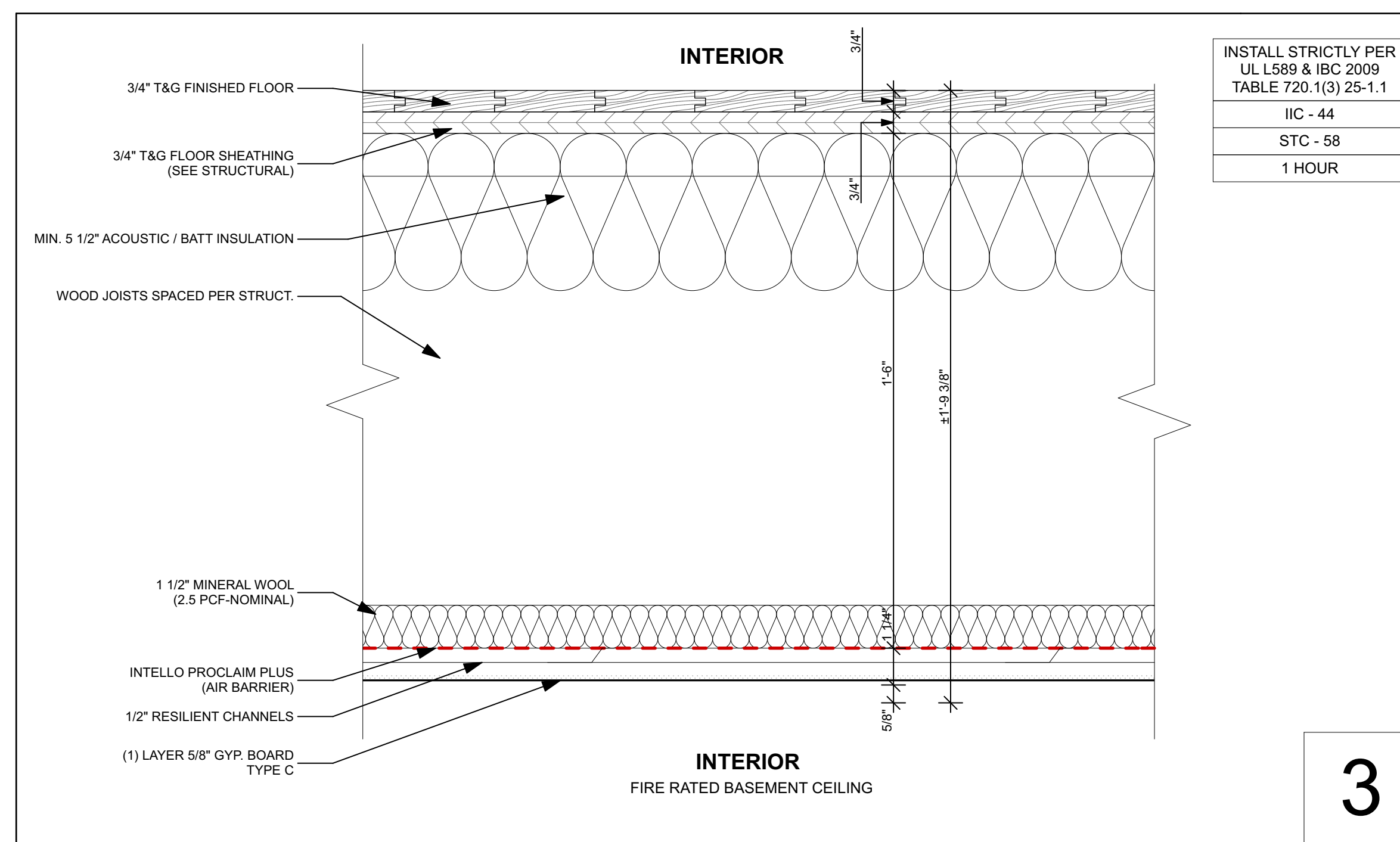
1

TOP OF WALL DETAIL AT LOAD BEARING WALLS & FIRE BARRIERS



INSTALL STRICTLY PER
UL L589 & IBC 2009
TABLE 720.1(3) 25-1.1
ICC - 52
STC - 58
1 HOUR

2

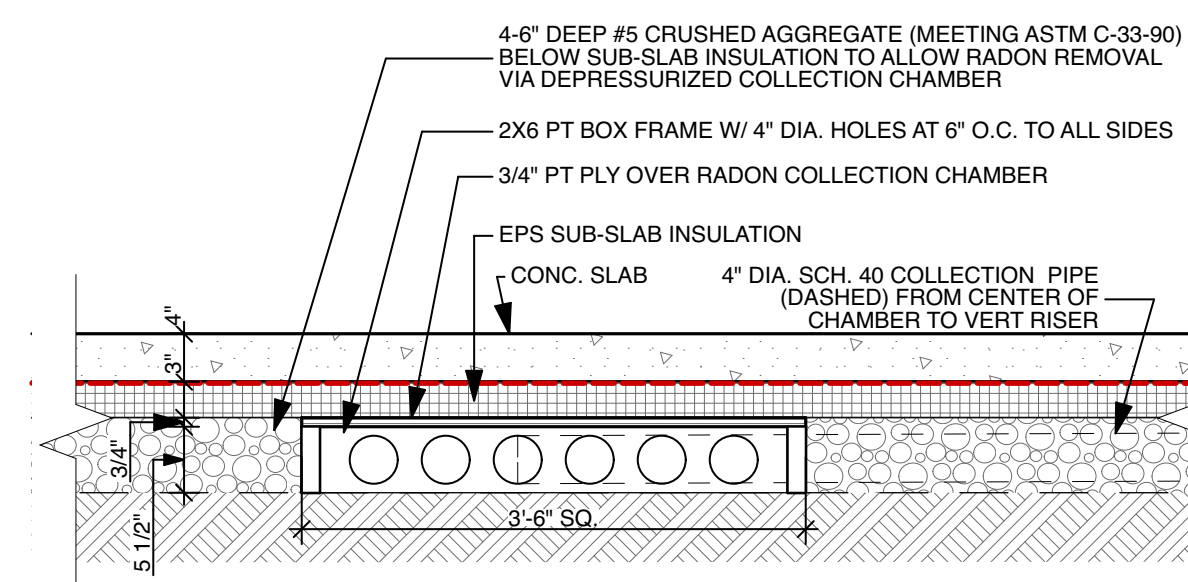


INSTALL STRICTLY PER
UL L589 & IBC 2009
TABLE 720.1(3) 25-1.1
ICC - 44
STC - 58
1 HOUR

3

2 FIRE RATED ASSEMBLIES

SCALE: 3/4" = 1'-0"



1 RADON SUCTION PIT

SCALE: 3/4" = 1'-0"

NOT FOR CONSTRUCTION
PROJECT NO: BMF2
DATE: 01/18/17
DRAWN BY: JT/CA
PHASE: CD PRICING

SECTION DETAILS

A-4.0