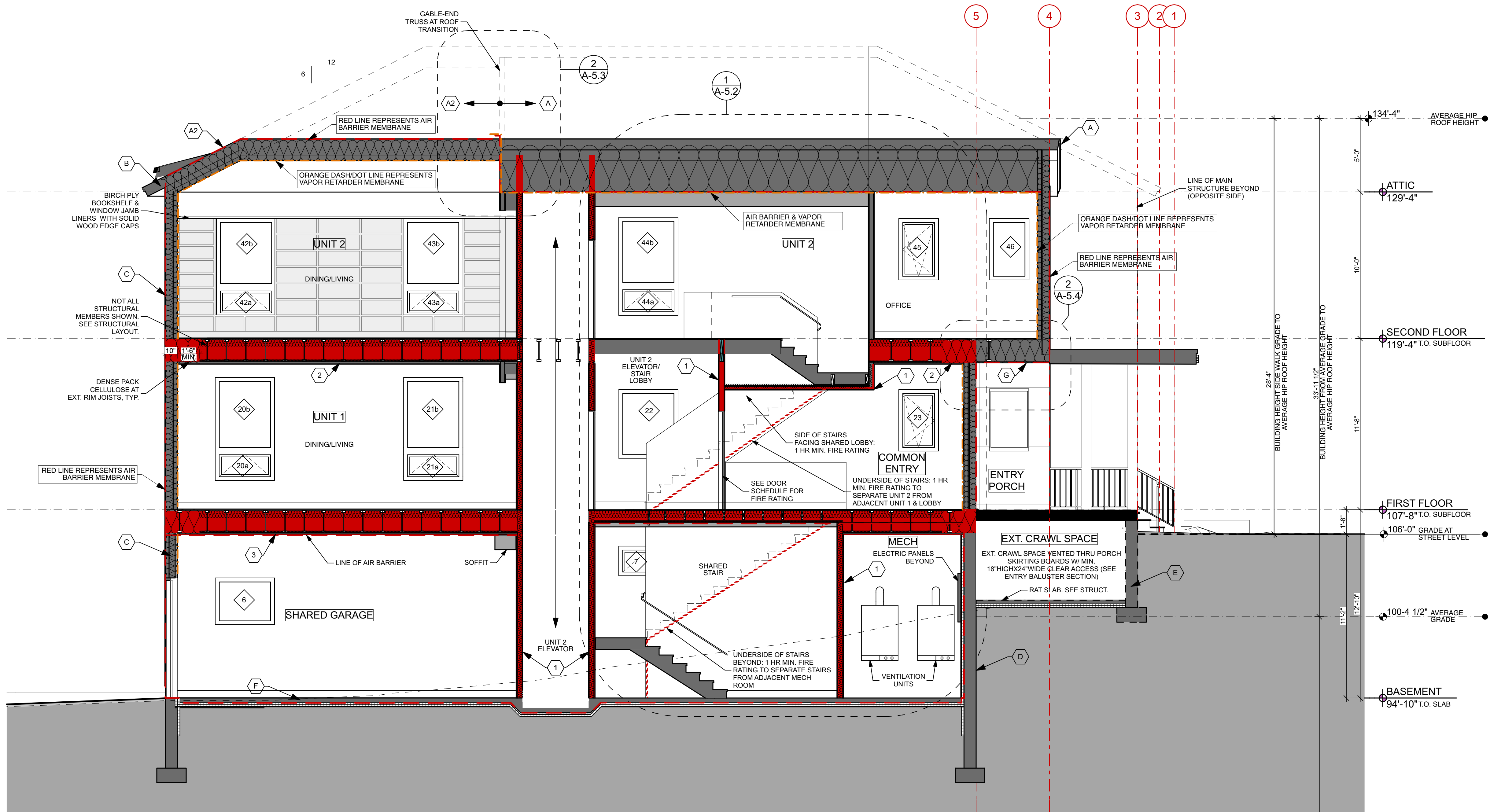


PROJECT:

**NEW TWO-FAMILY DWELLING**

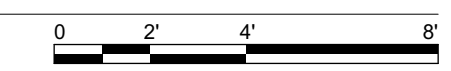
380 DANFORTH  
PORTLAND ME 04101



**ASSEMBLY NOTES**

- (A) PITCHED ROOFS: ~ R-66.4**  
Self-Sealing Asphalt Shingles,  
On Roofing Underlayment,  
On Roof Sheathing (See Struct.),  
On PE Truss (See Struct.) w/1'-6" Loose Fill Cellulose Insulation,  
On 1x Strapping  
On Vapor Retarder & Air Barrier Membrane: Intello ProClima Plus,  
On 5/8" GWB Ceiling,  
Dropped Ceilings where applicable - See RCP
  - (A2) PITCHED ROOFS (@ CATHEDRAL CEILING):**  
Self-Sealing Asphalt Shingles,  
On Roofing Underlayment,  
On Roof Sheathing w/ Taped Seams (Air Barrier)(See Struct.),  
On PE Truss (See Struct.), w/Dense Pack Cellulose Insulation full cavity  
On 1x Strapping  
On Vapor Retarder Membrane: Intello ProClima Plus,  
On 5/8" GWB Ceiling
  - (B) PITCHED ROOF (@ EAVES):**  
Self-Sealing Asphalt Shingles,  
On Roofing Underlayment,  
On Roof Sheathing (See Struct.),  
On PE Truss or Roof Framing Per Structural (See Struct.)  
On Painted 3/4" MDO Soffit,  
See Details for Fascia, Venting and Drip Edge information,  
Overhangs Vary. See Roof Plan.
  - (C) EXTERIOR WALL: ~ R-33.7**  
Exterior Fibercement Siding (See Elevations for Extents),  
On (1x K.D. strapping w/ black vinyl bug screen),  
On Air Barrier: Henry VP100,  
On 1/2" CDX Plywood (See Struct.),  
On 10" Double Stud Framing w/Full-Depth Dense Packed Cellulose  
On MemBrain Vapor Retarder Membrane (stapled over insul. netting),  
On 5/8" GWB,
  - (D) CONC. FOUND. WALL: ~R-14 @ CONC. FOUND. STEPPED WALL**  
Free Draining Backfill,  
On Sheet Waterproofing w/ Dimple Mat, Fluid-Applied Damproofing,  
On Reinforced Concrete Wall (See Struct.),  
On 2" Foil Faced Polyiso Insul. (R-13) Taped & Sealed,  
On 5/8" GWB
  - (E) CONC. FOUND. WALL (AT CRAWLSPACE EXTERIOR):**  
Free Draining Backfill,  
On Sheet Waterproofing w/ Dimple Mat, Fluid-Applied Damproofing  
Reinforced Concrete Wall (See Struct.),  
On 2" EPS insulation, extend 24" min. below sub-slab EPS (See details)
  - (F) INTERIOR SLAB ON GRADE: ~ R-13.6**  
Sealed Reinforced 4" Concrete slab (See Struct.),  
On 15 Mil. min. Poly Vapor Barrier Taped and Sealed,  
On 3" Rigid EPS Insulation,  
On 6" Crushed Gravel Fill (No Fines)
  - (G) EXPOSED FRAMED FLOORS:**  
Finish Floor Material (See Interior Finish Schedule),  
On T+G Sheathing (See Struct.),  
On Floor Joists (See Struct.) w/Full-Depth Dense Packed Cellulose  
On 1/2" CDX Plywood,  
On Henry VP100,  
On 1x Furring,  
On Painted MDO Soffit
- SEE A-4.0 FOR INTERIOR FRAMED FLOOR DETAILS  
SEE A-4.0 FOR INTERIOR FIRE RATED WALL DETAIL

**1 SECTION: N-S**  
SCALE: 1/4" = 1'-0"



NOT FOR CONSTRUCTION  
PROJECT NO: BMF2  
DATE: 01/18/17  
DRAWN BY: JT/CA  
PHASE: CD PRICING