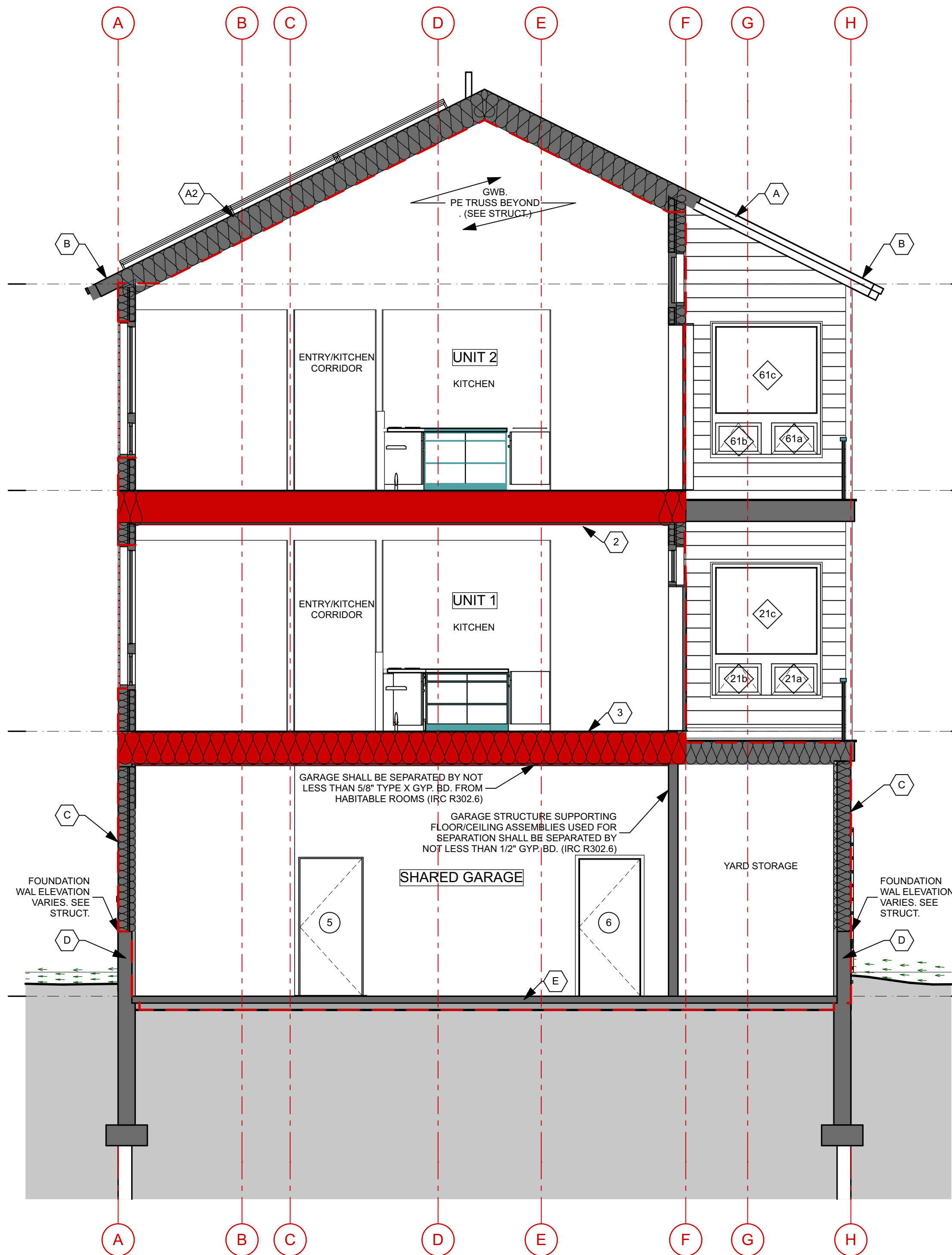


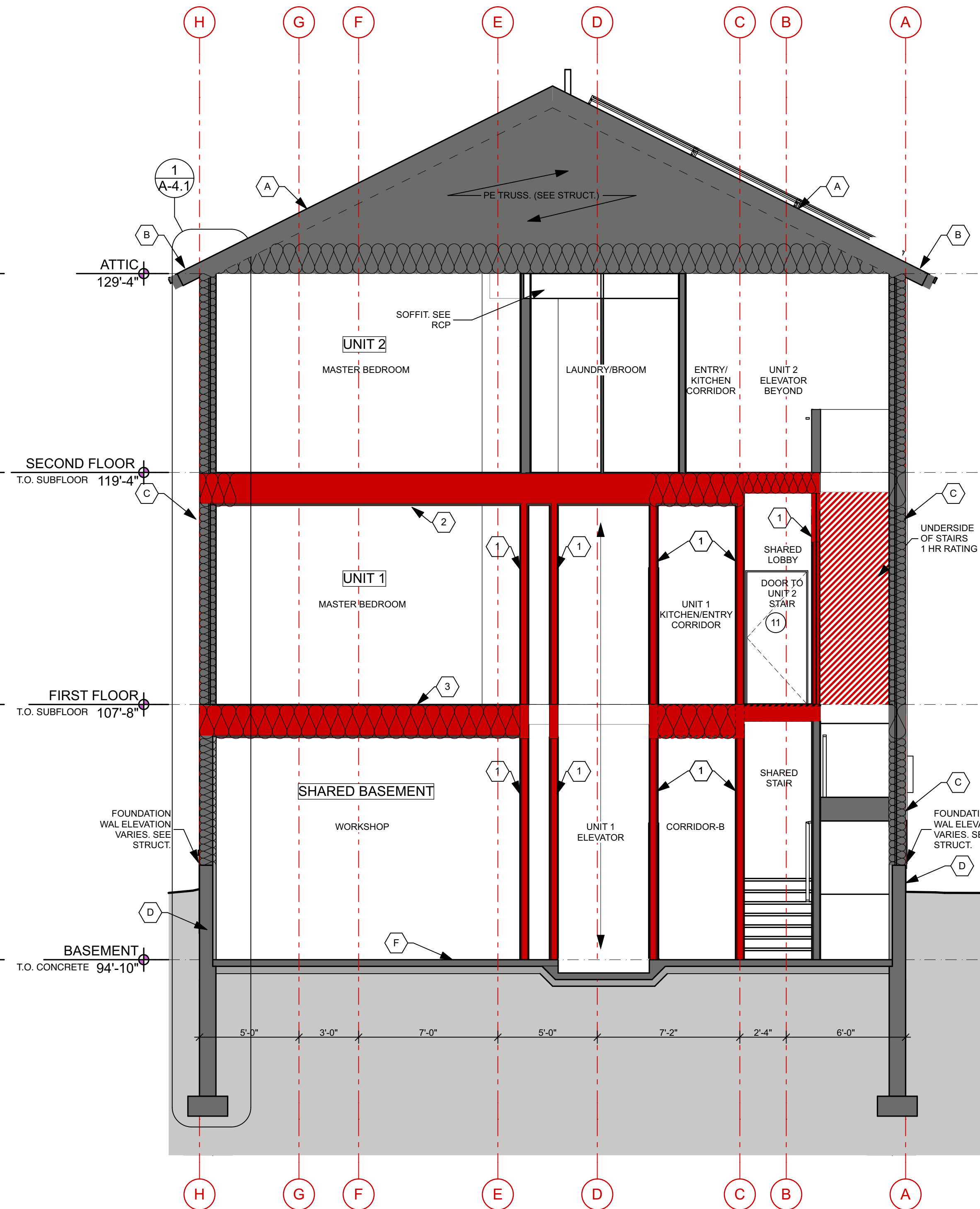
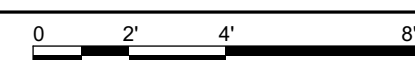
ASSEMBLY NOTES

- (A) PITCHED ROOFS: ~ R-66.4**
Self-Sealing Asphalt Shingles,
On Roofing Underlayment,
On Roof Sheathing w/ Taped Seams (Air Barrier)(See Struct.),
On PE Truss (See Struct.) w/1'-6" Loose Fill Cellulose Insulation,
On 1x Strapping
On Vapor Retarder Membrane: Intello, ProClima or Certainteed,
On GWB Ceiling,
Dropped Ceilings where applicable - See RCP
- (A2) PITCHED ROOFS (@ CATHEDRAL CEILING):**
Self-Sealing Asphalt Shingles,
On Roofing Underlayment,
On Roof Sheathing w/ Taped Seams (Air Barrier)(See Struct.),
On PE Truss (See Struct.), w/ Loose Fill Cellulose Insulation full cavity
On 1x Strapping
On Vapor Retarder Membrane: Intello, ProClima or Certainteed,
On GWB Ceiling
- (B) PITCHED ROOF (@ EAVES):**
Self-Sealing Asphalt Shingles,
On Roofing Underlayment,
On Roof Sheathing w/ Taped Seams (Air Barrier)(See Struct.),
On PE Truss (See Struct.)
On Painted MDO Soffit.
See Details for Fascia and Drip Edge information,
Overhangs Vary. See Roof Plan.
- (C) EXTERIOR WALL: ~ R-33.7**
Exterior Fibercement Siding (See Elevations for Extents),
On (1x K.D. strapping w/ black vinyl bug screen),
On Henry VP100,
On 1/2" CDX Plywood (See Struct.),
On 10" Double Stud Framing w/Full-Depth Dense Packed Cellulose
On MemBrain Vapor Retarder Membrane,
On GWB,
- (D) CONC. FOUND. WALL: R-14.3 @ CONC. FOUND. STEPPED WALL**
Free Draining Backfill,
On Sheet Waterproofing w/ Dimple Mat, Fluid-Applied Damproofing,
On Reinforced Concrete Wall (See Struct.),
On 2" Rigid EPS Insul. (R-8.5) Taped & Sealed,
On 5/8" GWB
- (E) CONC. FOUND. WALL (AT CRAWLSPACE EXTERIOR):**
Reinforced Concrete Wall (See Struct.),
- (F) INTERIOR SLAB ON GRADE: ~ R-13.6**
Sealed Reinforced 4" Concrete slab (See Struct.),
On 15 Mil. min. Poly Vapor Barrier Taped and Sealed,
On 3" Rigid EPS Insulation,
On 6" Crushed Gravel Fill (No Fines)
- (G) EXPOSED FRAMED FLOORS:**
Finish Floor Material (See Interior Finish Schedule),
On T+G Sheathing (See Struct.),
On Floor Joists (See Struct.) w/Full-Depth Dense Packed Cellulose
On 15/16" Pliteq Genie Clips (or equal)
On 7/8" Hat Channels
On 1/2" CDX Plywood,
On Henry VP100,
On 1x Furring,
On Painted MDO Soffit

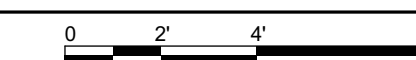
SEE A-4.1 FOR INTERIOR FRAMED FLOOR DETAILS
SEE A-4.1 FOR INTERIOR FIRE RATED WALL DETAIL



2 SECTION: E-W LOOKING NORTH
SCALE: 1/4" = 1'-0"



1 SECTION: E-W LOOKING SOUTH
SCALE: 1/4" = 1'-0"



PROJECT:

NEW TWO-FAMILY DWELLING

380 DANFORTH
PORTLAND ME 04101

NOT FOR CONSTRUCTION
PROJECT NO: BMF2
DATE: 10/11/16
DRAWN BY: JT/CA
PHASE: SCHEMATIC DESIGN

BUILDING SECTIONS

A-3.2