

NOTES:

1. CONCRETE TO BE 3000 PSI AT 28 DAYS FOR WALLS / FTGS
BASEMENT SLAB TO BE 3500 PSI, GARAGE SLAB 4000 PSI W/ FIBER MESH
2. REINFORCING TO BE GRADE 60, TIED IN PLACE
3. REINFORCING MIN CLEARANCE TO FORMS 1 1/2", 3" TO GRADE, UNLESS NOTED
4. PLACE CONCRETE WITH MAX SLUMP 5", USE MECHANICAL VIBRATION
5. REMOVE FORMS WHEN CONCRETE HAS REACHED ADEQUATE STRENGTH, ADJUST TIME FOR COLDER WEATHER, MIN 48 HOURS.
6. PROVIDE SMOOTH FINISH TO TOPS OF WALLS AND PIERS EQUAL TO FLOOR FINISH, STEEL TROWEL FINISH.
7. ALL REBAR LAPS TO BE AS SHOWN OR 24" FOR #4, 30" FOR #5 BARS
8. MAINTAIN 50 DEGREE (F) CONC TEMP FOR 7 DAYS MINIMUM.
FOLLOW PROPER COLD & HOT WEATHER PRACTICES.
PROTECT CONC FROM SUN, HEAT & WIND FOR MIN 7 DAYS FOR CURING.
9. WET CURE SLABS FOR MIN 5 DAYS W/ WATER SPRAY, WETTED BURLAP COVER, CURING PAPER OR OTHER APPROVED MEANS.

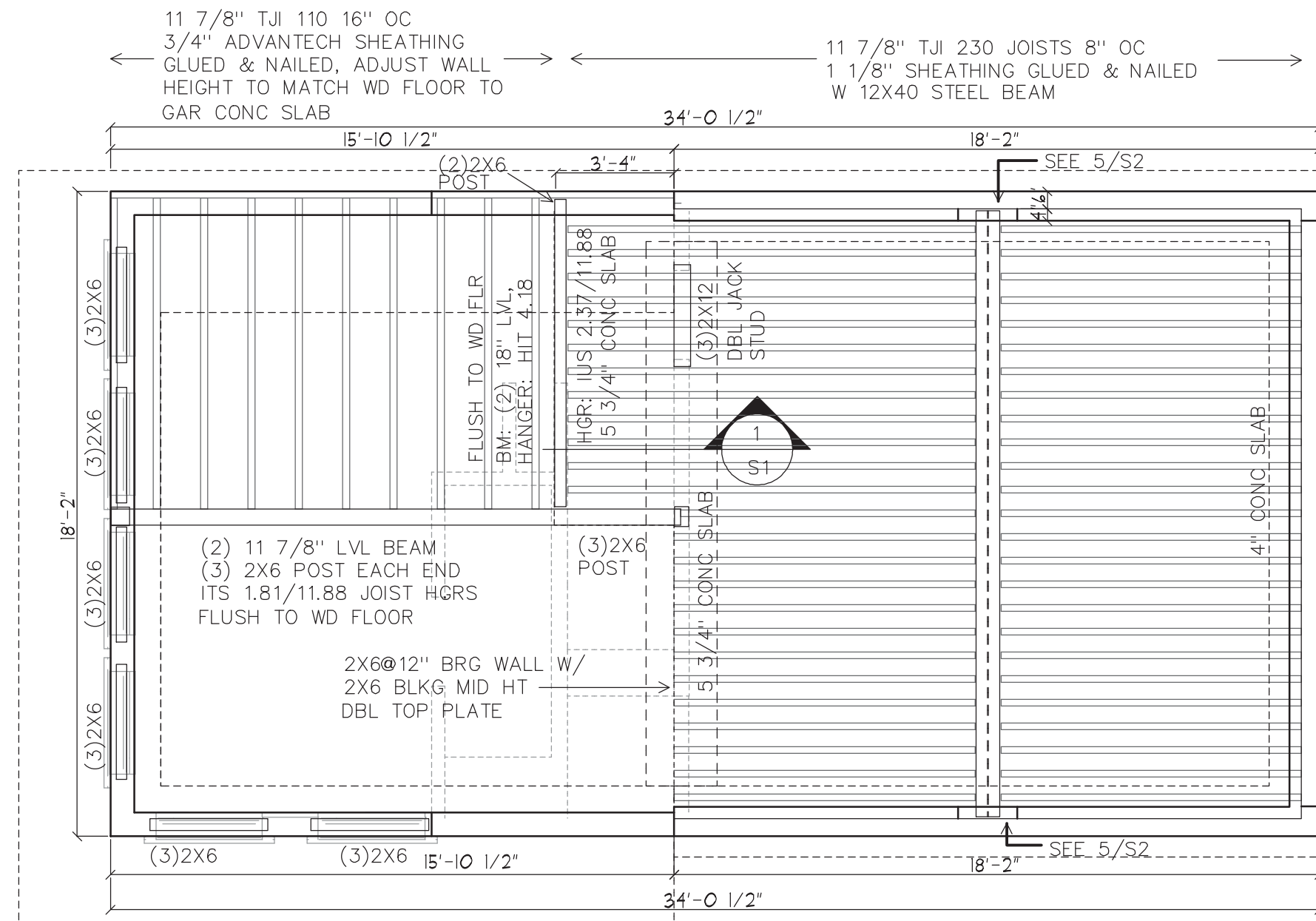
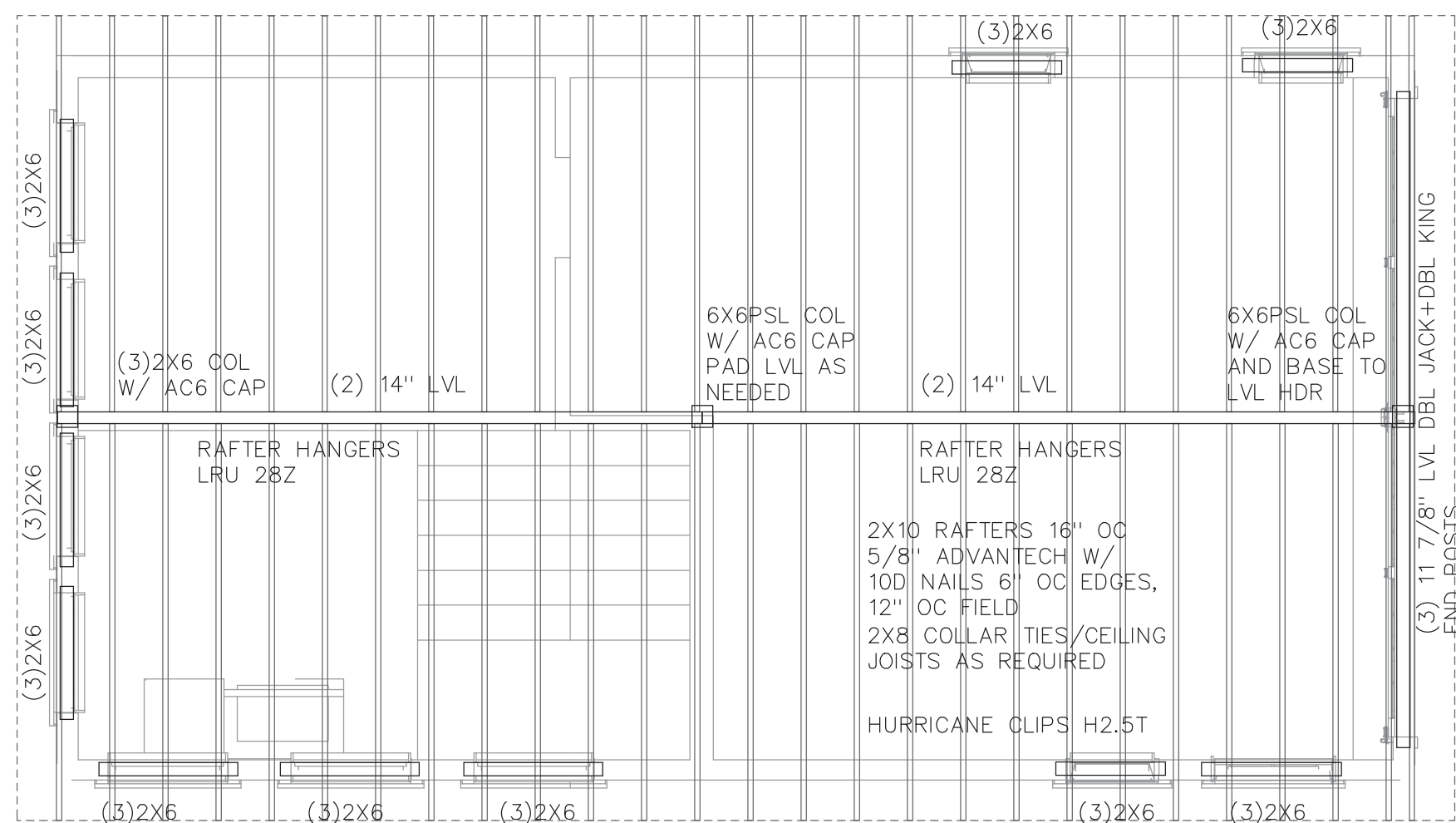
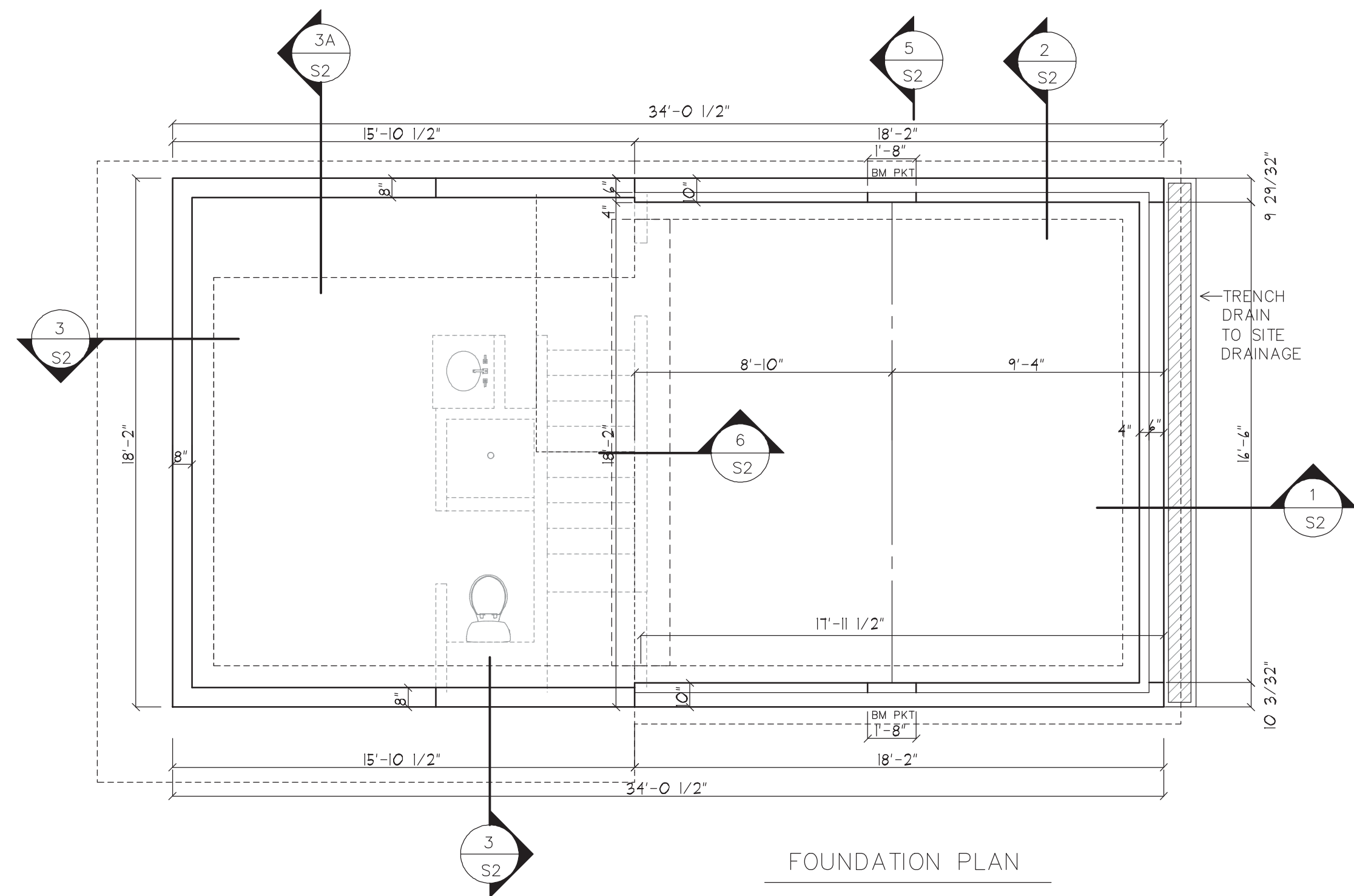
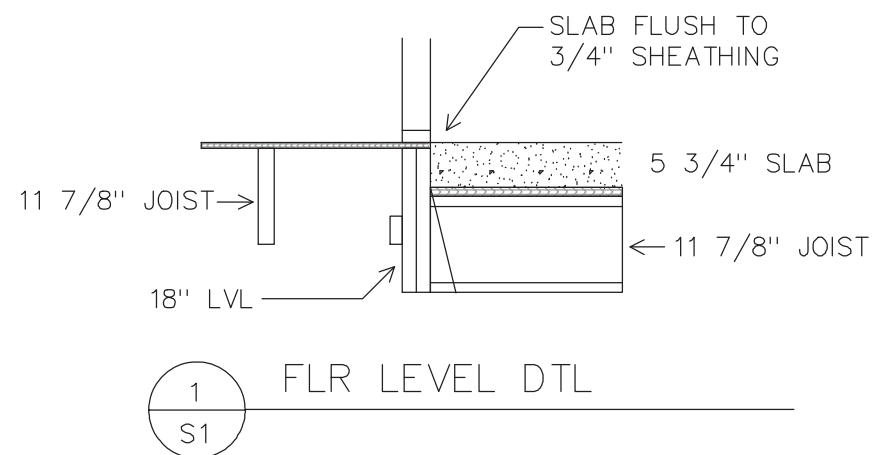
GARAGE FLOOR CONSTRUCTION:

4"-7" CONC ON 1 1/8" PLYWOOD ON
11 7/8" TJI 230 JOISTS 8" OC
LBV 2.37/11.88 HANGERS W/ 10D GALV NAILS
2X BRG STIFFENERS AT JOIST ENDS:
2X4 BRG STIFFENERS EACH SIDE W/ 1/8" GAP
AT TOP, (4) 16D NAIL, HOLD TIGHT W/ CLAMPS
WHILE NAILING

LIGHT/MODERATE CAR USE
6000 LB CARS GVW, 4000 LB MAX AXLE LOAD, 2000 LB TIRE LOAD
4000 PSI CONC, FIBERMESH REINF.
CURE MIN 7 DAYS W/ CURING PAPER

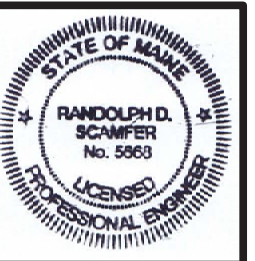
RESIDENTIAL FLOOR LOADS: 40 PSF LIVE, 10 PSF DEAD

ROOF LOADS: 50 PSF GROUND SNOW, 38.5 PSF ROOF SNOW, 10 PSF DEAD



REVISIONS	
11/6/17	3A/S2 UPDATE

Civil & Structural Design
Randy D. Scamfer, P.E.
621 Western Road
Warren, ME 04864
207-273-3021
FAX 273-3021
© COPYRIGHT 2017



Randy D. Scamfer

MURPHY GARAGE

DRAWN :	CHECKED :
RDS	RDS
DATE :	10/12/17
SCALE :	1/4" = 1'-0"
JOB NO. :	2017089
SHEET	