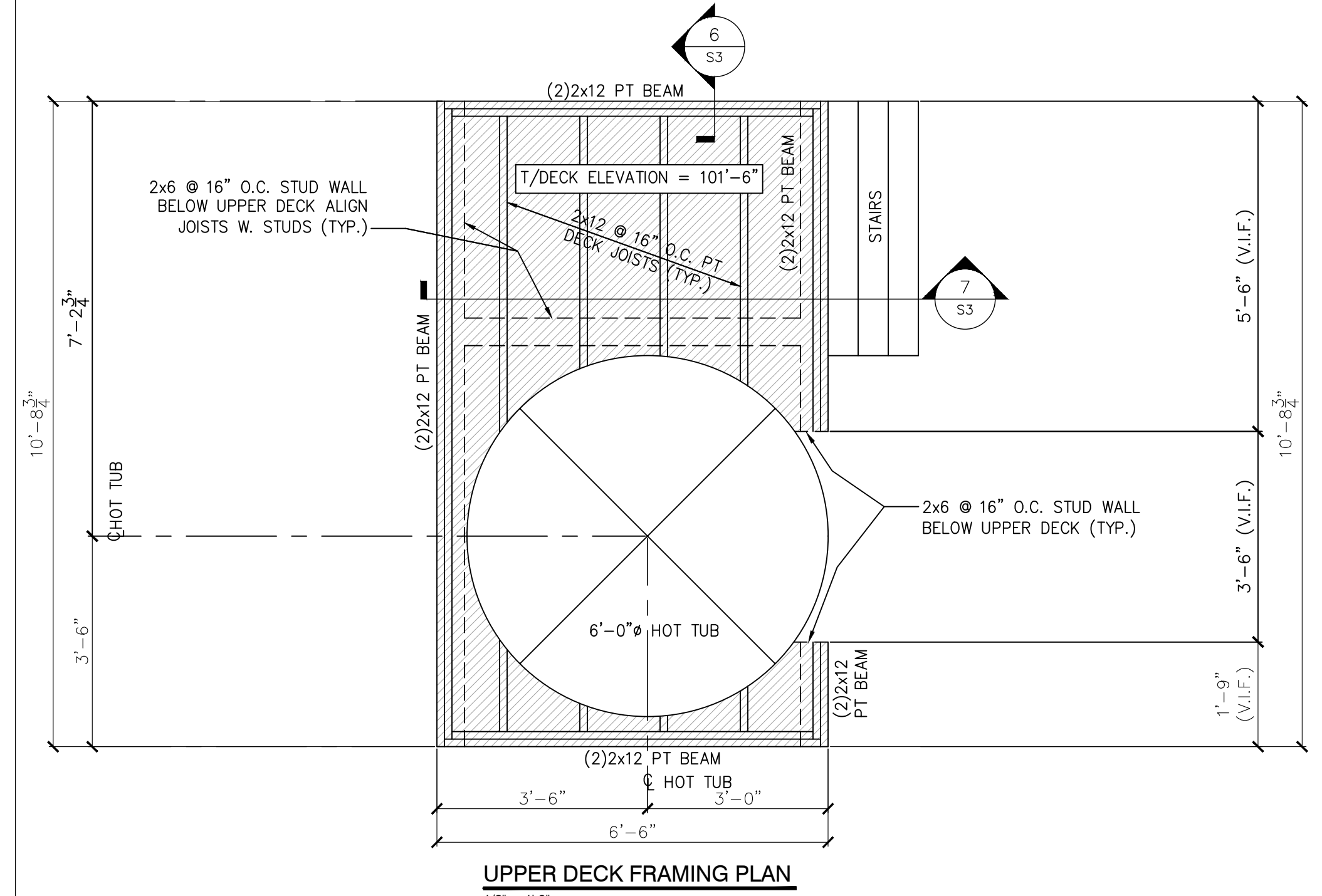


EXTERIOR DECK FRAMING PLAN
1/2" = 1'-0"

- NOTES:
1. SEE GENERAL NOTES ON DWG S0.1.
 2. "E" INDICATES: EXISTING CONDITIONS, OR MEMBERS.
 3. "TYP." INDICATES: TYPICAL (ALSO SEE GENERAL NOTE #5).
 4. "V.I.F." INDICATES: O.C. SHALL "VERIFY IN FIELD" EXISTING DIMENSIONS, ELEVATIONS, OR CONDITIONS INDICATED AND REPORT ANY DISCREPANCIES TO THE ENGINEER.
 5. "U.O.N." INDICATES: UNLESS OTHERWISE NOTED.
 6. "S.S." INDICATES: STAINLESS STEEL.
 7. "R.O." INDICATES: ROUGH OPENING.
 8. "M.O." INDICATES: MASONRY OPENING.



UPPER DECK FRAMING PLAN
1/2" = 1'-0"

SIMPSON DTT2Z HDG HOLDOWN (HORIZONTALLY) TIE FASTENED TO DOUBLE 2x12 DECK BEAM OR 2x12 JOIST (SEE PLAN) ON EXTERIOR AND FASTENED TO EXISTING 2x10 JOISTS IN INTERIOR OF BUILDING W/S.S. SDS SCREWS PER MANUFACTURER. PROVIDE 1/2" HDG A36 THREADED ROD TO FASTEN TWO HOLDOWNS TOGETHER (TYP. 3 PLACES)

SIMPSON LUS210 HANGERS (LUS210 AT DOUBLE 2x12'S) (TYP. UON)

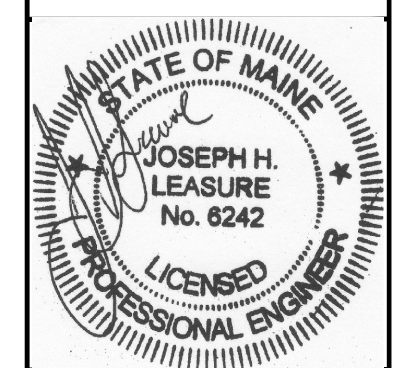
EXISTING 2x6 TO BE REMOVED AND REPLACED BY 2x12 P.T. LEDGER. FASTEN TO EXISTING 8x10 SILL (V.I.F.) W/1/2" THRU BOLTS @ 8" O.C. (TYP.)

4x6 AND 2x4 DIAGONAL BRACES ON BOTH (OR THREE) SIDES OF EACH POSTS AS SHOWN (---). SEE SECTION 7/4 FOR ADDITIONAL INFORMATION (TYP.)

(2)4x6 P.T. POSTS, SHIP LAP 2x12 BEAM MEMBERS OVER POST AND FASTEN W/SIMPSON HDG ACE4 (LEFT AND RIGHT) POST CAP AT EXTERIOR FACE OF BM/POST AND SIMPSON (2)ABU46 HDG POST BASE W/3/8" x 12" LONG HOOKED HDG ANCHOR BOLT INTO 12" CONCRETE PIER (TYP. AT (2)4x6 P.T. POSTS)

6x6 P.T. POST, SHIP LAP 2x12 BEAM MEMBERS OVER POST AND FASTEN W/SIMPSON HDG ACE6 (LEFT AND RIGHT) POST CAP AT EXTERIOR FACE OF BM/POST AND SIMPSON ABU66 HDG POST BASE W/3/8" x 12" LONG HOOKED HDG ANCHOR BOLT INTO 12" CONCRETE PIER (TYP. 6 PLACES)

L & L STRUCTURAL ENGINEERING SERVICES, INC.
SIX Q STREET
SOUTH PORTLAND, MAINE 04106
PHONE: (207) 767-4830
FAX: (207) 799-5432
EMAIL: LLEASURE@LL-ENG.COM



rev.	date	description	designed by	checked by	scale	date	plot date	project #
A	08/25/17	PERMIT & PRICING ONLY	JHL	RAW	AS NOTED	07/19/2017	08/25/2017	2017-125

BUILDING LOCATED AT
394 DANFORTH STREET
PORTLAND, MAINE
EXTERIOR DECK REPLACEMENT
MAIN AND UPPER DECK FRAMING PLANS

S2

THESE DRAWINGS HAVE BEEN DEVELOPED BY L&L STRUCTURAL ENGINEERING SERVICES, INC. FOR THE TITLED SET ONLY. THE DRAWINGS ARE THE SOLE PROPERTY OF L&L ENGINEERING SERVICES, INC. AND THEY SHALL NOT BE USED, LENT, COPIED OR ALTERED WITHOUT THE WRITTEN CONSENT OF L&L STRUCTURAL ENGINEERING SERVICES, INC.